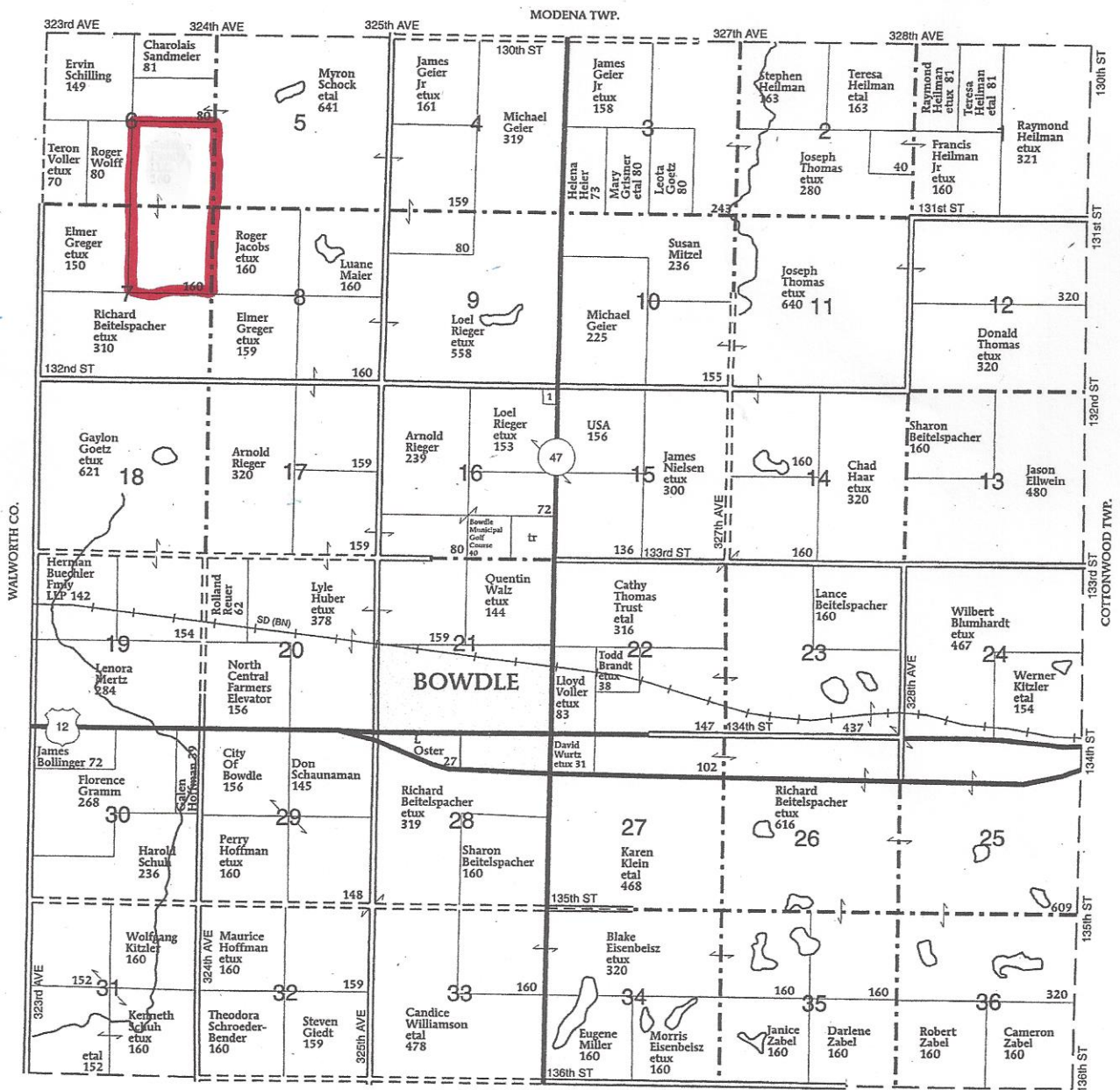


in the Next Plat and Directory Publication.
Contact Farm & Home Publishers 1-800-685-7432 • Fax 641-444-5150
 E-Mail info@farmandhomepublishers.com
 to get your business added to the next year's publication

T-123-N

BOWDLE PLAT
 (Landowners)

R-73-W

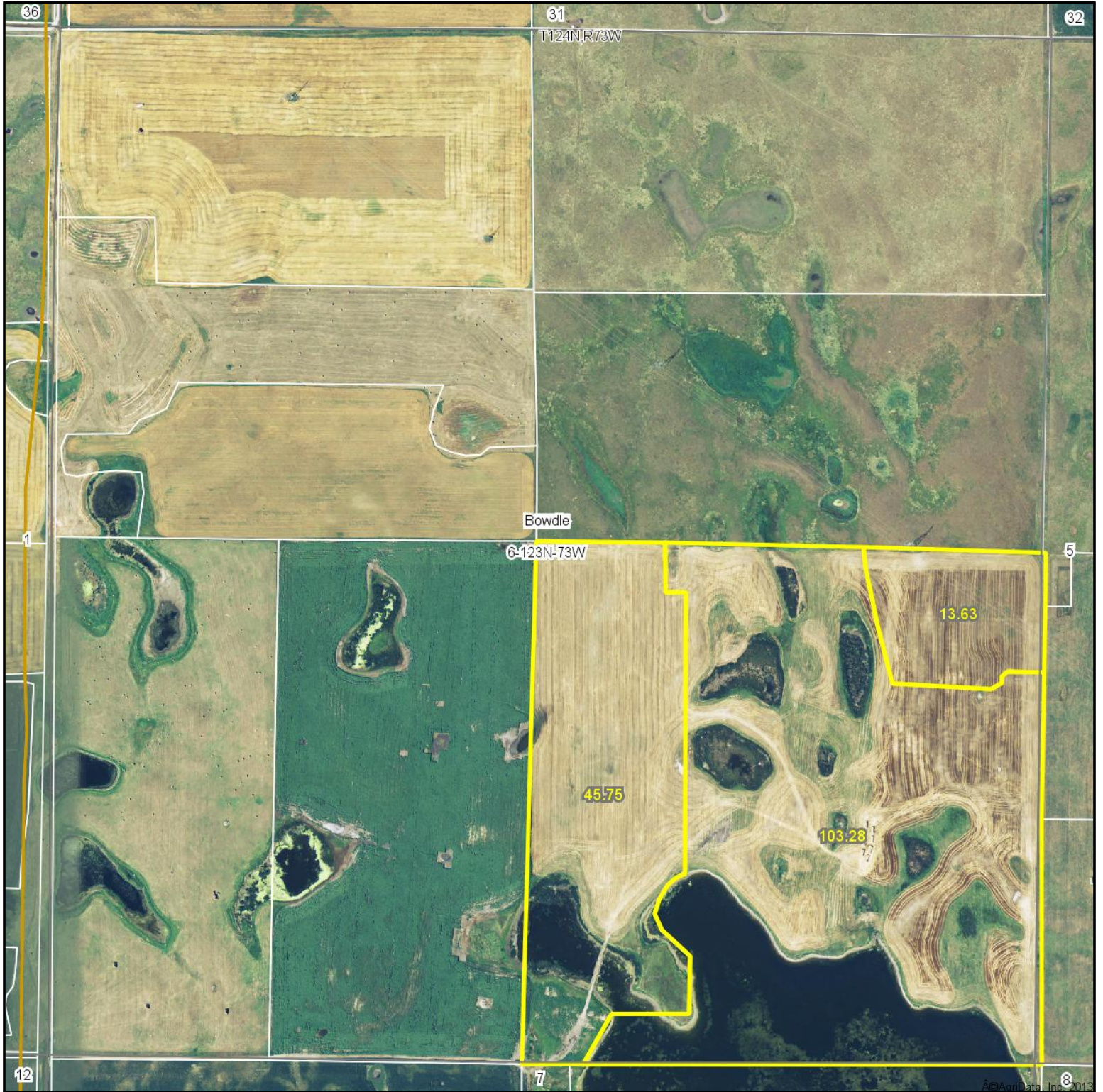


BOWDLE TOWNSHIP
 SECTION 16

1. Northwestern Bell
 Telephone Co

ODESSA TWP.

Aerial Map



INVESTMENT REALTORS

Maps provided by:



©AgriData, Inc. 2012

www.AgriDataInc.com

6-123N-73W
Edmunds County
South Dakota

map center: 45° 29' 57.24, 99° 41' 52.69

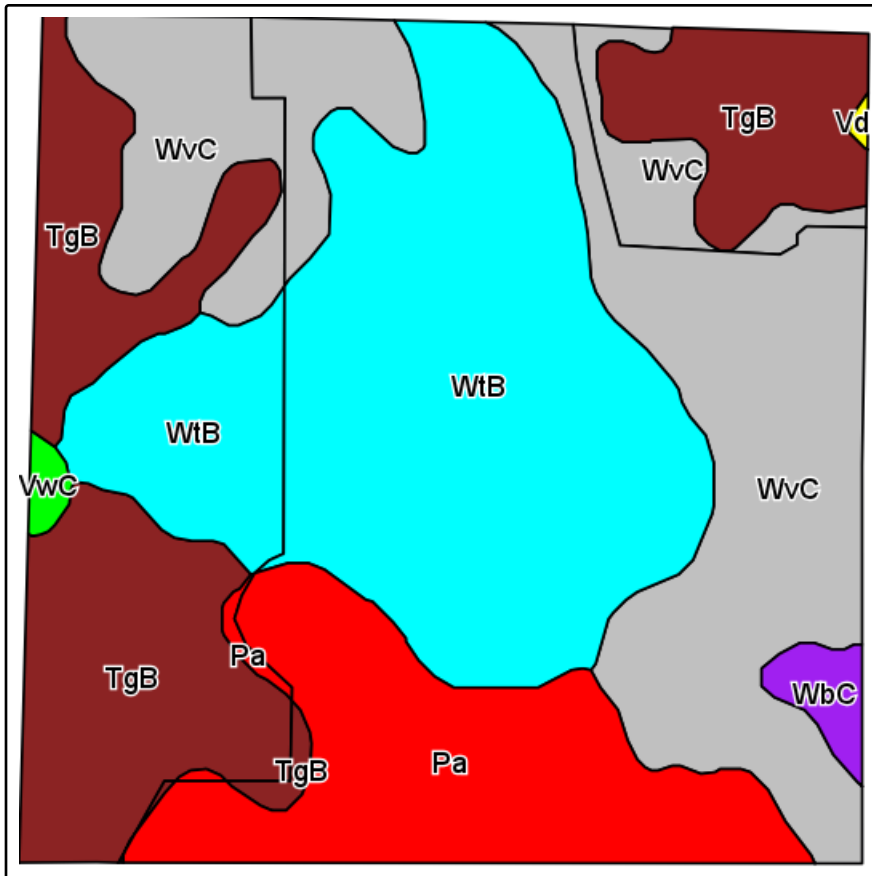
scale: 8502



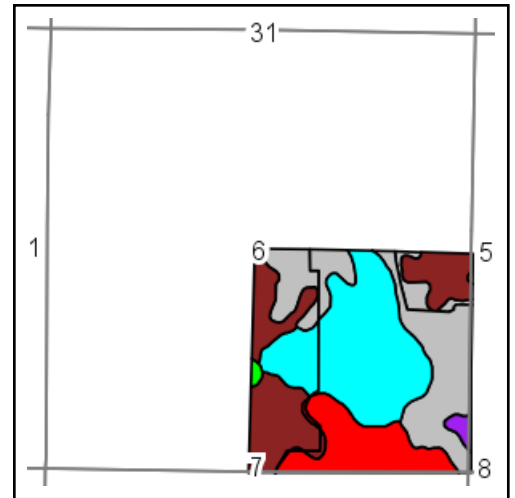
10/1/2013

Field borders provided by Farm Service Agency as of 5/21/2008. Aerial photography provided by Aerial Photography Field Office.

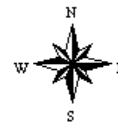
Soils Map



Field borders provided by Farm Service Agency as of 5/21/2008.
Soils data provided by USDA and NRCS.



State: **South Dakota**
County: **Edmunds**
Location: **6-123N-73W**
Township: **Bowdle**
Acres: **162.66**
Date: **10/1/2013**

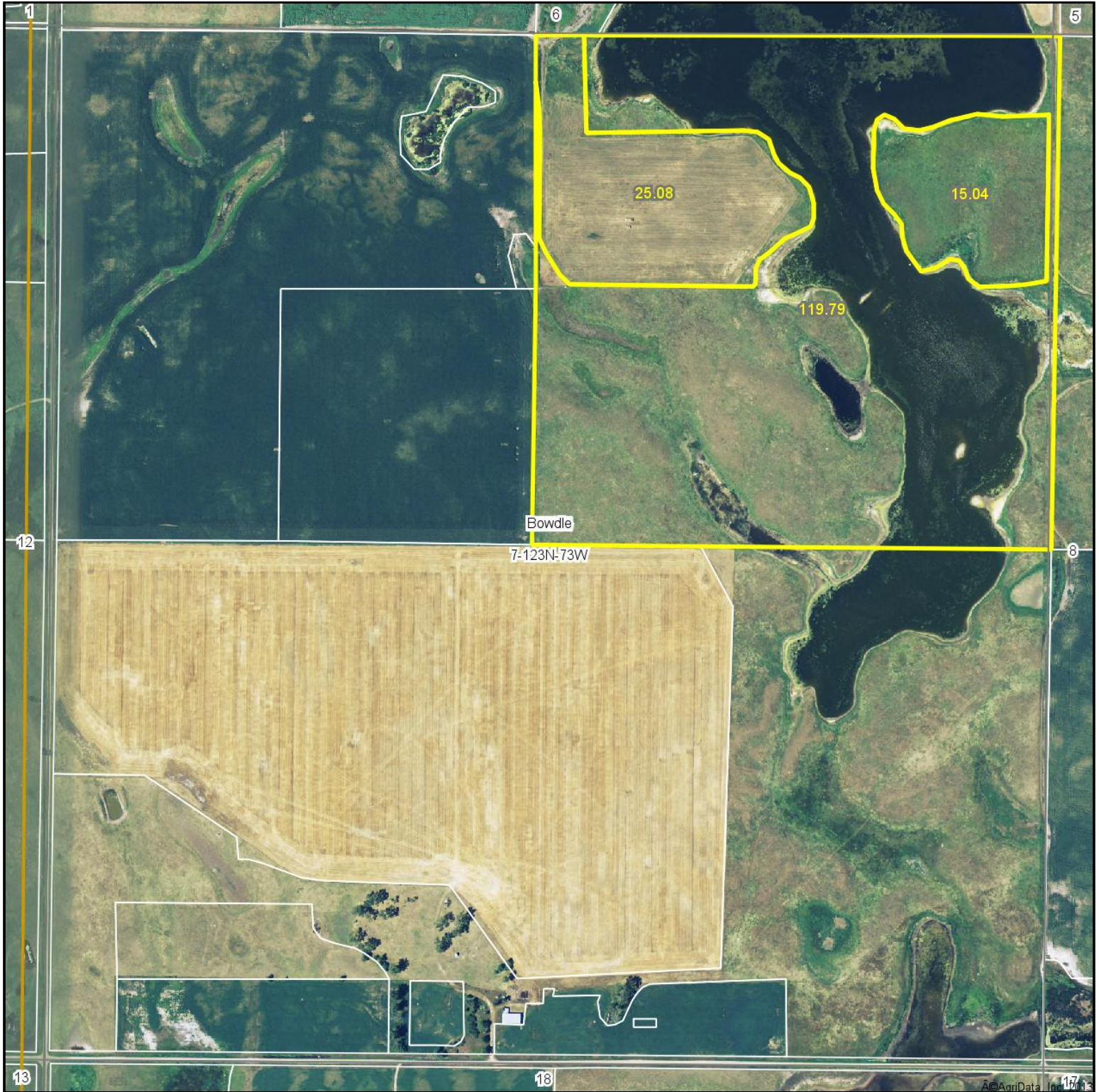


Maps provided by:



Code	Soil Description	Acres	Percent of field	PI Legend	Non-Irr Class	Productivity Index
WtB	Williams-Bowbells-Nishon complex, 2 to 6 percent slopes	54.02	33.2%		IIw	76
WvC	Williams-Bowbells-Parnell complex, 6 to 9 percent slope s	46.49	28.6%		IIIw	63
TgB	Temvik-Grassna loams, 3 to 6 percent slopes	35.70	21.9%		Ile	88
Pa	Parnell silty clay loam	23.69	14.6%		Vw	30
WbC	Wabek-Bowdle loams, 6 to 15 percent slopes	1.86	1.1%		Vs	36
VwC	Vida-Williams loams, 6 to 15 percent slopes	0.75	0.5%		IVe	52
VdC	Vida extremely stony loam, 3 to 15 percent slopes	0.15	0.1%		VIs	3
Weighted Average						67.6

Aerial Map



INVESTMENT REALTORS

Maps provided by:



©AgriData, Inc. 2012

www.AgriDataInc.com

7-123N-73W
Edmunds County
South Dakota

map center: 45° 29' 5.07, 99° 41' 53.08

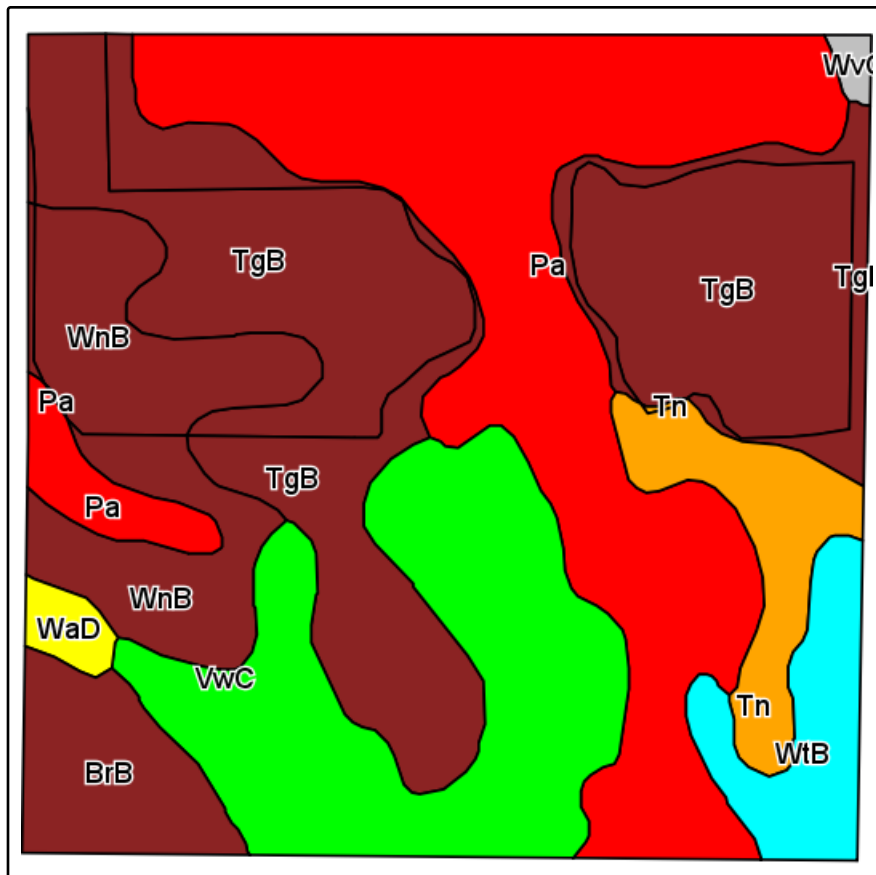
scale: 8428



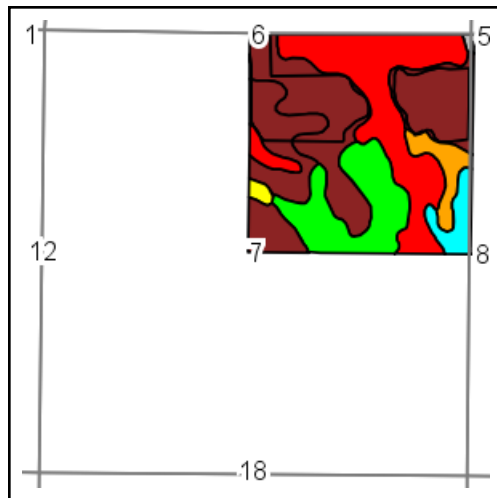
10/1/2013

Field borders provided by Farm Service Agency as of 5/21/2008. Aerial photography provided by Aerial Photography Field Office.

Soils Map



Field borders provided by Farm Service Agency as of 5/21/2008.
Soils data provided by USDA and NRCS.

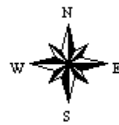


State: **South Dakota**
County: **Edmunds**
Location: **7-123N-73W**
Township: **Bowdle**
Acres: **159.91**
Date: **10/1/2013**



INVESTMENT REALTORS

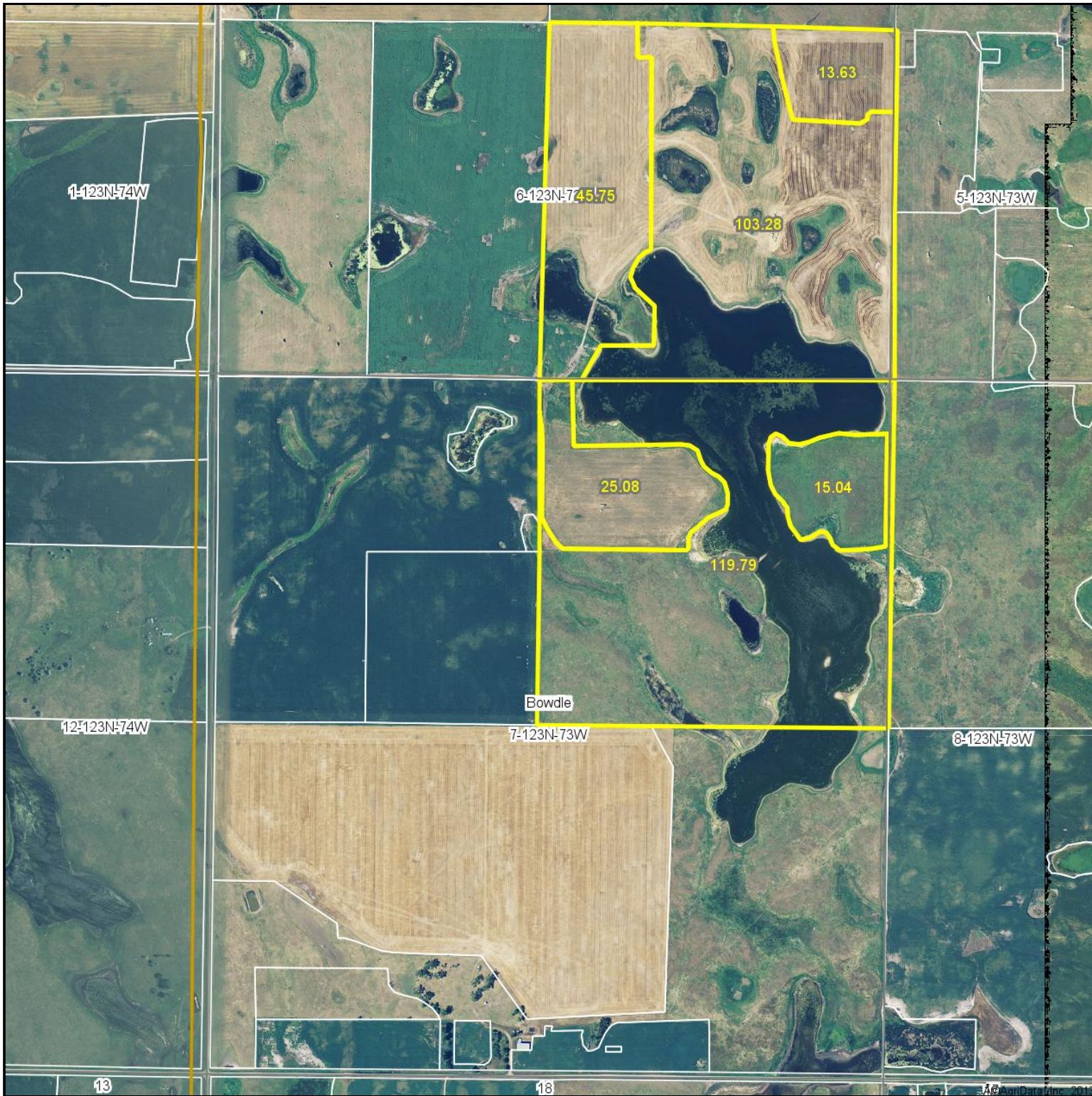
Maps provided by:



©AgriData, Inc 2013
www.AgriDataInc.com

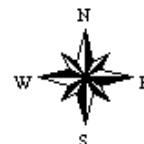
Code	Soil Description	Acres	Percent of field	PI Legend	Non-Irr Class	Productivity Index
TgB	Temvik-Grassna loams, 3 to 6 percent slopes	49.36	30.9%		Ile	88
Pa	Parnell silty clay loam	44.89	28.1%		Vw	30
VwC	Vida-Williams loams, 6 to 15 percent slopes	26.17	16.4%		IVe	52
WnB	Williams-Bowbells loams, 3 to 6 percent slopes	16.35	10.2%		Ile	81
Tn	Tonka-Nishon silt loams	7.37	4.6%		IVw	50
BrB	Bryant loam, 2 to 6 percent slopes	7.19	4.5%		Ile	84
WtB	Williams-Bowbells-Nishon complex, 2 to 6 percent slopes	6.62	4.1%		IIw	76
WaD	Wabek loam, 6 to 20 percent slopes	1.41	0.9%		VIIs	9
WvC	Williams-Bowbells-Parnell complex, 6 to 9 percent slope s	0.55	0.3%		IIIw	63
Weighted Average						61.9

Aerial Map



map center: 45° 29' 18.24, 99° 41' 53.08

scale: 12467



10/1/2013



Maps provided by:



©AgriData, Inc. 2012

www.AgriDataInc.com

7-123N-73W
Edmunds County
South Dakota

Field borders provided by Farm Service Agency as of 5/21/2008. Aerial photography provided by Aerial Photography Field Office.