

# Hi View

## REAL ESTATE

Farm & Ranch, Commercial, Investment Properties,  
Recreation Land & Homes

**Brett Hess**

Cell: 214-207-5431  
brett@hiviewrealestate.com

**David Teeter**

Cell: 214-649-3633  
david@hiviewrealestate.com

Rock Bottom  
Creek

**Batchler Rd.  
Ferris, TX. 75125  
11.772 ACRES**

Water Meter



### **Home Site \* Corporate Retreat \* Commercial**

Creating endless possibilities!! This spectacular beautiful parcel is nestled along Brush Creek and front along Batchler Rd. Hugh native pecan trees line the rock-bottom creek and are scattered about the property creating many building sites. A large water line is on the property for easy development and all utilities available. This is the prettiest tract available in Ellis County and a **MUST SEE!!**

1007 Ferris Ave | Waxahachie, TX 75165 | Ofc. 469-517-0012 | Fax 469-517-0015  
[www.hiviewrealestate.com](http://www.hiviewrealestate.com)

Information contained herein has been obtained from the owner of the property or obtained from other sources that we deem reliable. We have no reason to doubt its accuracy, but we do not guarantee it.



# Hi View

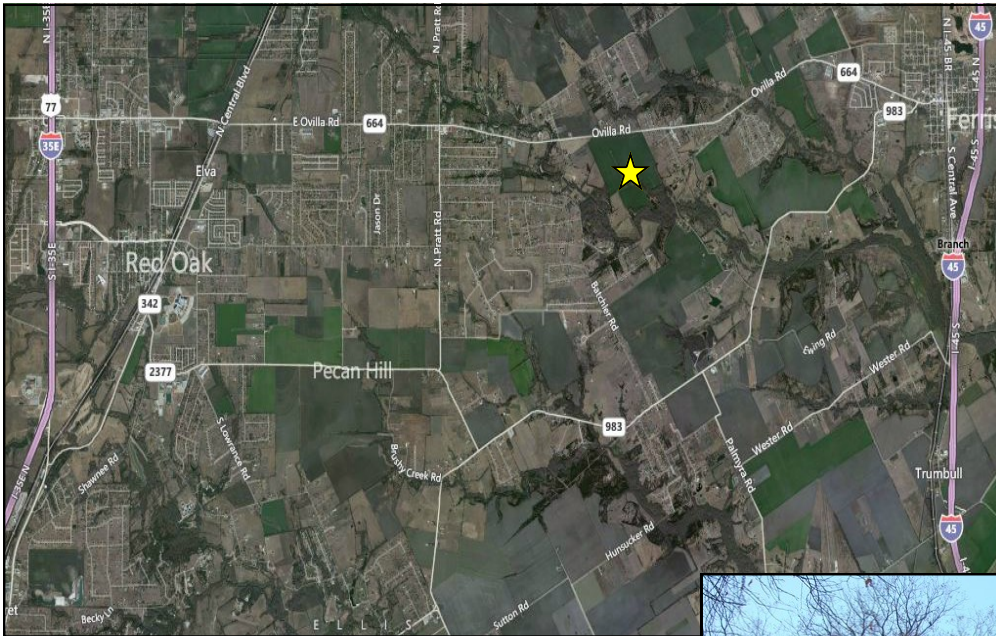
REAL ESTATE

Farm & Ranch, Commercial, Investment Properties,  
Recreation Land & Homes

**Brett Hess**

Cell: 214-207-5431

brett@hiviewrealestate.com



## Directions

Off I-45, go west on FM 664, left on Batchler Rd., property on right.

From I-35 go East on FM 664, South on Batchler Rd, property on right.

Look for the *Hi View* sign!!

1007 Ferris Ave | Waxahachie, TX 75165 | Ofc. 469-517-0012 | Fax 469-517-0015

[www.hiviewrealestate.com](http://www.hiviewrealestate.com)

Information contained herein has been obtained from the owner of the property or obtained from other sources that we deem reliable.  
We have no reason to doubt its accuracy, but we do not guarantee it.