

1210 Industrial Drive

Royse City, TX 75189

FOR SALE

~~\$450,000~~

JUST REDUCED
\$399,000

DIRECTIONS

From Dallas, 22.7 miles: I-30 past Royse City to Exit 79, cross under I-30 Service Rd (W) to Industrial DR. (R) to 1210 Industrial. Sign on Property

30,000 +/- SF WAREHOUSE W. 1600 SF OFFICE



RE/MAX Landmark
113 North Frances Street
Terrell, TX 75160

www.frankrobertslandteam.com



Brought to You Exclusively By
Frank J. Roberts, ALC

REALTOR, Owner

OFFICE: 972-524-0689

FAX: 972-551-2525

frank@rmlandmark.com



1210 Industrial Drive

Royse City, TX 75189

FOR SALE

~~\$450,000~~

JUST REDUCED
\$399,000

ROOF:
Metal

WALLS:
Metal

FOUNDATION
Slab

CEILINGS:
15-20 Ft.

FREIGHT
DOORS:
Grade level



1210 Industrial Drive

Royse City, TX 75189

Frank Roberts
LAND TEAM

~~\$450,000~~

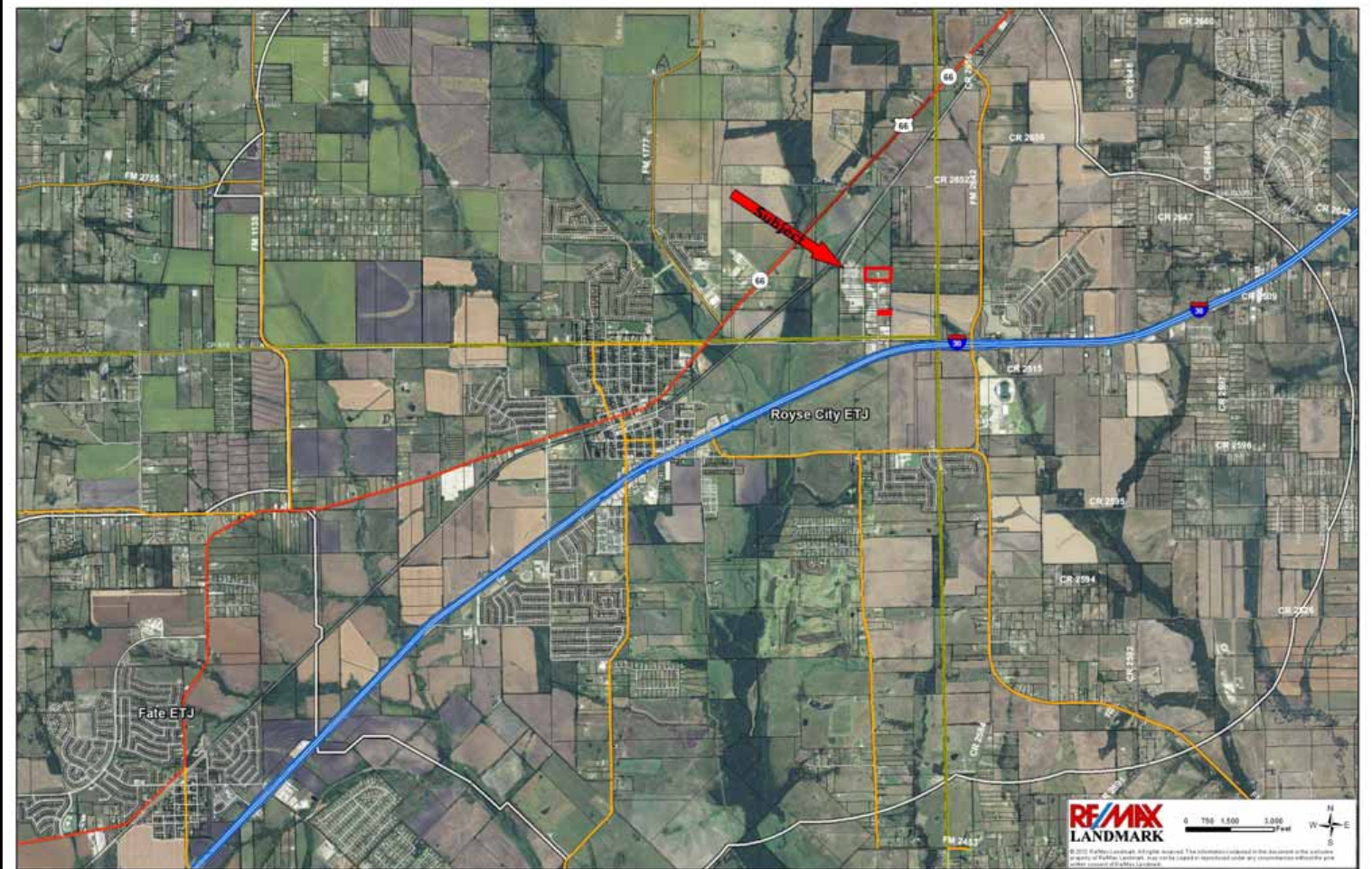
JUST REDUCED
\$399,000

ZONING:
Light
Industrial

UTILITIES:
City Sewer
City Water

FRONTAGE:
City/Asphalt

POSSESSION:
Negotiable



30000 +- SF Industrial Building located only 23 mi from Dallas. Great for MFG, assembly, warehouse. Currently on month to month lease, need 30 days to vacate. 1600 SF office. Priced to sell.