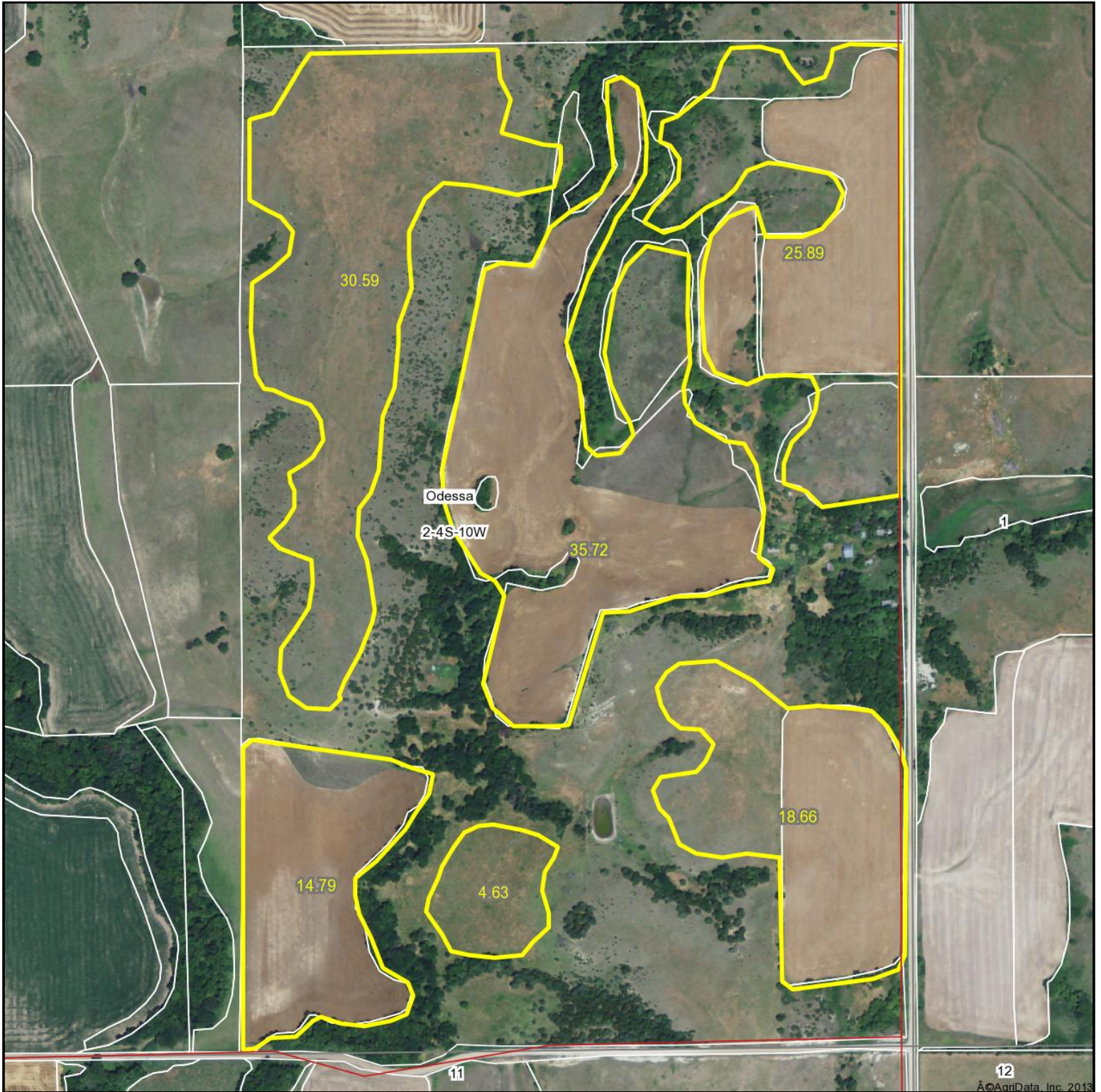


Aerial Map



map center: 39° 43' 56.21, 98° 24' 58.05

scale: 6495

NICK RHODES
WILDLIFE PROPERTIES

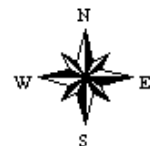
Maps provided by:



©AgriData, Inc. 2012

www.AgriDataInc.com

2-4S-10W
Jewell County
Kansas



9/5/2013

Field borders provided by Farm Service Agency as of 5/21/2008. Aerial photography provided by Aerial Photography Field Office.