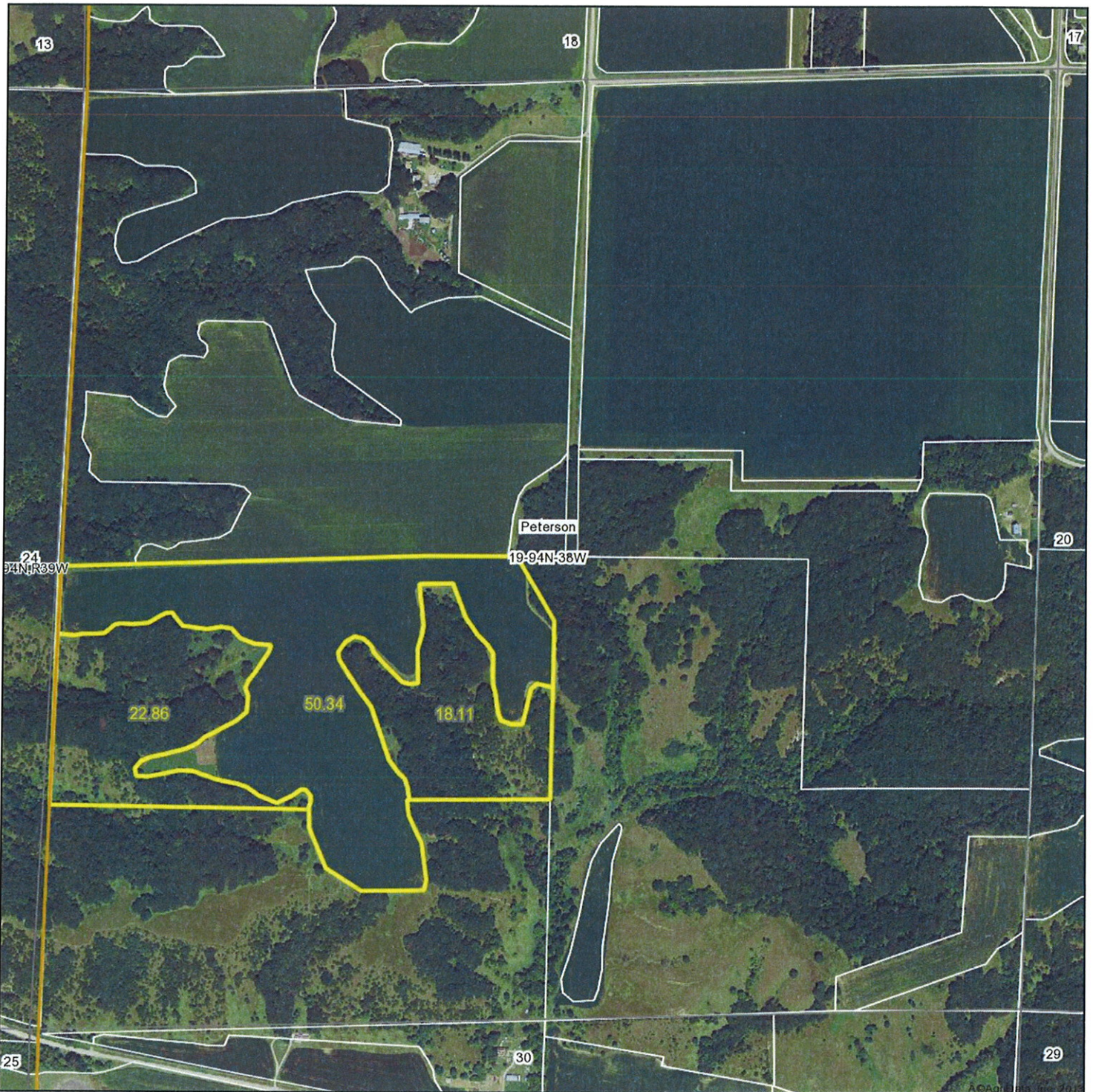


Aerial Map



Midwest Land
712-262-3110 MANAGEMENT

Maps provided by:



©AgriData, Inc. 2012
www.AgriDataInc.com

19-94N-38W
Clay County
Iowa

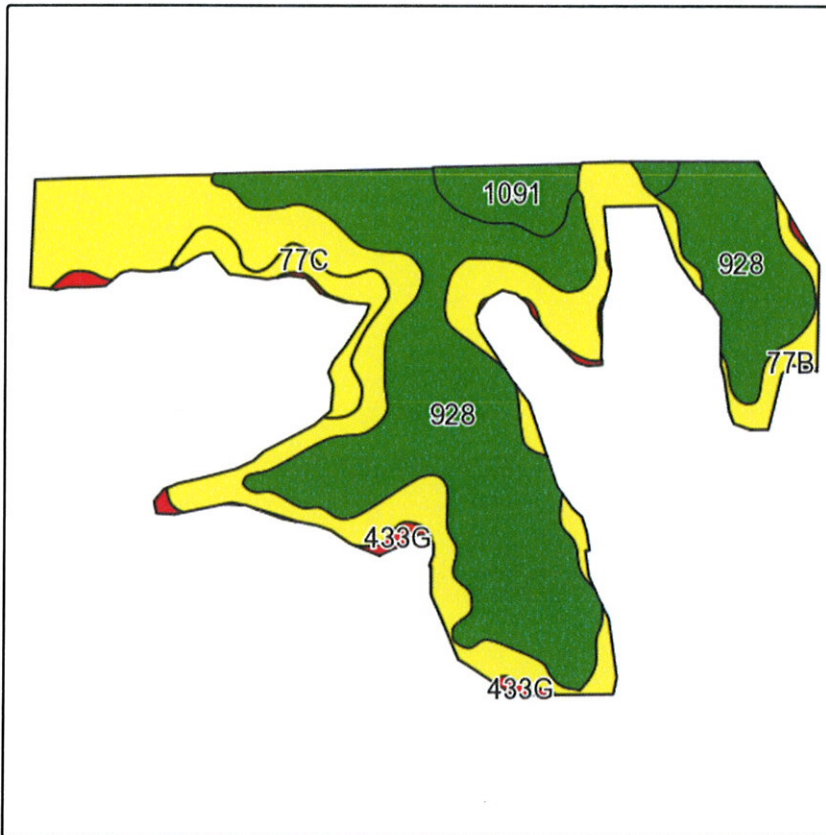
map center: 42° 56' 47.34, 95° 22' 41.22
scale: 9114



8/15/2013

Field borders provided by Farm Service Agency as of 5/21/2008. Aerial photography provided by Aerial Photography Field Office.

Soils Map-CSR(as of 1/21/12)



State: **Iowa**
 County: **Clay**
 Location: **19-94N-38W**
 Township: **Peterson**
 Acres: **50.3**
 Date: **8/15/2013**

MIDWEST LAND
 & REAL ESTATE, INC
 712-262-3110 MANAGEMENT

Field borders provided by Farm Service Agency as of 5/21/2008.
 Soils data provided by USDA and NRCS.



Maps provided by:



©AgriData, Inc 2013
 www.AgriDataInc.com

Code	Soil Description	Acres	Percent of field	CSR Legend	Non-Irr Class	CSR*	Corn	Soybeans
928	Annieville silty clay loam, 0 to 2 percent slopes	25.8	51.5%		I	78	190	51
77B	Sac silty clay loam, 2 to 5 percent slopes	19	37.7%		Ile	71	181	47
1091	McCreath silty clay loam, 0 to 2 percent slopes	2.5	4.9%		I	83	197	54
77C	Sac silty clay loam, 5 to 9 percent slopes	2	4.0%		IIle	55	159	44
433G	Moneta loam, 25 to 40 percent slopes	1	1.9%		Vlle	5		
Weighted Average						73.3	182.1	48.4

Note: ALL soils information on this page is dated 1/21/2012

*CSR ratings will be available for a limited time to aid in the transition to CSR2.