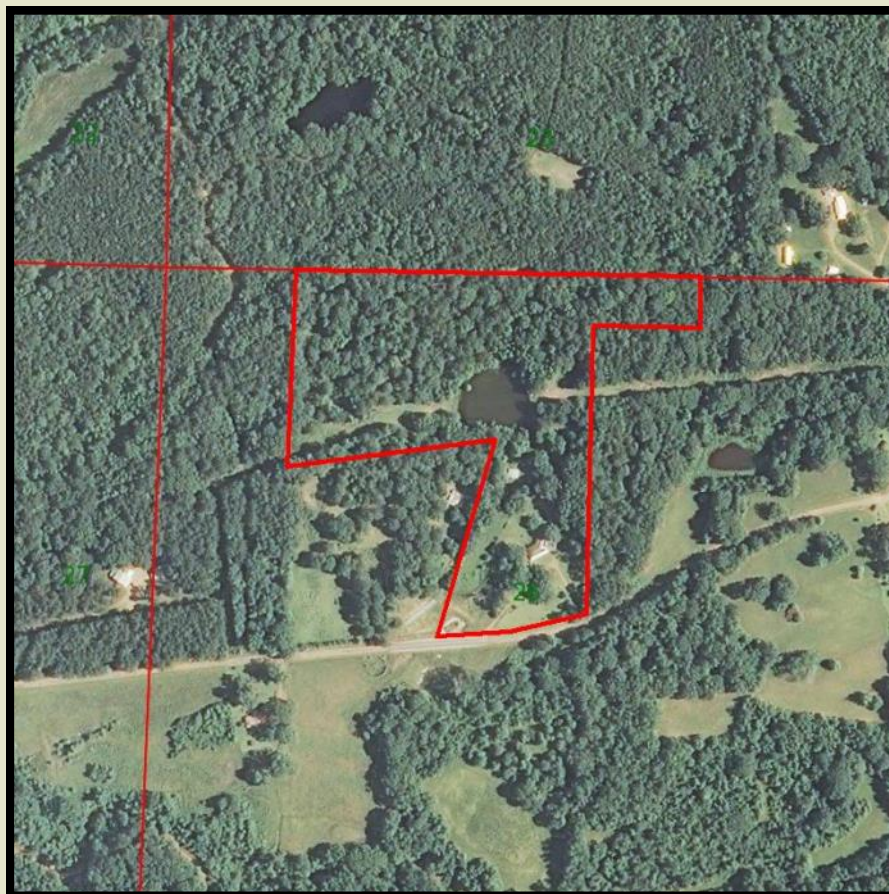




# Sand Hill Road

16 Acres +/-  
Holmes County, MS



## 3295 SAND HILL ROAD

16 +/- acres fronting Sand Hill Road conveniently located in Holmes County approximately 7 miles from I-55 Exit 156 and 6.5 miles from Lexington. The property includes a 1300 sq. ft. three bedroom and one bath home, a one acre stocked pond, well and community water service. The home interior is well appointed with hardwood and tile floors, granite kitchen counters, an Attala fireplace insert, new double pane windows and a one year old metal roof.

This property will make a nice small home, a weekend get-away or hunting cabin only 30 miles from Hillside National Wildlife Refuge.

**\$92,000.00**

**CONTACT:**  
**J. PARKER SARTAIN**  
601.506.2398  
psartain@sartainsheritage.com

**Sartain's Heritage Properties**  
106 First Choice Drive  
Madison, MS 39110  
Phone: 601-856-2720  
Fax: 601-853-6765  
www.SartainsHeritage.com



