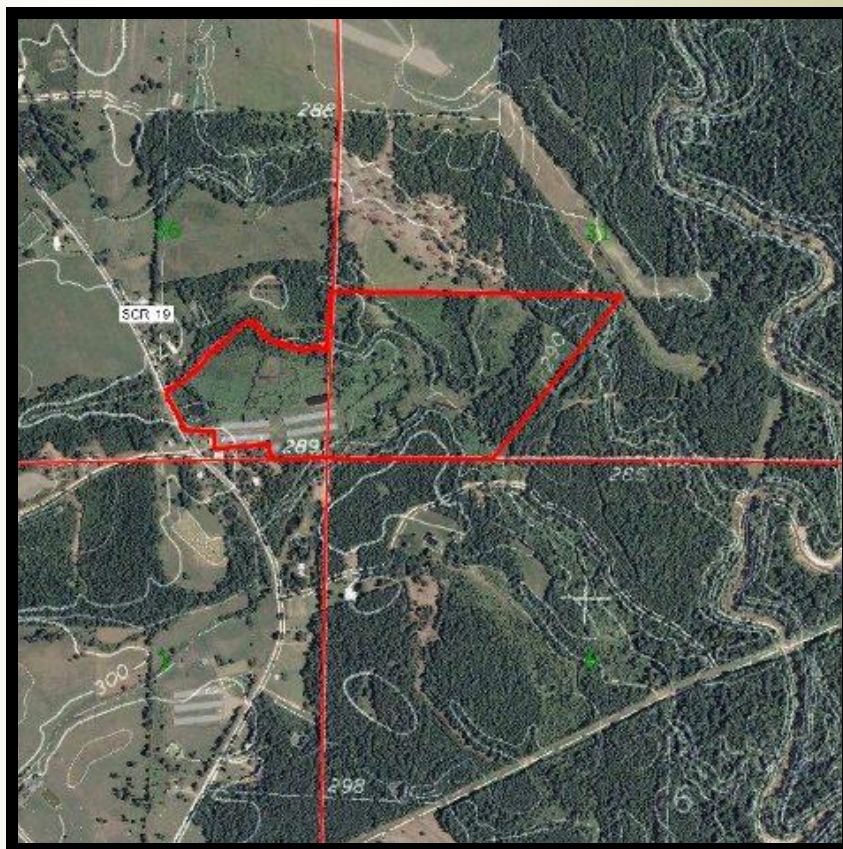




# Smith County 73

73.7 Acres +/-  
Smith County, MS



73.7 acres fronting SCR 19, 10 miles southeast of Raleigh and 11 miles north of Taylorsville. There are approximately 35 acres of open land suitable for pasture, with balance in scattered hardwoods. With 2 ponds and 4 dirt pads constructed where barns and sheds can be built, electricity and community water available on site, this is a perfect property for horse or cattle operations.

**\$1100.00 per acre**

**CONTACT:**  
**J. PARKER SARTAIN**  
601.506.2398  
psartain@sartainsheritage.com

**Sartain's Heritage Properties**  
106 First Choice Drive  
Madison, MS 39110  
Phone: 601-856-2720  
Fax: 601-853-6765  
www.SartainsHeritage.com

# 1. Smith County 73.7 acres

