

James Ln

Riverlake Rd



**FULSHEAR'S FRED BRAY RANCH** Satellite

© 2013 Google

Google earth





Barn #1

Barn #2

Barn #3

Barn #6

Barn #5

Barn #4

Round  
Pen

Kennels



***FULSHEAR'S FRED BRAY RANCH West-side improvements***





Round  
Pen

Covered  
Arena



© 2013 Google  
**FULSHEAR'S FRED BRAY RANCH Arena & Round Pen**

Google earth





Barn #7



***FULSHEAR'S FRED BRAY RANCH Barn #7***



An aerial photograph of a ranch compound. The compound consists of three main buildings: a large house with a dark roof, a smaller carport with a light-colored roof, and an office building with a dark roof. The buildings are situated on a green lawn, with a dirt road and trees in the background. The labels 'Home', 'Carport', and 'Office' are placed over their respective buildings.

Home

Carport

Office



***FULSHEAR'S FRED BRAY RANCH Home - Office Compound***

© 2013 Google

Google earth





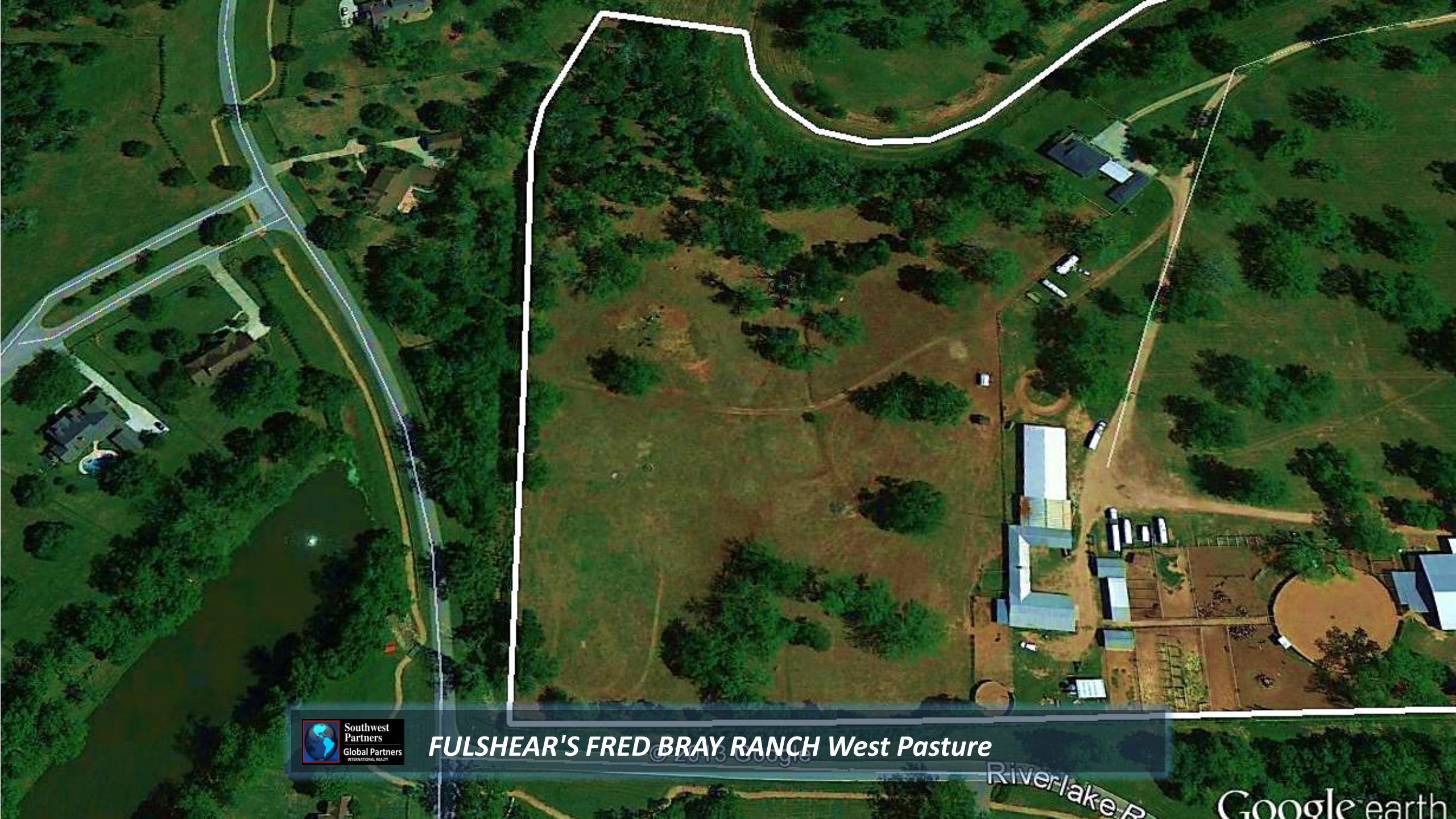
© 2013 Google



**FULSHEAR'S FRED BRAY RANCH** *Equestrian Improvements*

Google earth





**FULSHEAR'S FRED BRAY RANCH West Pasture**

Riverlake P

Google earth

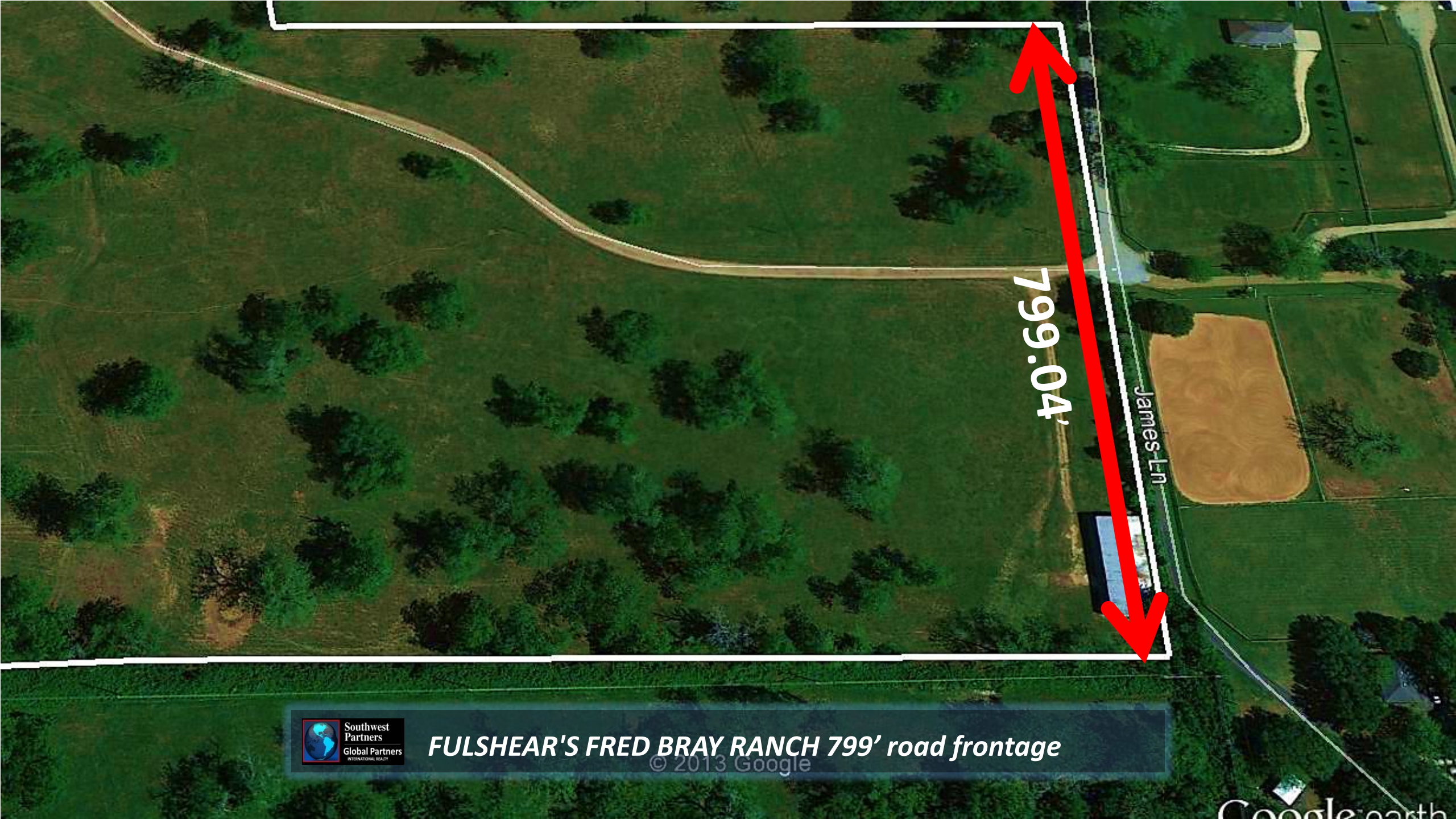




© 2013 Google  
**FULSHEAR'S FRED BRAY RANCH Center Pasture**

Google earth





799.04'

James Ln

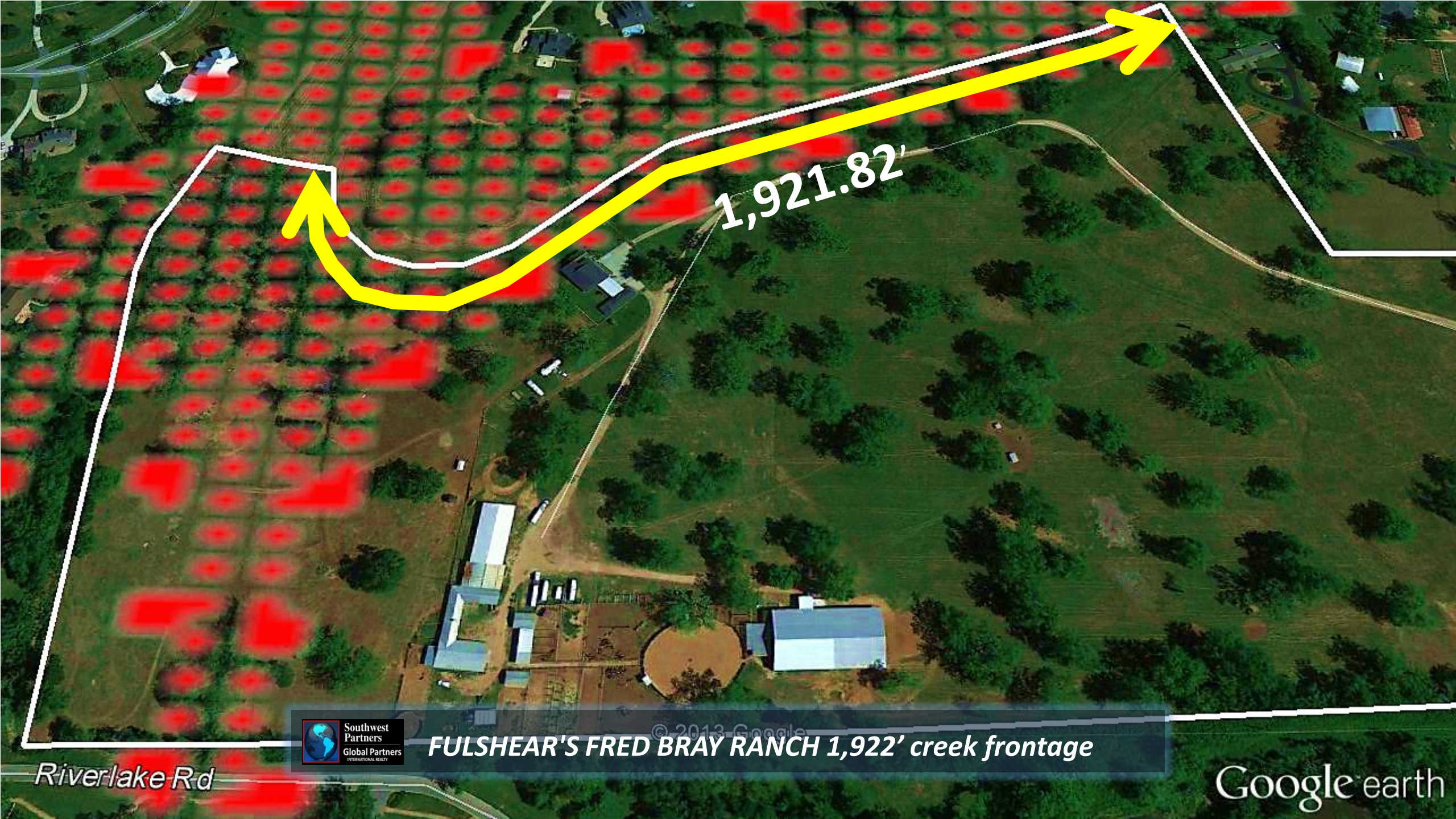


**FULSHEAR'S FRED BRAY RANCH 799' road frontage**

© 2013 Google

Google earth





1,921.82'

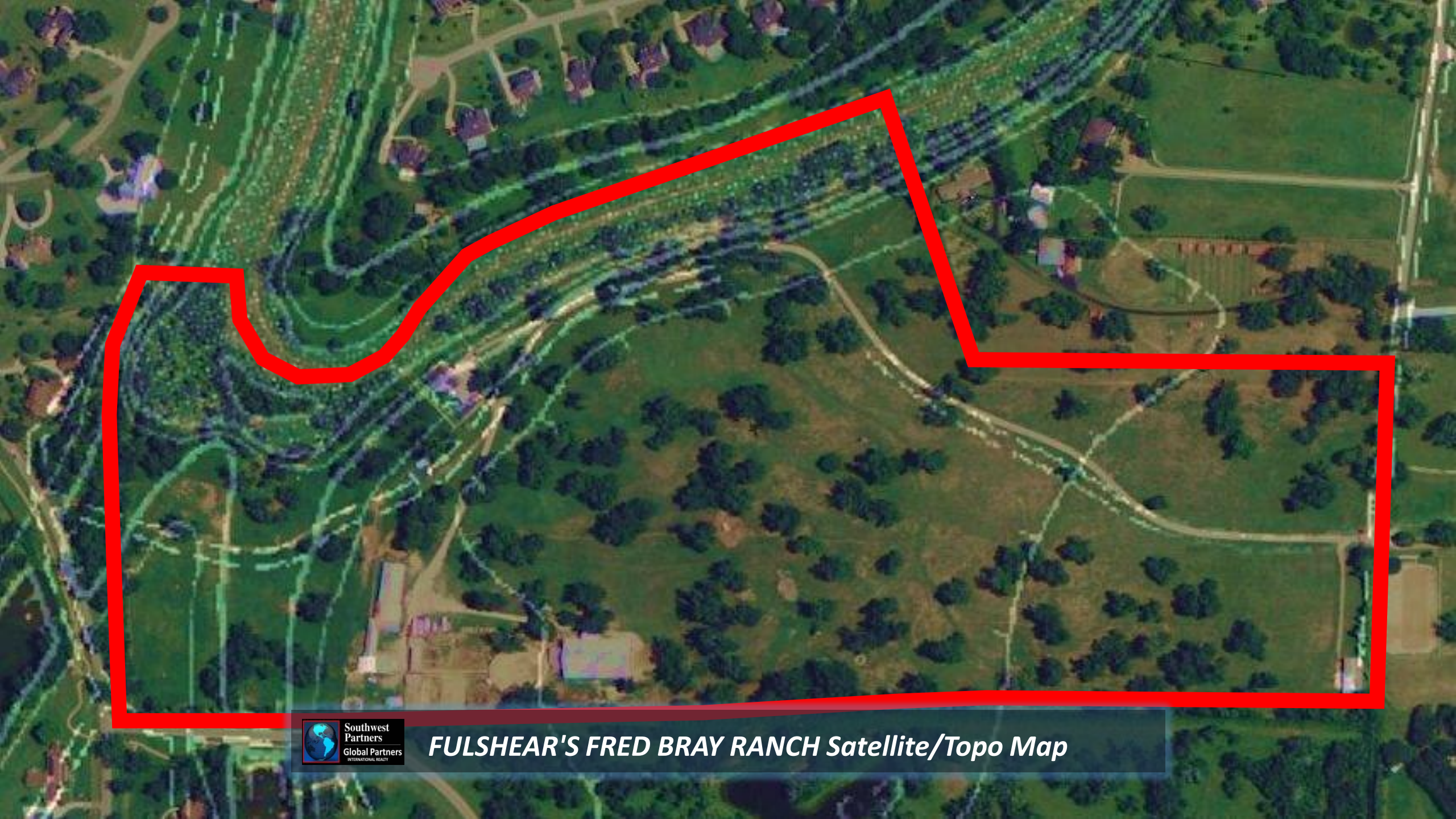


**FULSHEAR'S FRED BRAY RANCH 1,922' creek frontage**

Riverlake Rd

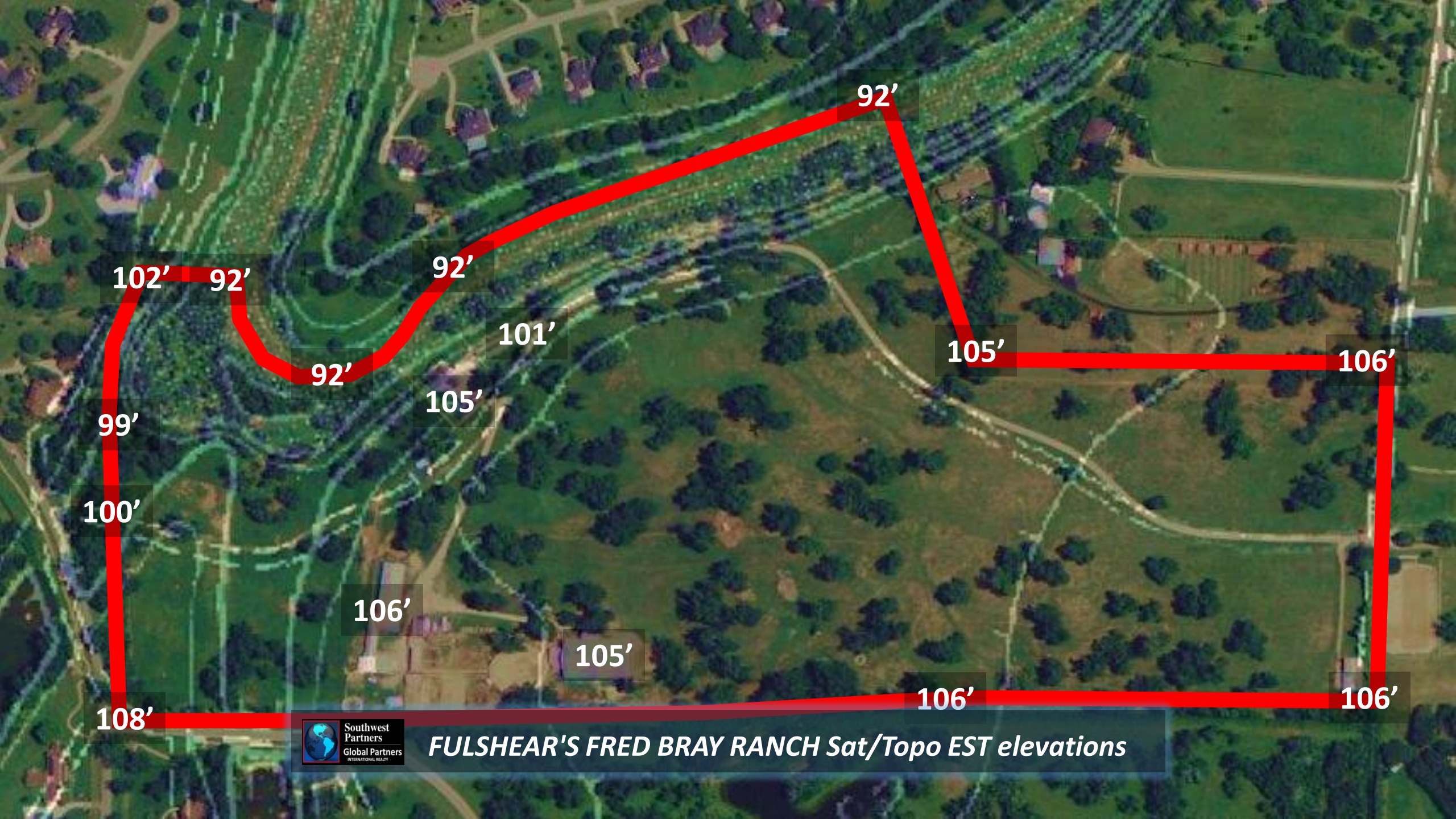
Google earth





***FULSHEAR'S FRED BRAY RANCH Satellite/Topo Map***





102'

92'

92'

101'

92'

105'

105'

106'

99'

100'

106'

105'

106'

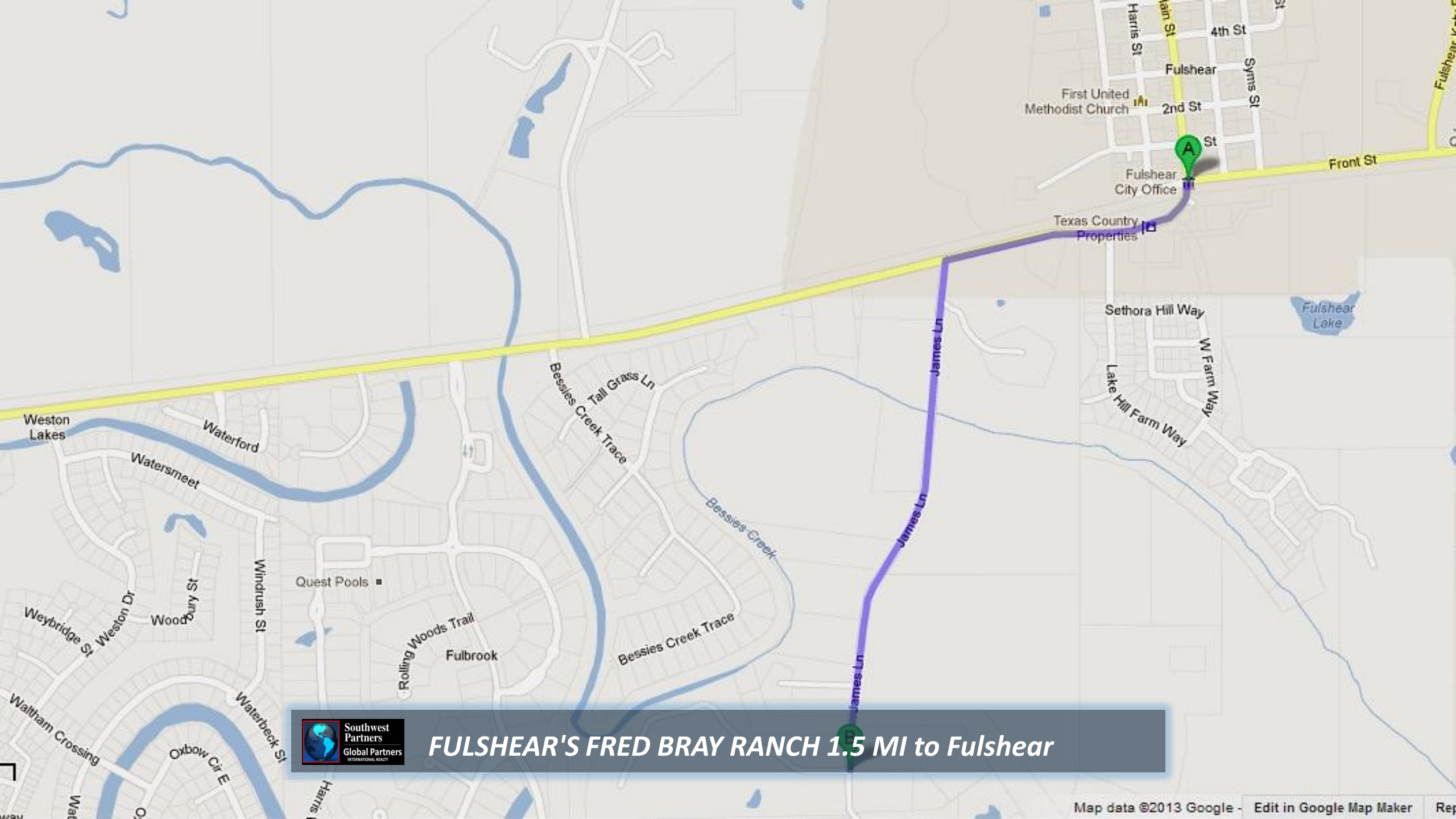
106'

108'



***FULSHEAR'S FRED BRAY RANCH Sat/Topo EST elevations***





**FULSHEAR'S FRED BRAY RANCH 1.5 MI to Fulshear**





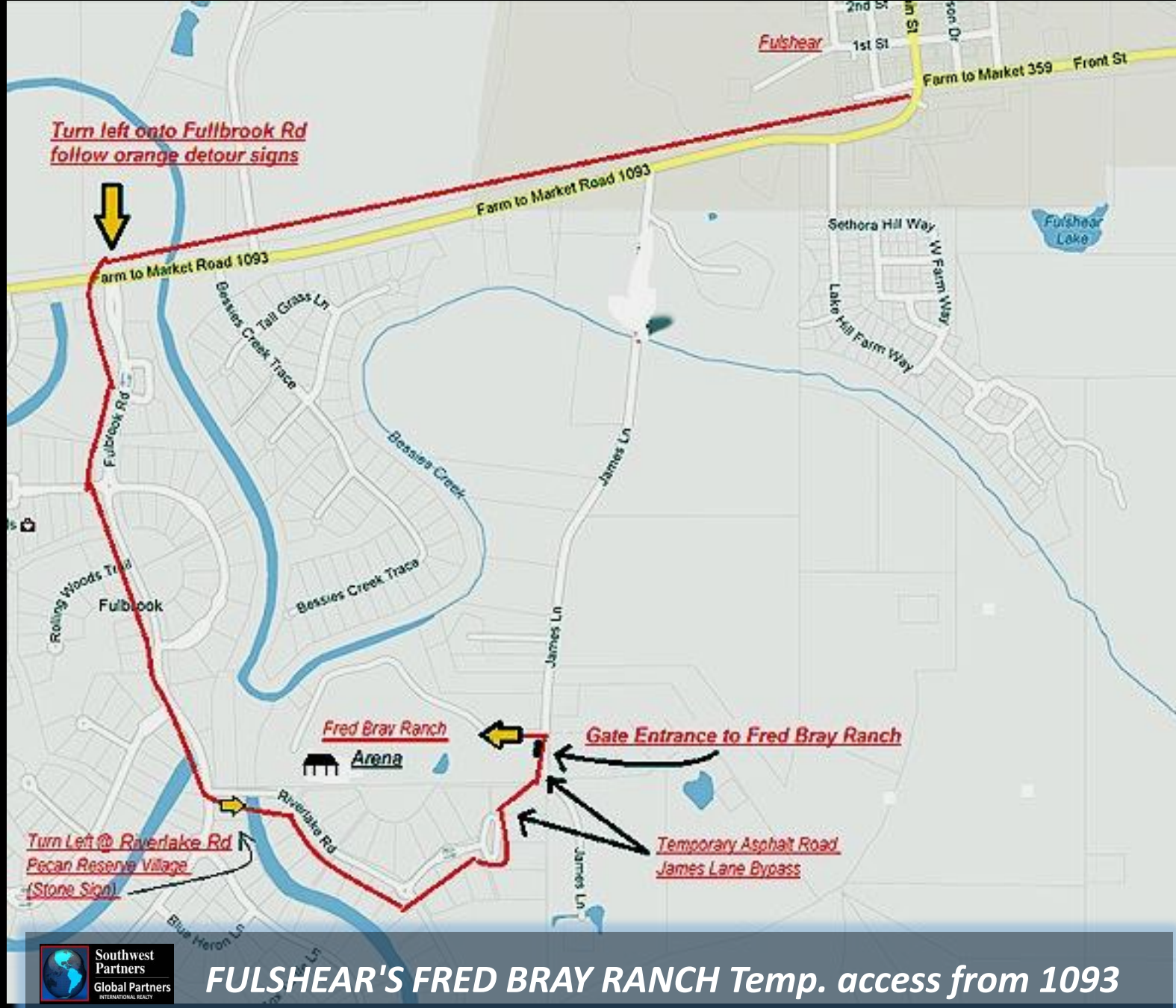
Map data ©2013 Google - [Edit in Google Map Maker](#)





Map data ©2013 Google - Edit in Google Map Maker Rep





**FULSHEAR'S FRED BRAY RANCH Temp. access from 1093**





**FULSHEAR'S FRED BRAY RANCH WNW Section/Neighbors**

Google earth



Bessies-Creek-Trace



© 2013 Google  
**FULSHEAR'S FRED BRAY RANCH NNW Section/Neighbors**

Google earth





© 2013 Google  
**FULSHEAR'S FRED BRAY RANCH North Section/Neighbors**

Google earth





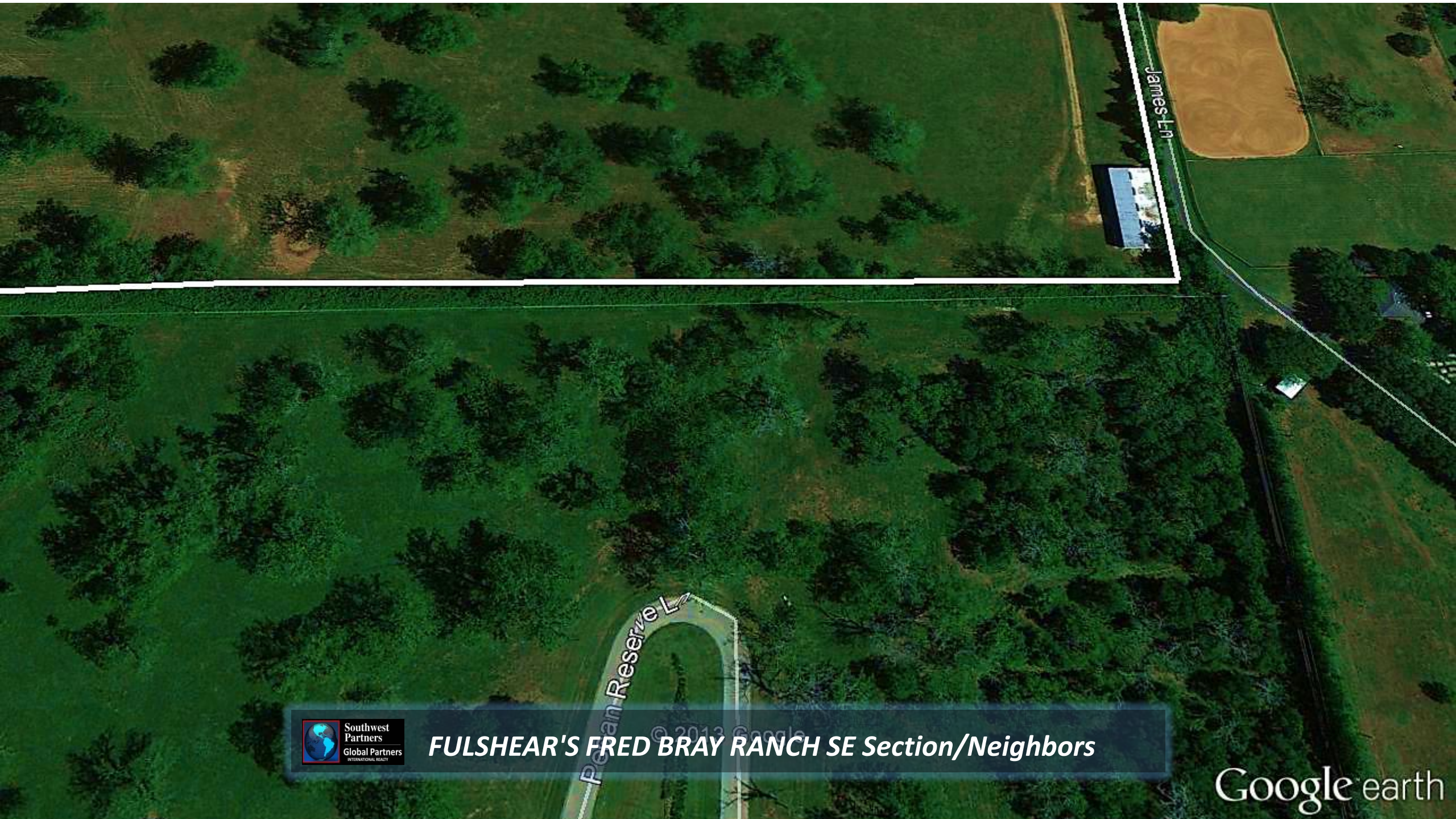
James Ln



**FULSHEAR'S FRED BRAY RANCH East Section/Neighbors**

Google earth





**FULSHEAR'S FRED BRAY RANCH SE Section/Neighbors**

Google earth





**FULSHEAR'S FRED BRAY RANCH SW Section/Neighbors**

Google earth



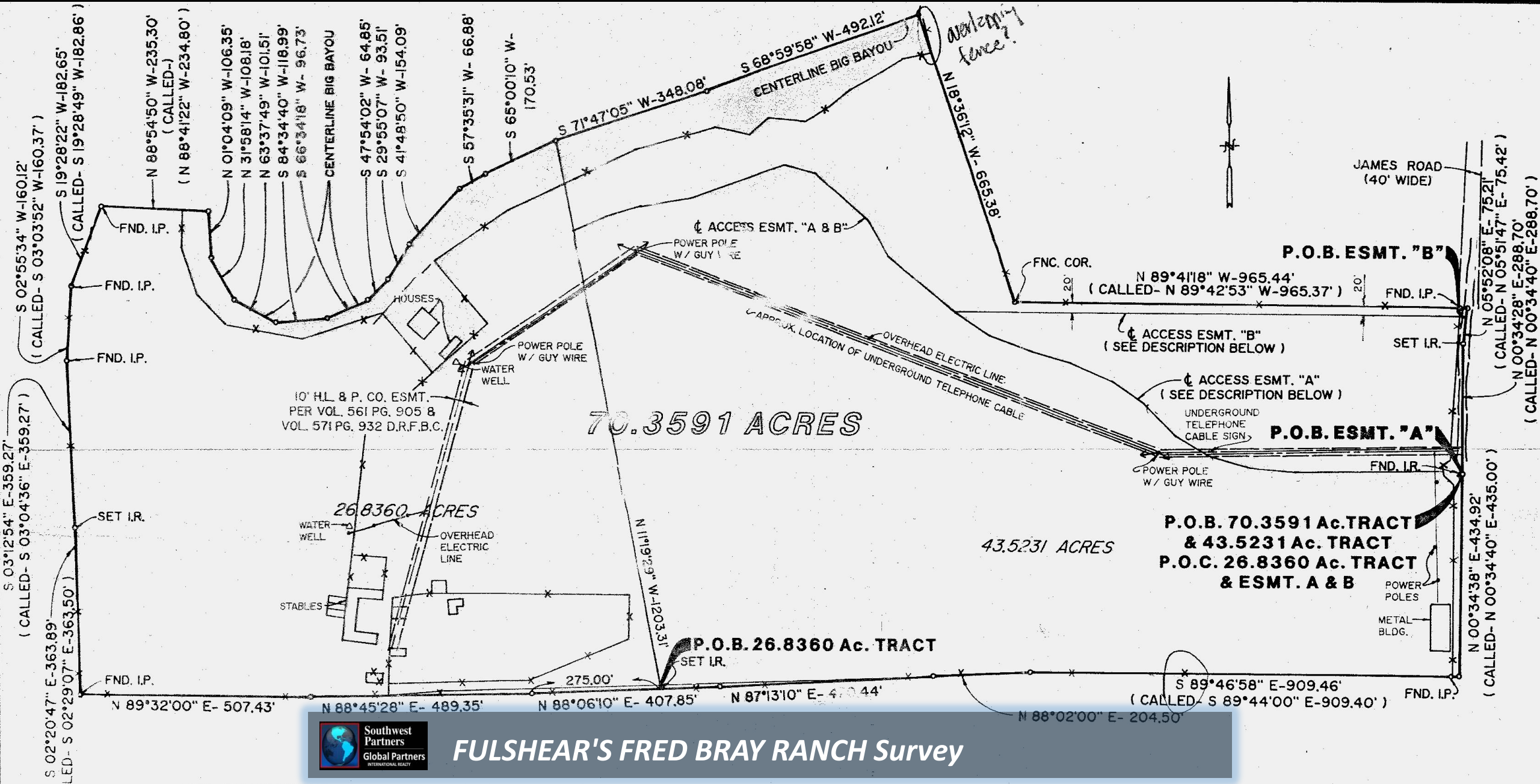


© 2013 Google

***FULSHEAR'S FRED BRAY RANCH West Section/Neighbors***

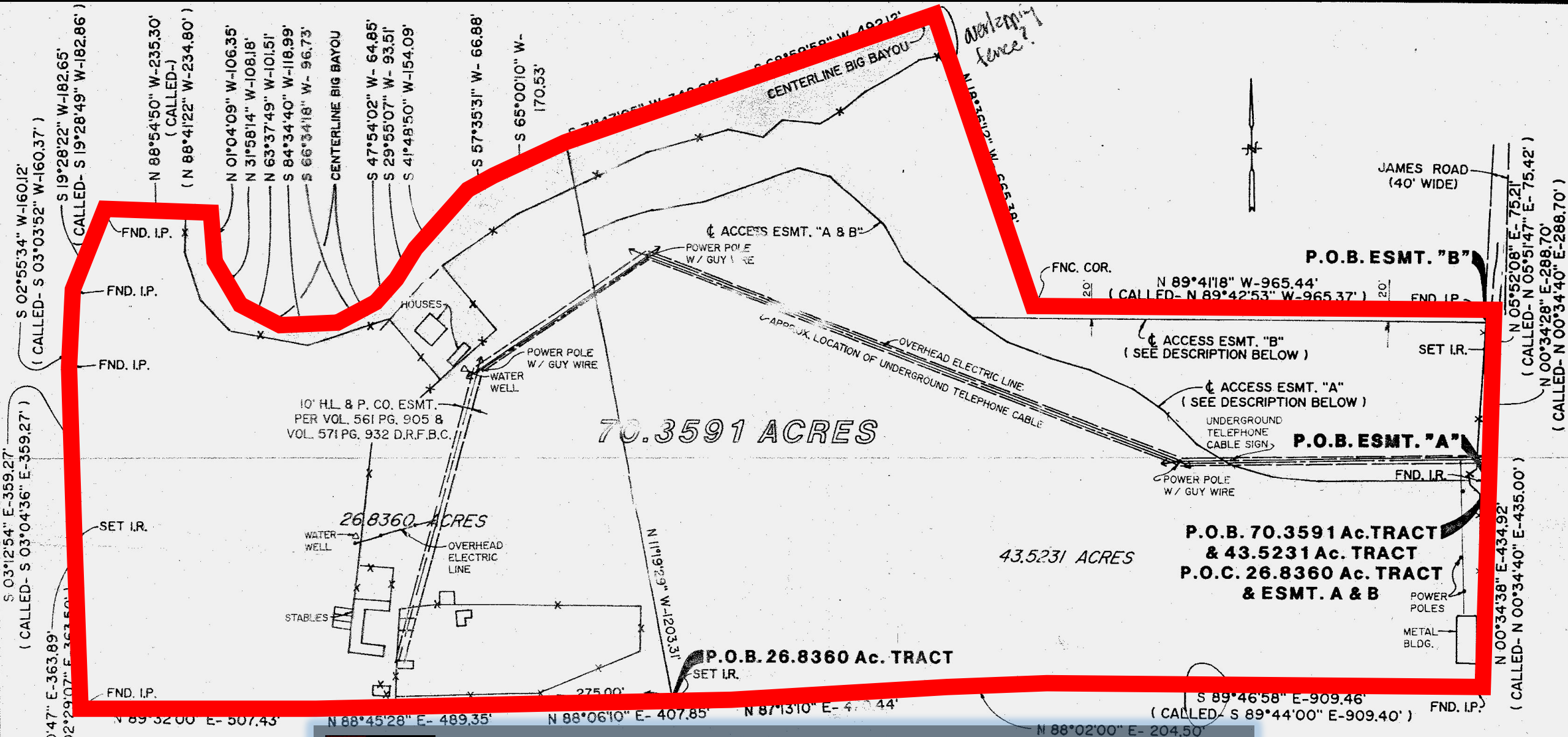
Google earth





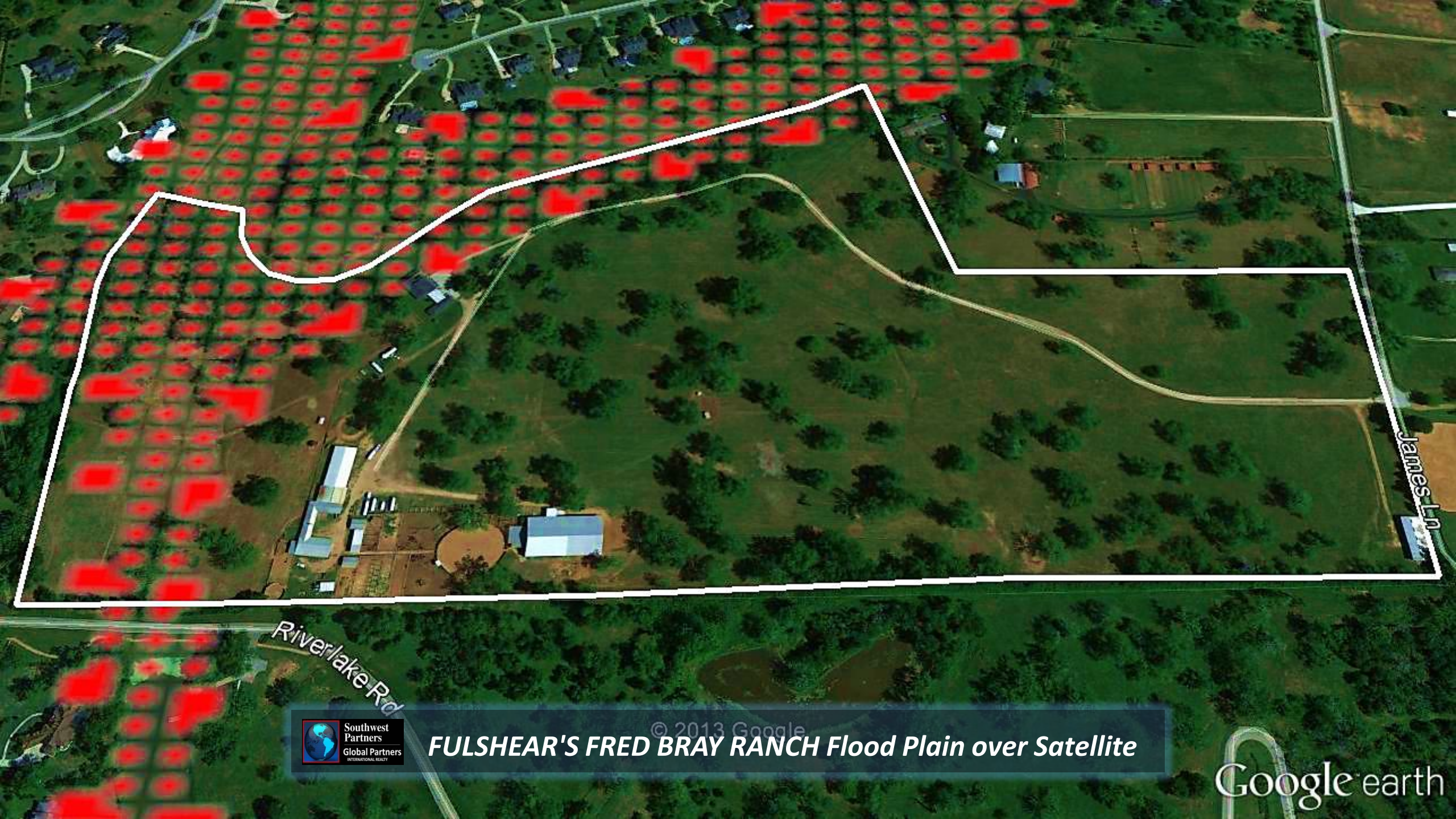
# FULSHEAR'S FRED BRAY RANCH Survey





**FULSHEAR'S FRED BRAY RANCH Survey Property Red Line**

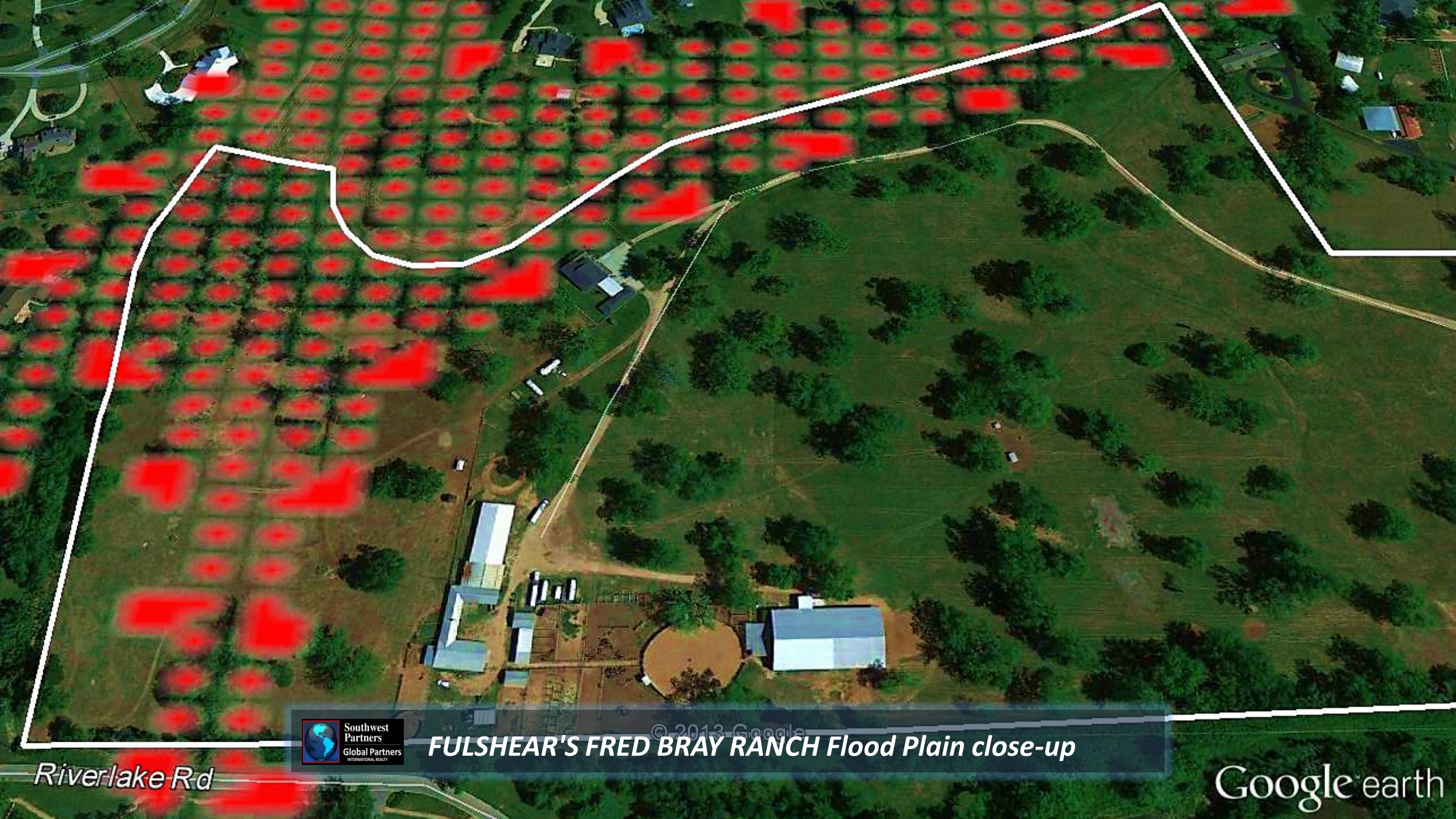




© 2013 Google  
**FULSHEAR'S FRED BRAY RANCH Flood Plain over Satellite**

Google earth

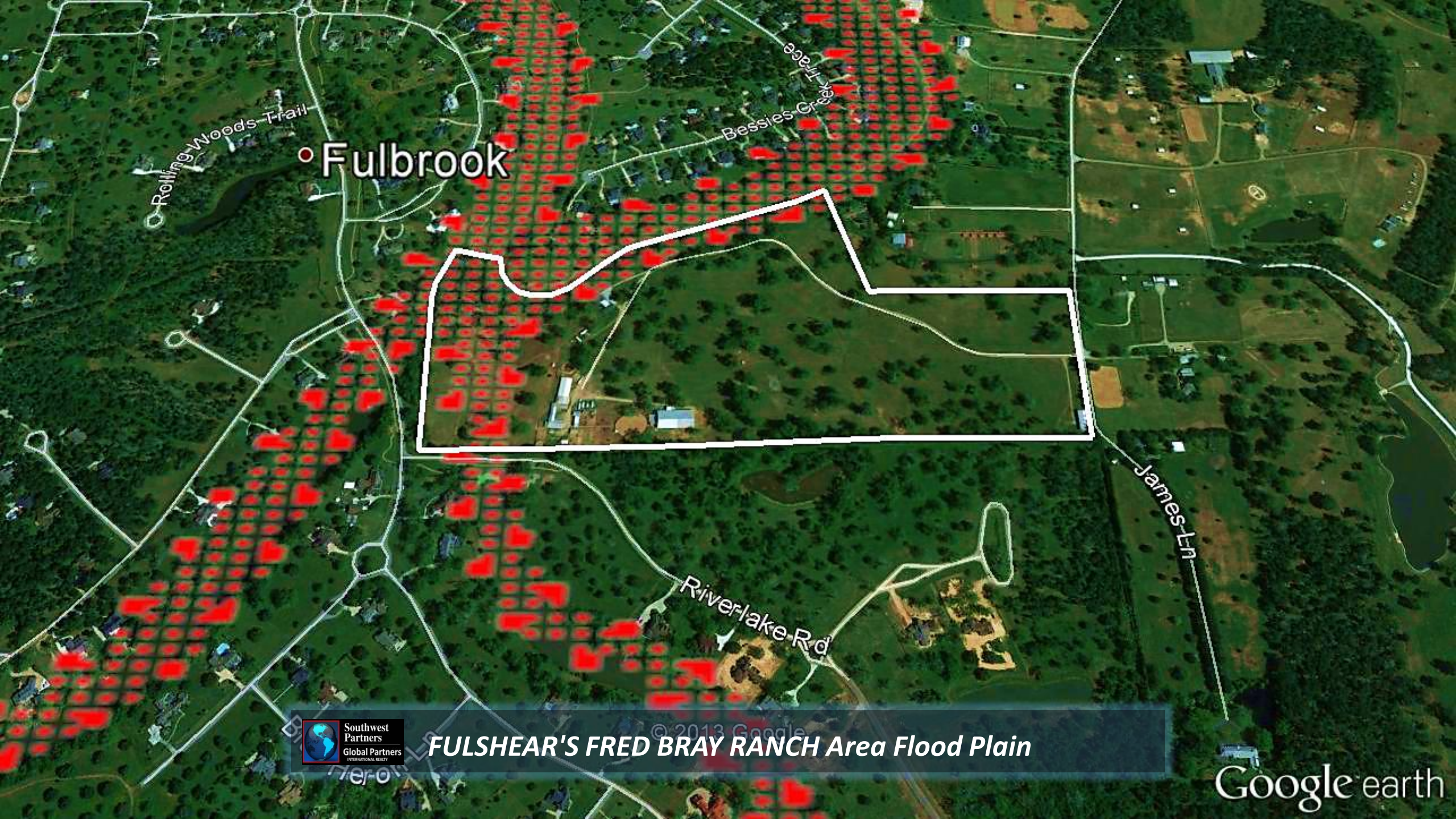




**FULSHEAR'S FRED BRAY RANCH Flood Plain close-up**

Google earth





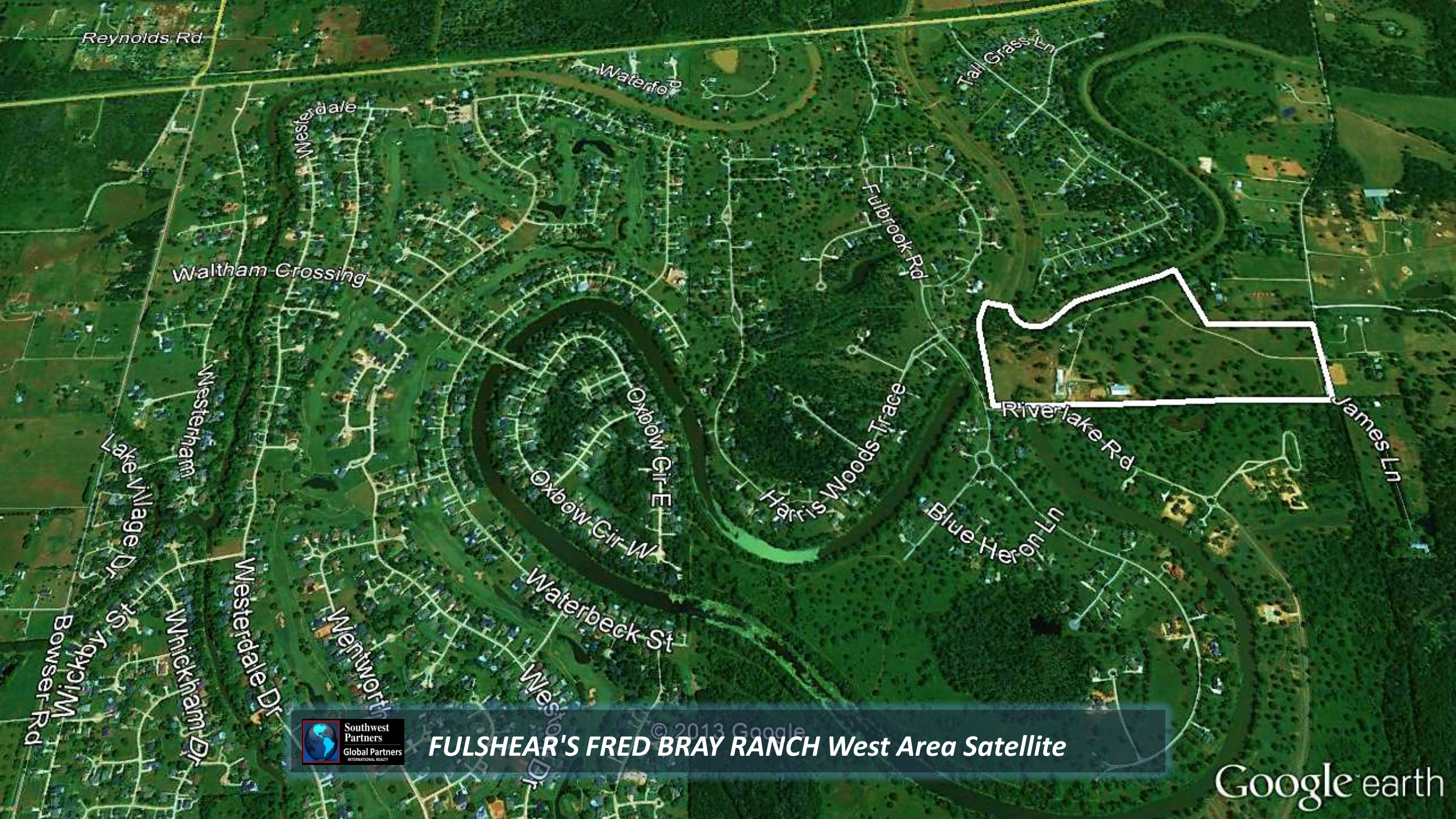
• Fulbrook



**FULSHEAR'S FRED BRAY RANCH Area Flood Plain**

Google earth

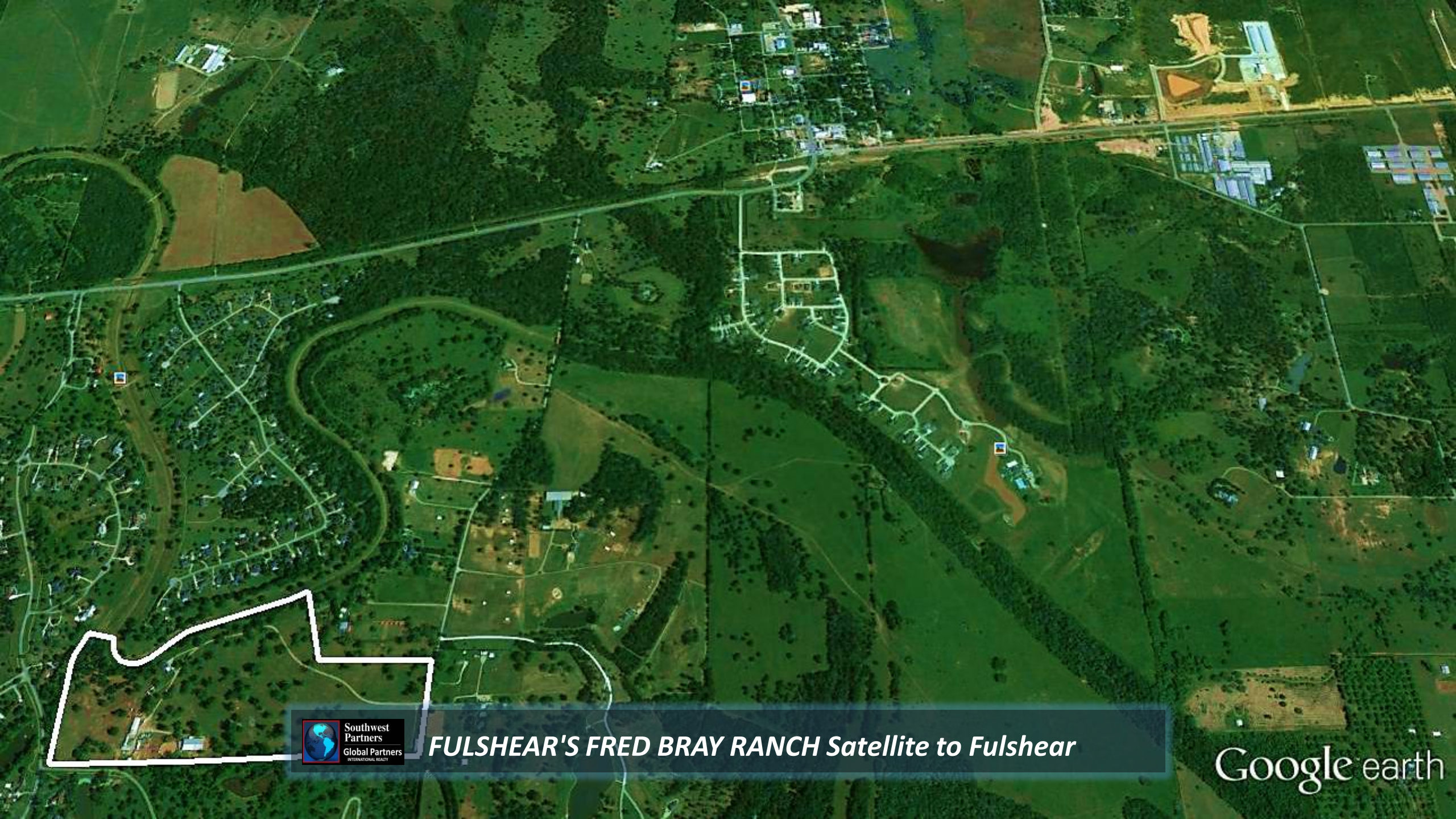




© 2013 Google  
**FULSHEAR'S FRED BRAY RANCH West Area Satellite**

Google earth

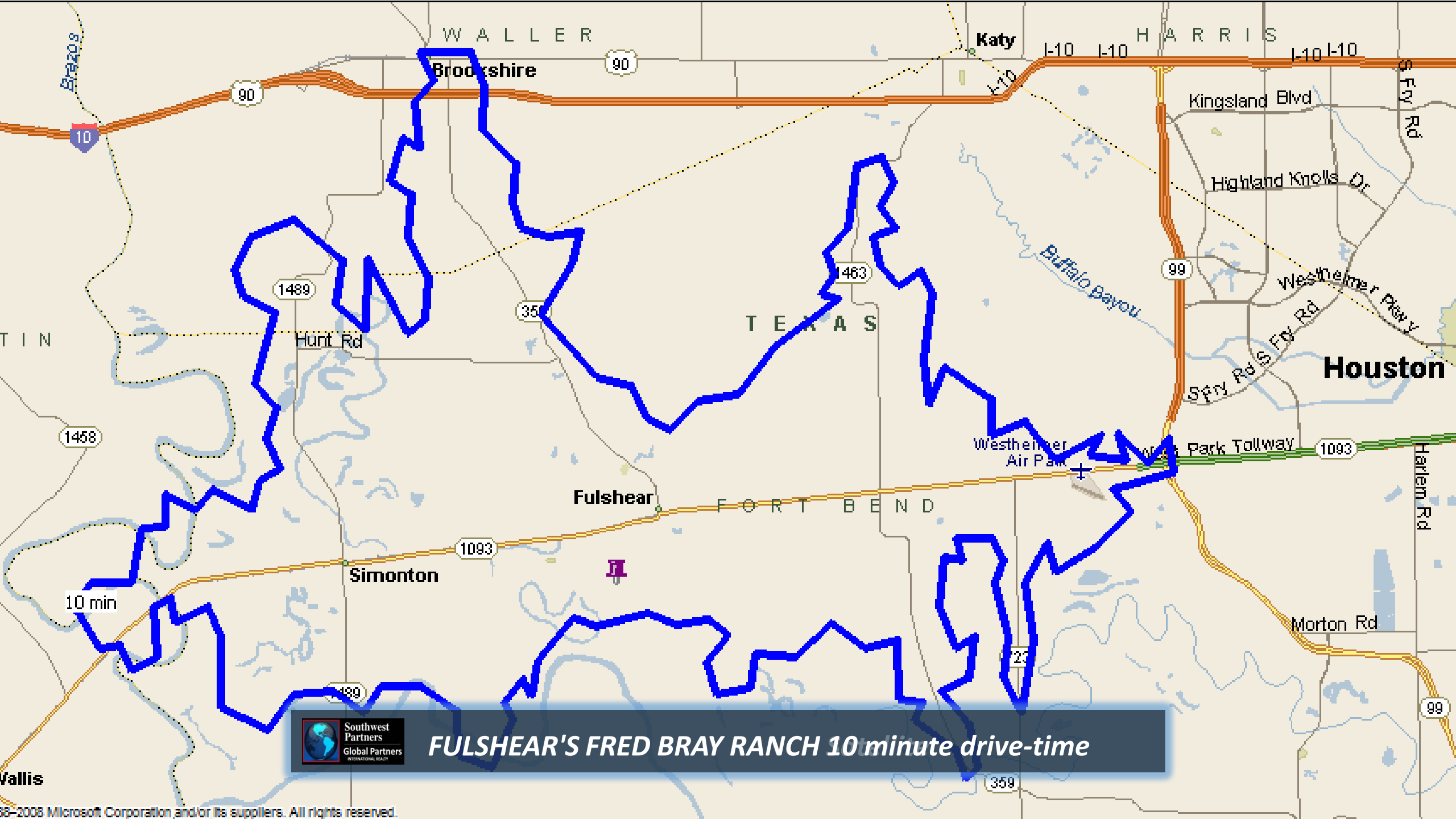




**FULSHEAR'S FRED BRAY RANCH** *Satellite to Fulshear*

Google earth





***FULSHEAR'S FRED BRAY RANCH 10 minute drive-time***





© 2008 Microsoft Corporation and/or its suppliers. All rights reserved.





© 2008 Microsoft Corporation and/or its suppliers. All rights reserved.





<http://www.swpre.com/listing/fred-bray-ranch-2/>



***FULSHEAR'S FRED BRAY RANCH***





**Southwest  
Partners**

---

**Global Partners**  
INTERNATIONAL REALTY

**Mallori Gibbs-Ramey, BA**

**Luxury Ranch Team Leader, REALTOR®, RAINMAKER®**

**M: 713.503.6247**

**[mallori@swpre.com](mailto:mallori@swpre.com)**

**O: 979.421.9996**

**[www.swpre.com/?agent=mallori](http://www.swpre.com/?agent=mallori)**



***FULSHEAR'S FRED BRAY RANCH***