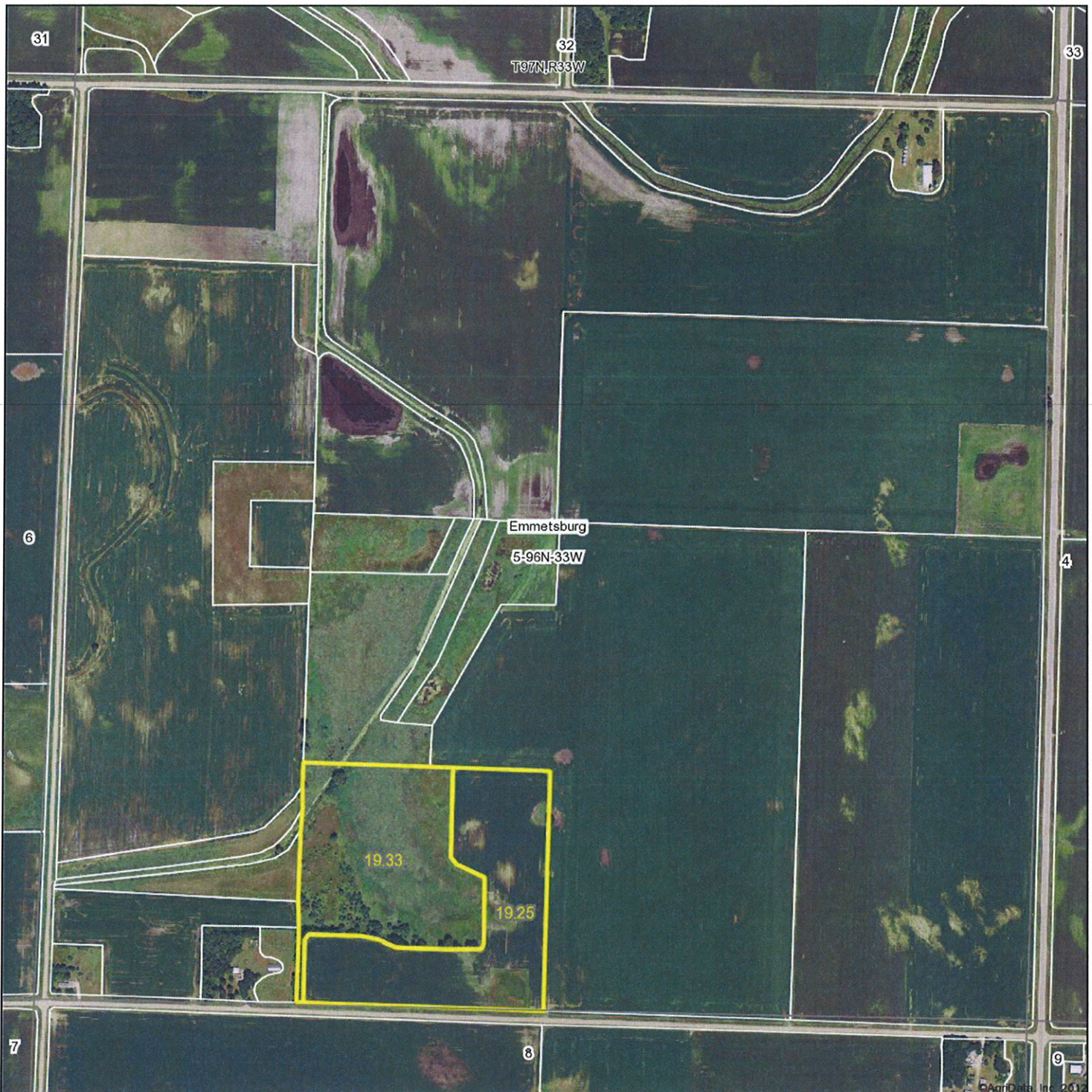


# Aerial Map



**MIDWEST LAND**  
712-262-3110 MANAGEMENT

Maps provided by:



©AgriData, Inc. 2012

[www.AgrIDataInc.com](http://www.AgrIDataInc.com)

**5-96N-33W**  
**Palo Alto County**  
**Iowa**

map center: 43° 9' 45.19, 94° 46' 3.83

scale: 8734

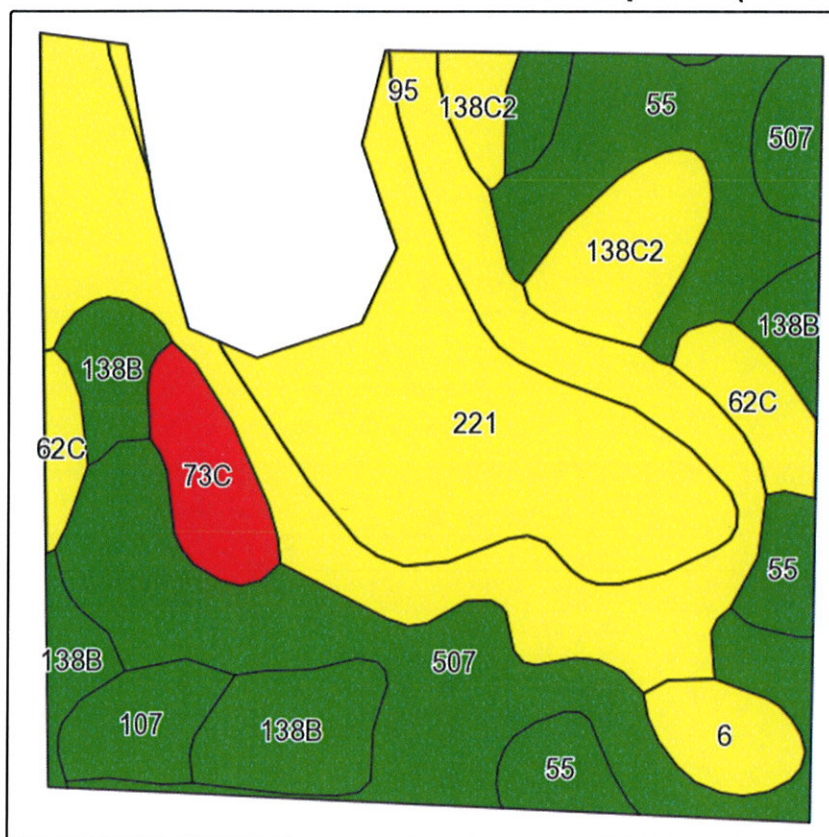


5/9/2013

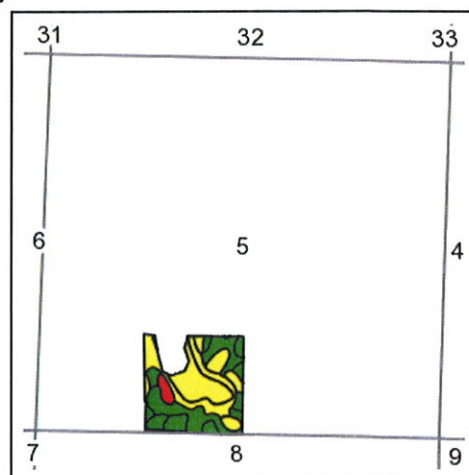
Field borders provided by Farm Service Agency as of 5/21/2008. Aerial photography provided by Aerial Photography Field Office.



## Soils Map-CSR(as of 1/21/12)



Field borders provided by Farm Service Agency as of 5/21/2008.  
Soils data provided by USDA and NRCS.



State: **Iowa**  
County: **Palo Alto**  
Location: **5-96N-33W**  
Township: **Emmetsburg**  
Acres: **32.9**  
Date: **5/6/2013**

**MIDWEST LAND**  
712-262-3110 MANAGEMENT



Maps provided by:



©AgriData, Inc 2012  
www.AgriDataInc.com

Code	Soil Description	Acres	Percent of field	CSR Legend	Non-Irr Class	CSR*	Corn	Soybeans
95	Harps loam, 0 to 2 percent slopes	6.8	20.8%		IIw	59	167	37
507	Canisteo silty clay loam, 0 to 2 percent slopes	6.3	19.2%		IIw	74	187	41
221	Palms muck, 0 to 1 percent slopes	6.2	18.8%		IIIw	47	150	35
55	Nicollet loam, 1 to 3 percent slopes	4	12.1%		I	84	200	47
138B	Clarion loam, 2 to 5 percent slopes	3.4	10.4%		Ile	76	190	43
138C2	Clarion loam, 5 to 9 percent slopes, moderately eroded	1.9	5.8%		IIle	58	165	40
62C	Storden loam, 5 to 9 percent slopes	1.2	3.7%		IIle	48	152	36
73C	Salida gravelly sandy loam, 4 to 12 percent slopes	1.2	3.6%		IVs	5	94	13
107	Webster silty clay loam, 0 to 2 percent slopes	1	2.9%		IIw	79	194	43
6	Okoboji silty clay loam, 0 to 1 percent slopes	0.9	2.6%		IIIw	54	160	34
Weighted Average						62.4	171.2	38.6

Note: ALL soils information on this page is dated 1/21/2012

\*CSR ratings will be available for a limited time to aid in the transition to CSR2.