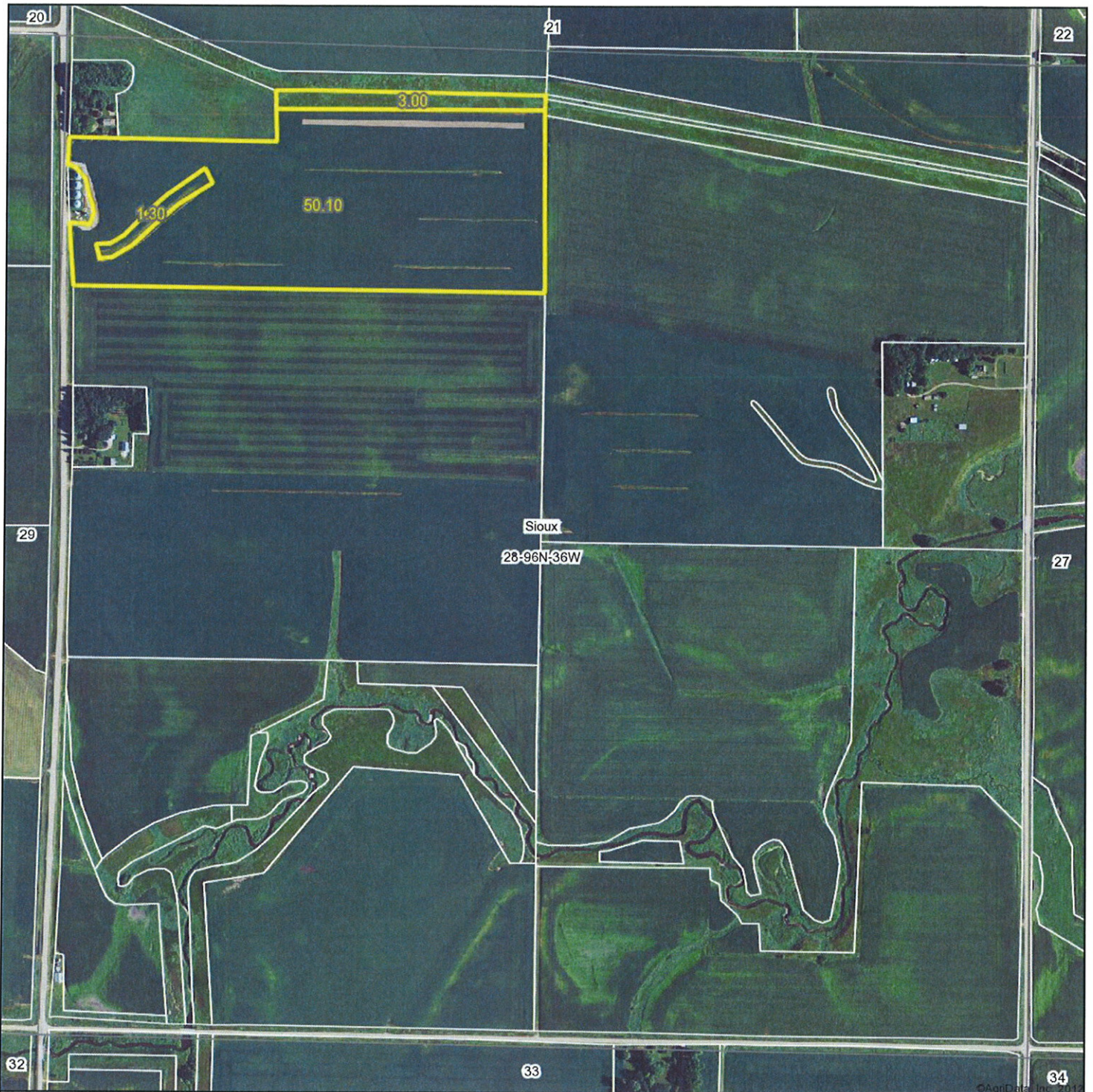


Aerial Map



MIDWEST LAND
MANAGEMENT
712-262-3110

Maps provided by:



©AgriData, Inc. 2012
www.AgriDataInc.com

28-96N-36W
Clay County
Iowa

map center: 43° 6' 18.25, 95° 6' 8.29

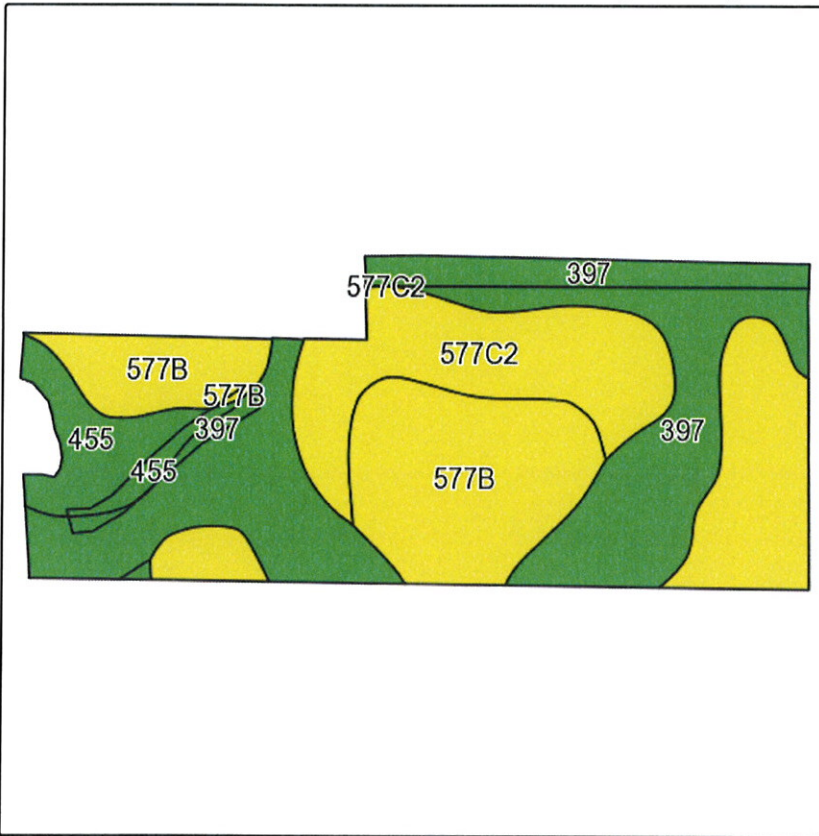
scale: 8760



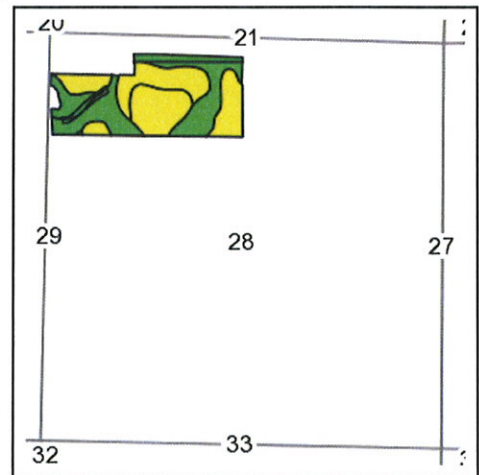
4/29/2013

Field borders provided by Farm Service Agency as of 5/21/2008. Aerial photography provided by Aerial Photography Field Office.

Soils Map-CSR(as of 1/21/12)



Field borders provided by Farm Service Agency as of 5/21/2008.
Soils data provided by USDA and NRCS.



State: **Iowa**
County: **Clay**
Location: **28-96N-36W**
Township: **Sioux**
Acres: **54.4**
Date: **4/29/2013**

& REAL ESTATE, INC.
MIDWEST LAND
712-262-3110 MANAGEMENT



Maps provided by:



©AgriData, Inc 2012
www.AgriDataInc.com

Code	Soil Description	Acres	Percent of field	CSR Legend	Non-Irr Class	CSR*	Corn	Soybeans
577B	Everly clay loam, 2 to 5 percent slopes	20.6	37.8%		Ile	68	177	41
397	Letri clay loam, 0 to 2 percent slopes	20.4	37.5%		Ilw	72	182	44
577C2	Everly clay loam, 5 to 9 percent slopes, moderately eroded	9.5	17.5%		Ille	51	154	37
455	Wilmonton clay loam, 1 to 3 percent slopes	3.9	7.2%		I	74	185	41
Weighted Average						67	175.4	41.4

Note: ALL soils information on this page is dated 1/21/2012

*CSR ratings will be available for a limited time to aid in the transition to CSR2.