



# Cane Creek Road

44 Acres

Madison County, MS



If you have ever wanted a nice piece of land along the Highway 22 corridor just outside Flora, this is your last best chance! 44+/- beautiful acres of rolling pasture with a fishing pond, two watering holes and plenty of shade trees for your horses with a beautiful hilltop home site. Several scopes of woods for those famous Madison County bucks and even a few turkeys roaming about the property which sits directly across Cane Creek Road from Andover. This is an amazingly low priced buy in to one of the most exclusive estate lot areas in Mississippi. The land ownership map in this area reads like a Who's Who of leading Mississippi businessmen, professionals and government leaders. Got school aged children? You can't do better than this: East Flora Elementary, Madison Middle School, Rosa Scott 9<sup>th</sup> Grade and Madison Central High School, home of the Jaguars! This property is on the bus route for every one of those schools! Only \$6,000 per acre buys this beautiful tract of land. (Horses in the pictures belong to the pasture lessee and are not included in this sale).

**\$264,000.00**

**CONTACT:**

**T. LOGAN RUSSELL**

601.259.4789

lrussell@sartainsheritage.com

**Sartain's Heritage Properties**

**106 First Choice Drive**

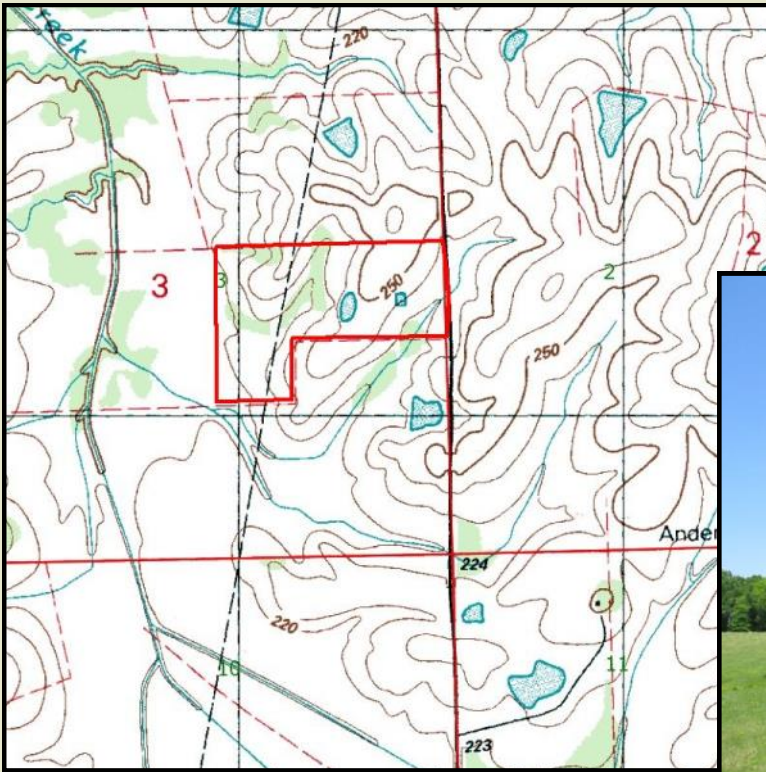
**Madison, MS 39110**

**Phone: 601-856-2720**

**Fax: 601-853-6765**

**www.SartainsHeritage.com**





All information contained herein is supplied by sources deemed reliable, but is not guaranteed by Sartain's Heritage Properties, its Brokers or Agents. Properties are subject to errors, omissions, correction, price change, prior sale or withdrawal without notice.