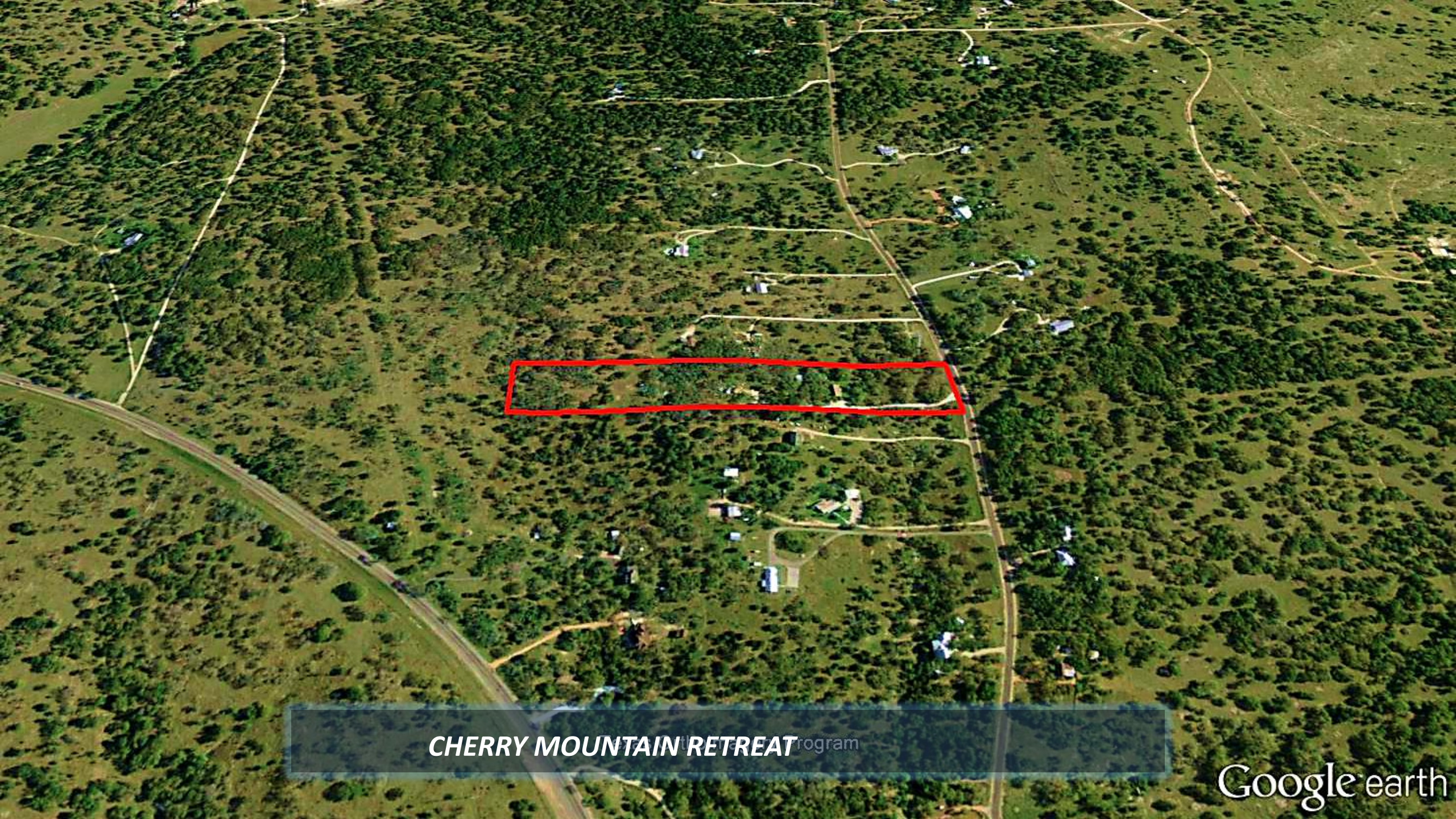


Cherry Mountain Loop



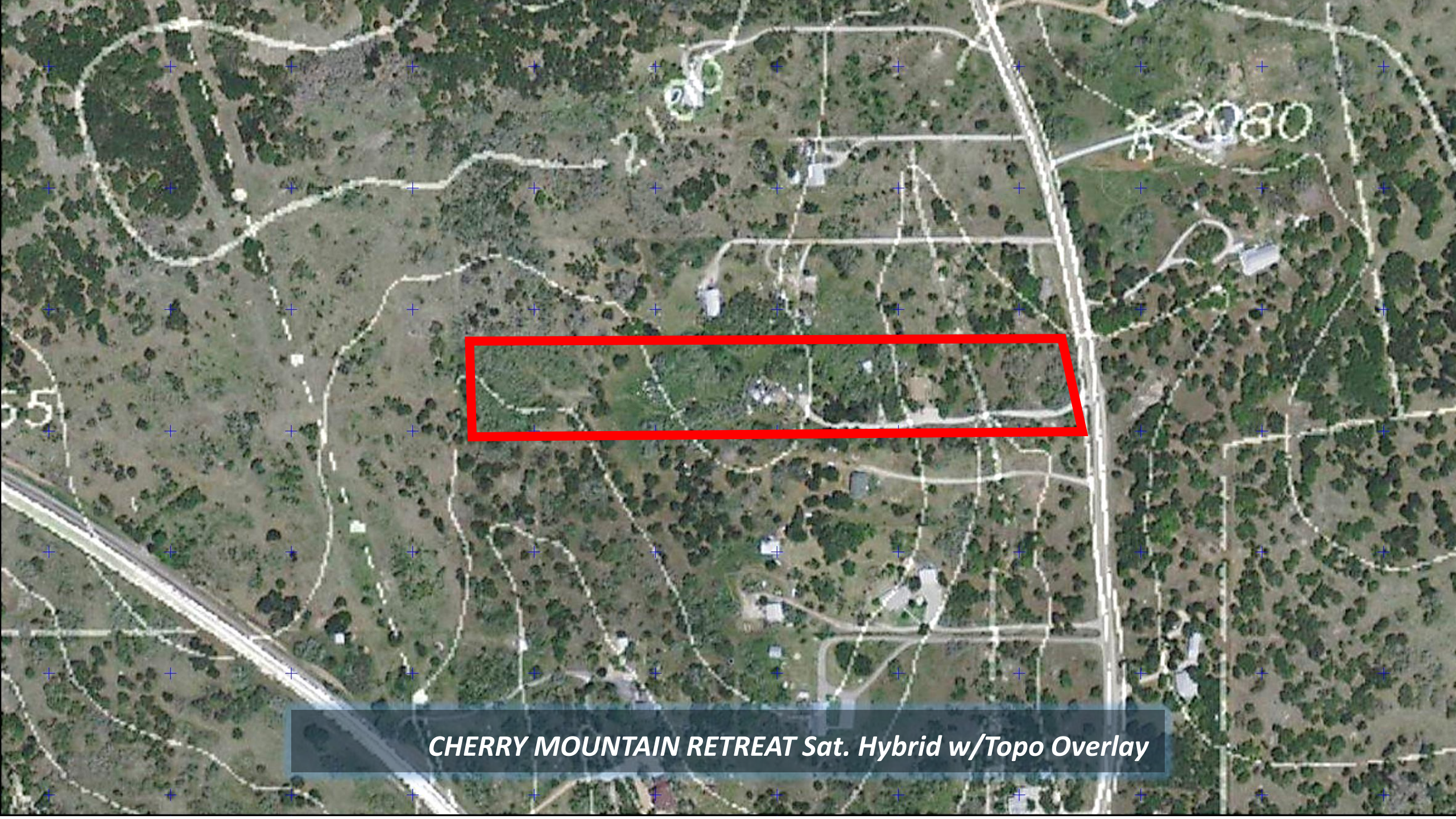
Texas Orthoimagery Program  
**CHERRY MOUNTAIN RETREAT**

Google earth

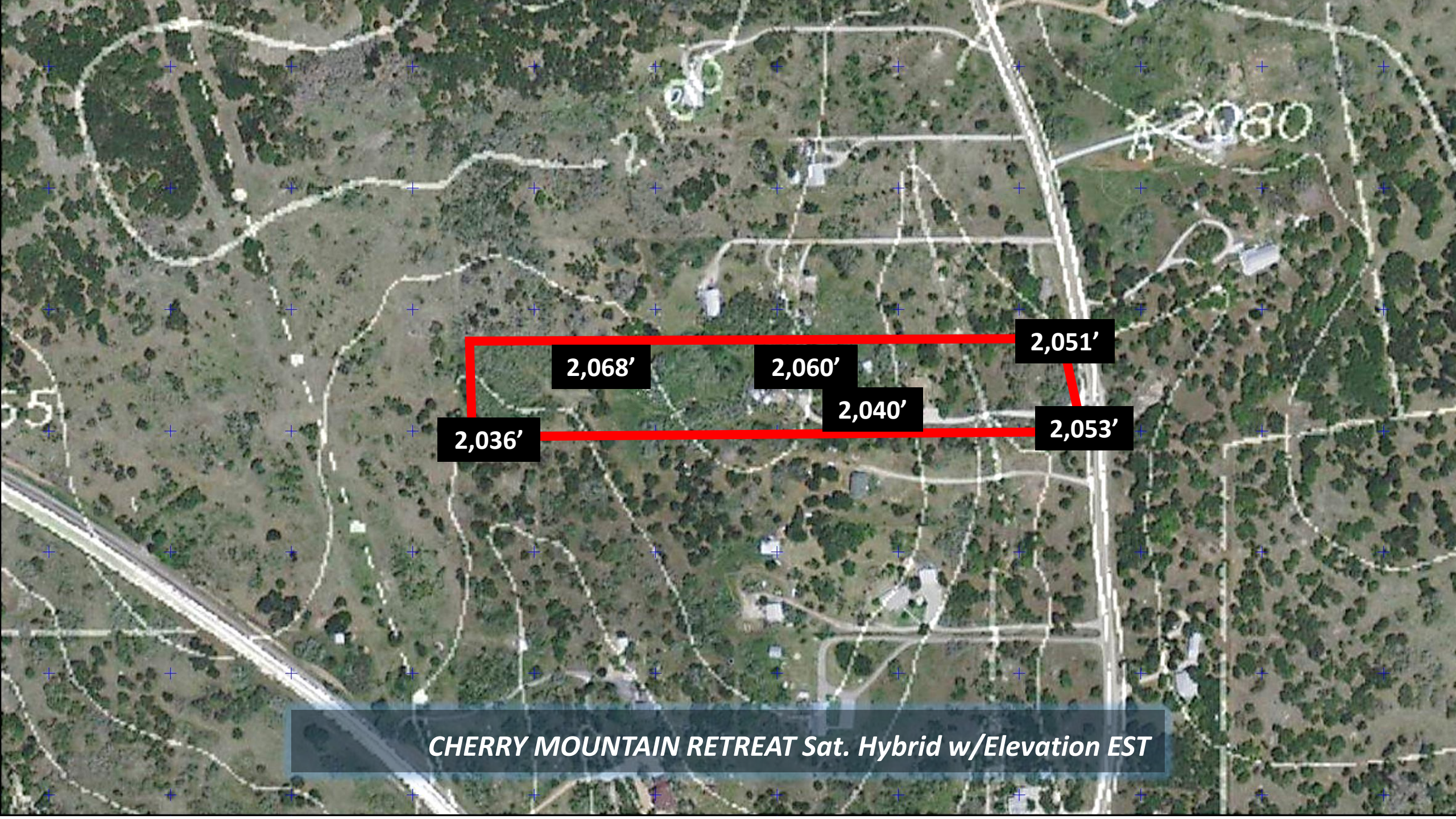


**CHERRY MOUNTAIN RETREAT**rogram

Google earth



***CHERRY MOUNTAIN RETREAT Sat. Hybrid w/Topo Overlay***



2,036'

2,068'

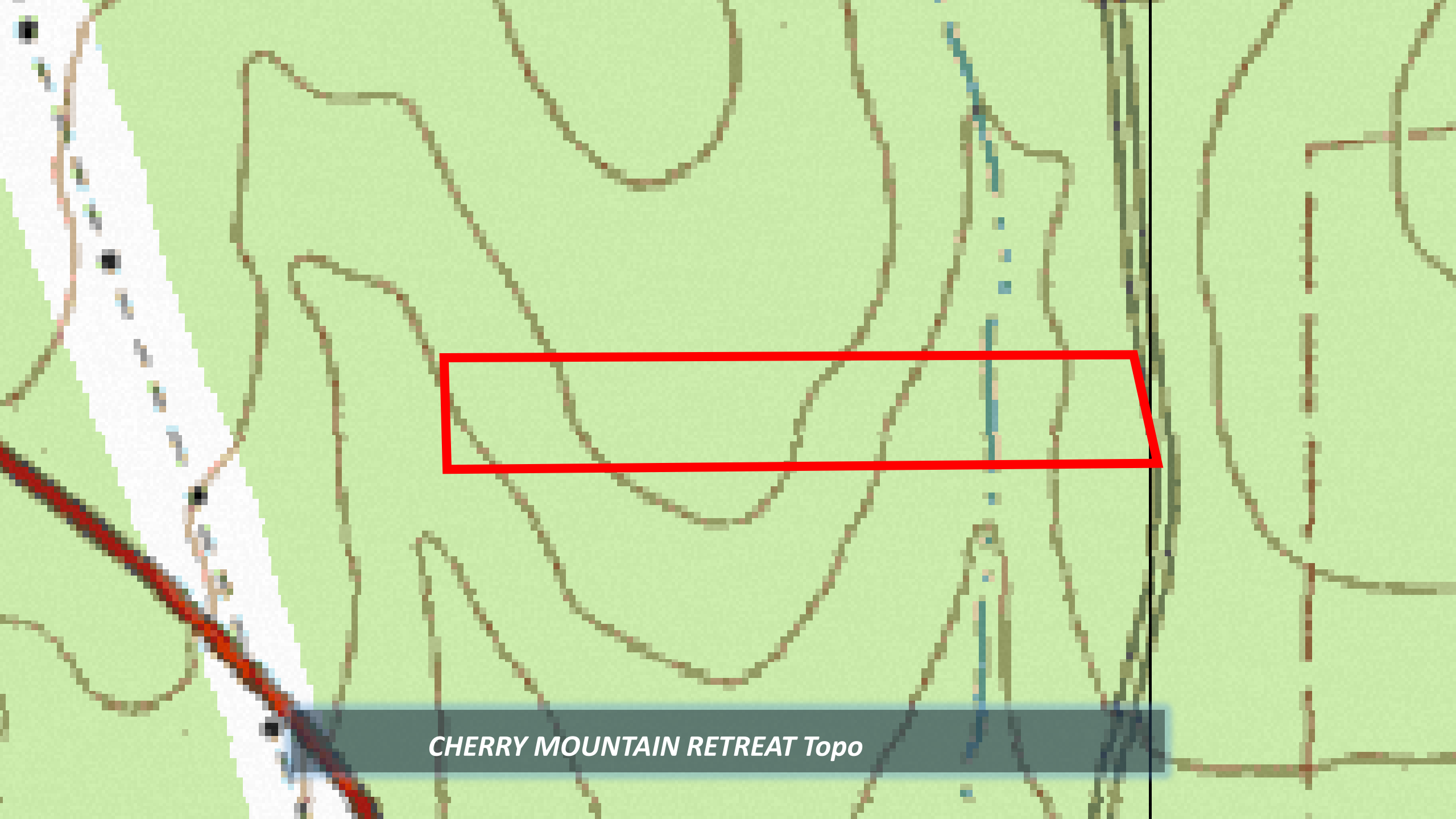
2,060'

2,040'

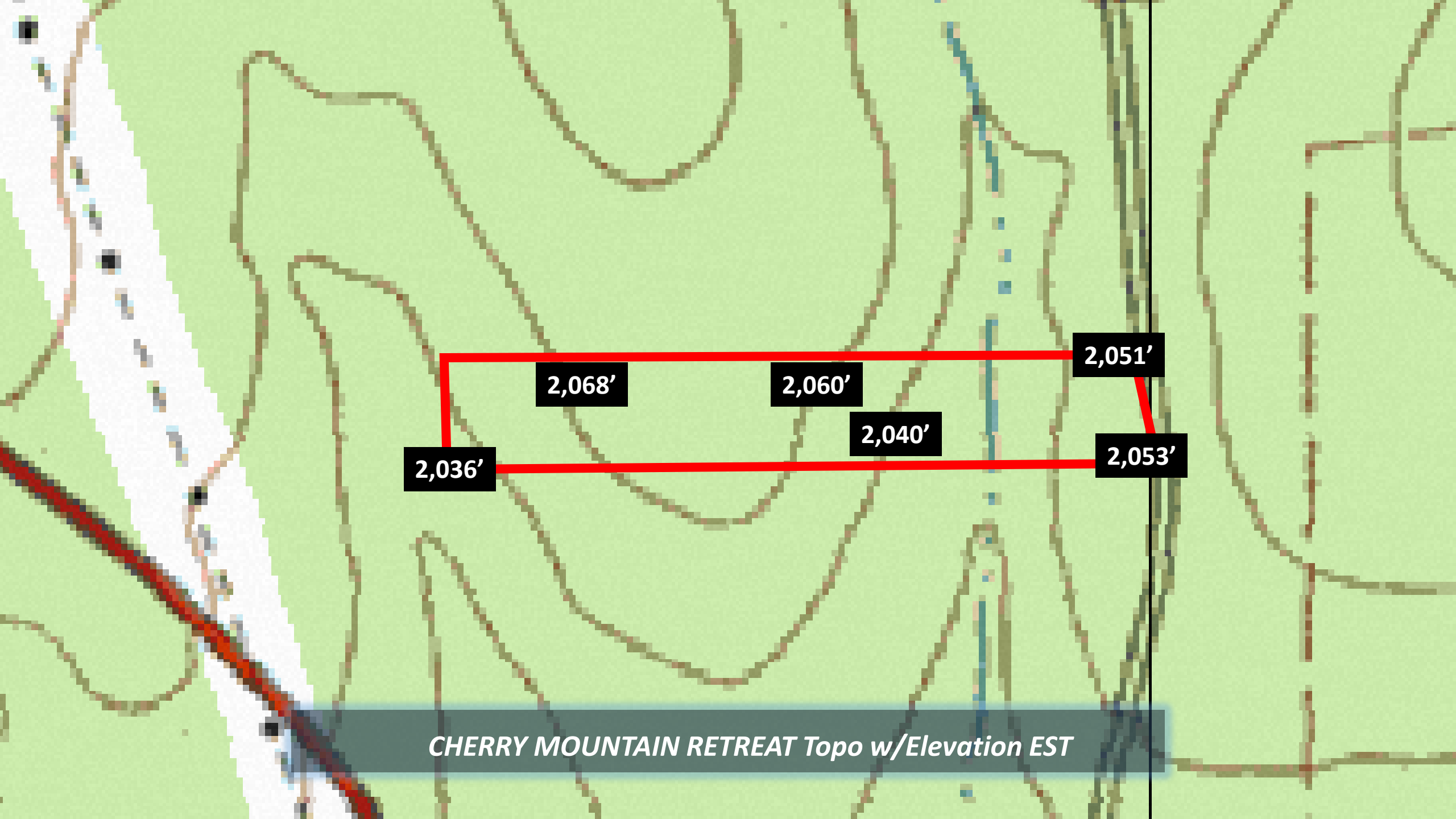
2,051'

2,053'

***CHERRY MOUNTAIN RETREAT Sat. Hybrid w/Elevation EST***



*CHERRY MOUNTAIN RETREAT Topo*



2,036'

2,068'

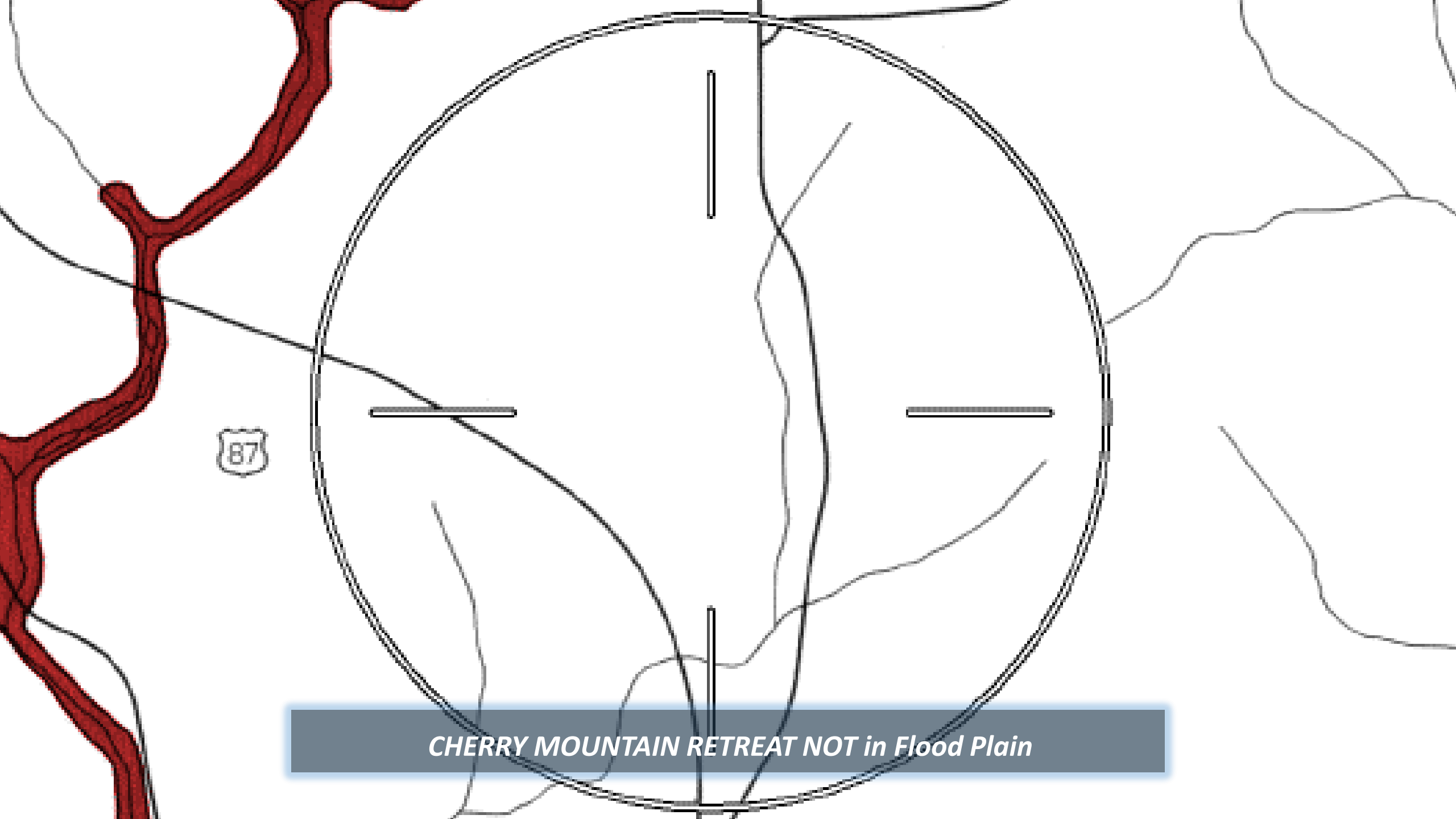
2,060'

2,040'

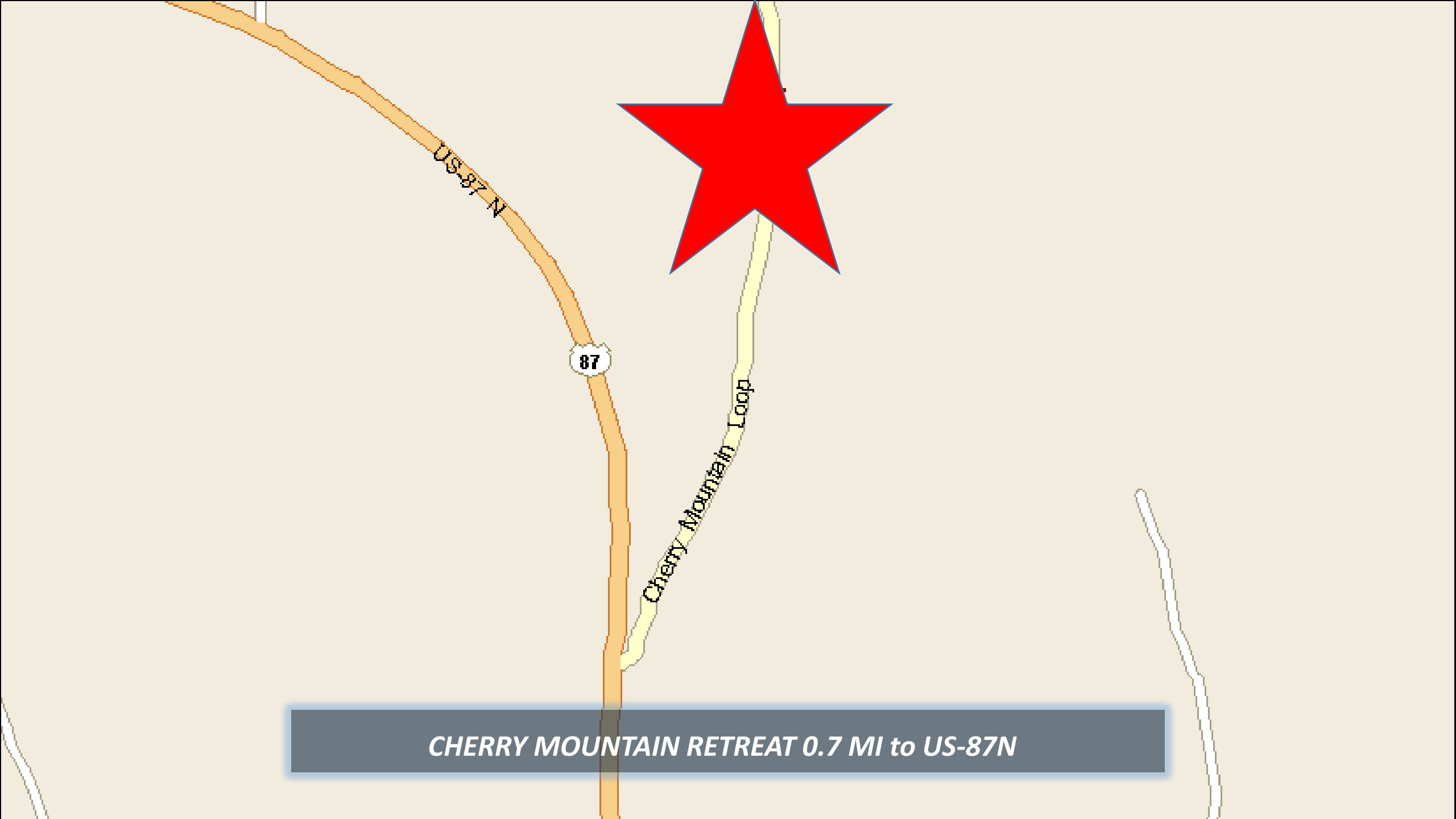
2,051'

2,053'

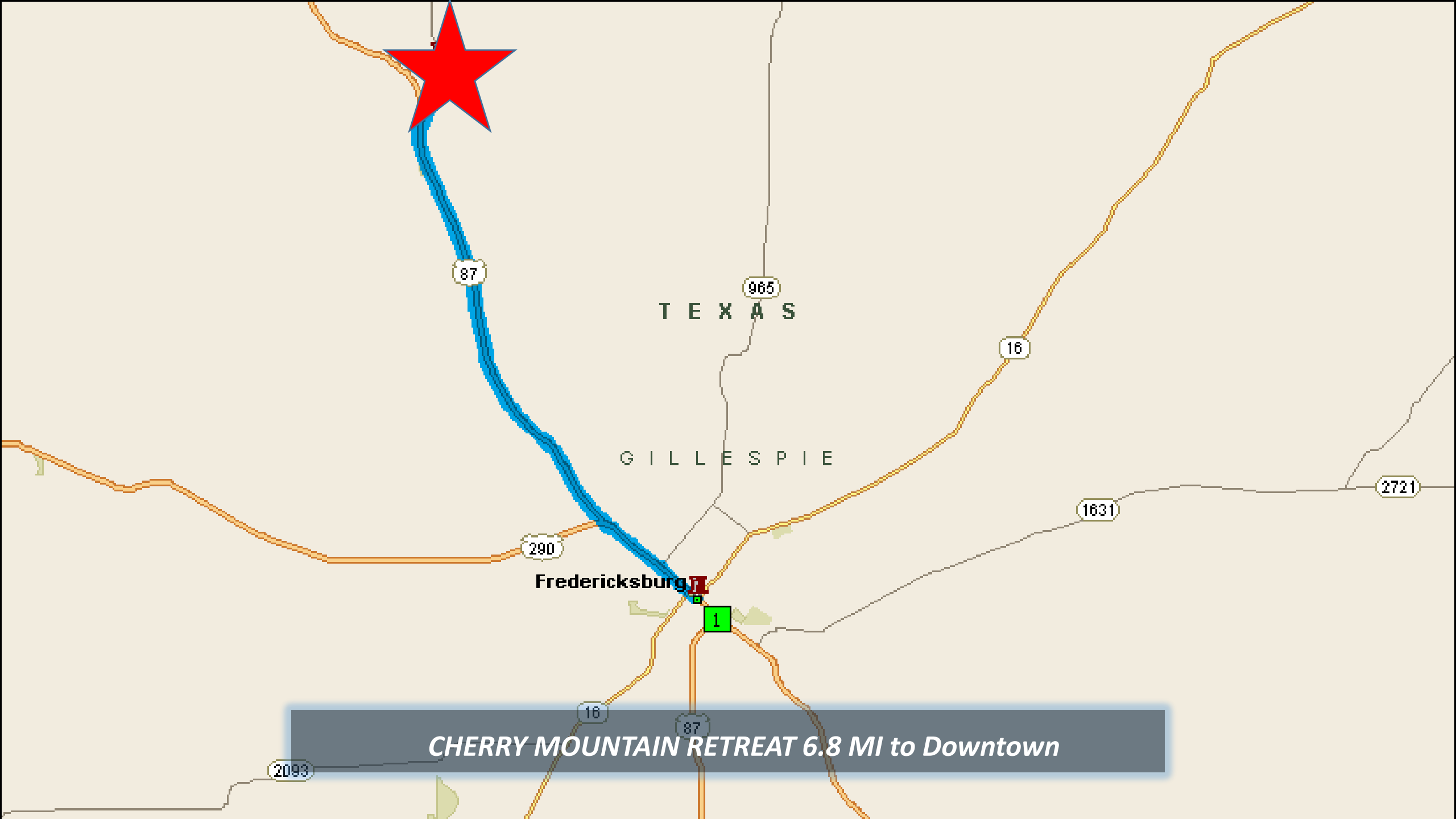
*CHERRY MOUNTAIN RETREAT Topo w/Elevation EST*



*CHERRY MOUNTAIN RETREAT NOT in Flood Plain*



*CHERRY MOUNTAIN RETREAT 0.7 MI to US-87N*

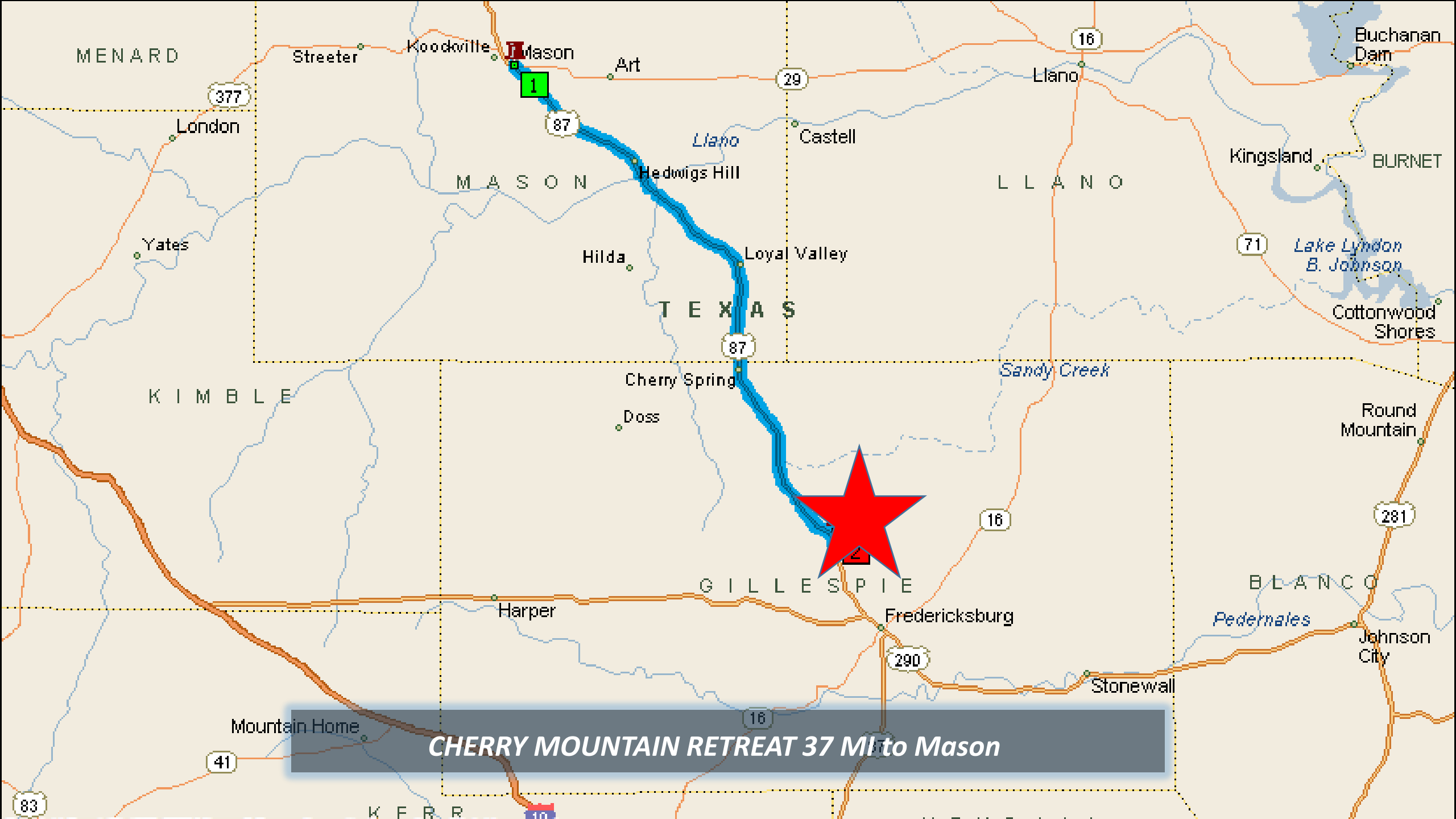


T E X A S

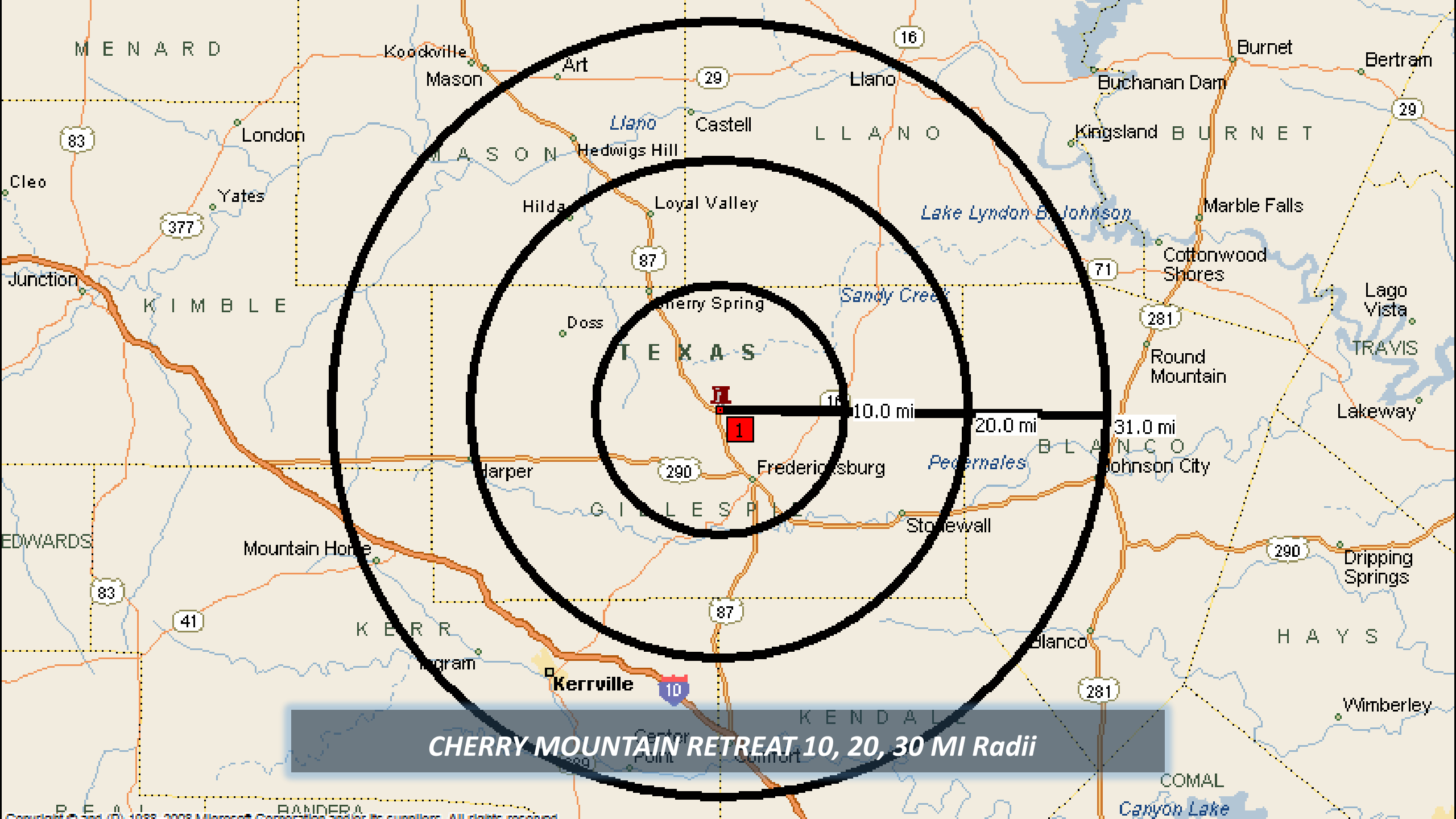
G I L L E S P I E

Fredericksburg

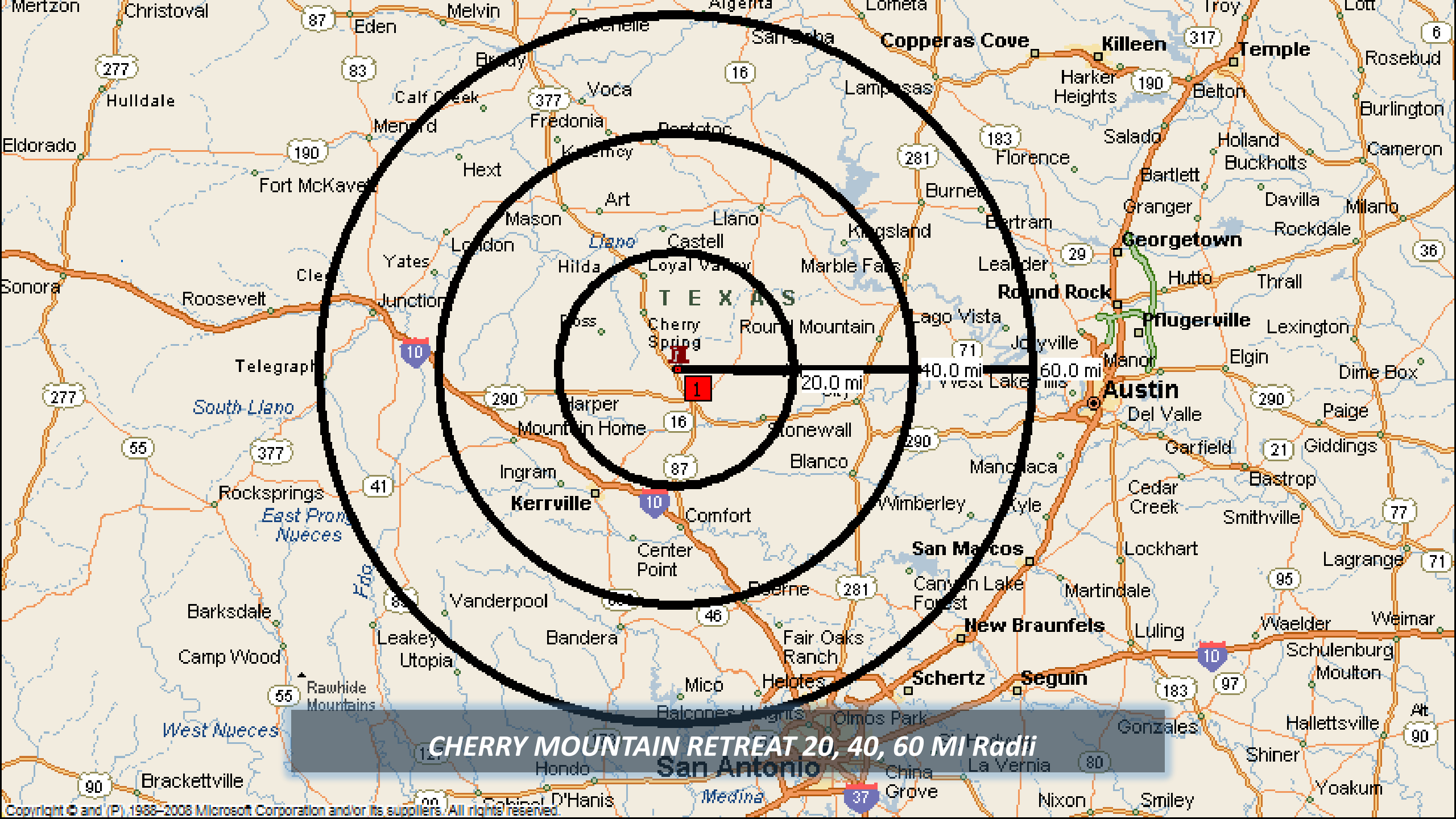
*CHERRY MOUNTAIN RETREAT 6.8 MI to Downtown*

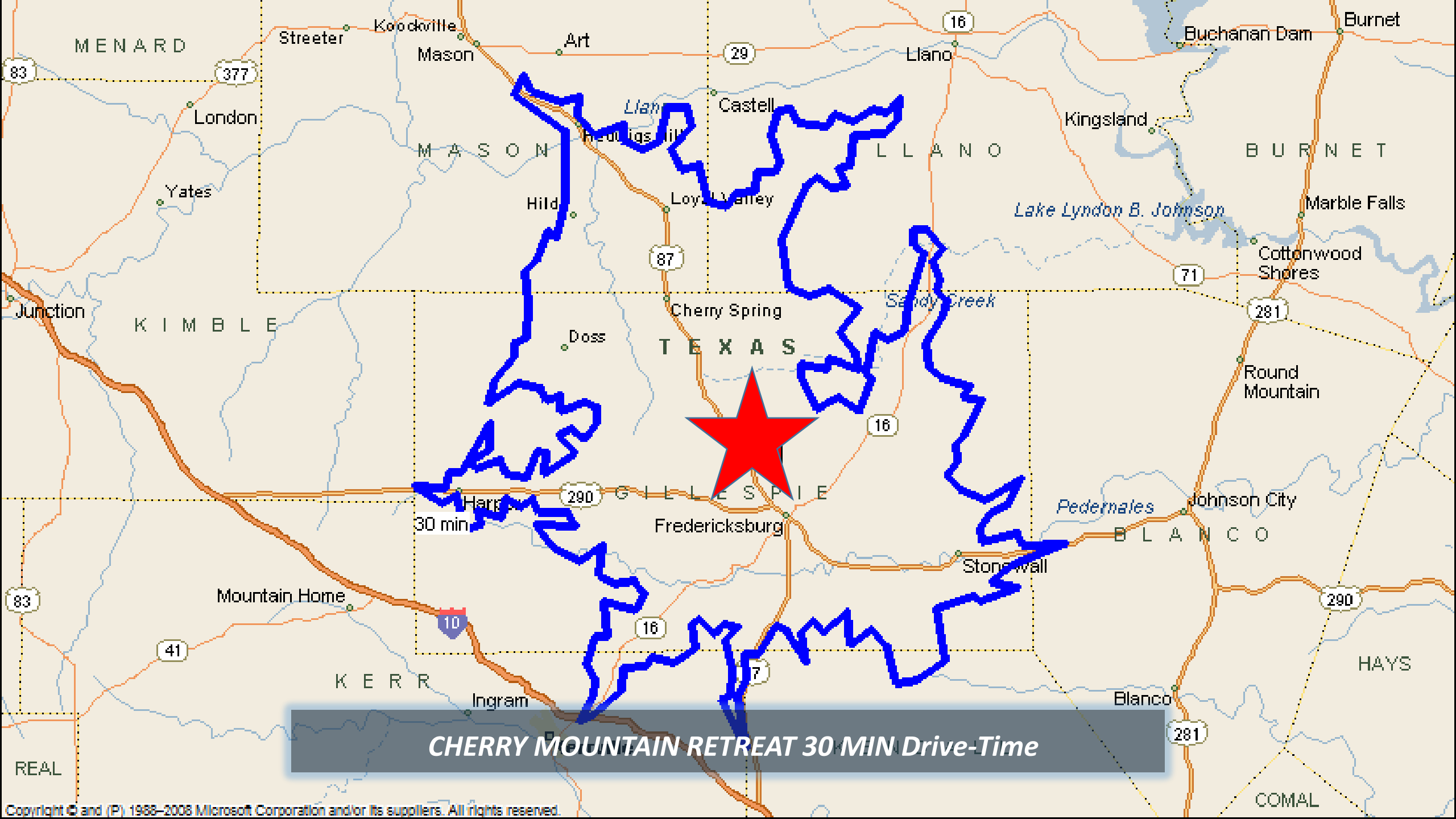


**CHERRY MOUNTAIN RETREAT 37 MI to Mason**

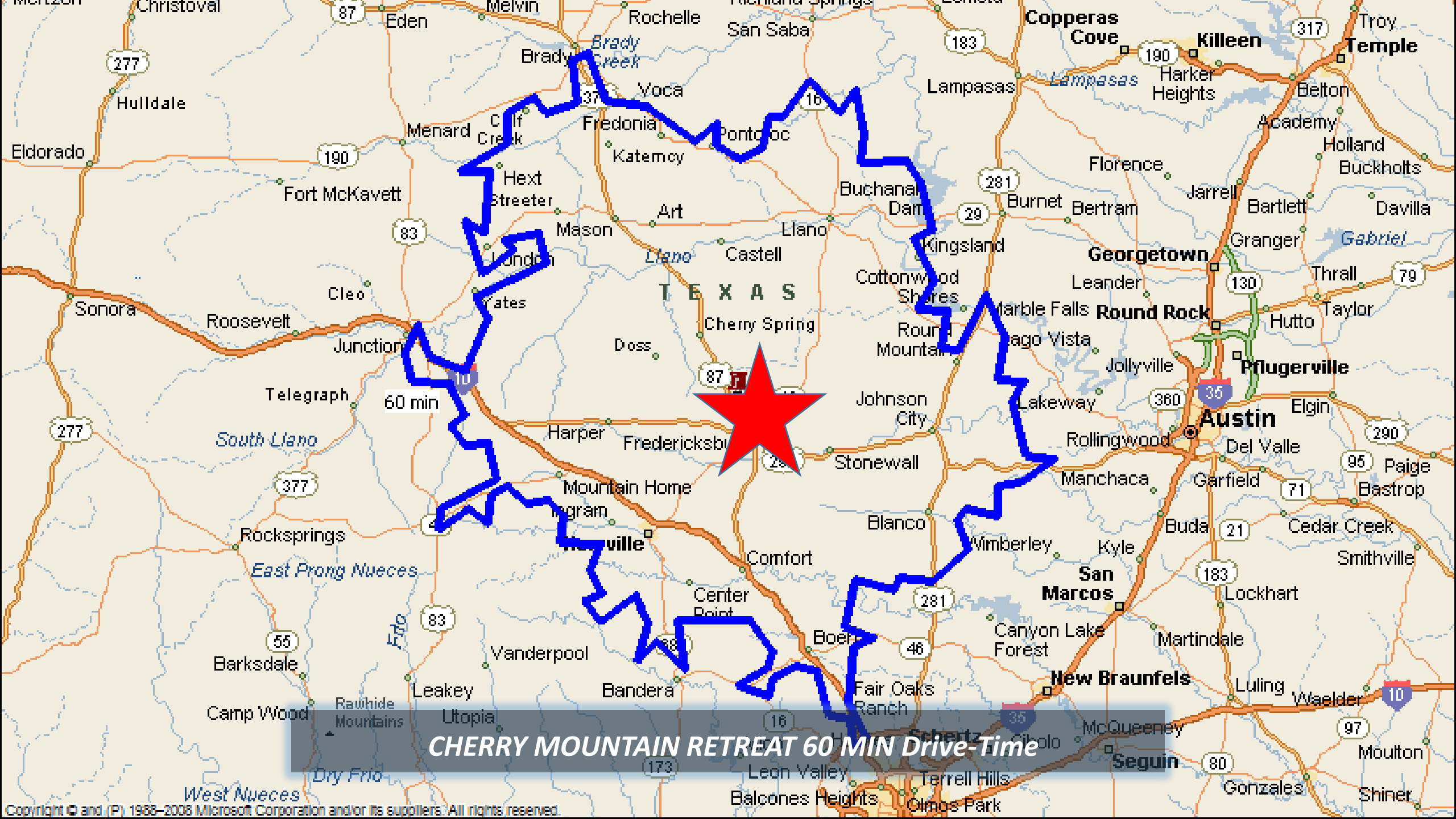


**CHERRY MOUNTAIN RETREAT 10, 20, 30 MI Radii**

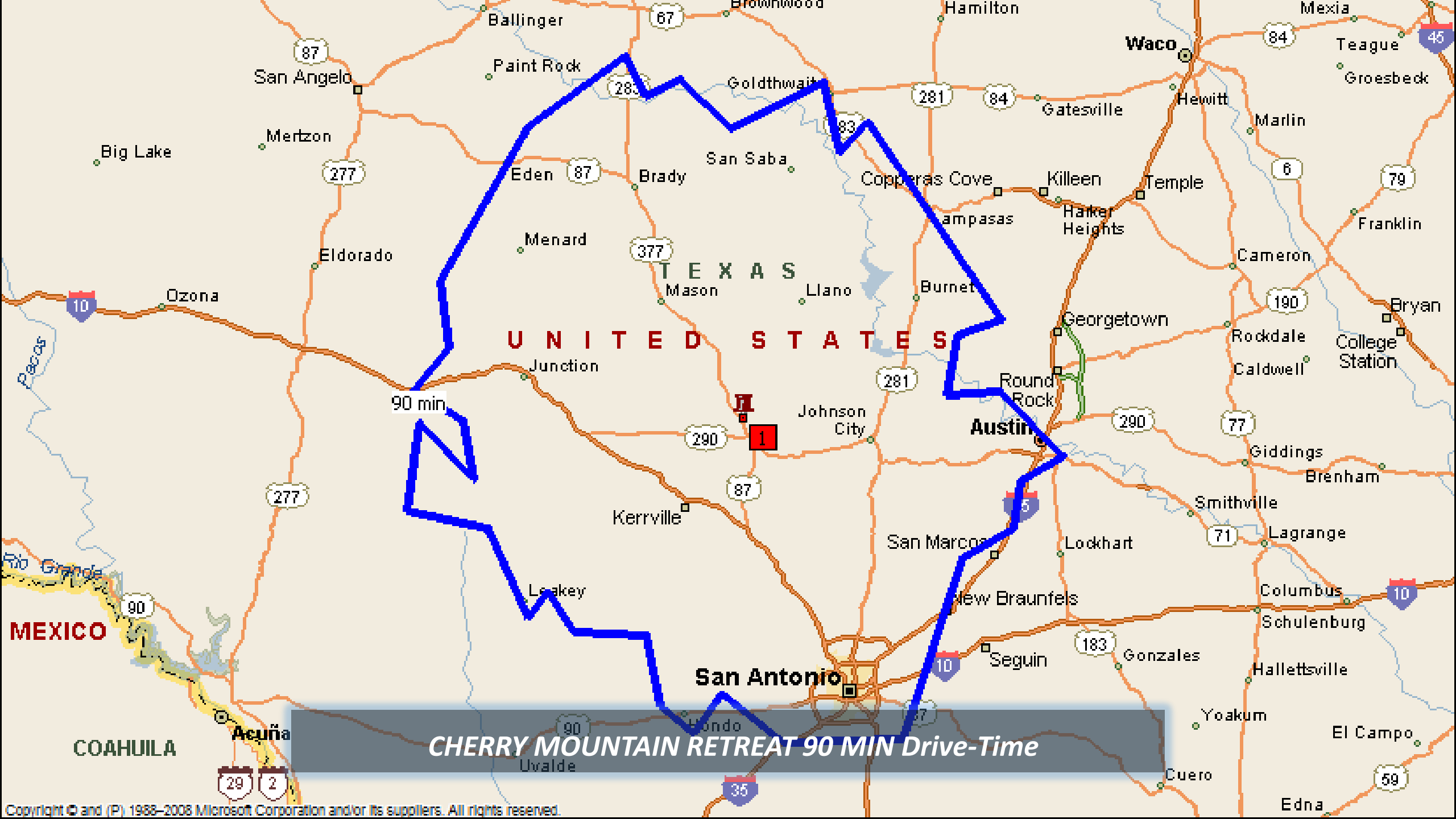




**CHERRY MOUNTAIN RETREAT 30 MIN Drive-Time**



**CHERRY MOUNTAIN RETREAT 60 MIN Drive-Time**



**CHERRY MOUNTAIN RETREAT 90 MIN Drive-Time**



**CHERRY MOUNTAIN RETREAT Texas Map**