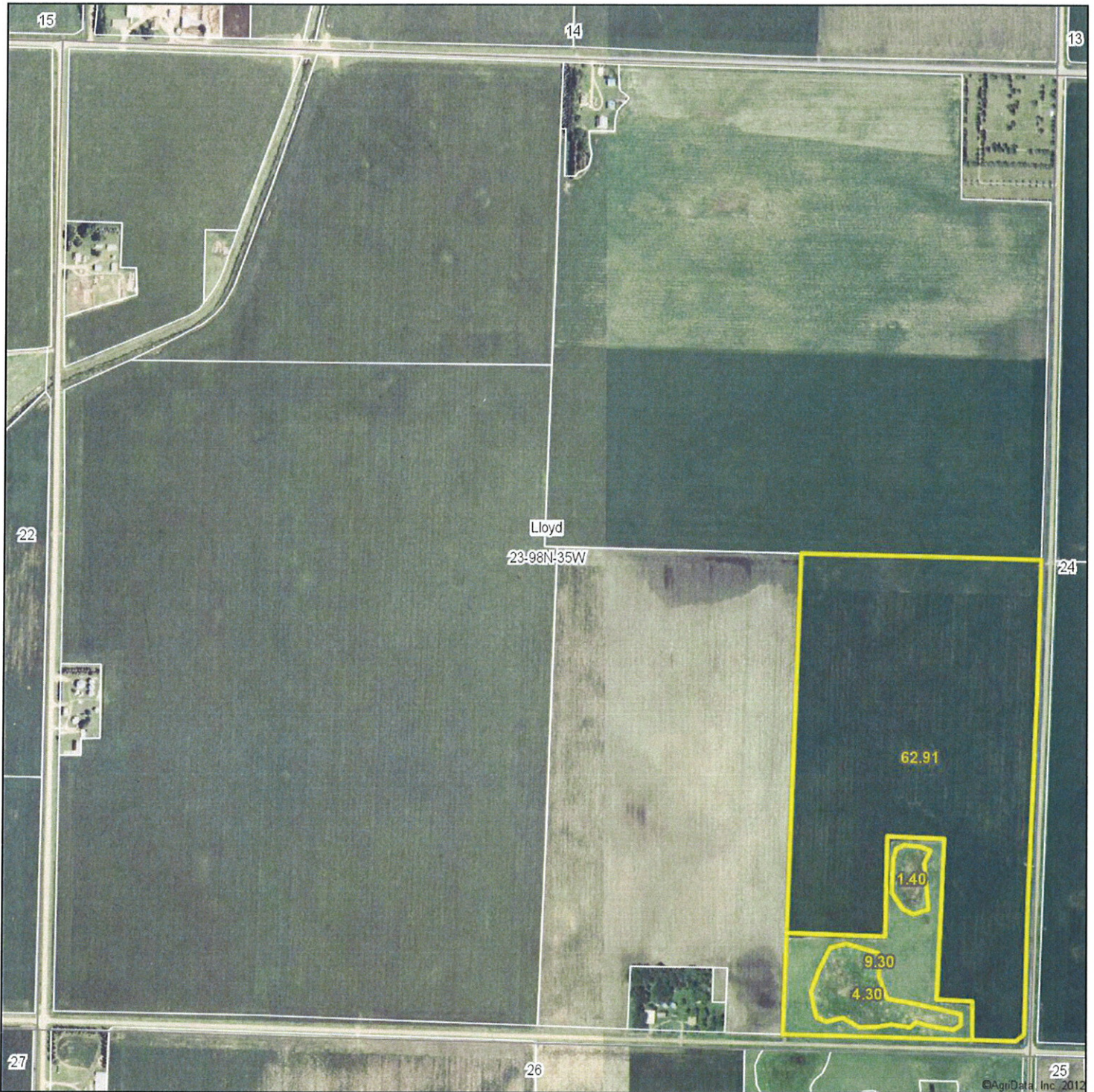


Aerial Map



MIDWEST LAND
712-262-3110 MANAGEMENT

Maps provided by:



©AgriData, Inc. 2012
www.AgriDataInc.com

23-98N-35W
Dickinson County
Iowa

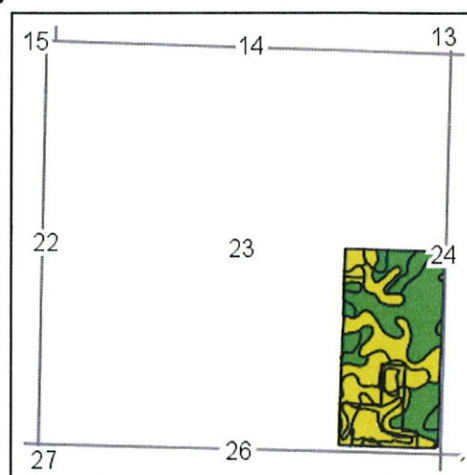
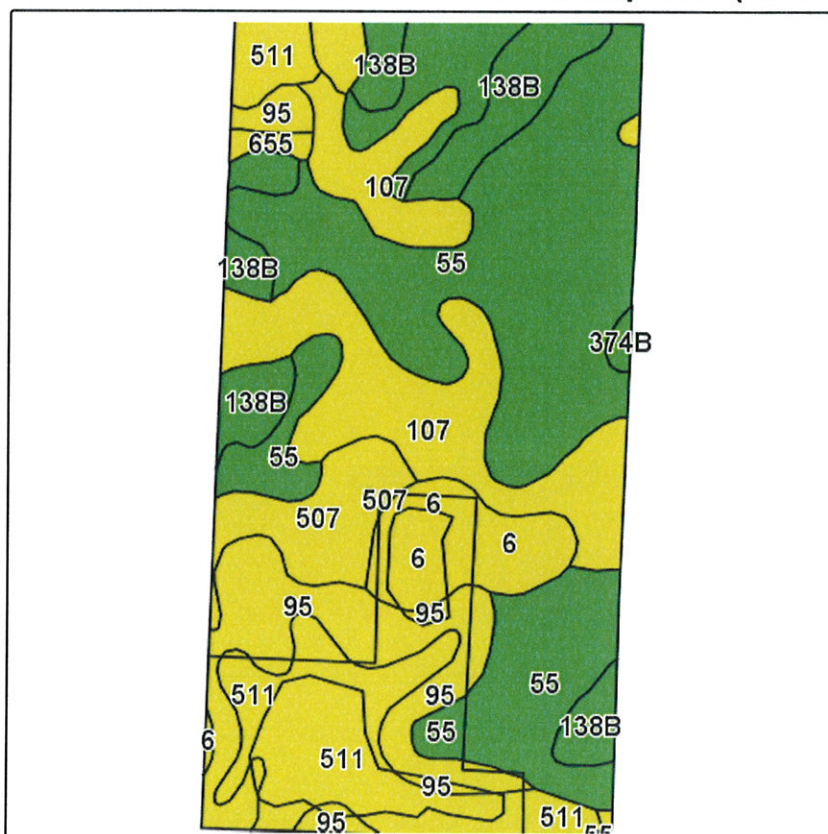
map center: 43° 17' 28.64, 94° 56' 37.82
scale: 8872



11/27/2012

Field borders provided by Farm Service Agency as of 5/21/2008. Aerial photography provided by Aerial Photography Field Office.

Soils Map-CSR(as of 1/21/12)



State: **Iowa**
 County: **Dickinson**
 Location: **23-98N-35W**
 Township: **Lloyd**
 Acres: **77.9**
 Date: **11/27/2012**

& REAL ESTATE, INC.
MIDWEST LAND
 712-262-3110 MANAGEMENT



Maps provided by:



Field borders provided by Farm Service Agency as of 5/21/2008.
 Soils data provided by USDA and NRCS.

Code	Soil Description	Acres	Percent of field	CSR Legend	Non-Irr Class	CSR*	Corn	Soybeans
55	Nicollet loam, 1 to 3 percent slopes	29.1	37.6%		I	73	183	59
107	Webster silty clay loam, 0 to 2 percent slopes	12.9	16.5%		IIw	70	179	57
511	Blue Earth mucky silt loam, 0 to 1 percent slopes	10.1	13.0%		IIIw	49	151	48
95	Harps loam, 0 to 2 percent slopes	8.8	11.3%		IIw	57	162	52
138B	Clarion loam, 2 to 5 percent slopes	7.1	9.1%		Ile	73	183	59
6	Okoboji silty clay loam, 0 to 1 percent slopes	4.5	5.7%		IIIw	43	143	46
507	Canisteo silty clay loam, 0 to 2 percent slopes	3.8	4.8%		IIw	71	180	58
655	Crippin loam, 1 to 3 percent slopes	1.3	1.6%		I	71	181	58
374B	Okabena silty clay loam, 1 to 5 percent slopes	0.3	0.3%		I	73	184	59
Weighted Average						65.7	173.2	55.6

Note: ALL soils information on this page is dated 1/21/2012

*CSR ratings will be available for a limited time to aid in the transition to CSR2.