

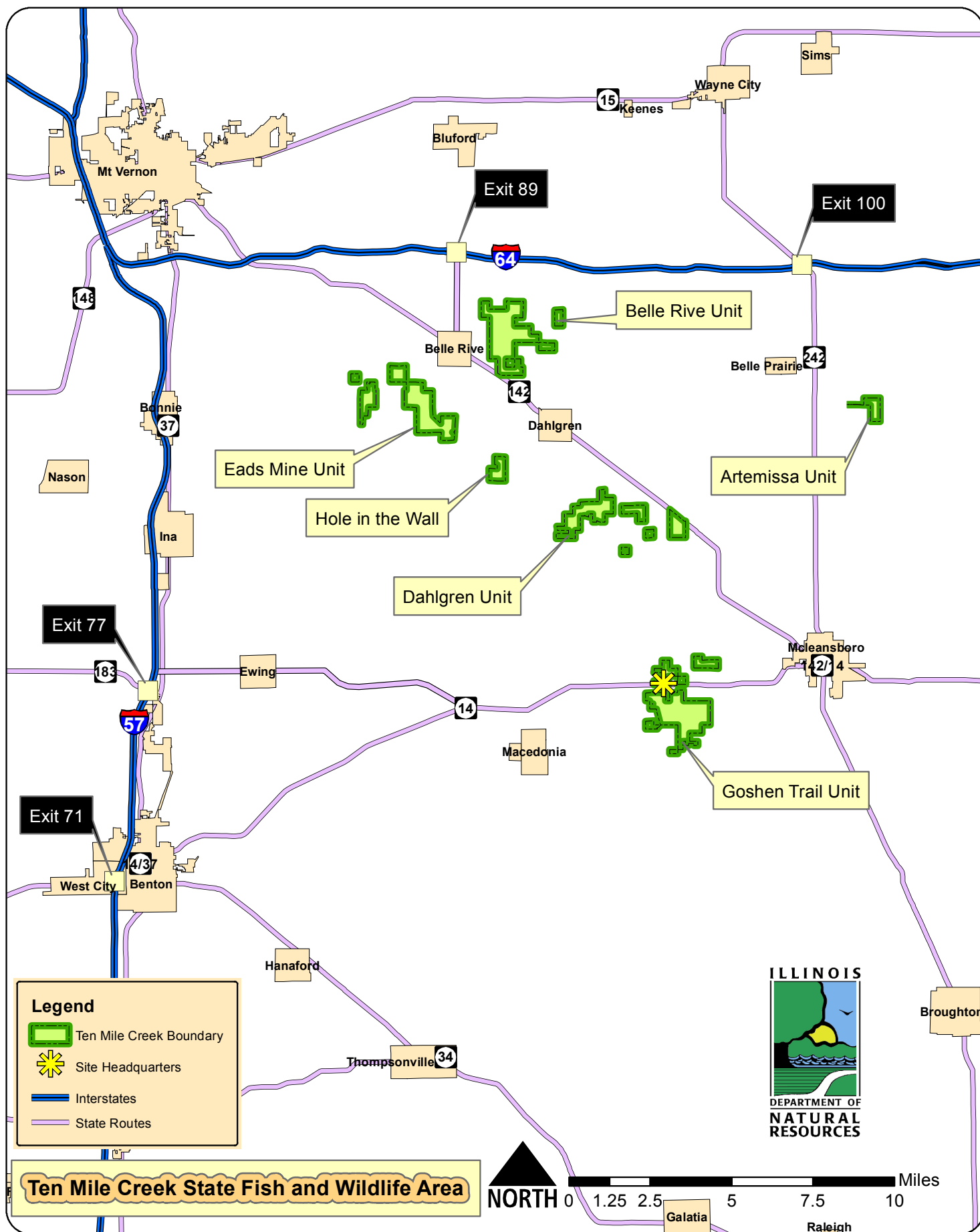
Ten Mile Creek State Fish & Wildlife Area

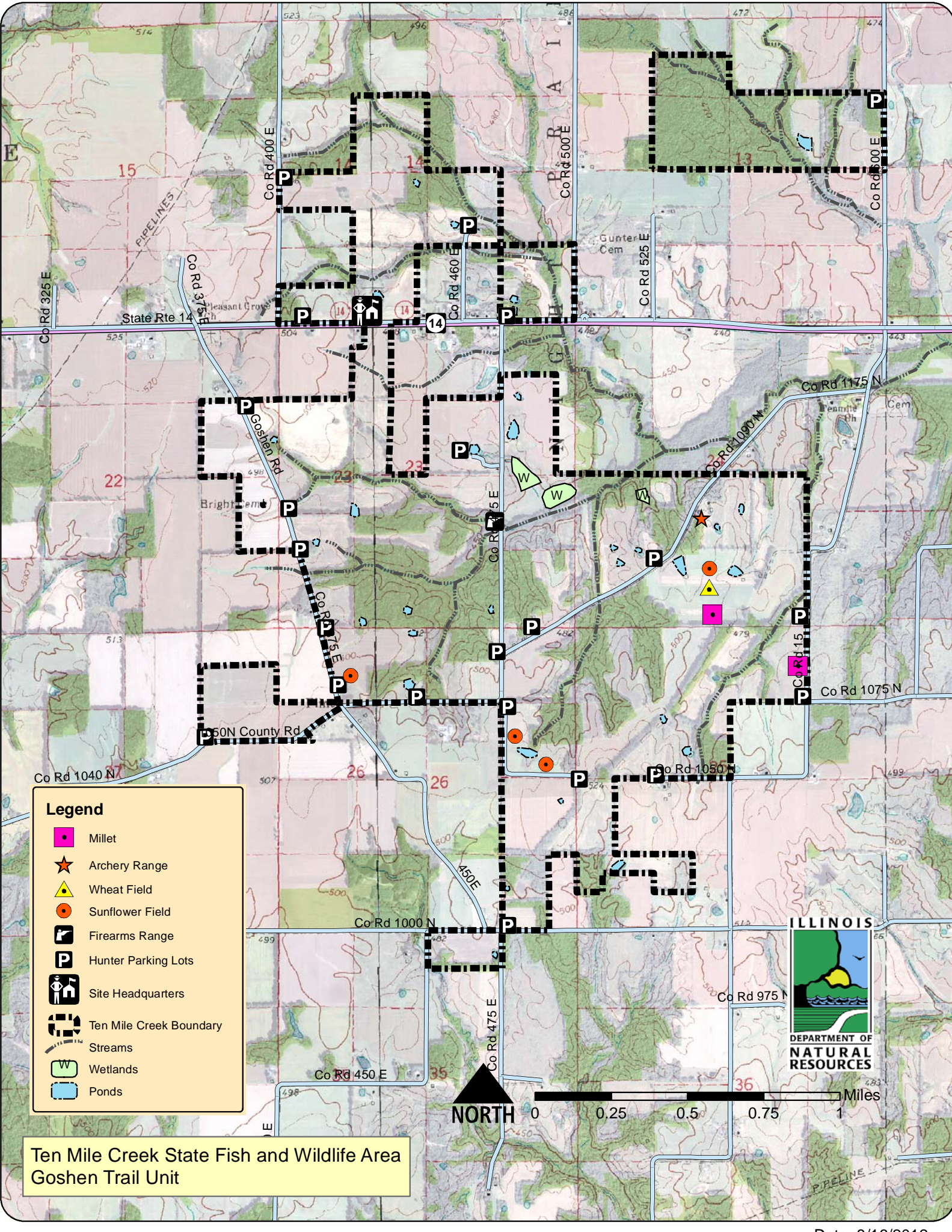
R.R. # 1 Box 179 McLeansboro , IL 62859

Phone # 618-643-2862

SITE SPECIFIC HUNTING RULES and REGULATIONS

1. **Return harvest online (www.dnr.illinois.gov) by **FEBRUARY 15, 2013**** regardless of whether you hunted or not. Failure to do so will void your hunting privileges at TMCFWA for the following year. The harvest permit is to be displayed on the vehicles dash when hunting. Snow goose hunters may wait until the end of the snow goose season to return their harvest report.
2. For each hunting trip, record the harvest number for the species hunted. Record a "0" for the species hunted if no harvest occurred during your hunting trip.
3. **Every** hunter must obtain a permit. **No guests** allowed on someone else's permit.
4. Valid weapons for use on TMCFWA include: shotguns, bow and arrow, muzzle loading rifles, and handguns. Rimfire firearms with calibers of .22 or smaller and muzzle loading rifles are permitted for squirrel hunting. Rimfire firearms with a caliber of .22 or smaller are permitted for harvesting fur-bearers 24 hours a day. Handguns of legal caliber are permitted during regular firearm and late winter antlerless only deer seasons.
5. The construction or use of permanent tree stands is prohibited. The use of nails, screws, and screw type steps is strictly forbidden on any tree. Portable tree stands or ground blinds are valid for use on TMCFWA. Stands and blinds can be left overnight unattended from the period of September 15 through January 31 inclusive. All stands and blinds must have the hunter's name and address clearly marked on it if left on the site overnight. **ONLY ONE** stand or ground blind per hunter is allowed.
6. Areas posted as **Goose Refuge** are closed to all access during the regular fall Canada goose hunting season.
7. A solid blaze orange hat/cap and an upper outer body garment is required for all upland game hunting during rabbit & quail seasons.
8. **Dove hunting** is permitted with the following lead shot sizes: 7 1/2, 8, and 9. Dove hunting is permitted with steel shot sizes of #6 or smaller. Steel or other approved non-toxic shot is required for all areas posted as Goose Refuge. **Shooting hours are sunrise-11:30 am Sept. 1st thru 5th. Statewide regulations thereafter.**
9. It is unlawful to possess or consume any alcoholic beverage while or prior to hunting on this site.
10. All vehicles must remain on designated roadways and parking lots. Use of grass/dirt field roads is prohibited. **All A.T.V. use is strictly prohibited** unless a special permit for handicap access is issued by the Site Superintendent.
11. The Belle Rive unit is designated as a Quality Deer Management Area. Only antlerless deer or deer with a minimum of 4 points on one side maybe harvested in the Quality Management Area.
12. You must receive a turkey permit specifically for TMCFWA and the online windshield card to hunt this site.
13. Hunters may enter areas designated as Goose Refuge at **12:01 a.m. February 1st** in years when a conservation order light goose season has been established.
14. All statewide regulations apply unless otherwise specified.



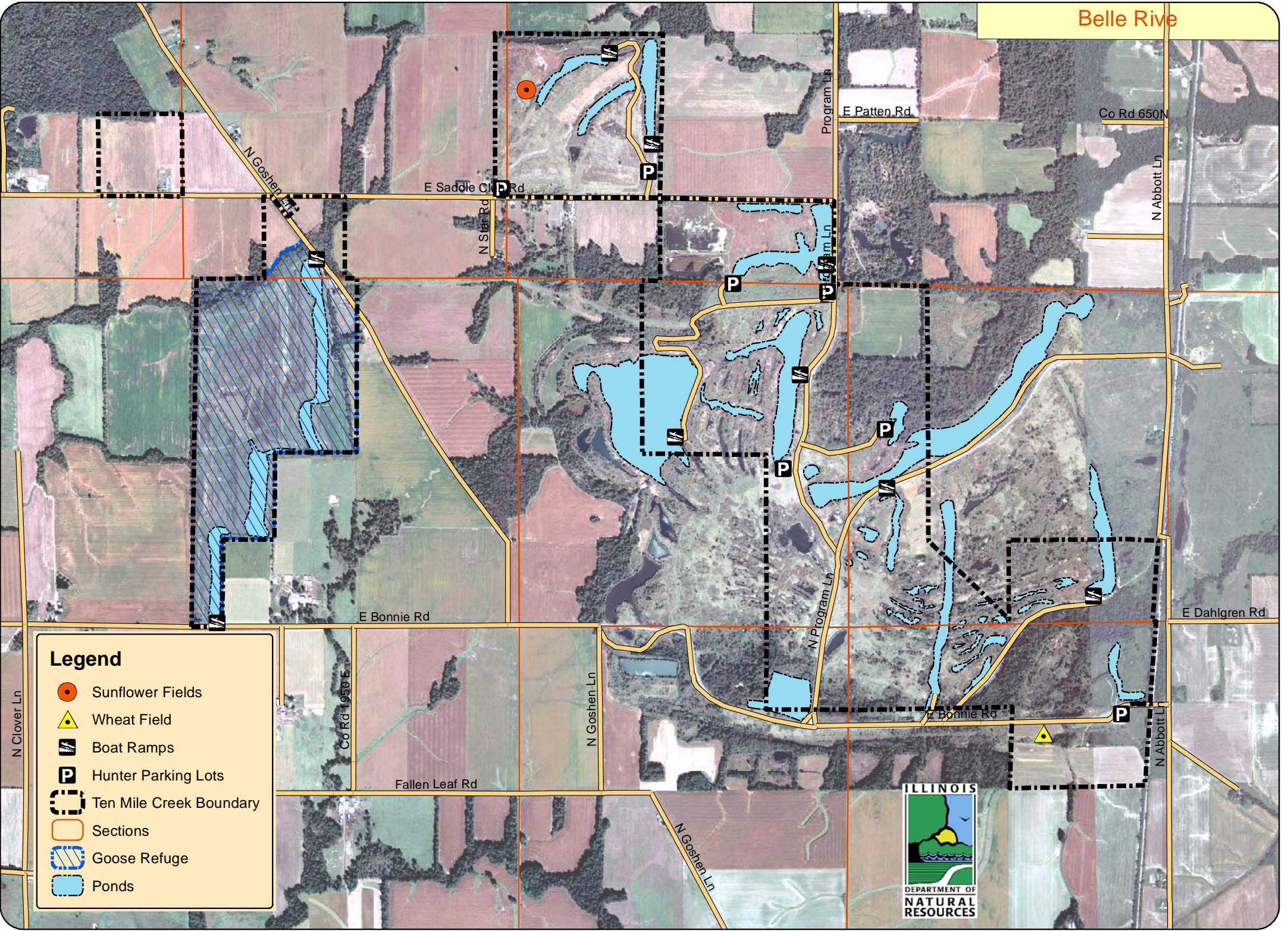


Legend









- Millet
- Archery Range
- Wheat Field
- Sunflower Field
- Firearms Range
- Hunter Parking Lots
- Site Headquarters
- Ten Mile Creek Boundary
- Streams
- Wetlands
- Ponds

Ten Mile Creek State Fish and Wildlife Area
Goshen Trail Unit





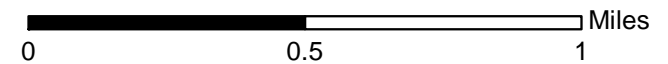
Legend

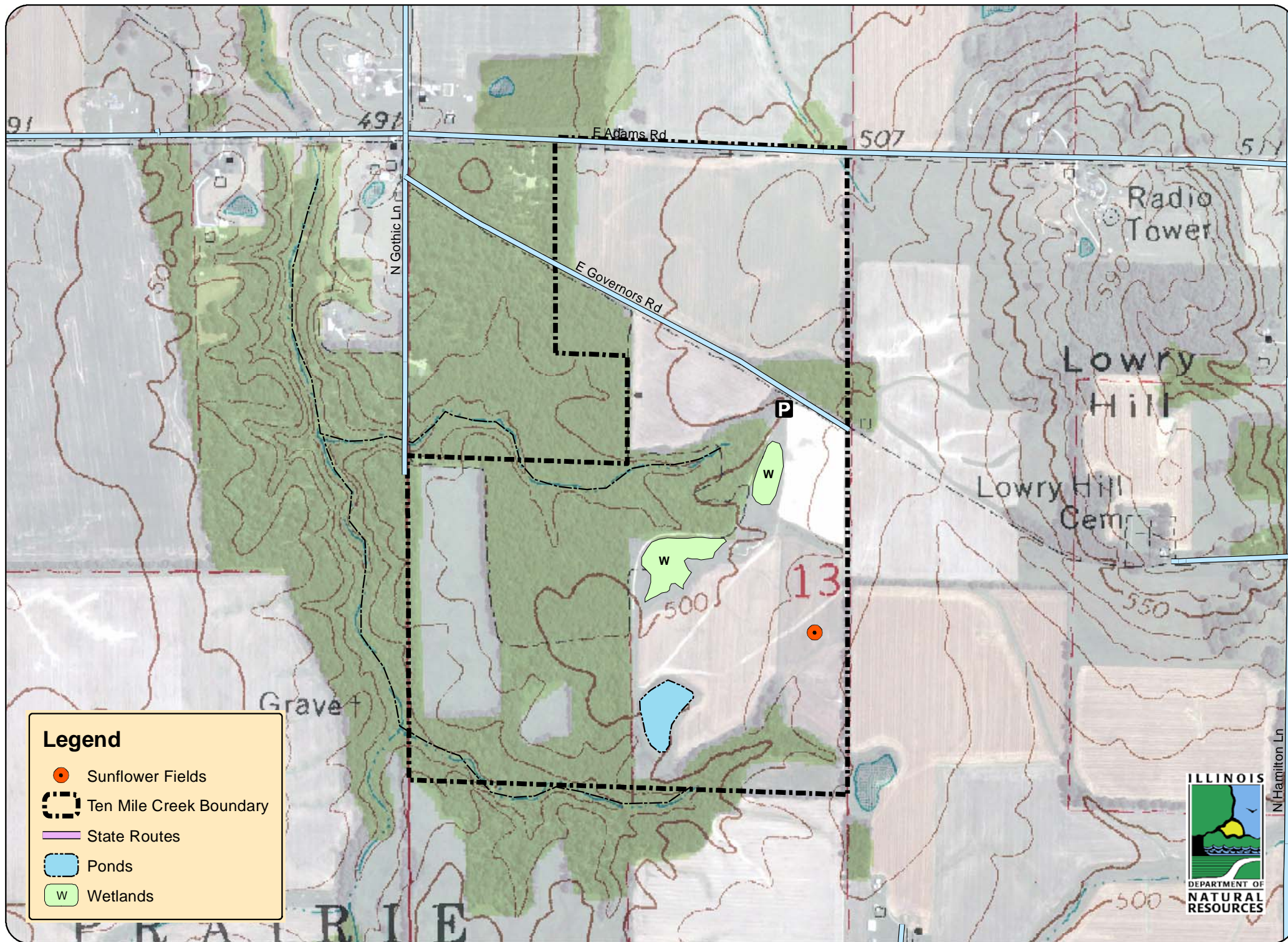
-  Sunflower Fields
-  Wheat Field
-  Boat Ramps
-  Hunter Parking Lots
-  Ten Mile Creek Boundary
-  Sections
-  Goose Refuge
-  Ponds



Ten Mile Creek State Fish and Wildlife Area
Eads Mine Unit

Date: 8/16/2012





Legend

-  Sunflower Fields
-  Ten Mile Creek Boundary
-  State Routes
-  Ponds
-  Wetlands

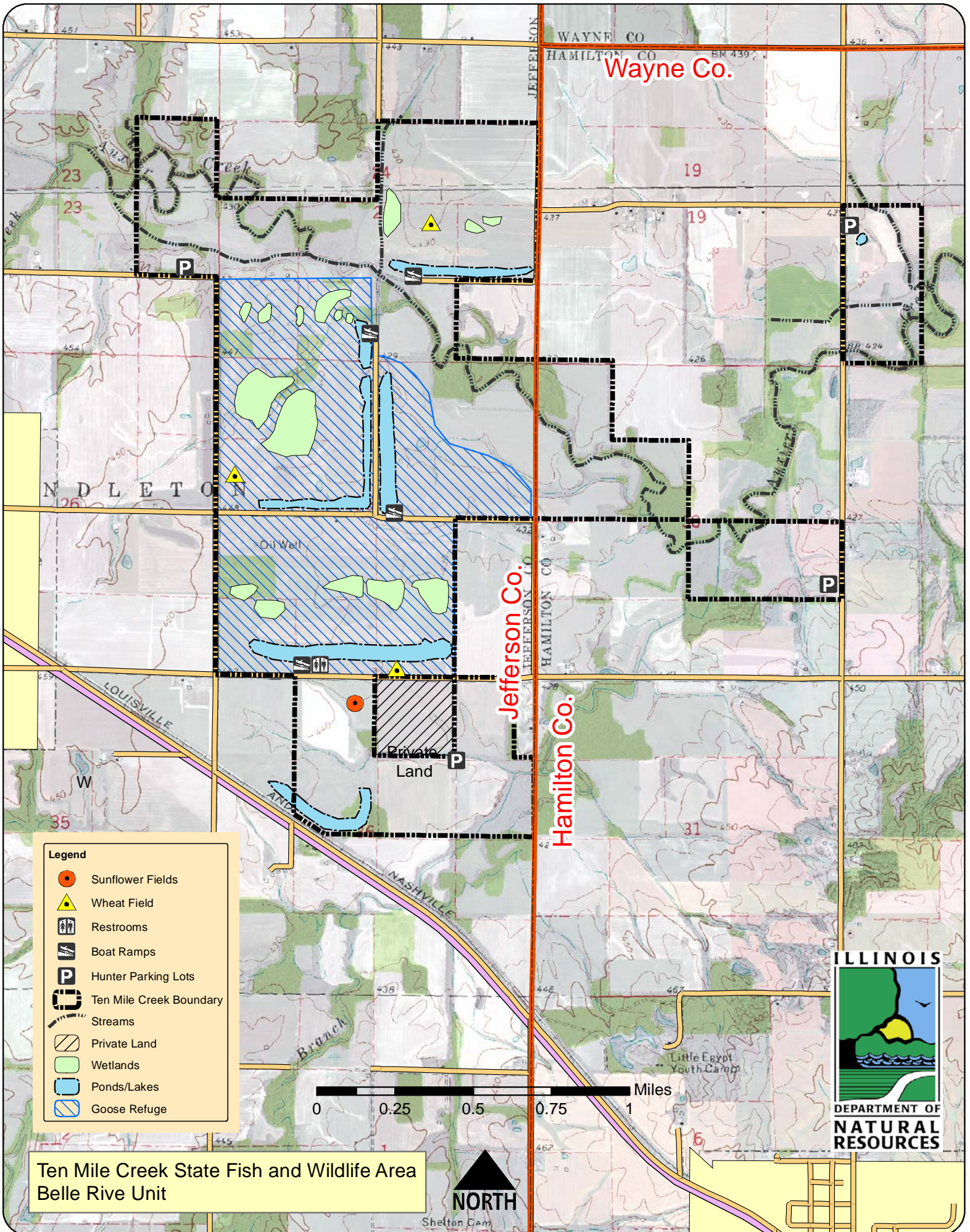


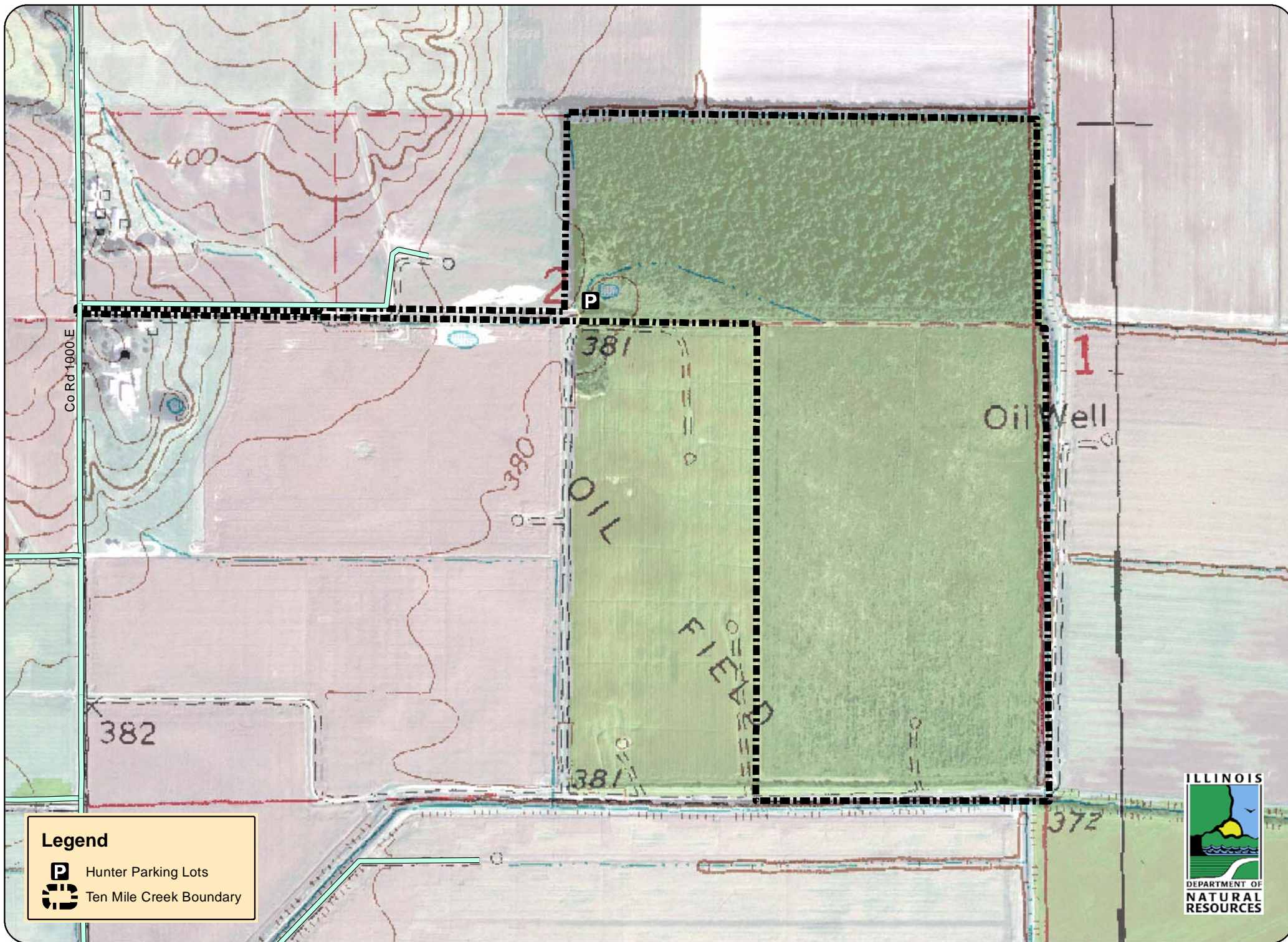
Ten Mile Creek State Fish and Wildlife Area
Hole in the Wall - Eads Mine Unit

Date: 8/16/2012



0 0.25 0.5 Miles







Legend

-  Hunter Parking Lots
-  Ten Mile Creek Boundary



Ten Mile Creek State Fish and Wildlife Area
Artemissa Unit

Date: 8/16/2012

0 0.25 0.5 Miles