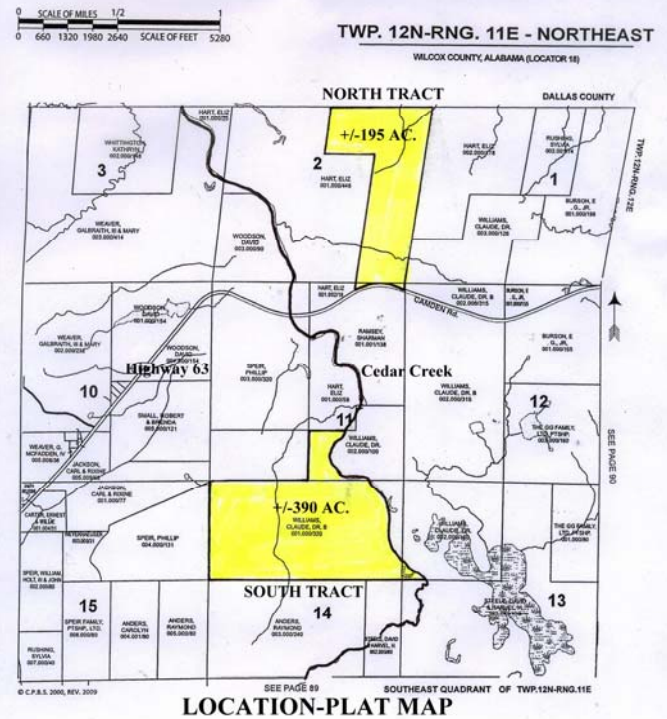




GREAT SOUTHERN Land



#66-029 Cedar Creek South Tract +/-390 Acres Wilcox County Offered for \$760,750



www.GreatSouthernLand.com

This property is located east of the historic town of Furman in eastern Wilcox County on the south side of County Highway 63 as noted. It features very good timber, and is an excellent hunting tract. This **South Tract (+/390 acres)** lies approximately 3/4 mile south of the highway and is accessed through adjoining landowners. It features over 3/4 mile frontage on beautiful Cedar Creek. All mineral rights owned will be transferred. This tract and the **North +/-195 acres** can be purchased together if desired. Please call **Don Donald at the Camden Office at 1-866-766-0759** or **Edgar Reeves at 334-872-0491, ext. 102** to make an appointment to see and for a combined tract price. Timber volume estimates based on an updated 2008 estate cruise are: Pine Pulpwood - 237 tons, Pine Chip-N-Saw - 1,050 tons, Pine Sawtimber - 1,782 tons, Hardwood Pulpwood - 2,211 tons, Oak Sawtimber - 1,273 tons, Soft Sawtimber - 950 tons, Cedar - 435 tons. More maps and photographs are available on our web site.

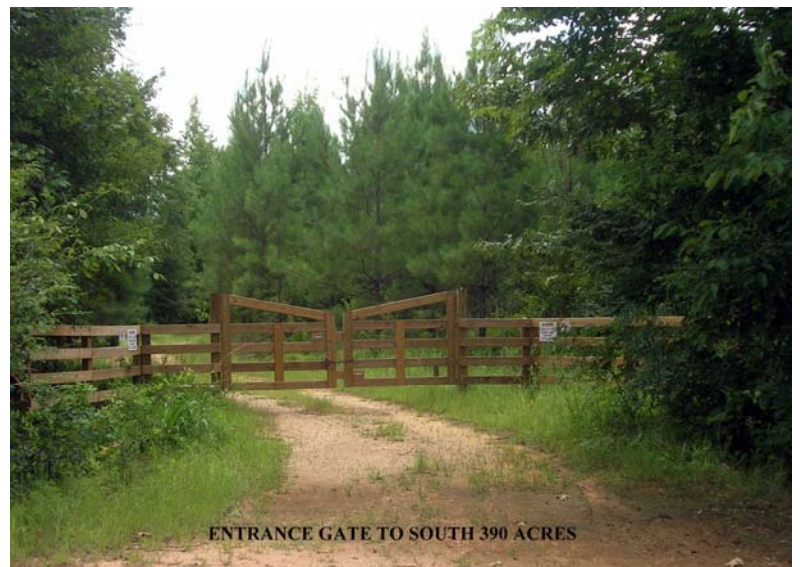


For a tour or more information call:

Don Donald, ALC, Broker
1-866-788-0759
334-419-2874 cell
grsouth@frontiernet.net

Edgar Reeves, Agent
334-872-0491, Ext. 102

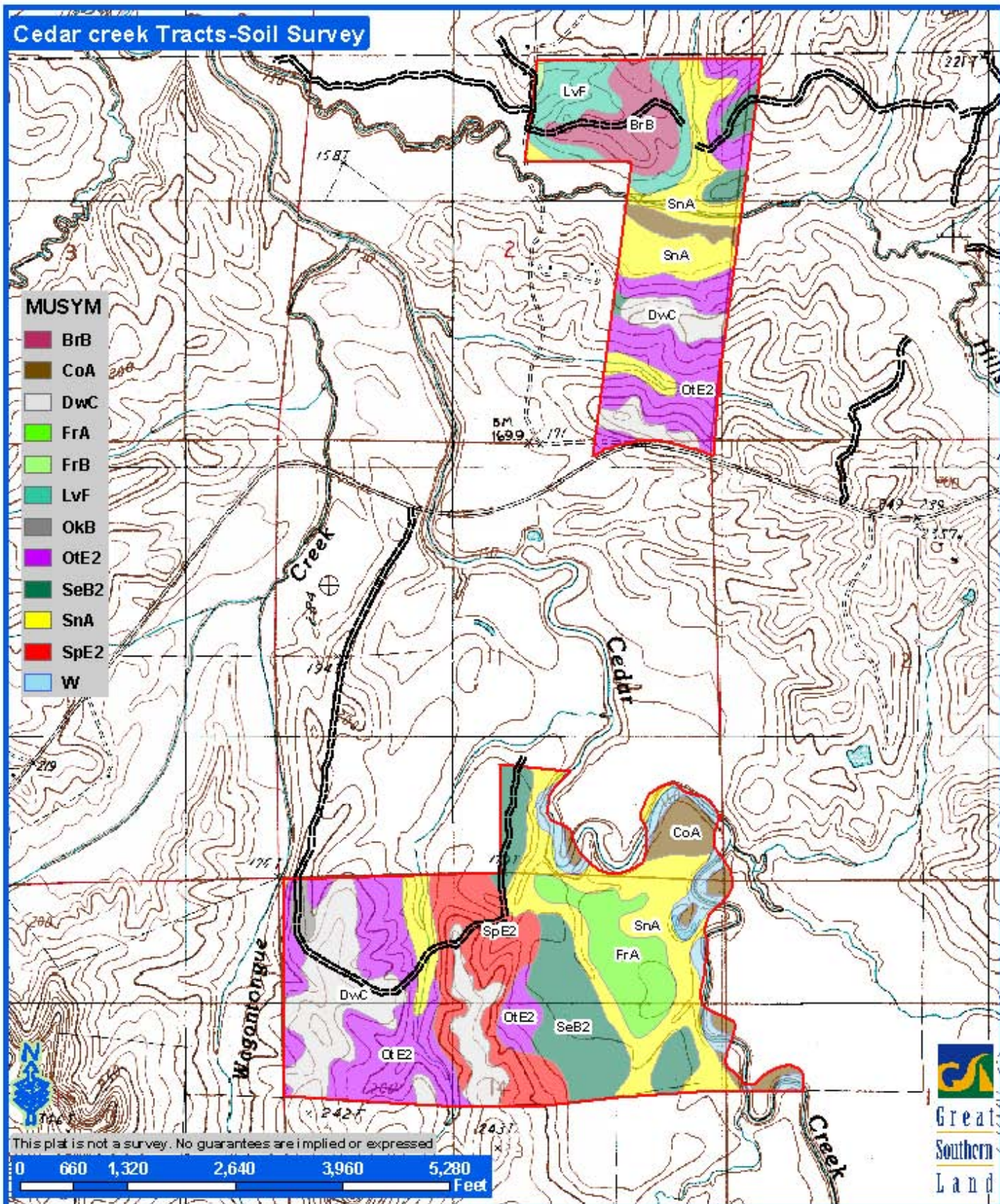
Great
Southern
Land



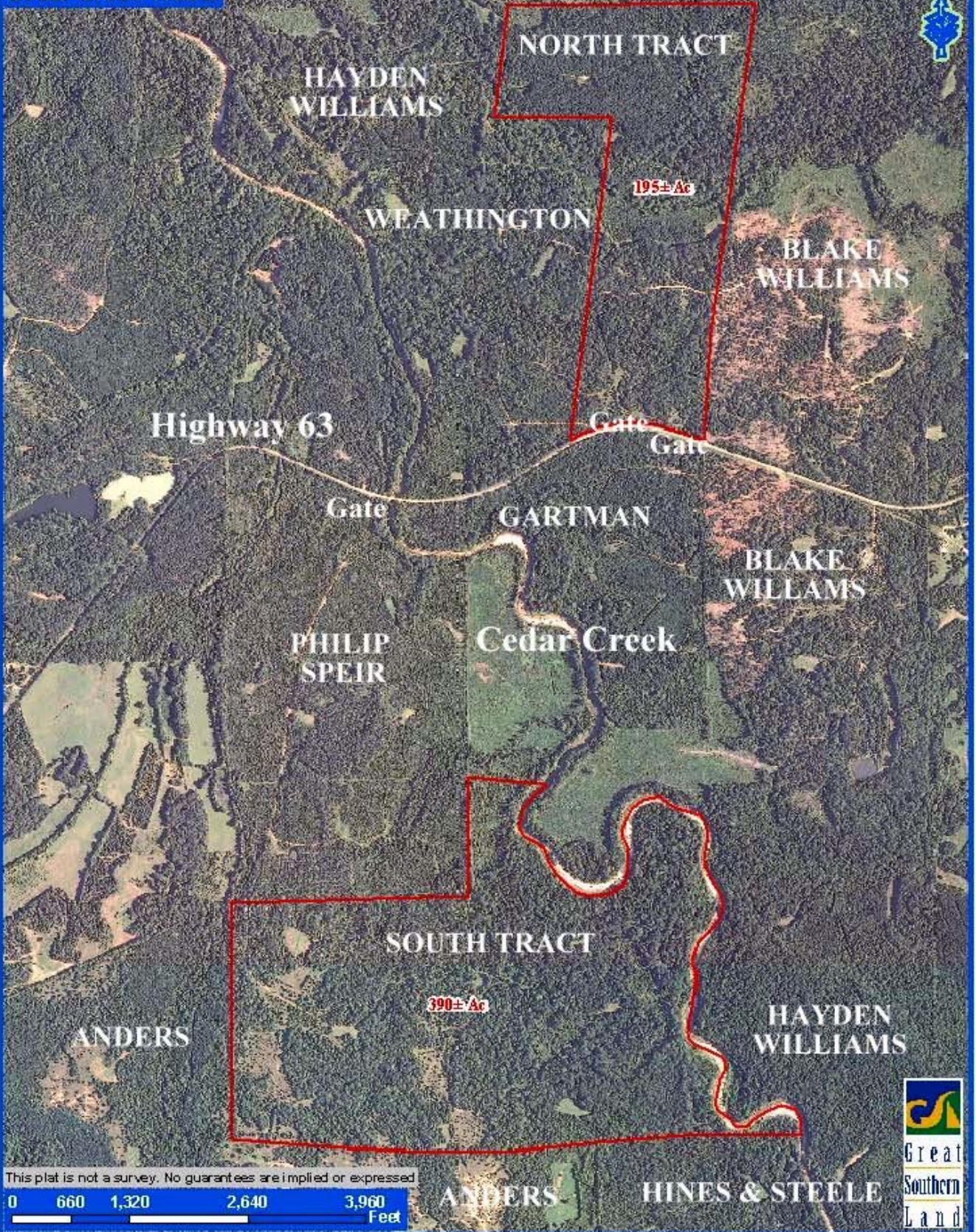
Cedar creek Tracts-Soil Survey

MUSYM

- BrB
- CoA
- DwC
- FrA
- FrB
- LvF
- OkB
- OtE2
- SeB2
- SnA
- SpE2
- W



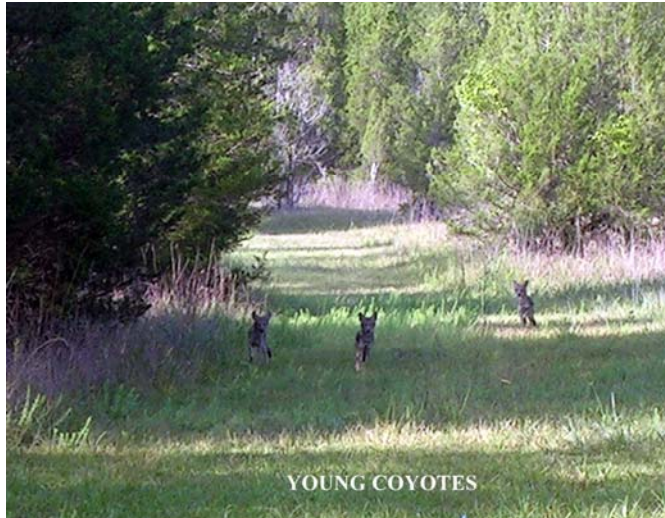
Cedar Creek Tracts



This plat is not a survey. No guarantees are implied or expressed

0 660 1,320 2,640 3,960 Feet





YOUNG COYOTES



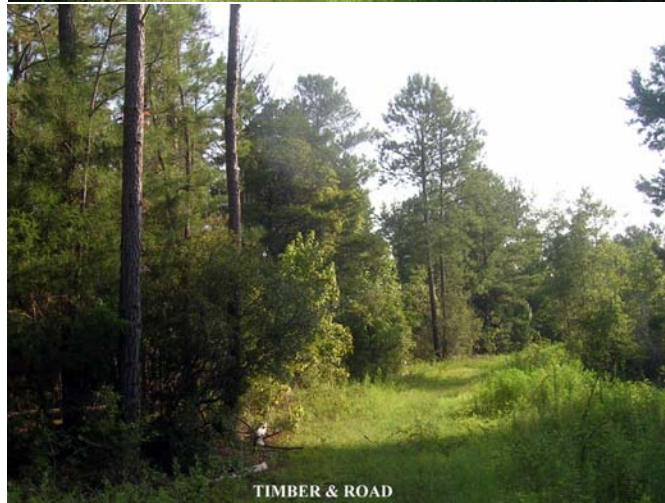
SOUTH AREA GAME PLOT



LARGE TIMBER



SOUTHWEST CUTOVER



TIMBER & ROAD



SOUTH AREA GAME PLOT

TRACT PHOTOGRAPHS