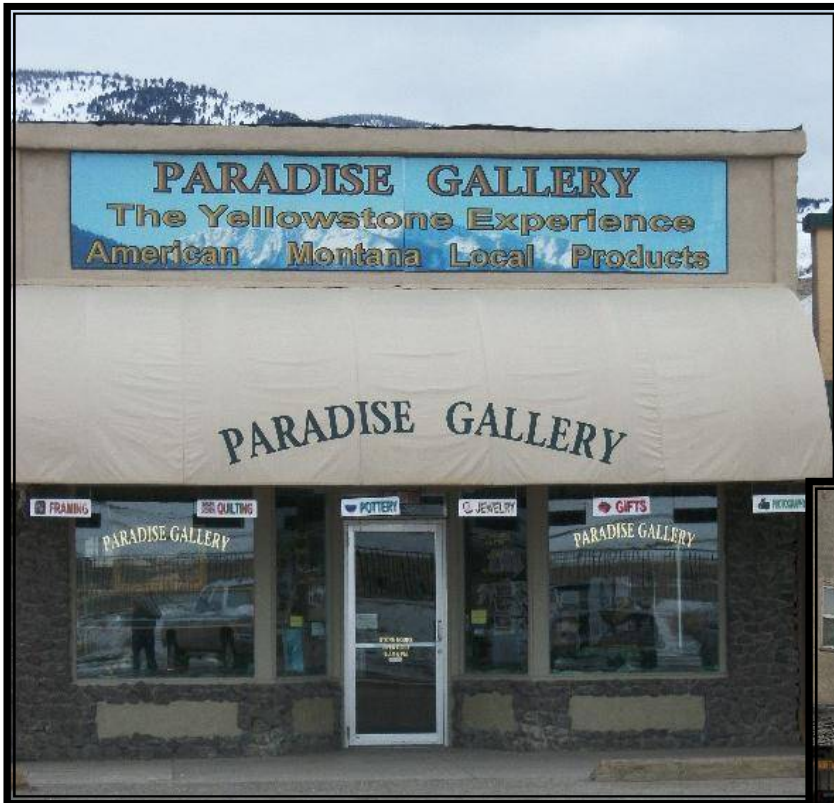


Sonny Todd Real Estate

301 West First, P.O. Box 788, Big Timber, MT 59011
(406) 932-6668 or (406) 932-1031 Fax: (406) 932-4838
info@sonnytoddrealestate.com ~ www.sonnytoddrealestate.com
Toll Free: (866) 932-1031



210 Park St.

Gardiner, Montana

\$225,000.



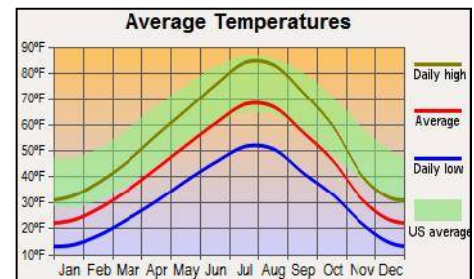
Prime retail real estate conveniently located across the street from Yellowstone National Park on the main through street in Gardiner, the North Entrance to Yellowstone National Park. Great business opportunities await you in this highly recreational area. The town is nestled in the breathtaking Paradise Valley with the Yellowstone River running through it. The abundant wildlife such as elk, bison, antelope & deer are local residents of the town, seen wandering and grazing downtown Gardiner.



Justin Todd
(406)223-5263

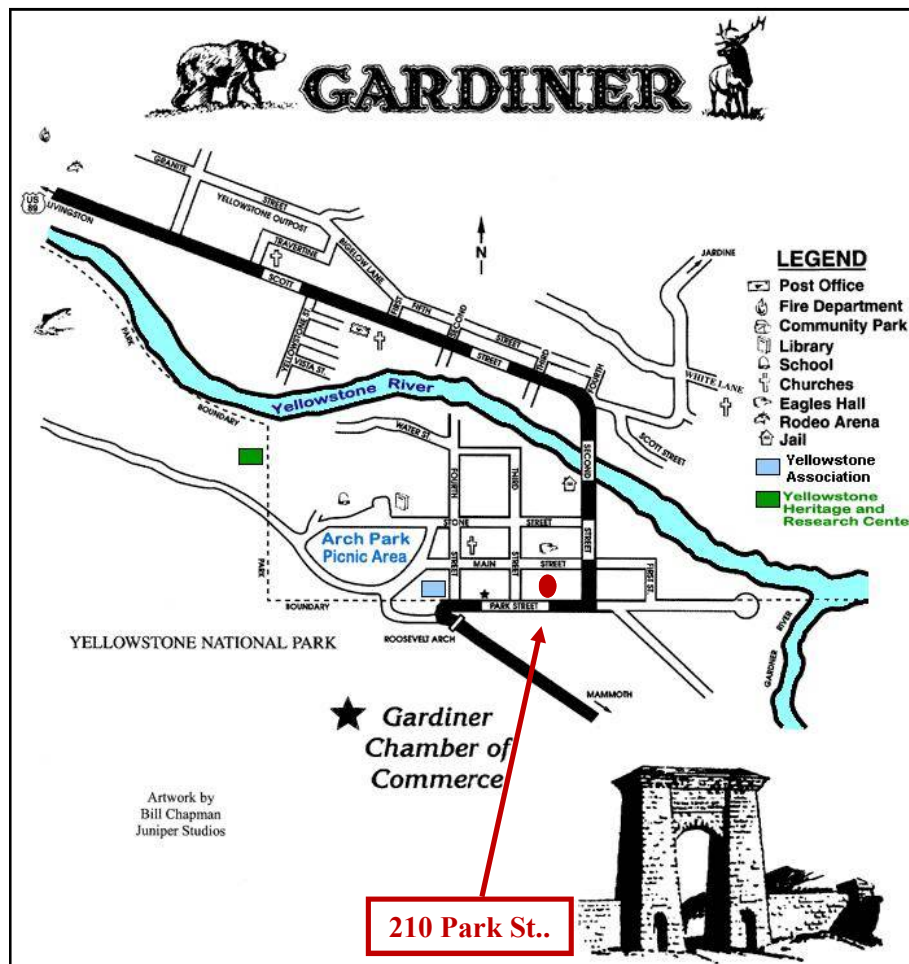
23' X 90' Retail Shop
w/partial basement

Taxes: \$2,777.



Notice: The data contained herein was obtained from the owner and other sources deemed reliable, but is not guaranteed by agents. Prospective purchasers are advised to examine the facts to their own satisfaction. This offering is subject to change of price and terms, lease, prior sale or withdrawal from the market, without notice.

Gardiner has much to offer as a small, quaint Montana town.



Gardiner offers a small airport, art galleries, churches, grocery store, motels, restaurants, shops, and related visitor services. Campgrounds offer overnight services with all hook-ups. Gardiner is sandwiched between the Absaroka-Beartooth Wilderness to the North and the world's first and most famous national park, Yellowstone National Park, to the South. Seasonal activities with a focus on the outdoors abound and offer a great variety. In the summer and fall plan on fishing, hunting, pack trips, white water rafting and kayaking. In the winter, Yellowstone Country is magically transformed under a blanket of snow where cross-country skiing, snowshoeing, snowmobiling and wildlife viewing are some of the most popular activities.

