

New Listing!!!

MLS # 386022

15± acres on Duck Pond

MOSS BLUFF, MARION COUNTY, FLORIDA



15± acres for only \$49,995
(\$3,333/ac)

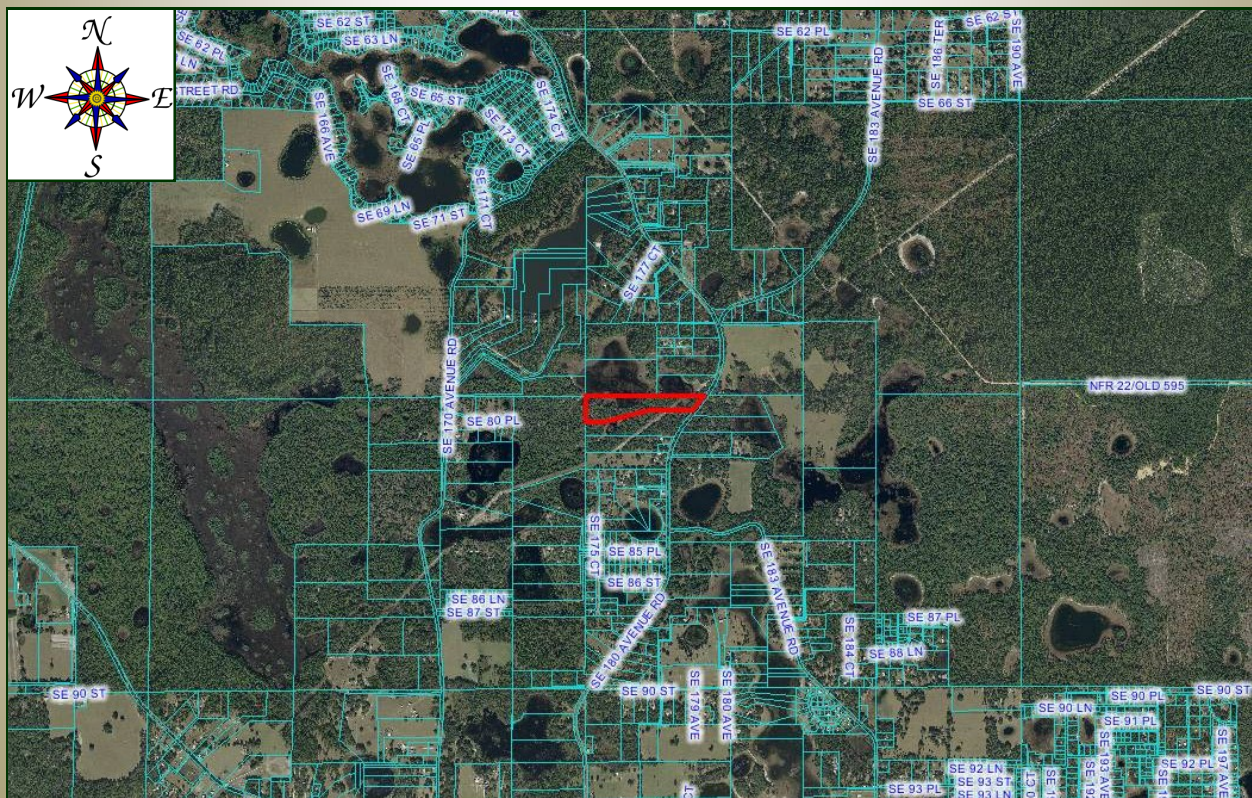
- Located in Gorgeous Southeastern Marion County & only minutes from town!
- 15± acres of Beautiful Oaks, Winding roads, Gorgeous Views, Ponds & much more!
- Marion County Tax Parcel ID #39547-001-00 (2012 Real Estate Taxes = \$659.65)
 - Close to the Ocala National Forest!
 - Paved Road Frontage on SE 180th Ave. Rd.
 - Owner Financing Available...
- \$9,999 Down (20%), 6% Interest, 10 year amortization, 5 year balloon, Pmts = \$444.04
- Tons of character and curb appeal - ABSOLUTELY GORGEOUS PIECE OF LAND!
- Call today so you don't miss out on this incredible opportunity!

www.mcbrideland.com

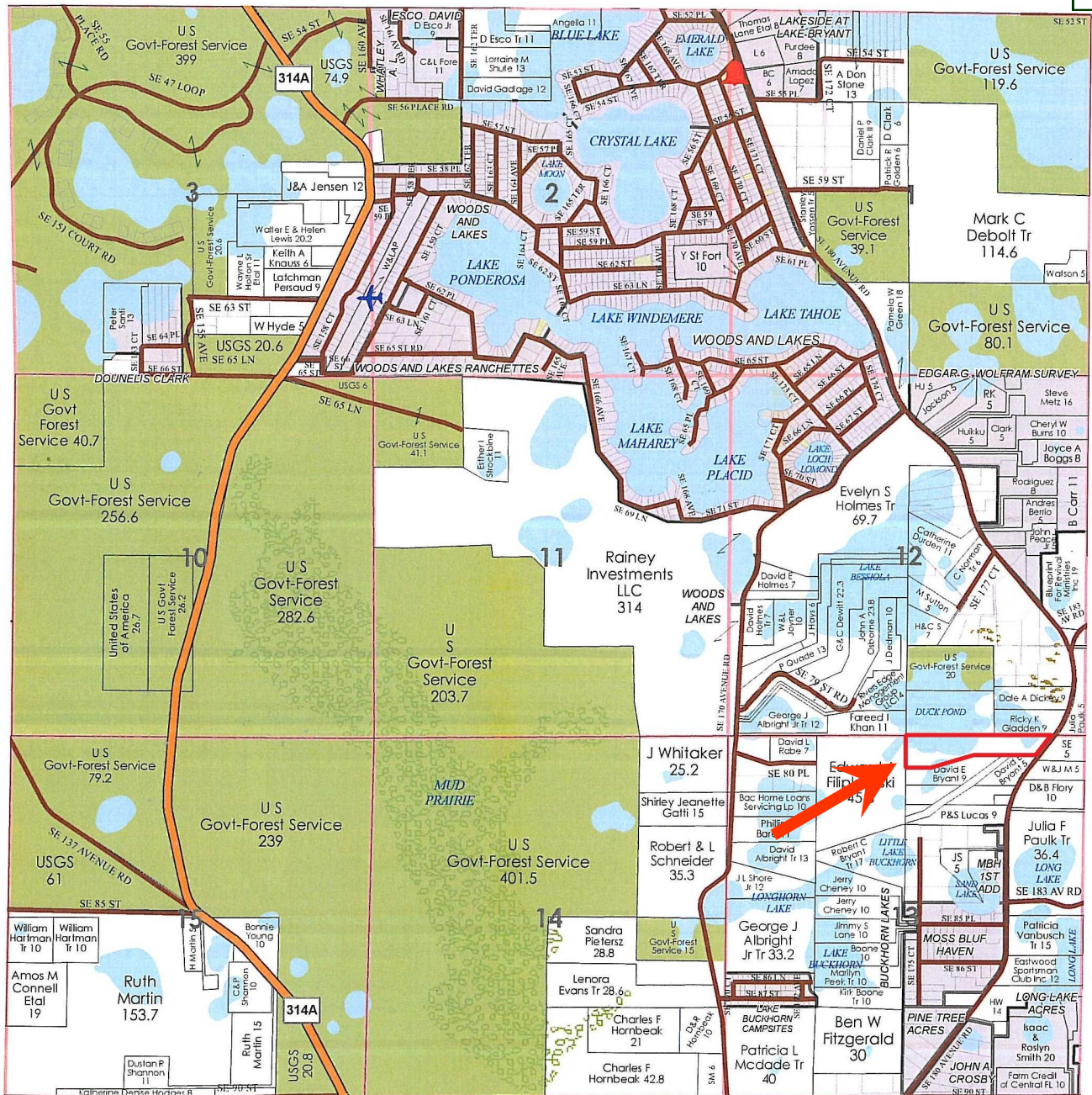


Phone: (352) 401-3755
Fax: (352) 401-3757
Mobile: (352) 362-5226

MOSS BLUFF, MARION COUNTY, FLORIDA



MOSS BLUFF, MARION COUNTY, FLORIDA

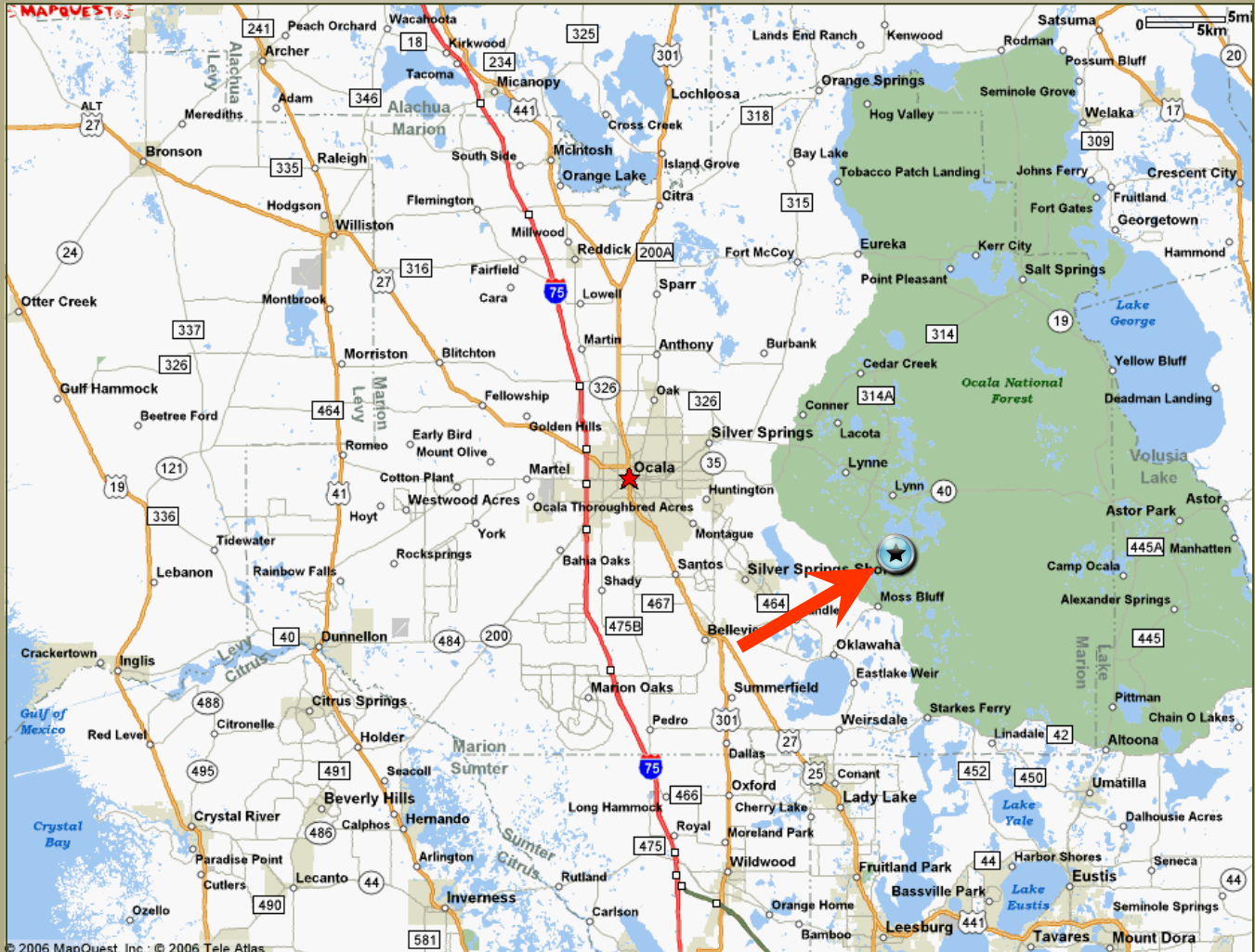


See T.16S. - R.25E. (N.W.) Page 162

See T.16S. - R.24E. (S.E.) Page 161

Directions

MOSS BLUFF, MARION COUNTY, FLORIDA



FROM OCALA:

Take SR 40 (aka Silver Springs Boulevard) East. Make a Right (heading South) on Hwy 314A in Lynn. Take 314A for approx. 3 ½ miles to SE 49th St. Rd. Make a Left on SE 49th Street Road (heading East). Property entrance located approx. 4 miles on your Right (just past SE 183rd Ave. Rd.). Gate is locked so call Nathan Garcia at McBride Land to make an appointment to view this incredible property!

Call Nathan Garcia at McBride Land to make an appointment to view this incredible property!

Office (352) 401-3755

Mobile (352) 362-5226