

# Thunder Ranch

**Price Reduced!!!**

*Ocala, Florida*

**26 Lots in Gated  
Equestrian Subdivision**

- Platted / Constructed Equestrian Estate subdivision on expansive 371± acre park-like setting.
- Entire subdivision consists of 33 lots ranging in size from 10 - 18 acres. Only 26 contiguous lots remain, totaling 304± acres (see attached lot list for individual lot acreage & pricing).
- Property is accessed through private, gated entrance with ornate stone accents. There are over 2.25 miles of paved roads, underground electric, ornamental street lights & signs, bridal trails, rolling hills, towering oaks and much more then can be explained on paper
- UNBELIEVABLE PRICE!!! Entire 26 lot package (304± acres) offered at...

**\$2,660,000 (ONLY \$8,750 / acre)**



[www.mcbrideland.com](http://www.mcbrideland.com)



Phone: (352) 401-3755  
Fax: (352) 401-3757  
Mobile (352) 362-5226



# THUNDER RANCH

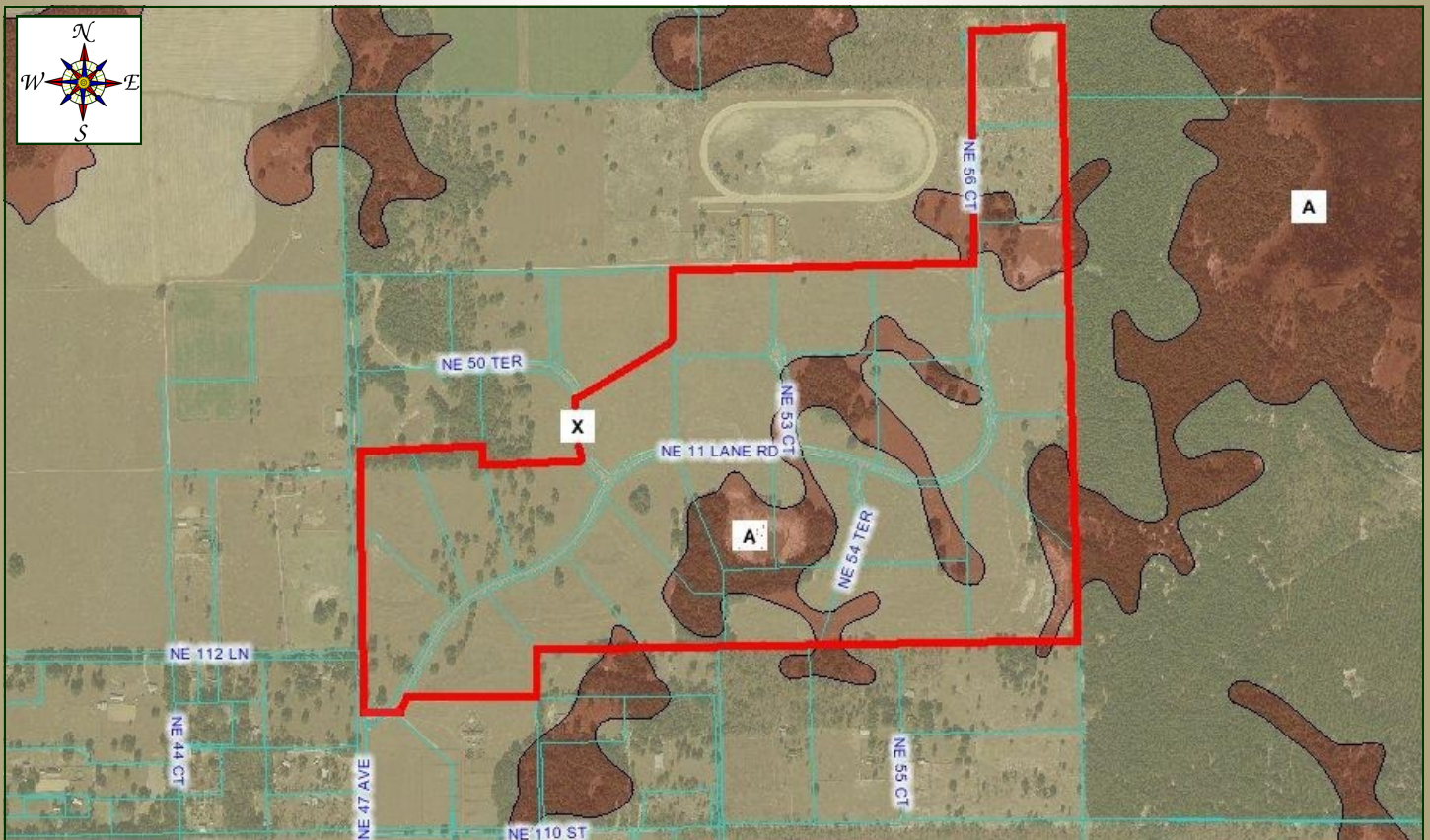
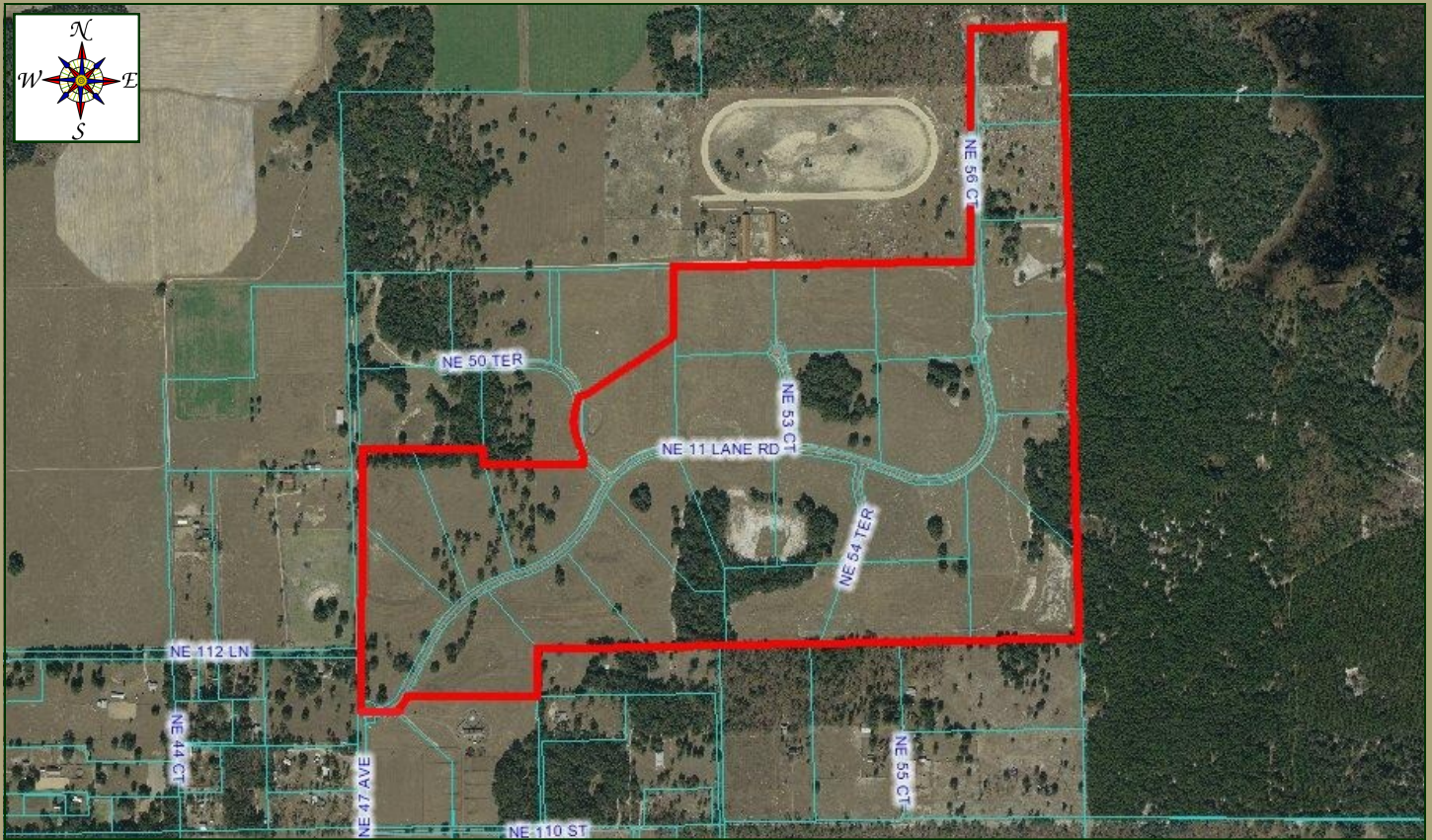
ESTATES

Phase One



Lot #	Acres
1	SOLD
2	SOLD
3	10.71
4	10.01
5	14.14
6	10.13
7	10.12
8	10.13
9	10.10
10	12.68
11	10.31
12	17.55
13	10.23
14	10.02
15	10.09
16	10.00
17	10.01
18	11.22
19	13.98
20	10.48
21	10.00
22	10.22
23	11.82
24	10.53
25	SOLD
26	SOLD
27	SOLD
28	SOLD
29	SOLD
30	10.09
31	10.08
32	10.65
33	11.09

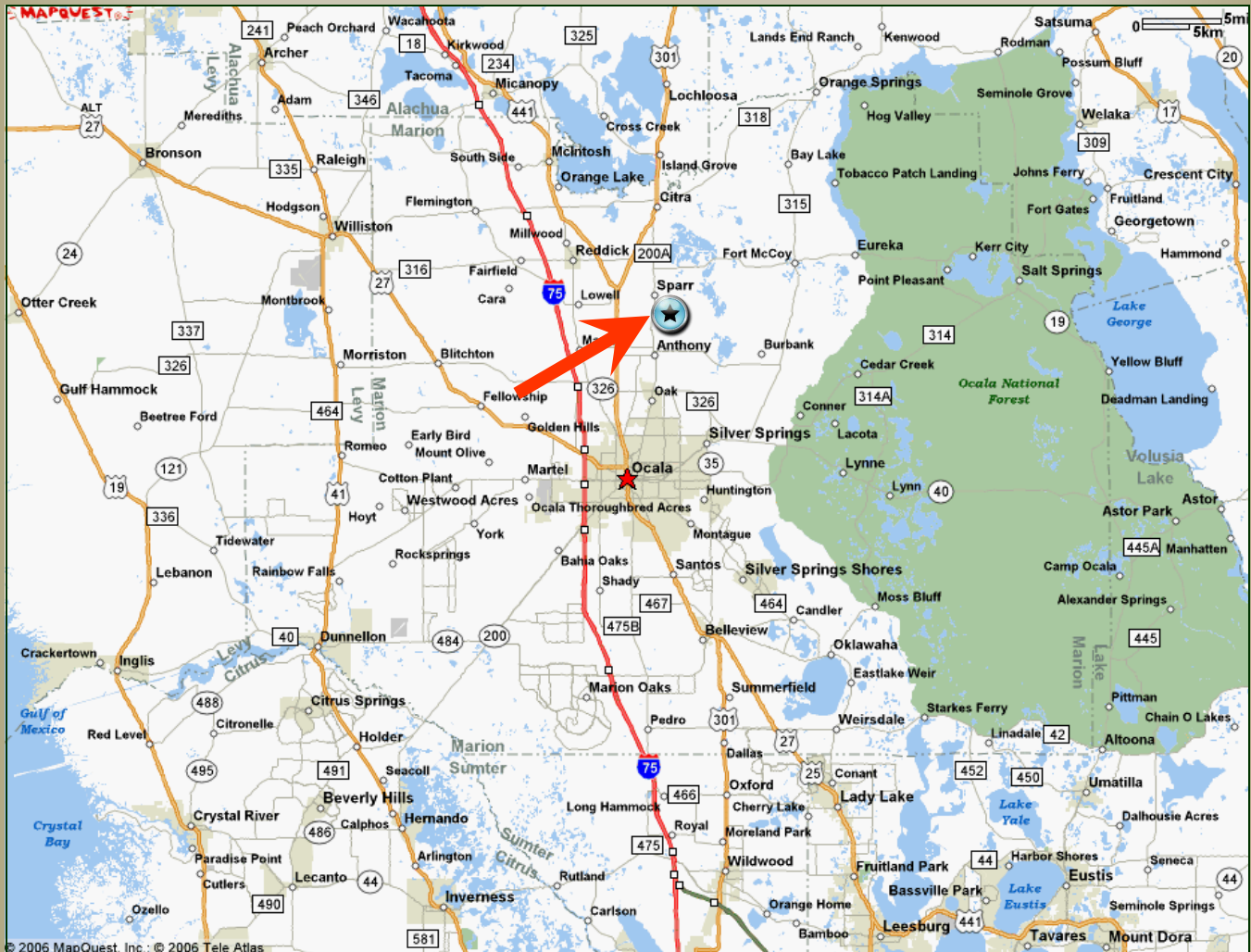






# Directions

## Thunder Ranch Equestrian Estates



### From Ocala:

Take NE Jacksonville Road North to Anthony. Veer Right on NE 21st Ave. Take NE 21st to NE 97th Street Road. Make a Right (heading East) on NE 97th Street Road & take for approximately 1.5 miles to NE 36th Avenue. Make a Left (heading North) on NE 36th Avenue for approximately 1 mile to NE 112th Lane. Make a Right (heading East) on NE 112th Lane until dead ends into NE 47th Avenue. Make a Right (heading South) on NE 47th Avenue to property entrance on Left. Signs visible from road. Call Nathan Garcia at McBride Land to set up an appointment to view the property (352) 401-3755 or (352) 362-5226.