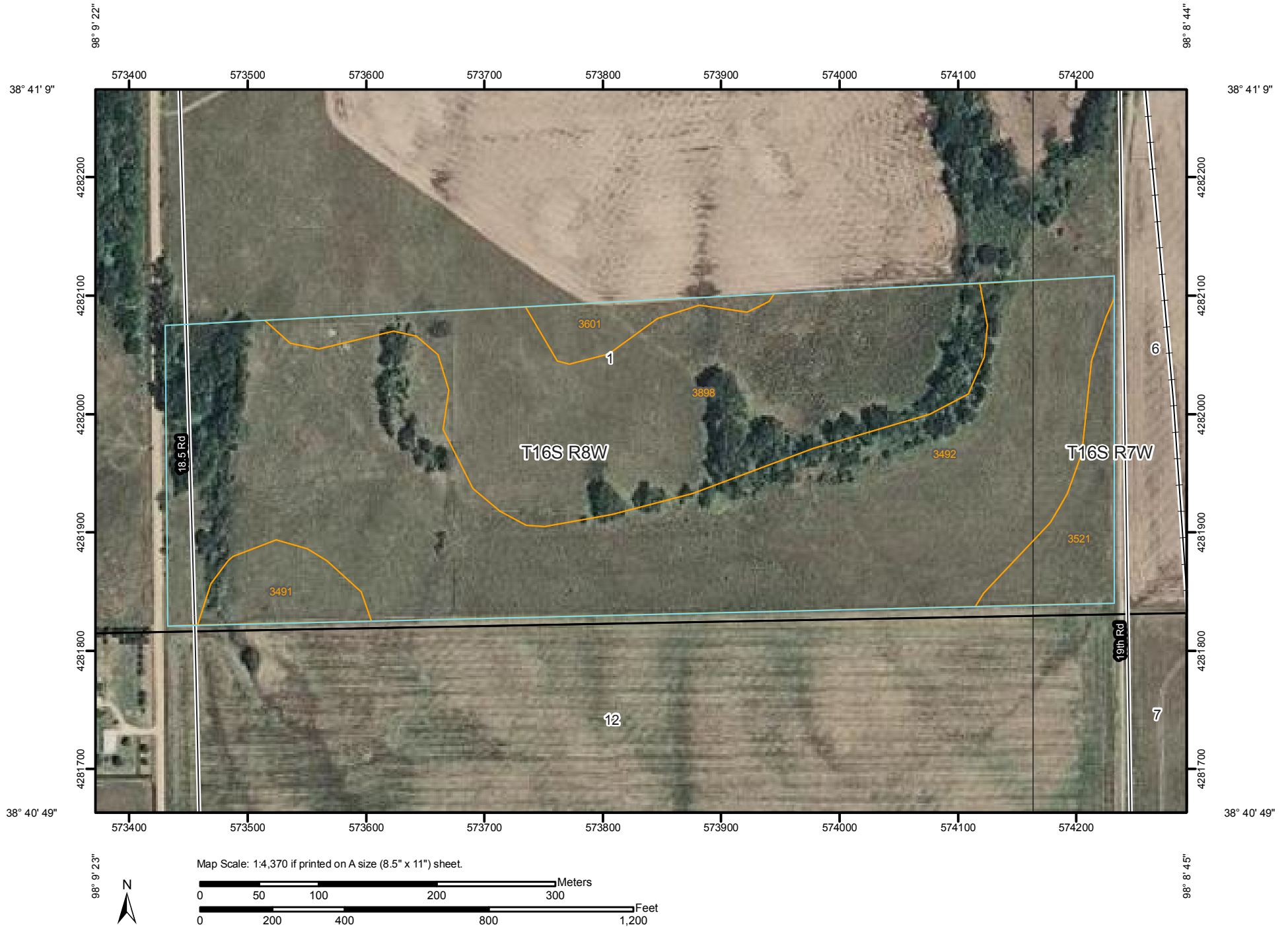


Soil Map—Ellsworth County, Kansas
(South Part SE/4 1-16-8)



Soil Map—Ellsworth County, Kansas
(South Part SE/4 1-16-8)

MAP LEGEND

Area of Interest (AOI)

 Area of Interest (AOI)

Soils

 Soil Map Units

Special Point Features

-  Blowout
-  Borrow Pit
-  Clay Spot
-  Closed Depression
-  Gravel Pit
-  Gravelly Spot
-  Landfill
-  Lava Flow
-  Marsh or swamp
-  Mine or Quarry
-  Miscellaneous Water
-  Perennial Water
-  Rock Outcrop
-  Saline Spot
-  Sandy Spot
-  Severely Eroded Spot
-  Sinkhole
-  Slide or Slip
-  Sodic Spot
-  Spoil Area
-  Stony Spot



Very Stony Spot



Wet Spot



Other

Special Line Features



Gully



Short Steep Slope



Other

Political Features



Cities



PLSS Township and Range



PLSS Section

Water Features



Streams and Canals

Transportation



Rails



Interstate Highways



US Routes



Major Roads



Local Roads

MAP INFORMATION

Map Scale: 1:4,370 if printed on A size (8.5" × 11") sheet.

The soil surveys that comprise your AOI were mapped at 1:24,000.

Warning: Soil Map may not be valid at this scale.

Enlargement of maps beyond the scale of mapping can cause misunderstanding of the detail of mapping and accuracy of soil line placement. The maps do not show the small areas of contrasting soils that could have been shown at a more detailed scale.

Please rely on the bar scale on each map sheet for accurate map measurements.

Source of Map: Natural Resources Conservation Service

Web Soil Survey URL: <http://websoilsurvey.nrcs.usda.gov>

Coordinate System: UTM Zone 14N NAD83

This product is generated from the USDA-NRCS certified data as of the version date(s) listed below.

Soil Survey Area: Ellsworth County, Kansas

Survey Area Data: Version 10, Sep 25, 2012

Date(s) aerial images were photographed: 7/13/2006

The orthophoto or other base map on which the soil lines were compiled and digitized probably differs from the background imagery displayed on these maps. As a result, some minor shifting of map unit boundaries may be evident.



Map Unit Legend

Ellsworth County, Kansas (KS053)			
Map Unit Symbol	Map Unit Name	Acres in AOI	Percent of AOI
3491	Wells loam, 1 to 3 percent slopes	1.8	3.4%
3492	Wells loam, 3 to 7 percent slopes	30.7	58.5%
3521	Cass fine sandy loam, occasionally flooded	2.6	5.0%
3601	Jansen sandy loam, 1 to 3 percent slopes	1.2	2.3%
3898	Meadin sandy loam, 3 to 15 percent slopes	16.1	30.7%
Totals for Area of Interest		52.4	100.0%