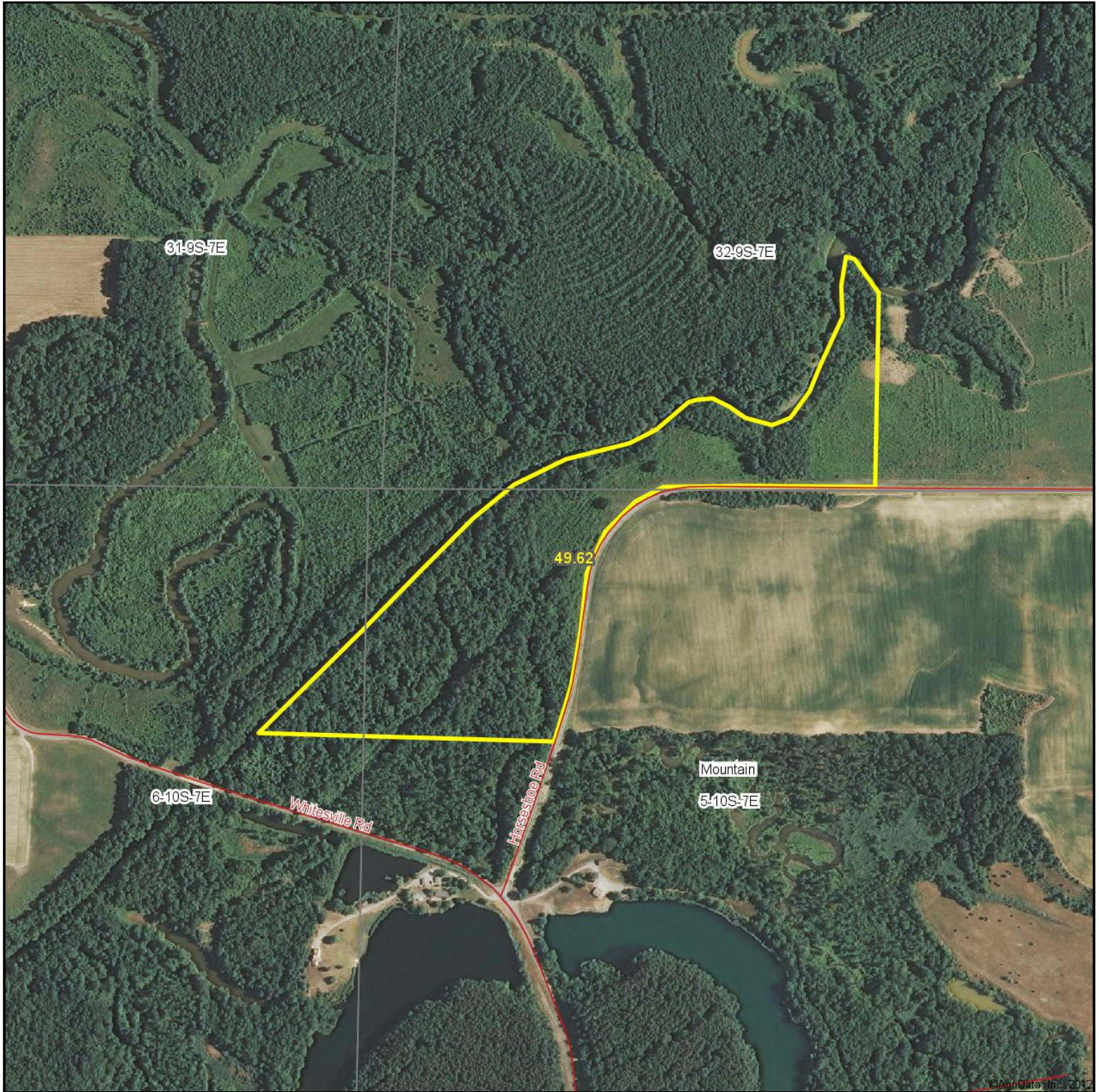


Aerial Map

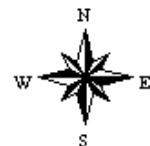


©AgriData, Inc. 2012

map center: 37° 41' 12.42, 88° 27' 48.61

scale: 8584

5-10S-7E
Saline County
Illinois



2/8/2013



WHITETAIL PROPERTIES
HUNTING & LANDSCAPE SPECIALISTS

Maps provided by:



©AgriData, Inc. 2012

www.AgriDataInc.com

Field borders provided by Farm Service Agency as of 5/21/2008. Aerial photography provided by Aerial Photography Field Office.