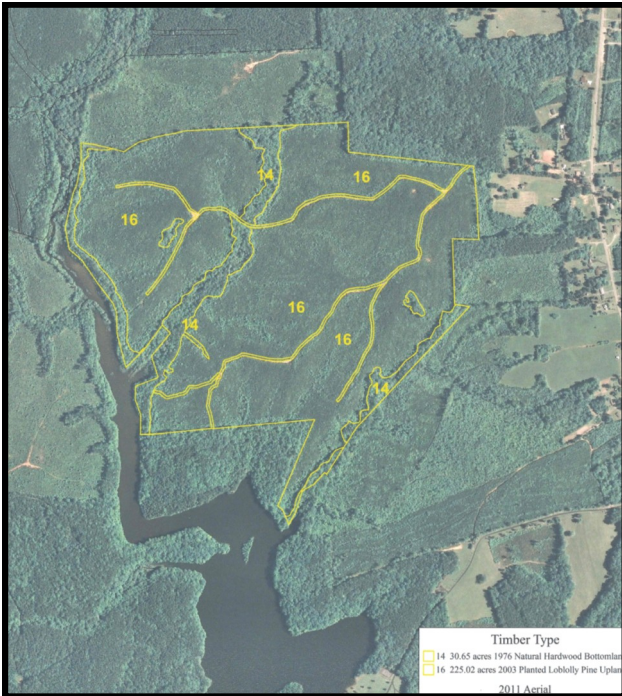


Block 13-407 — 255.67 +/- acres in Brunswick County, VA



Investment: \$385,000

Property Description

This waterfront tract is located four miles North of Lawrenceville adjoining the Lawrenceville Reservoir. The tract lays well gentle rolling landscape with approximately 2,300' of frontage on the lake. The access is by a 1,250' deeded right of way (Walker Place). The timber is 225 acres of 2003 planted Loblolly pine and 30 acres of natural hardwoods. This is a great investment/recreational tract, you have the timber investment and you also have the fishing, hunting for ducks, deer and turkey all on one tract.



Contact: Carwin Owens
Advance Land and Timber, LLC
carwinowens@msn.com
www.advancelandandtimber.com
434-841-0784 mobile
1-800-860-9909 office
205 West Butler Street
Lexington, SC 29072