



GREAT SOUTHERN *Land*



40-001 TURNER NORTH (RMK 8077)

Offered for \$108,700 (\$1,288.83/acre)
Lamar County
84+/- total acres

This is a great timberland investment with a well stocked stand of genetically improved loblolly pine. The trees will continue to grow regardless of the economy. It's a great alternative investment that you can enjoy today.



Great
Southern
Land

For A List Of All The RMK Timberland Group Tracts
Offered By Great Southern Land Visit:

www.GreatSouthernLand.com

GREAT SOUTHERN LAND, LLC

4027 U.S. Highway 231

Wetumpka, AL 36093

(800) 782-LAND (5263) - (334) 567-0924 Office—(334) 567-8024 Fax

Eddie Stone, RF, Listing Agent

205-702-4420 office

205-837-4466 cell

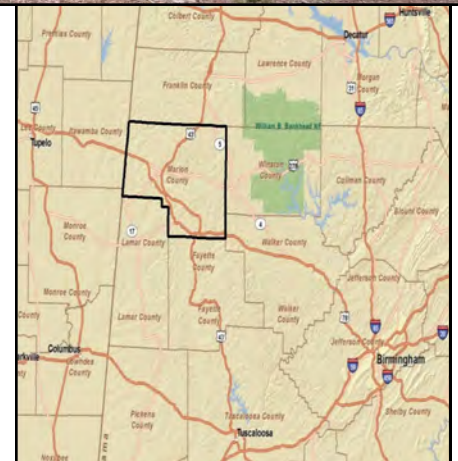
edstone@windstream.net

Fletcher Majors, ALC, Broker

334-567-0924 ext. 205

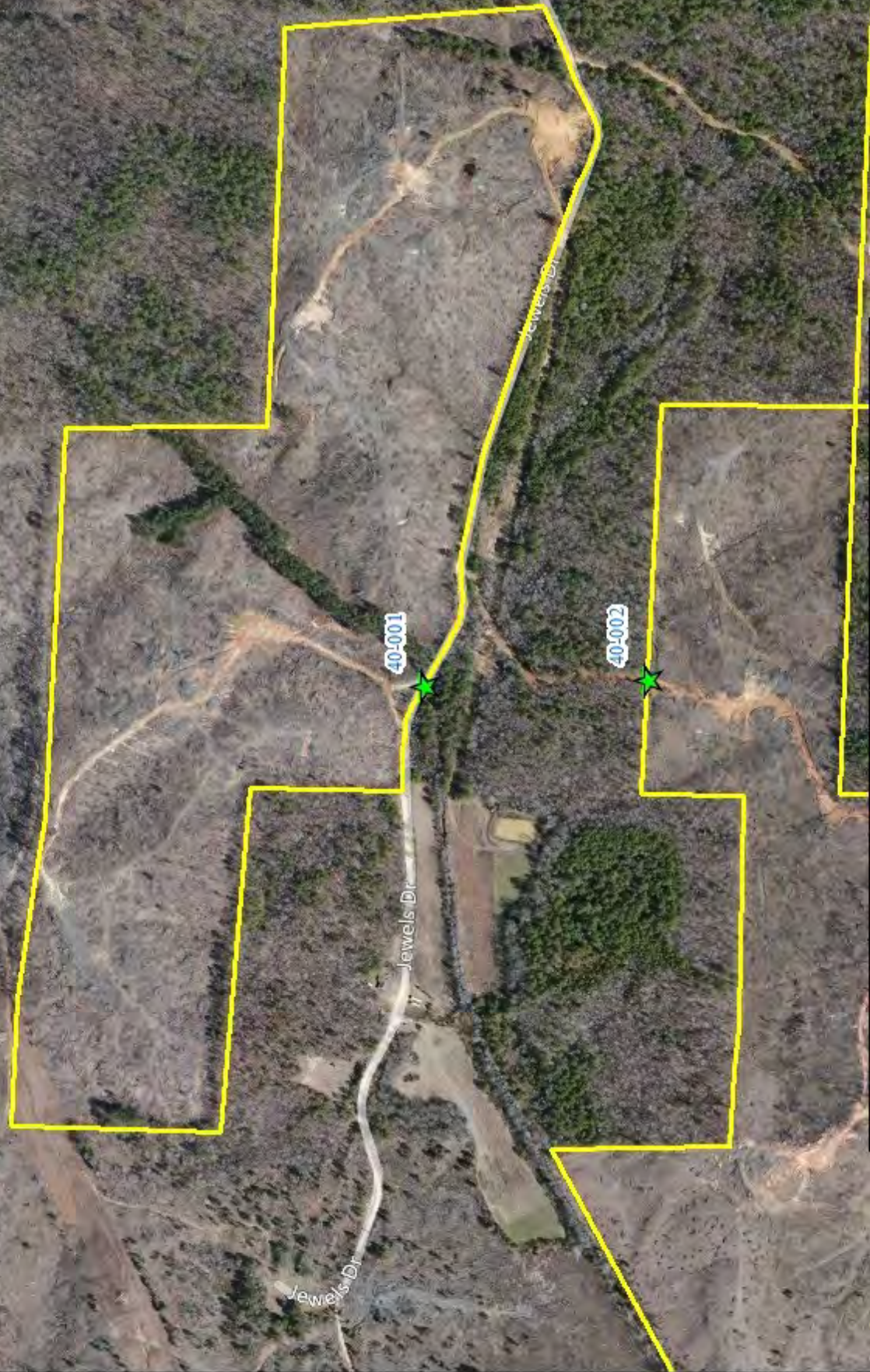
334-328-9278 cell

Fletcher@GreatSouthernLand.com





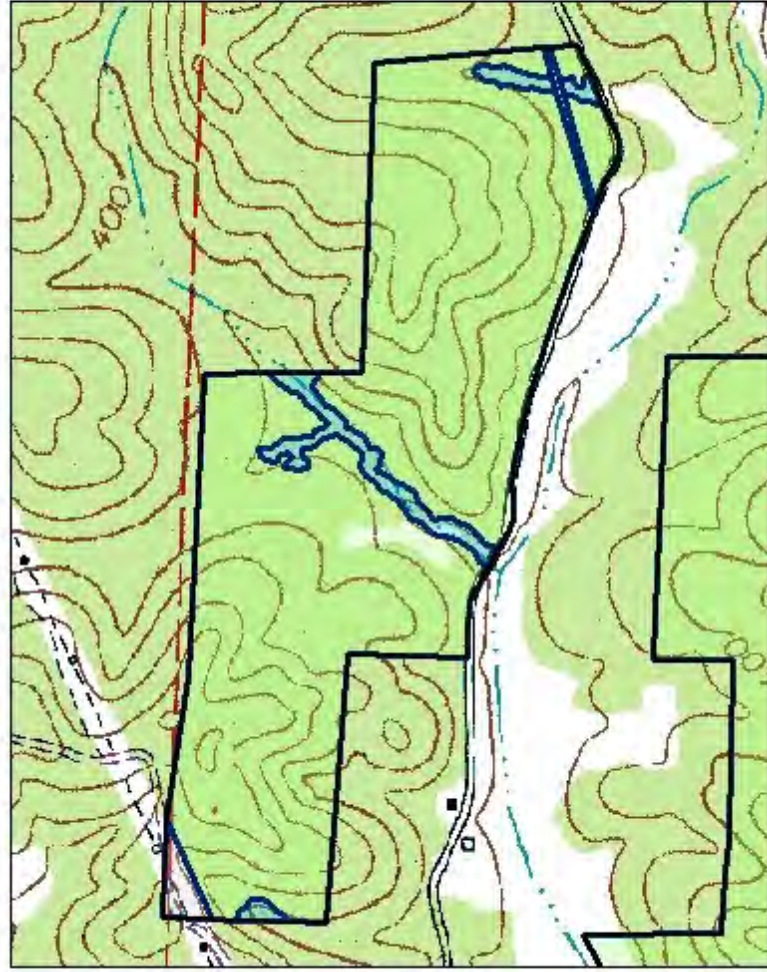
40-001
Turner North
84 +/- Acres
Bing Hybrid Aerial

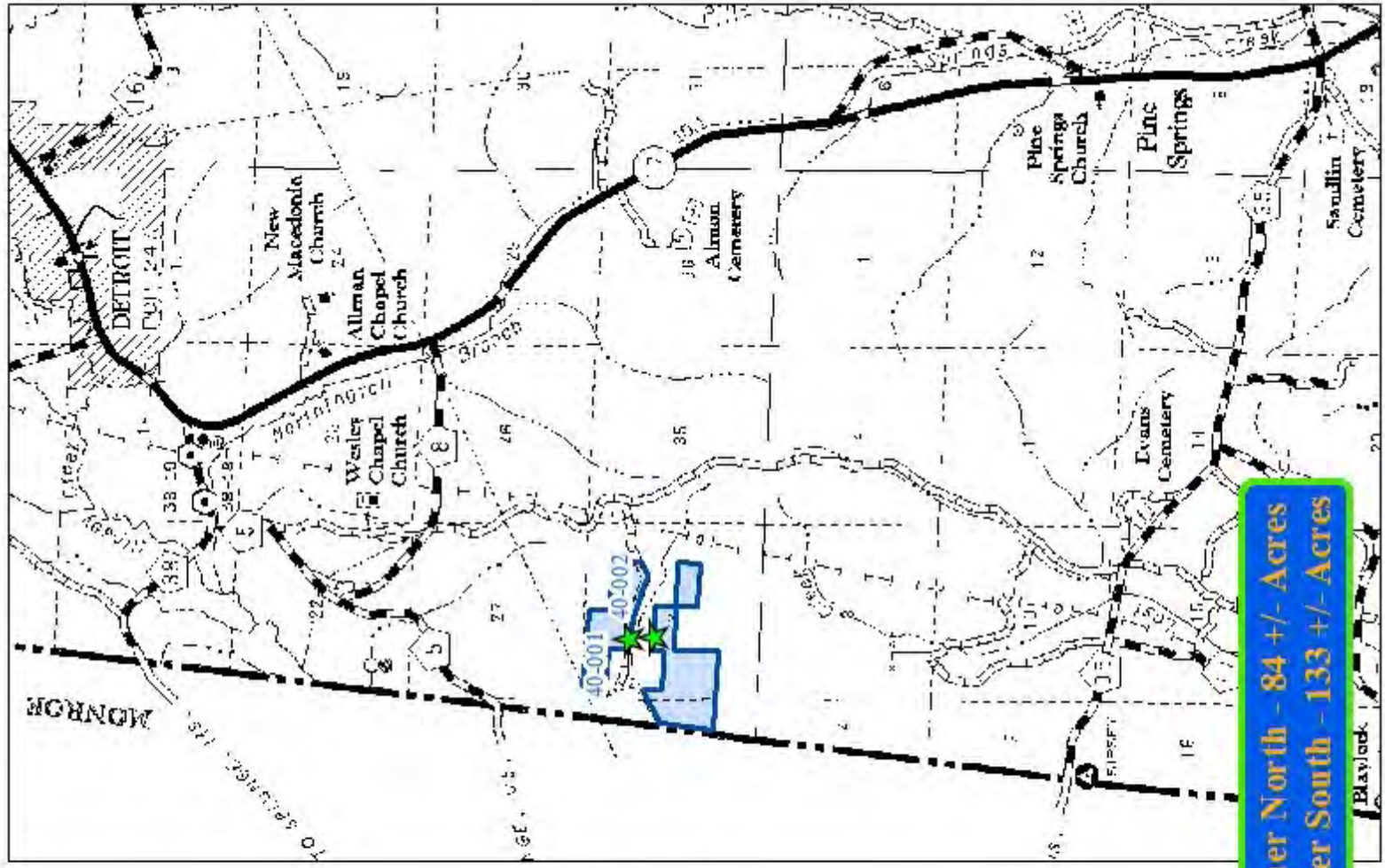


Copyright of USGS © 2012 Microsoft Corporation © 2010 NAVTEQ © 2008



40-001 Turner North - 84 +/- Acres





40-001 Turner North - 84 +/- Acres
40-002 Turner South - 133 +/- Acres



Sources: Esri, DeLorme, TomTom, USGS, Esri Japan, Esri China (Hong Kong)



© 2010 NAVTEQ © AND © 2010 Esri Corporation