

# ***Sonny Todd Real Estate***

---

***301 West First, P.O. Box 788, Big Timber, MT 59011  
(406) 932-6668 or (406) 932-LAND Fax: (406) 932-4838  
info@sonnytoddrealestate.com ~ www.sonnnytoddrealestate.com  
Toll Free: (866) 932-1031***



***514 W 4th  
Big Timber, Montana***

***\$115,000.***

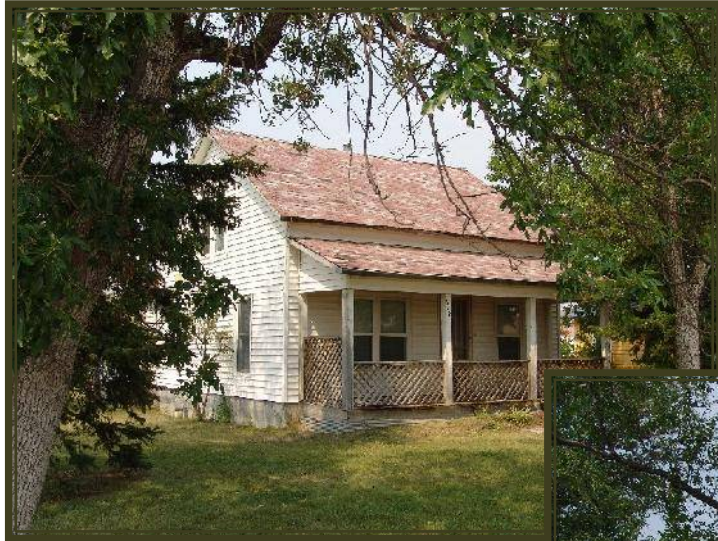


Farm style home on the west end near the high school. Mostly new windows, 2 remodeled bathrooms, detached garage and fenced backyard. Needs someone to move in and make it a home.

***MaryAnn Duffey  
Cell (406) 930-6607***

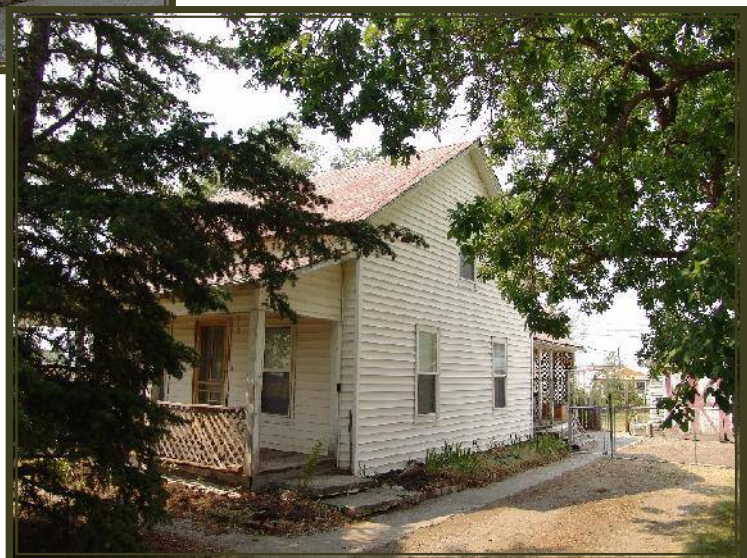
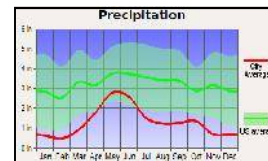




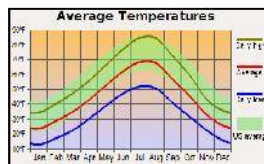


**Taxes: \$599.**

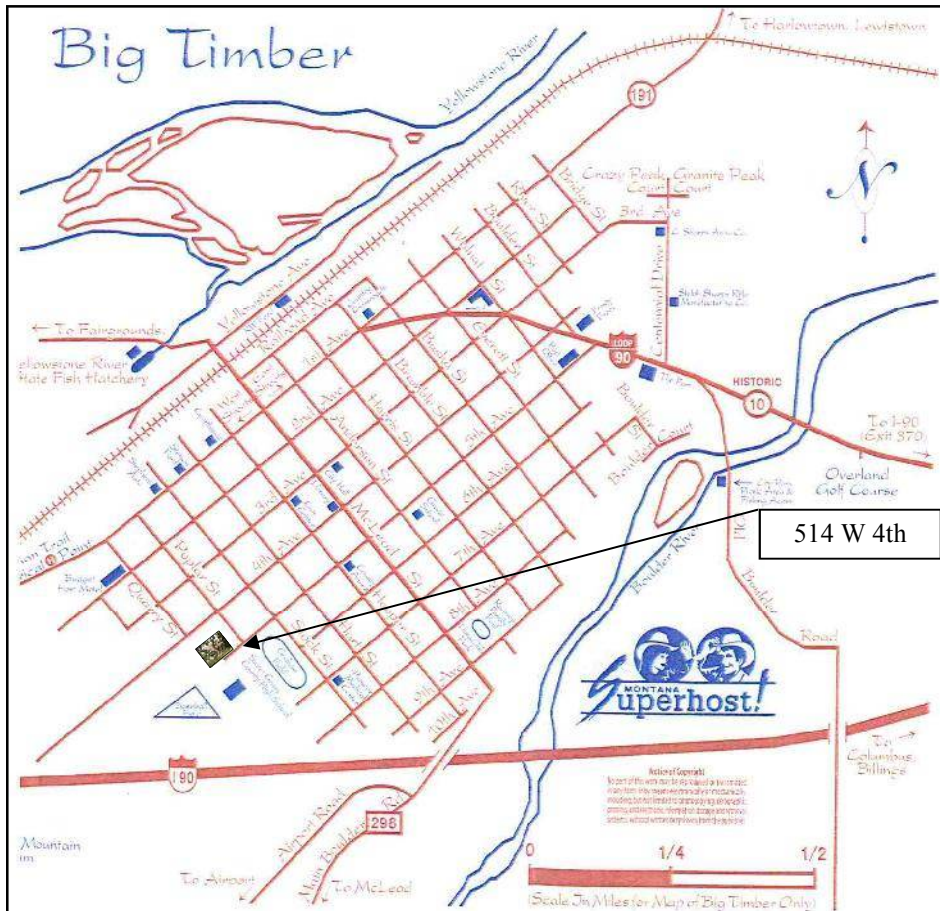
**Elevation: 4,089'**







*A small, comfortable Montana town, Big Timber has much to offer.*



**BIG TIMBER:** Located at the confluence of the Yellowstone and Boulder River, Big Timber is the Sweet Grass County seat and services as the support system to the areas cattle ranching community and recreation industry. Big Timber features a school system which offers K-12, a hospital, clinic, nursing home, Assisted Living, optometrist, dentist, car dealership, beauty shops, a quilt shop, golf course, churches, grocery and clothing stores, museums, art galleries, establishments offering fine food from the nationally acclaimed dining at "The Grand Hotel", to casual meals at the Frosty Freeze, motels, bed and breakfasts, movie theater, bowling alley and a paved airport capable of facilitating most any private aircraft.

