

35 Acres, Pasture, Home

Description

35 +/- acre farm that includes pasture, planted pines, shady Oaks, and a newly renovated home all in the heart of cultivation country. Located in Screven, GA on Dasher and Clyde Wasdin Roads, with all quality upland, this piece has unlimited potential. It offers 23 acres of pasture that has been cultivated for years. It not only has crop producing soils, but also road frontage that borders all sides. It is perfect for development and Subdividing as well as for livestock. 11 acres adjacent to the house have thinned pines with bermuda grass growing in-between and a nice big yard. The home includes 2 bedrooms, 1 bath, and approximately 900 sq ft of heated space, renovated.

Acreage

35 +/- Acres

Location

Wayne County

Price

Total Price: \$159,900

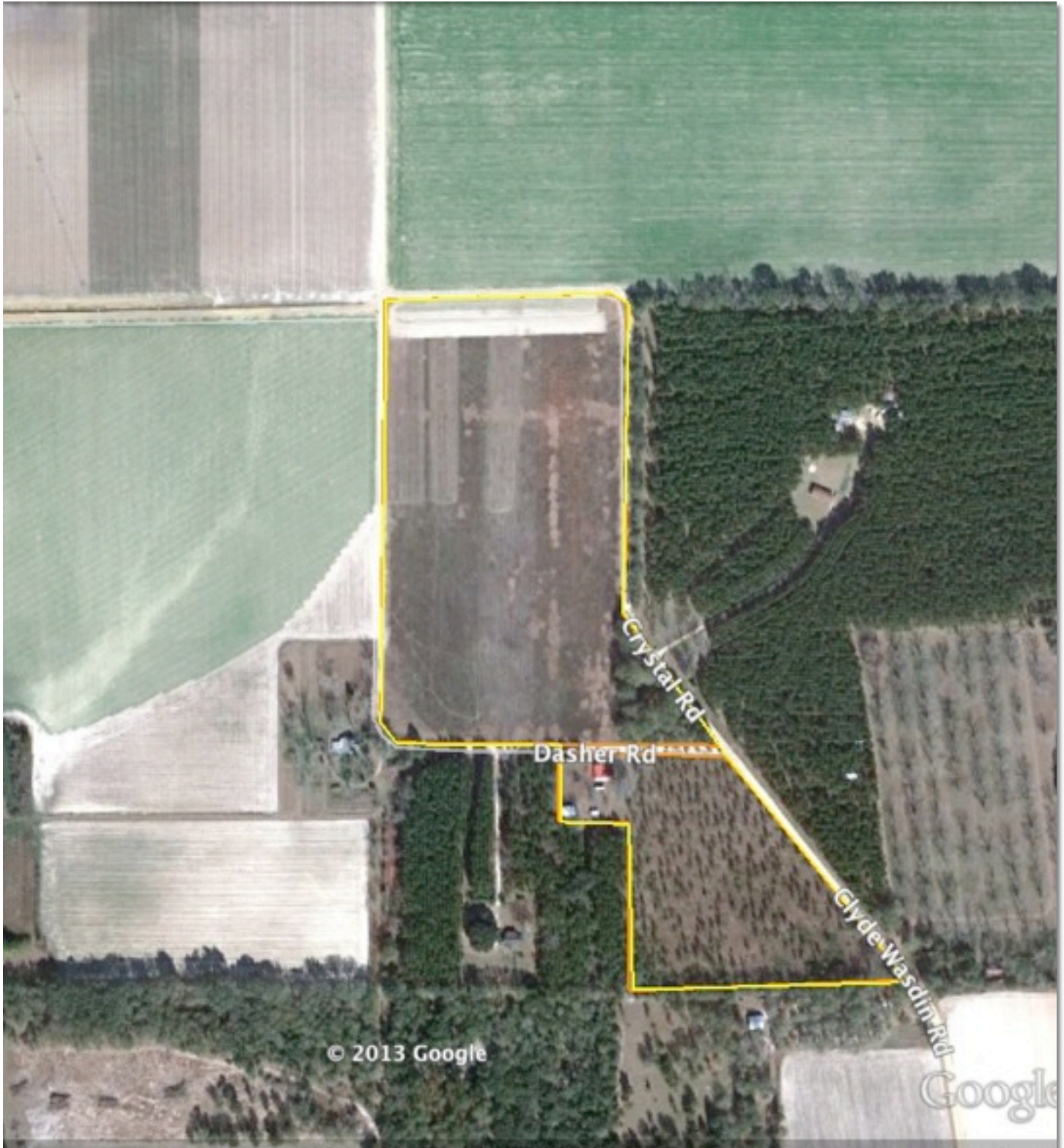


JESUP: 912.530.9515
TOLL FREE: 866.770.0775
FAX: 912.530.9989

cartergrouprealestate.com



Page 1



JESUP: 912.530.9515
TOLL FREE: 866.770.0775
FAX: 912.530.9989

cartergrouprealestate.com



Page 2