

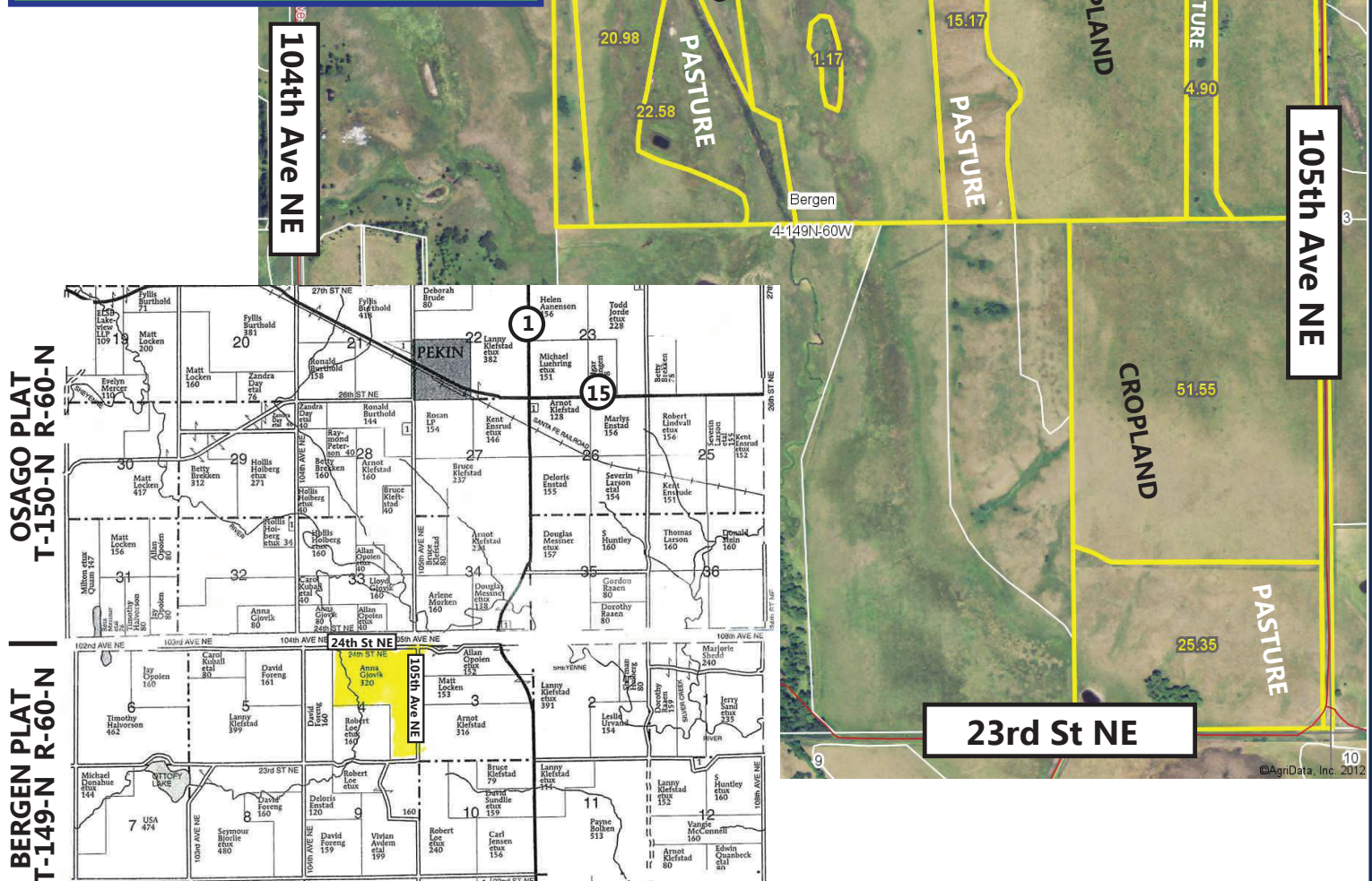
For Sale Nelson County, North Dakota Farm Land

Part of Section 4-149-060

Approximately 320.31 Acres

Total Acres 320.31
Crop Land Acres 230.89
Pasture Acres 75.00
Weighted average productivity 44.5%
Discounted 2012 Net R.E. Taxes \$1249.36

From intersection of State Hwy 1 and Hwy 15 East of Pekin go 2 miles South on Hwy 1 to 24th St NE. Then go west 1 mile to 105th Ave NE. You are now at the NE corner of the property



*All information contained herein is believed to be true but should be verified to the buyer's satisfaction in case of error, typographical or otherwise. All information is subject to change without further notice.

Steve D. Johnson
Real Estate Broker
Auctioneer License #976
701-799-5213
steve@johnsonauctionandrealty.com

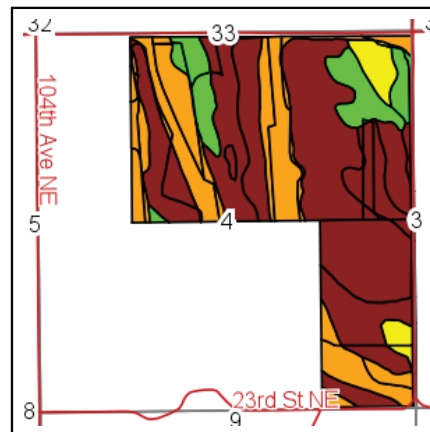
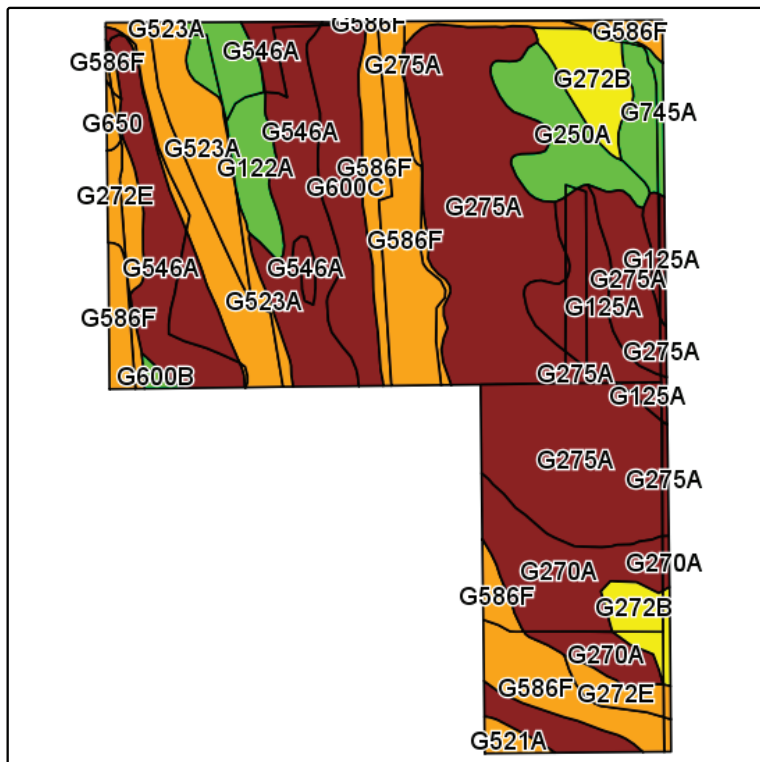


2867 28th Ave S | Fargo, ND 58103
www.johnsonauctionandrealty.com

For Sale Nelson County, North Dakota Farm Land

Part of Section 4-149-060

Approximately 320.31 Acres



State: **North Dakota**
 County: **Nelson**
 Location: **4-149N-60W**
 Township: **Bergen**
 Acres: **314.5**
 Date: **12/25/2012**



Field borders provided by Farm Service Agency as of 5/21/2008.
 Soils data provided by USDA and NRCS.

Code	Soil Description	Acres	Percent of field	Non-Irr Class Legend	Non-Irr Class	Productivity Index
G275A	Renshaw loam, 0 to 2 percent slopes	86.4	27.4%		IIIe	44
G586F	Edgeley-Kloten-Buse loams, 9 to 35 percent slopes	44.5	14.1%		VIe	33
G546A	Lowe loam, saline, 0 to 1 percent slopes, occasionally flooded	43.9	14.0%		IIIs	41
G523A	Lowe-Fluvaquents, channeled complex, 0 to 2 percent slopes, frequently flooded	25.6	8.1%		VIw	23
G600C	Walsh loam, 6 to 9 percent slopes	22.2	7.1%		IIIe	65
G270A	Arvilla sandy loam, 0 to 2 percent slopes	21	6.7%		IIIe	40
G125A	Cavour-Cresbard loams, 0 to 3 percent slopes	15.9	5.1%		IIIs	60
G272B	Arvilla-Sioux complex, 2 to 6 percent slopes	12.9	4.1%		IVs	35
G122A	Svea-Cresbard loams, 0 to 3 percent slopes	12.5	4.0%		IIs	82
G250A	Divide loam, 0 to 2 percent slopes	12.5	4.0%		IIs	62
G272E	Sioux-Arvilla-Renshaw complex, 9 to 25 percent slopes	7.7	2.5%		VIe	18
G745A	Lankin loam, 0 to 2 percent slopes	6.1	1.9%		IIc	89
G521A	Lowe loam, 0 to 1 percent slopes, occasionally flooded	1.7	0.5%		VIw	65
G650	Pits, gravel and sand	0.9	0.3%		VIIIs	9
G600B	Walsh loam, 2 to 6 percent slopes	0.7	0.2%		Ile	86
Weighted Average						44.5



*All information contained herein is believed to be true but should be verified to the buyer's satisfaction in case of error, typographical or otherwise. All information is subject to change without further notice.

Steve D. Johnson
 Real Estate Broker
 Auctioneer License #976
 701-799-5213
steve@johnsonauctionandrealty.com



2867 28th Ave S | Fargo, ND 58103
www.johnsonauctionandrealty.com