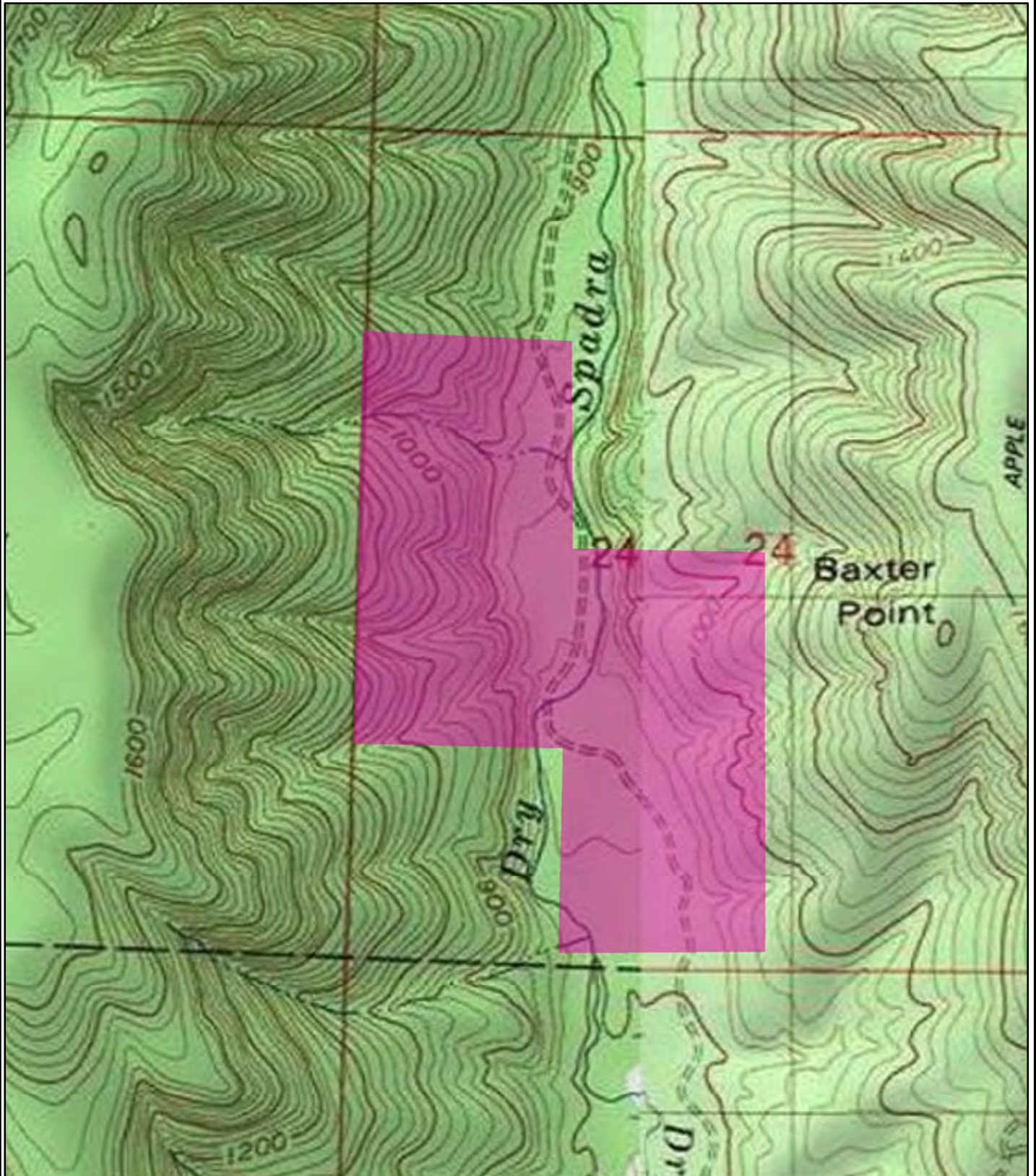


NOTICE OF LAND SALE  
"Ozark National Forest Tract"  
N½ of SW¼, SE¼ of SW¼, SW¼ of NW¼, Sec. 24, T11N, R24W, Johnson County, Arkansas  
Containing 160 acres, more or less



0 0.125 0.25  
Miles



Created: September, 2012  
Drawn By: JDT