

Miles to GREYSTONE LODGE from

Washington, D. C. .... 120

Baltimore, Md. .... 160

Richmond, Va. .... 160

The Highways are excellent with beautiful  
scenery

Address:

MRS. HOWARD A. STRAFFIN

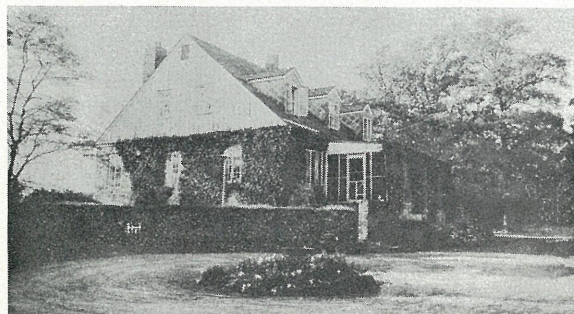
Owner-Operator

Telephone ~~477-3430~~ Basye, Va.

**856-2430**  
Telegraph

Western Union New Market

# Greystone Lodge



A Distinctive Mountain Inn  
in the  
Shenandoah Valley  
of  
Virginia

# Relax and enjoy delicious food at Greystone Lodge



GREYSTONE LODGE rests on the crest of Supinlick Mountains in the Alleghenies, 10 miles west of Mt. Jackson, Va., and 3 miles east of famous Orkney Springs. The elevation is 2000 feet, giving a 50 mile view of the famous Shenandoah Valley and its surrounding mountains.

The mountain air is stimulating. It is seldom very warm even in mid-summer. The nights are always cool.

The rooms in the lodge are large, light and well ventilated with French windows. In the spacious lounge with two fireplaces you will find an extensive library with books for all tastes. Our stone terrace with southern exposure is excellent for sun baths, **and your heart will thrill to the beauty of the stars at night.**

Greystone's recreation and game room is equipped with pool and tennis tables. Among available outdoor activities are badminton, archery, croquet, horse shoe pitching, hiking and mountain climbing. Golf courses, swimming, riding horses, bowling, ski slopes are nearby.

THE LODGE IS OPERATED ON THE AMERICAN PLAN. RATES ON APPLICATION.

Our menus include, as far as possible, farm products: fresh vegetables and fruits, milk, cream, eggs, chicken, home cured ham, and bacon, homemade sausage, scrapple, jellies and preserves. Other specialties are homemade bread, biscuits and rolls, and delicious desserts.

Nearby attractions are the famous Caverns of Virginia, Orkney Springs, Shrine Mont, Natural Bridge and Natural Chimneys.

Guests coming by Greyhound Bus are met at Mt. Jackson by appointment. Transportation to the Lodge is \$1.00 each way.

A visit at any time will provide the often needed rest of mind and body. Open throughout the year on reservation.

## NOTE TO HUNTERS AND SKIERS:

This is what you've been looking for. We've had years of experience in catering to you. Our mountains beckon during deer season and accommodations include early breakfast and packed lunches.

Basye has been described as a magnificent winter wonderland, so skiers take advantage of what the hills of Virginia have to offer. Greystone Lodge is just minutes away from skiing accommodations for beginners and experts.