

Miles to GREYSTONE LODGE from

Washington, D. C. 120

Baltimore, Md. 160

Richmond, Va. 160

The Highways are excellent with beautiful
scenery

Address

Basye

Virginia

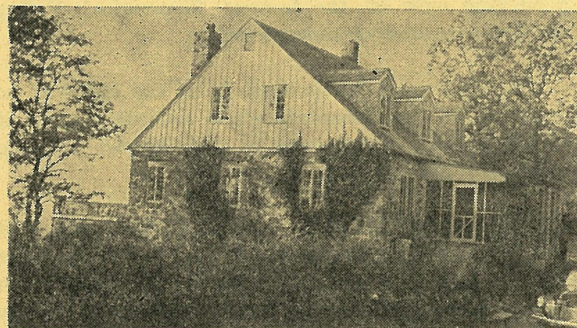
Telephone

Mt. Jackson 753-F-03

Telegraph

Western Union Mt. Jackson

Greystone Lodge



A Distinctive Mountain Resort

in the

Shenandoah Valley

of

Virginia

Spend Your Vacation At Greystone Lodge

GREYSTONE LODGE rests on the crest of Supinlick Mountain in the Alleghanies, 10 miles west of Mt. Jackson, Va., and 3 miles east of famous Orkney Springs. The elevation is 2000 feet, giving a 50 mile view of the famous Shenandoah Valley and its surrounding mountains.

The location is far enough from the highway to insure quiet. The mountain air is stimulating and it is seldom very warm even in mid-summer and the nights are always cool.

The rooms in the lodge are large, light and well ventilated with French windows. In the spacious lounge with its two fire-places, is a library with many books—some for all tastes. The stone terrace with southern exposure is excellent for sun baths. Our recreation and game room is equipped with pool and tennis tables.

Among out-door activities are badminton, croquet, horse shoe pitching, hiking and mountain climbing. Golf courses, swimming pool, riding horses and bowling alleys are nearby.

For those who enjoy visiting some of the many places noted for their historic interest, motor trips, hiking parties and picnics will be arranged.

The LODGE is operated on the American Plan and dinner is served in the middle of the day. The rates, including unexcelled Southern meals, are: Daily \$6 up per person; Weekly—Single \$35 up. Double \$60 up and \$65 for twin beds. Private or semi-private bath is extra, when available. Our menus include, as far as possible, our own farm products: fresh vegetables & fruits, milk, cream, eggs, chicken, home cured ham, and bacon, home made sausage, scrapple, jellies and preserves. Other specialties are home made bread, biscuits & rolls, and delicious desserts.

Nearby attractions are the famous Caverns of Virginia, Orkney Springs, Shrinemont, Natural Bridge, Natural Chimneys, West Virginia State Park at Lost River and the factory of the Shenandoah Community Workers, at Bird Haven, where unique articles for home use are hand made in maple.

Guests coming by Greyhound Bus are met at Mt. Jackson by appointment. Transportation to the Lodge is \$1 each way.

A visit during the Holiday or at any time will provide the often needed rest of mind and body. Open throughout the year.