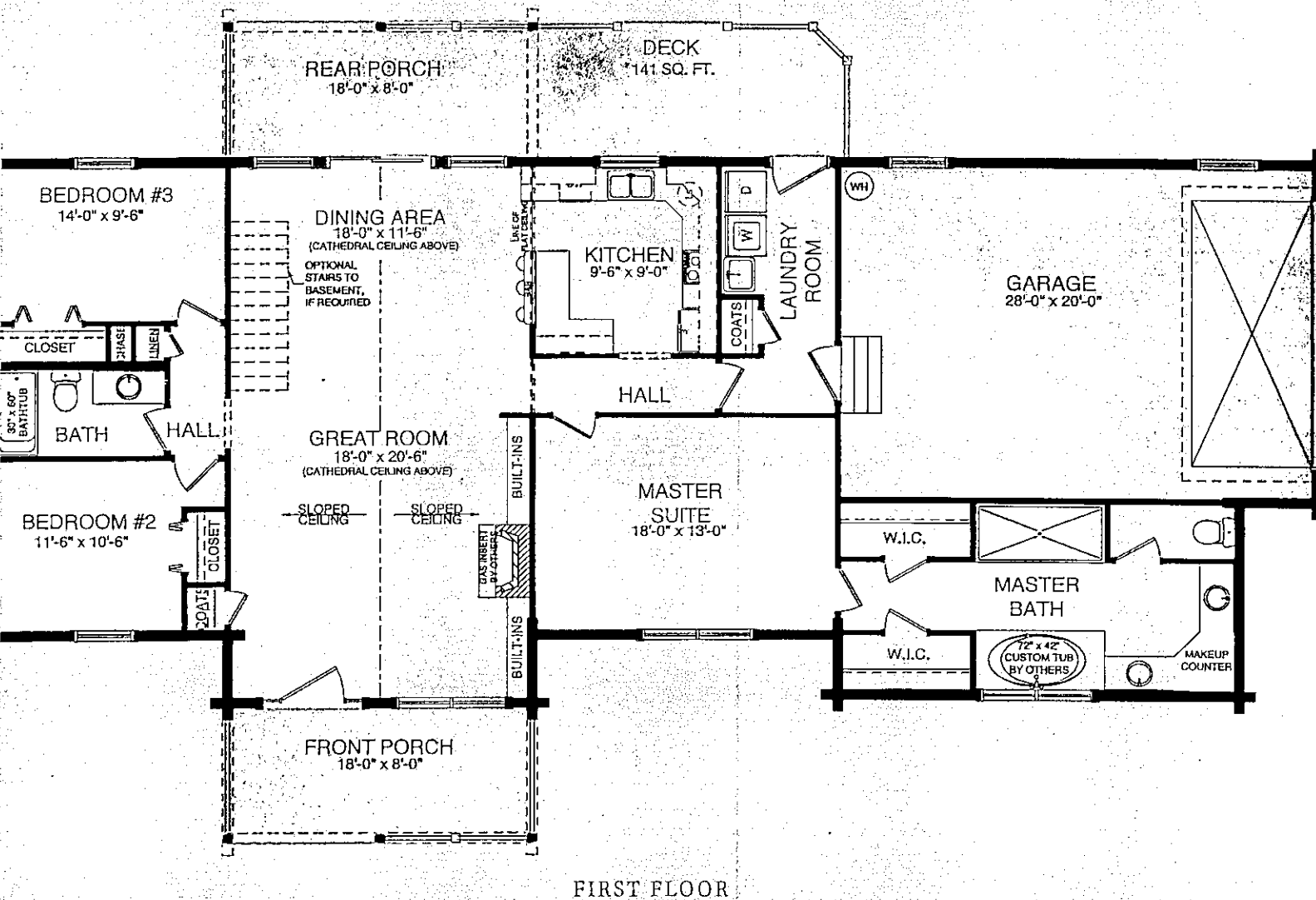


This is a detailed architectural floor plan of a single-story house. The plan includes the following rooms and features:

- Front Porch:** Located at the top of the plan, with a width of 18'-0" and a depth of 11'-6". It includes a "STEPS TO GRADE BY OTHERS" and a "FRONT LOG GABLE ABOVE".
- Bedroom #2:** Located on the right side, measuring 10'-6" by 12'-0". It contains a "BED", "BATH", "CLOSET", and "DRESSING".
- Bath:** Located between Bedroom #2 and the Hall, measuring 5'-0" by 7'-0". It includes a "TUB", "TOILET", and "SINK".
- Hall:** A central hallway measuring 5'-0" by 2'-0" connecting the bedrooms and bathrooms.
- Great Room:** A large open area measuring 18'-0" by 11'-6", featuring a "FIRE PLACE", "CEILING", and "FLOOR".
- Dining Area:** Located within the Great Room, measuring 11'-6" by 11'-6". It includes a "DINING TABLE" and "SEATING".
- Kitchen:** Located at the bottom center, measuring 11'-6" by 11'-6". It features a "KITCHEN", "SINK", "STOVE", and "REF".
- Laundry Room:** Located adjacent to the kitchen, measuring 7'-0" by 7'-0". It includes a "WASHER", "DRYER", and "CLOSET".
- Master Suite:** A large bedroom measuring 18'-0" by 11'-6", featuring a "BED", "CLOSET", and "WALK-IN CLOSET".
- Master Bath:** Located within the Master Suite, measuring 7'-0" by 7'-0". It includes a "TUB", "TOILET", and "SINK".
- Garage:** Located on the left side, measuring 20'-0" by 31'-0". It includes a "GARAGE" and "STEPS TO GRADE BY OTHERS".
- Deck by SLH:** Located at the bottom, measuring 15'-6" by 15'-6". It includes a "DECK BY SLH (141 SQ. FT.)" and "STEPS TO GRADE BY OTHERS".
- Rear Porch:** Located at the bottom right, measuring 18'-0" by 11'-6". It includes a "REAR LOG GABLE ABOVE" and "STEPS TO GRADE BY OTHERS".

The plan also includes various structural details such as "CONCRETE SLAB", "WOOD FLOOR", "CEILING", and "FLOOR". Dimensions are provided for all major rooms and overall exterior measurements.



The renderings and floorplans you find in this 2008 Southland Planning Guide represent actual plans of Southland Log Homes, but may not necessarily be to scale or complete. Please see a Southland Sales Consultant for construction plans of your favorite home or more about our design services.