

For Sale

Banks Farm



Capital
Agricultural
Property
Services, Inc.

www.capitalag.com

2,420± acres

901-756-5367

Desha County, AR

Size: 2,420± Tax Acres, 2,187.6± FSA Cropland Acres, 42.0± CRP Acres, 2,125.0± Total Irrigated Acres, and 2,075± Leveled Acres.

Property Taxes: 2011: \$11,864.14 or \$4.90 per acre

Improvements: 23 - Turbine Wells with Gearheads and Pumps
3 - Electric Submersible Wells

Location: This farm is located primarily northwest of Dumas, Desha County, AR

Possession: At closing, subject to existing farmland leases.

Showing: By appointment only.

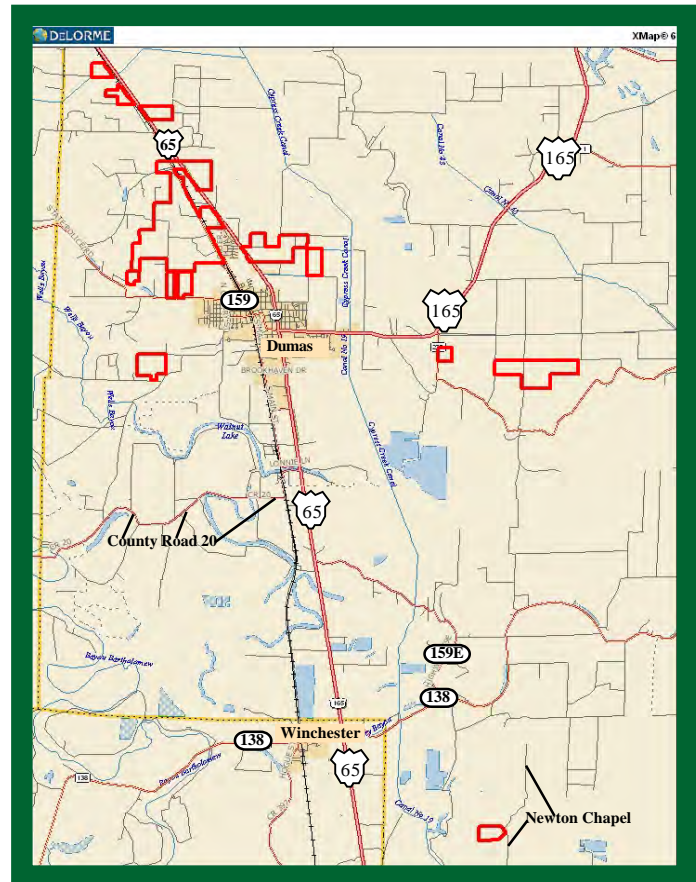
Management: Professional farm management is available.

FSA Data:	Crop	Base Acres	Dir & CC Yield
Farm #2724	Wheat	200.5	40 bu.
	Cotton	433.3	472 lb.
	Corn	65.4	83 bu.
	Grain Sorghum	286.5	54 bu.
	Soybeans	462.3	21 bu.
	Rice-Lng Grain	659.5	3,797 lb.
	Rice-Med Grain	23.0	3,795 lb.
		<u>2,130.5</u>	

Farm #221	Wheat	28.9	35 bu.
	Grain Sorghum	3.8	52 bu.
	Soybeans	39.0	16 bu.
		<u>71.7</u>	

Description: This farm lies primarily adjacent to and northwest of Dumas, AR, on either side of U.S. Highway 65, all in Desha County. Additional tracts are located west, east, and south of Dumas. With a very high percentage of well developed Class II and III silt loam and clay soils, this property has a long production history of cotton and multiple grains, including corn, rice, soybeans and wheat. This farm has approximately 2,125± irrigated acres which is over 97% irrigated and approximately 2,075± acres (95%) leveled. There are 23 turbine wells and 3 electric wells with ample high quality water on the farm. The farm is over 90% cropland with 100% FSA bases.

Soils: Predominant cropland soil types are Rilla, Hebert, Portland, and McGehee silt loams; Desha, Portland, Perry and Sharkey clays.



Additional maps on the following pages.

For more information contact:

Murry McClintock - Real Estate Salesperson
Tel: (662) 363-1801

Agent for Seller

The information contained herein is from sources Capital Agricultural Property Services, Inc. (CAPS) considers reliable, such as, but not necessarily including or limited to, Seller, CFSA and NRCS records and data, and information from other government agencies and offices. However, CAPS has not independently verified and does not guarantee the accuracy, completeness or sufficiency of this information. The prospective Buyer is, therefore, advised to independently confirm information provided herein, and any reliance upon this data is made at Buyer's own risk. Similarly, the past history of this property is no guaranty of future performance, which is subject to unpredictable variables such as weather management and operational skills, market factors and general economic conditions. Accordingly, CAPS does not assume, and hereby expressly disclaims, any responsibility for the future operating and investment results of the property.

CAPS' participation in this transaction is solely in the capacity of a real estate broker, and it does not hold itself out as having expertise or specialized knowledge in the fields of environmental science, engineering, chemistry, hydrology, meteorology, geology, seismology, health or financial investments. No statement made by CAPS relating to this property may be relied upon by the buyer as reflecting particular expertise in these or any other areas of specialized knowledge. In the course of conducting a due diligence inspection of the property, the prospective Buyer is strongly advised to consult with such brokers, attorneys, financial advisors or other professional or expert consultants as may be necessary to fully protect the Buyer's rights and interests.

Capital Agricultural Property Services, Inc., as Real Estate Broker, only represents the SELLER in this transaction. This offering is subject to prior sale, matters of title, change of price, rental or conditions and to any special listing conditions or requirements the seller may impose, and it may be withdrawn from the market without advance notice.

Banks Farm

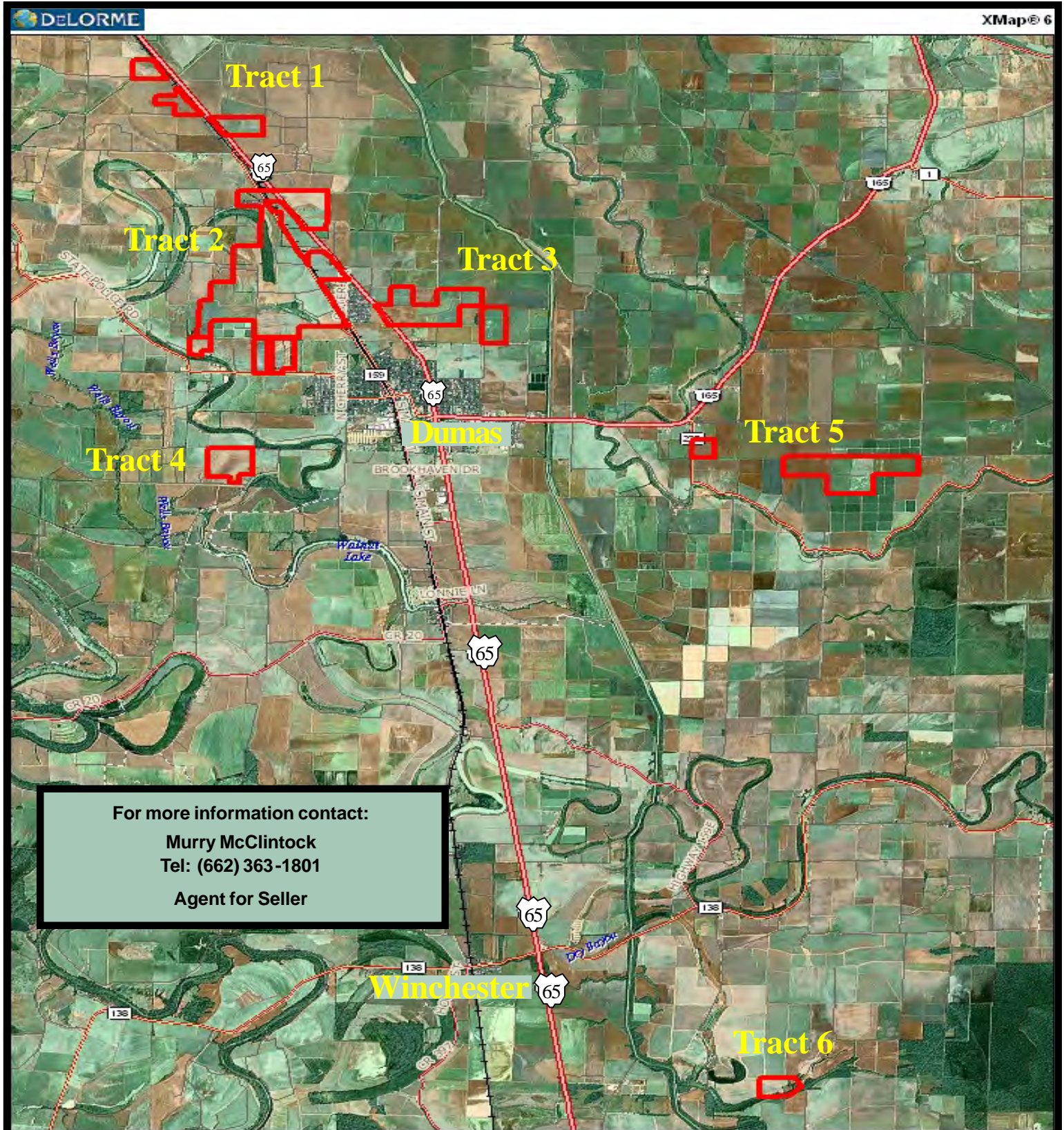
2,420± acres
Desha County, AR



Capital
Agricultural
Property
Services, Inc.
901-756-5367

www.capitalag.com

Property Aerial Map - All Tracts



Banks Farm

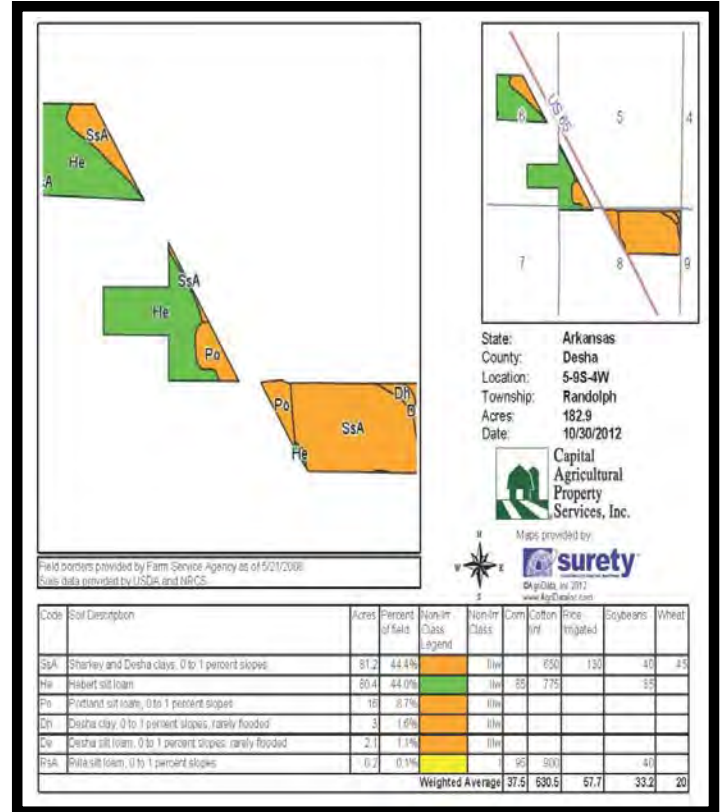
2,420± acres
Desha County, AR



Capital
Agricultural
Property
Services, Inc.
901-756-5367

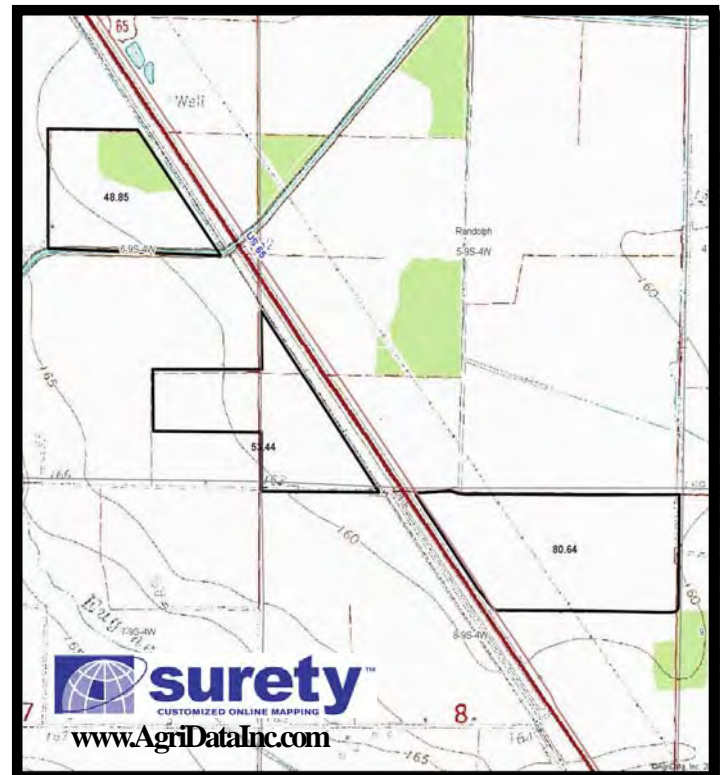
www.capitalag.com

Tract 1 - Aerial, Soils and Topography Maps



For more information contact:

Murry McClintock
Tel: (662) 363-1801
Agent for Seller



Banks Farm

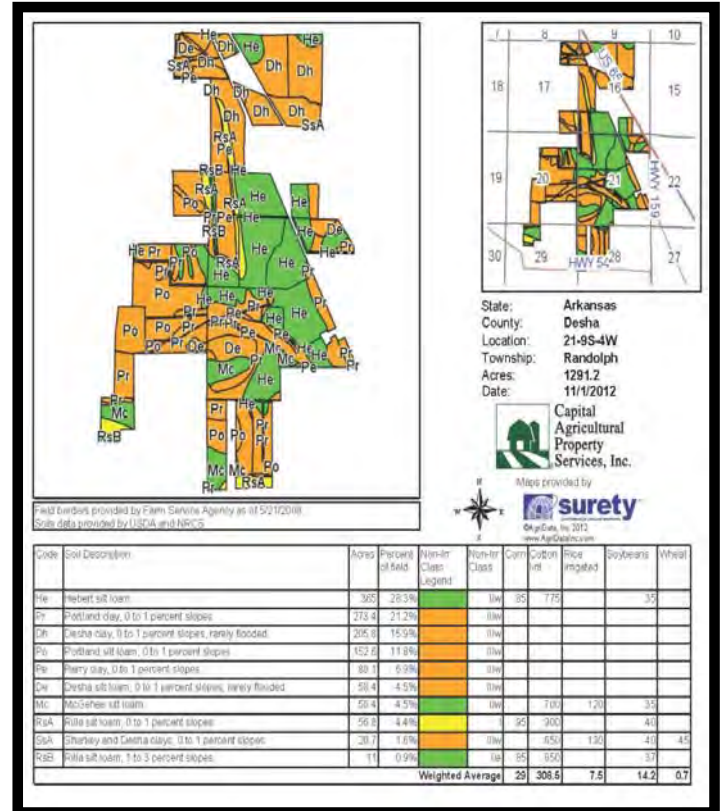
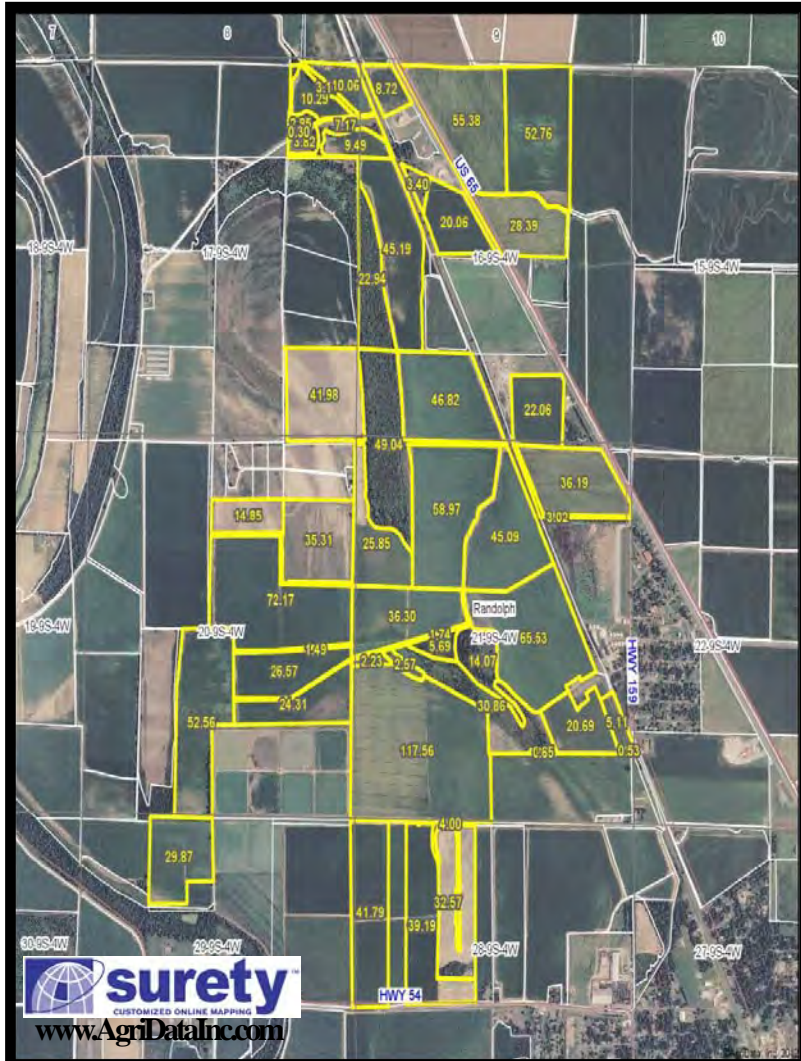
2,420± acres
Desha County, AR



Capital
Agricultural
Property
Services, Inc.
901-756-5367

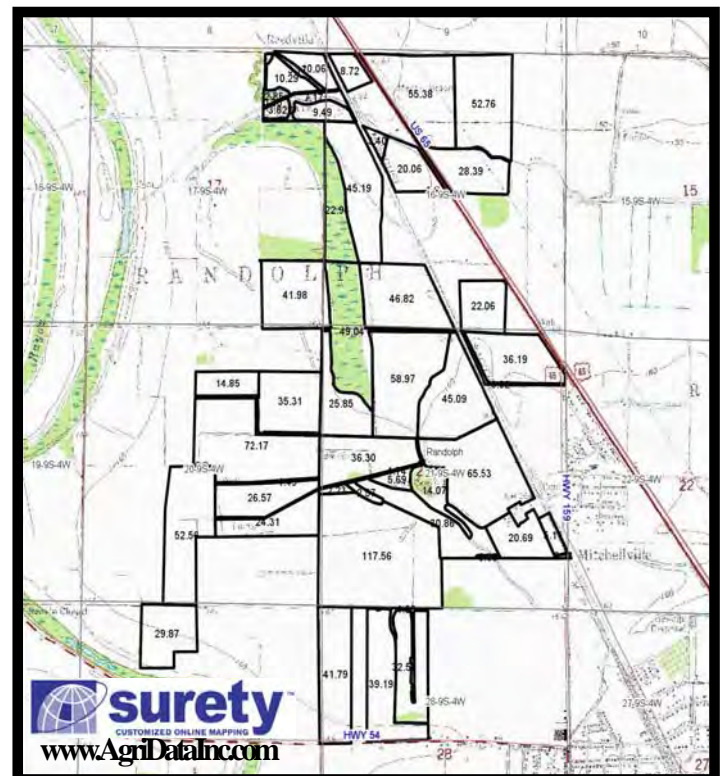
www.capitalag.com

Tract 2 - Aerial, Soils and Topography Maps



For more information contact:

Murry McClintock
Tel: (662) 363-1801
Agent for Seller



Banks Farm

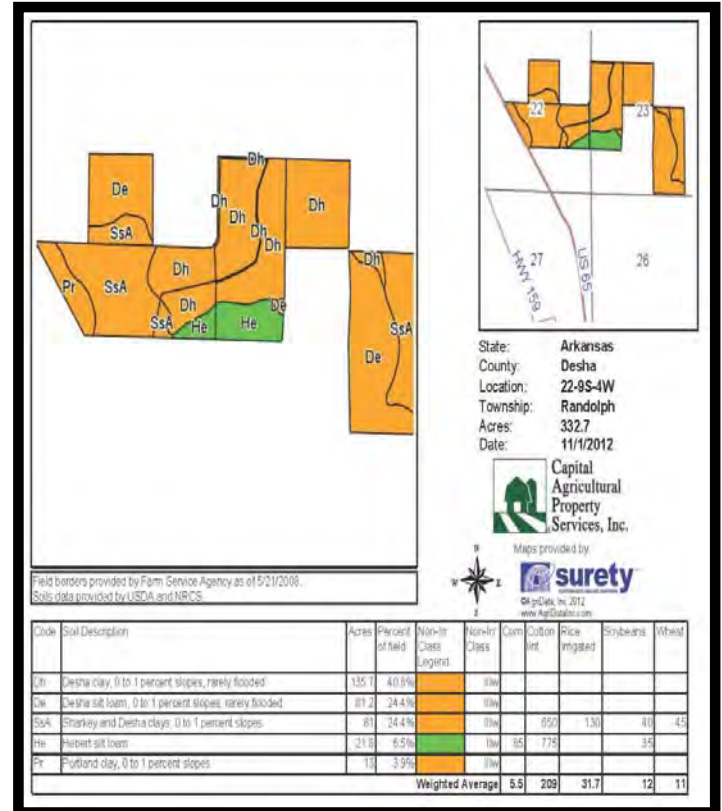
2,420± acres
Desha County, AR



Capital
Agricultural
Property
Services, Inc.
901-756-5367

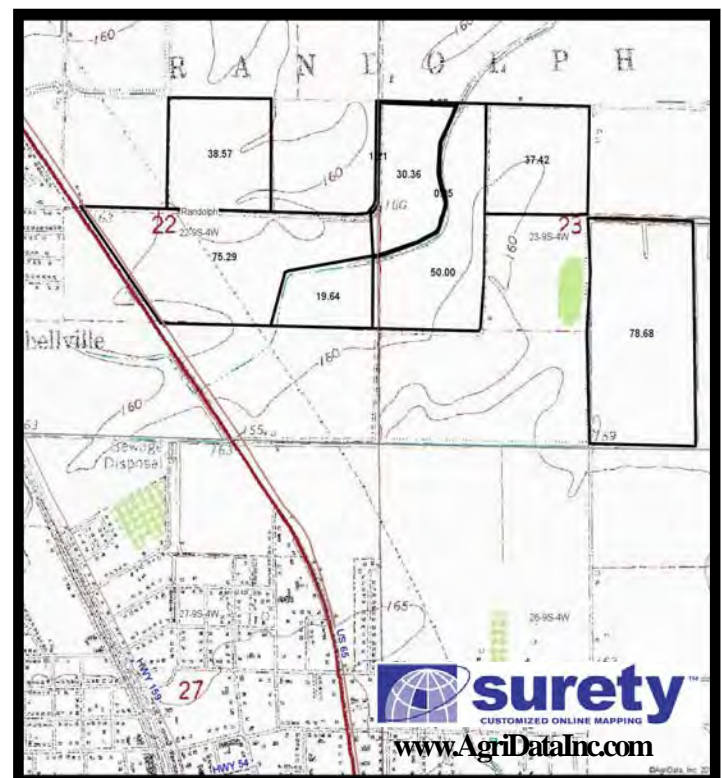
www.capitalag.com

Tract 3 - Aerial, Soils and Topography Maps



For more information contact:

Murry McClintock
Tel: (662) 363-1801
Agent for Seller



Banks Farm

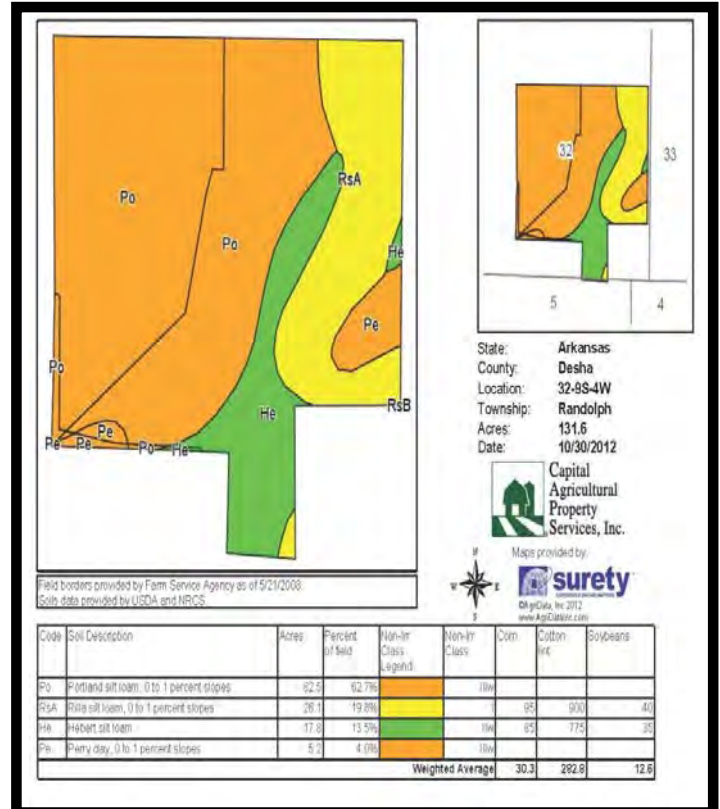
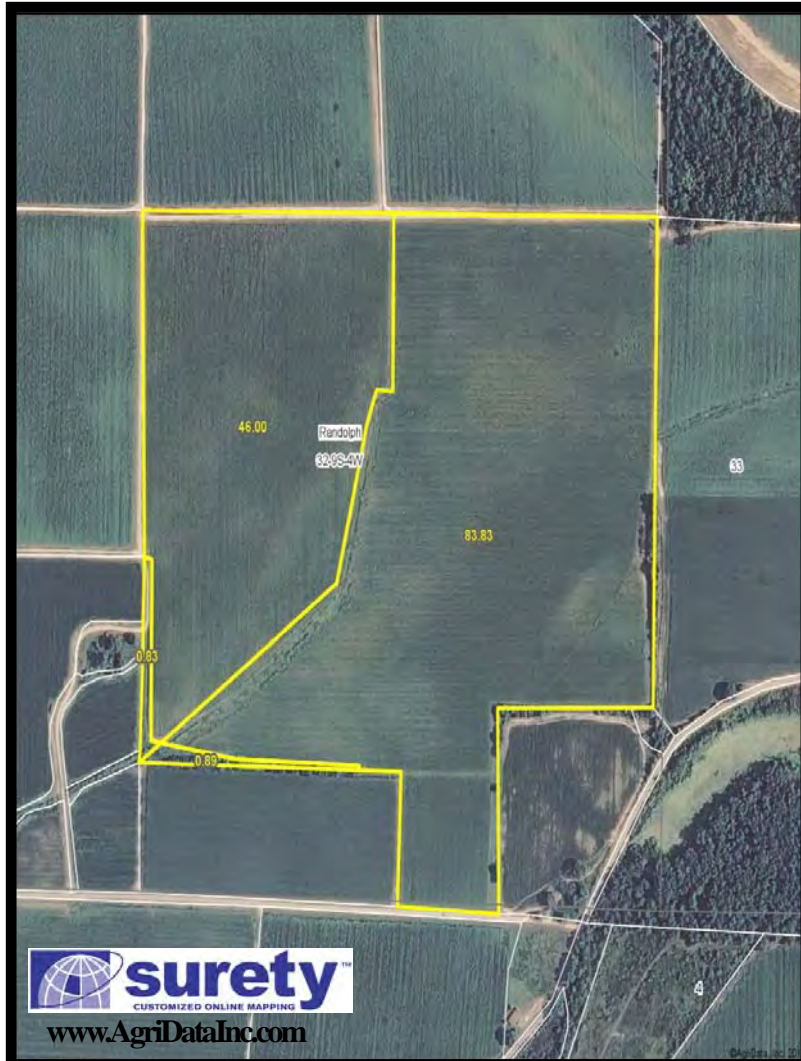
2,420± acres
Desha County, AR



Capital
Agricultural
Property
Services, Inc.
901-756-5367

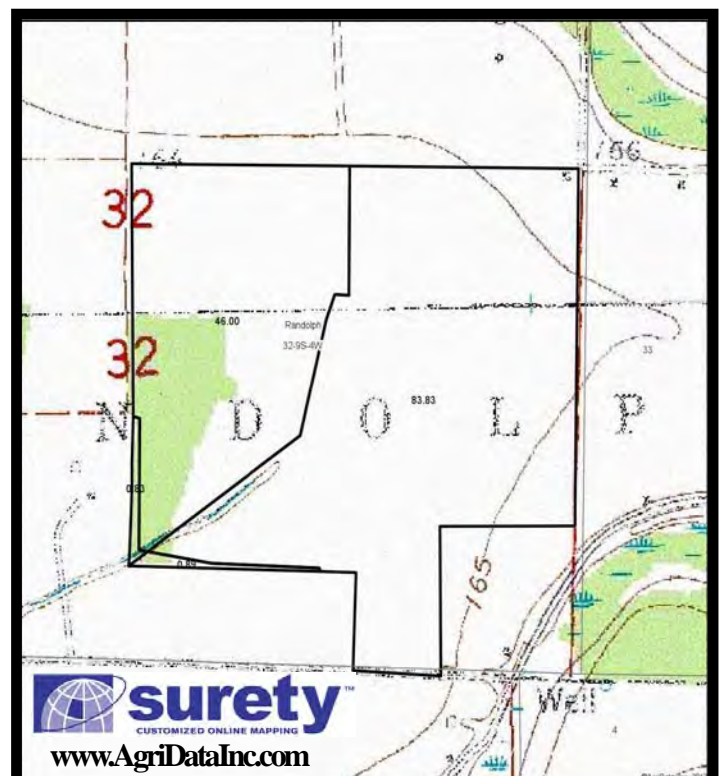
www.capitalag.com

Tract 4 - Aerial, Soils and Topography Maps



For more information contact:

Murry McClintock
Tel: (662) 363-1801
Agent for Seller



Banks Farm

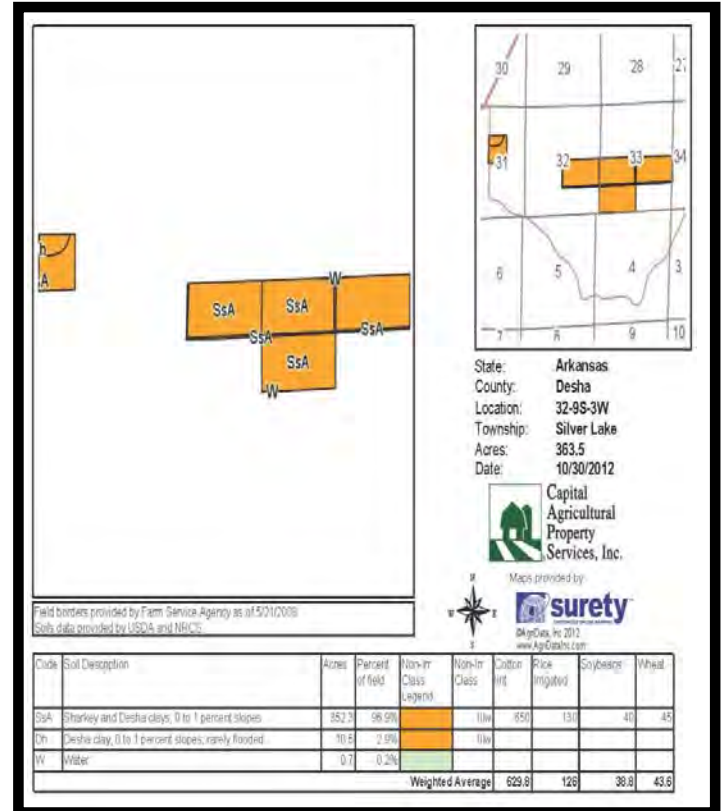
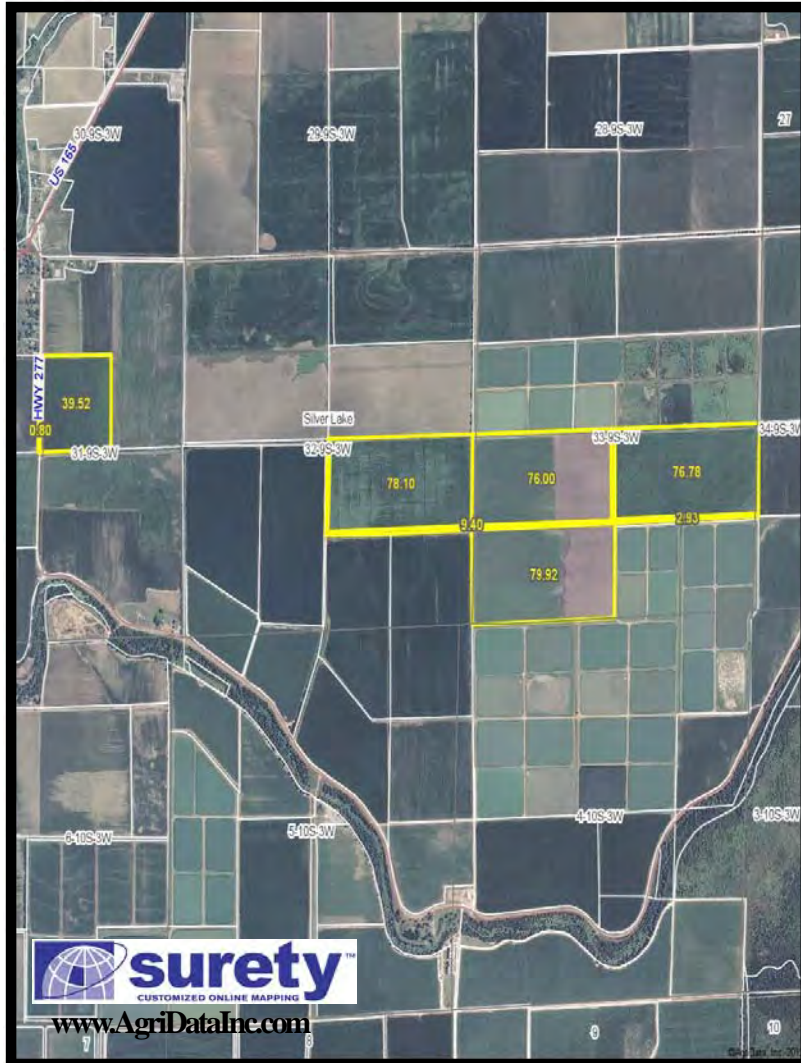
2,420± acres
Desha County, AR



Capital
Agricultural
Property
Services, Inc.
901-756-5367

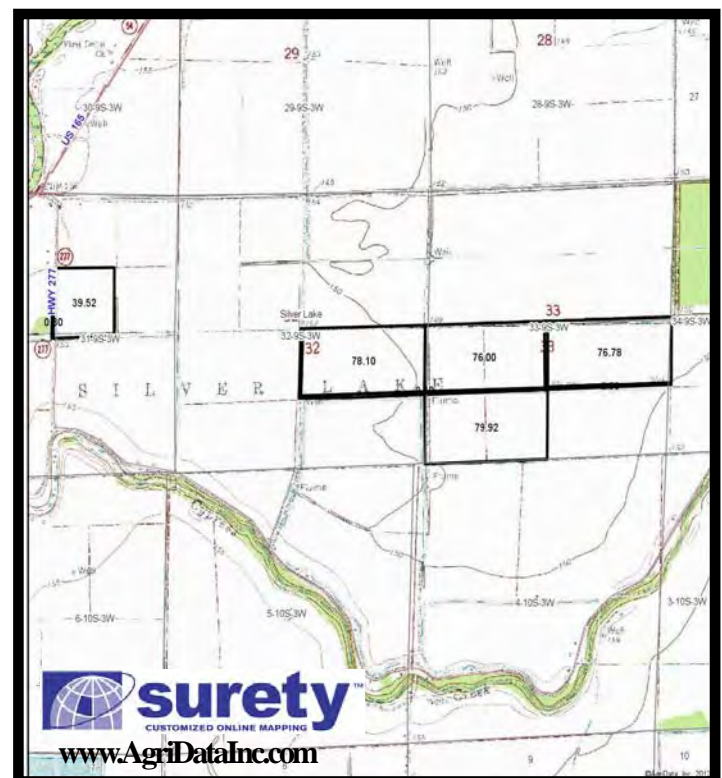
www.capitalag.com

Tract 5 - Aerial, Soils and Topography Maps



For more information contact:

Murry McClintock
Tel: (662) 363-1801
Agent for Seller



Banks Farm

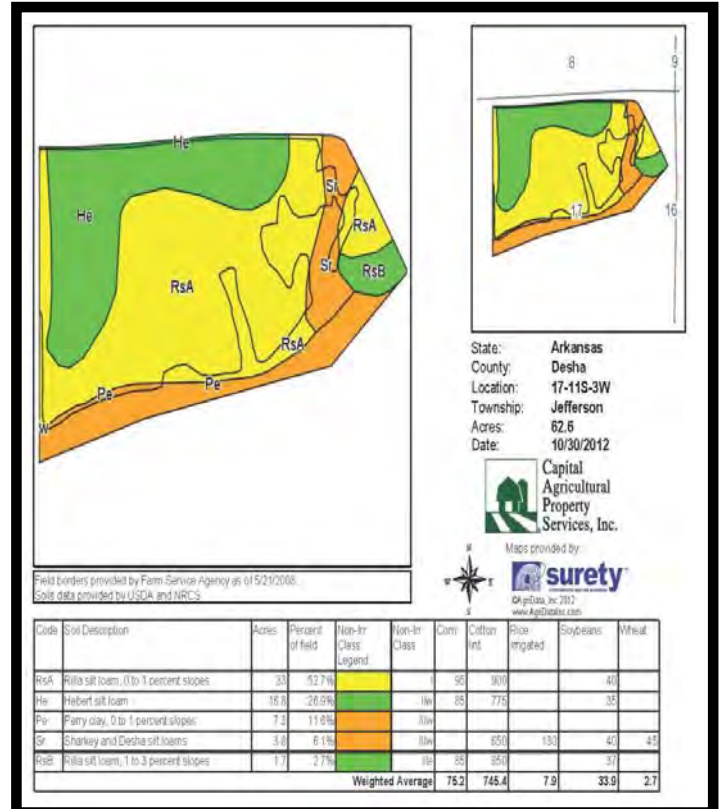
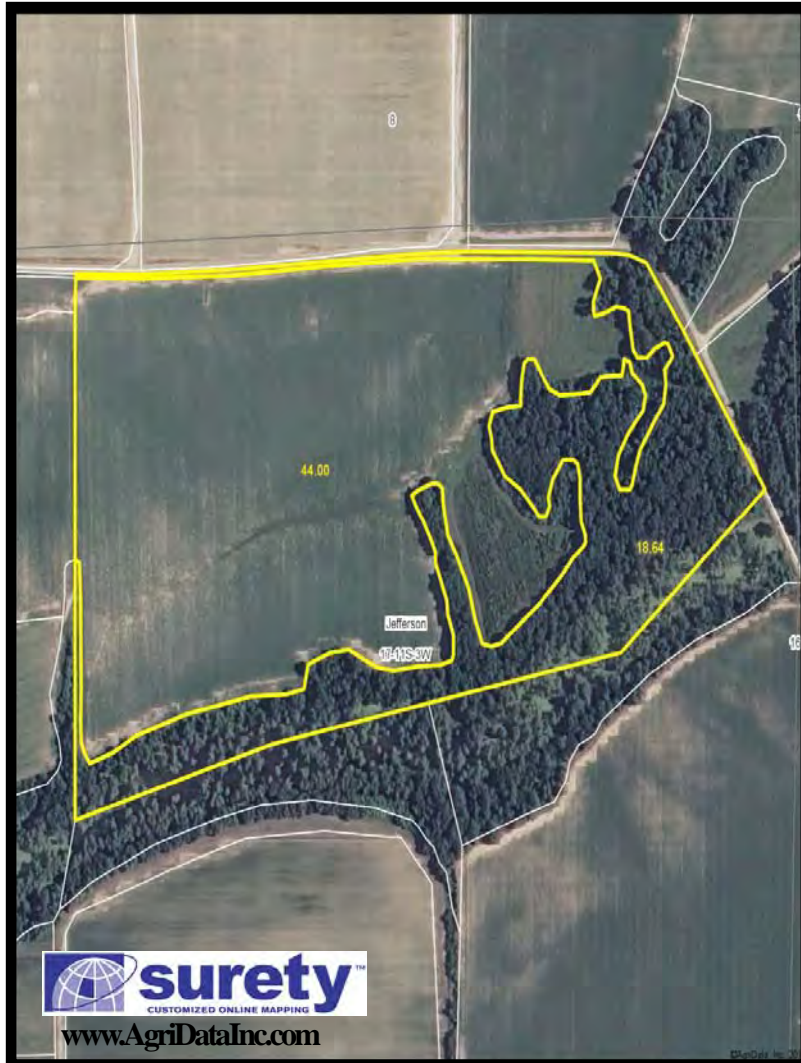
2,420± acres
Desha County, AR



Capital
Agricultural
Property
Services, Inc.
901-756-5367

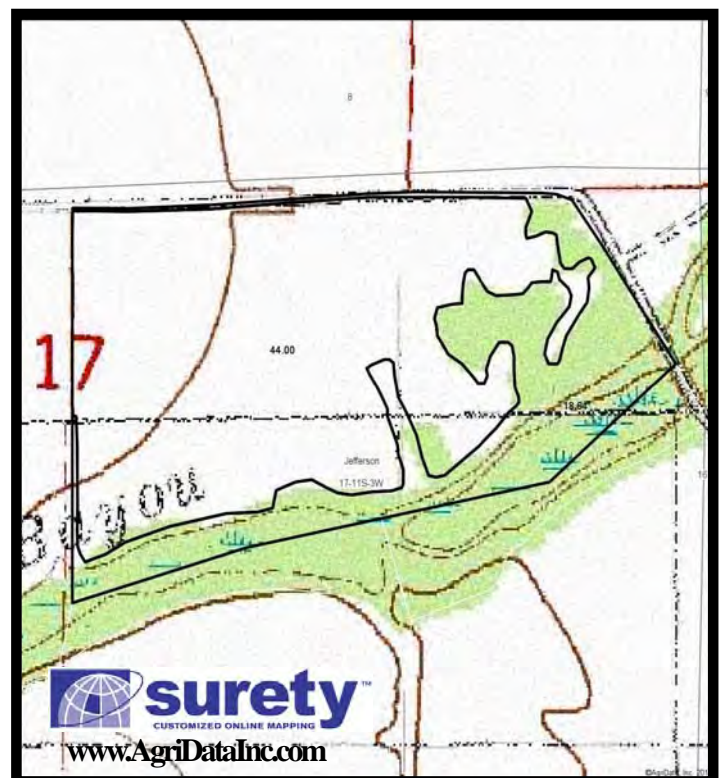
www.capitalag.com

Tract 6 - Aerial, Soils and Topography Maps



For more information contact:

Murry McClintock
Tel: (662) 363-1801
Agent for Seller



Banks Farm

2,420± acres
Desha County, AR



Capital
Agricultural
Property
Services, Inc.
901-756-5367

www.capitalag.com



For more information contact:

Murry McClintock
Tel: (662) 363-1801
Agent for Seller