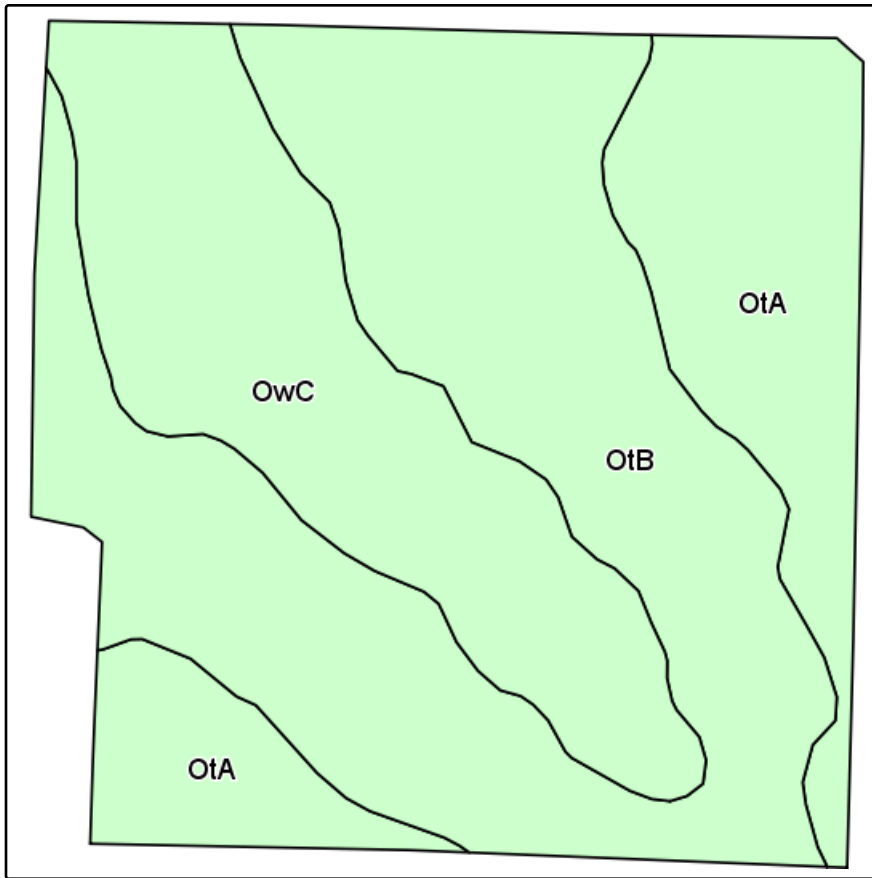
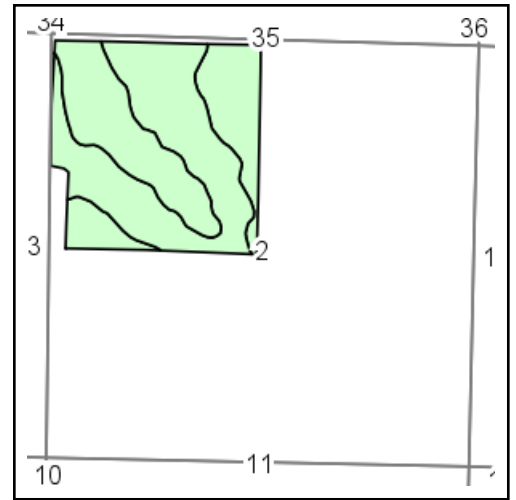


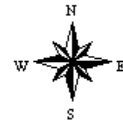
# Soils Map



Field borders provided by Farm Service Agency as of 5/21/2008.  
Soils data provided by USDA and NRCS.



State: **South Dakota**  
County: **Haakon**  
Location: **2-3N-24E**  
Township: **East Haakon**  
Acres: **148.6**  
Date: **10/20/2012**



Maps provided by:



©AgriData, Inc 2012  
www.AgriDataInc.com

Code	Soil Description	Acres	Percent of field	Non-Irr Class	Productivity Index	Alfalfa hay	Cool season grasses	Grain sorghum	Oats	Spring wheat	Winter wheat
OtB	Ottumwa silty clay, 3 to 6 percent slopes	74.8	50.4%	IIIe	57	1.5	2.4	42	42	23	36
OwC	Ottumwa-Lakoma silty clays, 6 to 9 percent slopes	39.8	26.8%	IVe	44	1.2	2	32	32	18	28
OtA	Ottumwa silty clay, 0 to 3 percent slopes	34	22.9%	IIIs	61	1.5	2.5	44	45	25	38
<b>Weighted Average</b>					<b>54.5</b>	<b>1.4</b>	<b>2.3</b>	<b>39.8</b>	<b>40</b>	<b>22.1</b>	<b>34.3</b>