

***Currie Ranch Southwest
11.34 EST acres
787' EST river frontage
520' EST road frontage***

Pedernales

Goehmann Ln

Lone Star Ln

Draper-Smith Ln



CURRIE RANCH SOUTHWEST

© 2012 Google

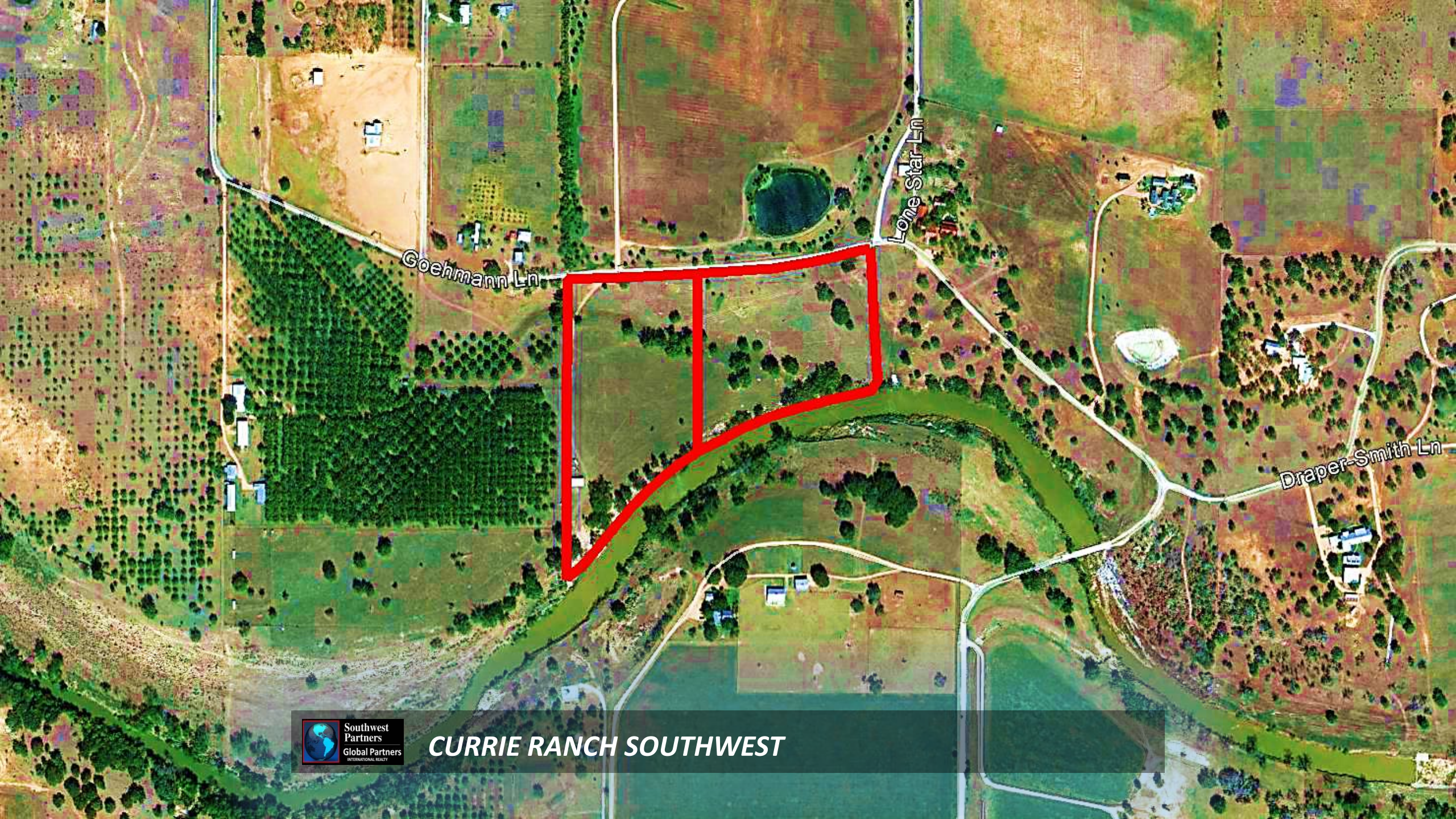
Image USDA Farm Service Agency

Google earth

Goehmann Ln



CURRIE RANCH SOUTHWEST



CURRIE RANCH SOUTHWEST

***Currie Ranch 5 offerings
9.88 to 73.43 acres
Up to 1,577' river frontage
Multiple home sites***

Pedernales

Goehmann Ln

Lone Star Ln

Draper-Smith Ln



CURRIE RANCH SOUTHWEST

© 2012 Google

Image USDA Farm Service Agency

Google earth

Currie Ranch South
21.22 EST acres
1,577' EST river frontage
1,220' EST road frontage

Pedernales

Goehmann Ln

Lone Star Ln

Draper-Smith Ln



CURRIE RANCH SOUTHWEST

© 2012 Google

Image USDA Farm Service Agency

Google earth

Currie Ranch Southeast
9.88 EST acres
790' EST river frontage
700' EST road frontage

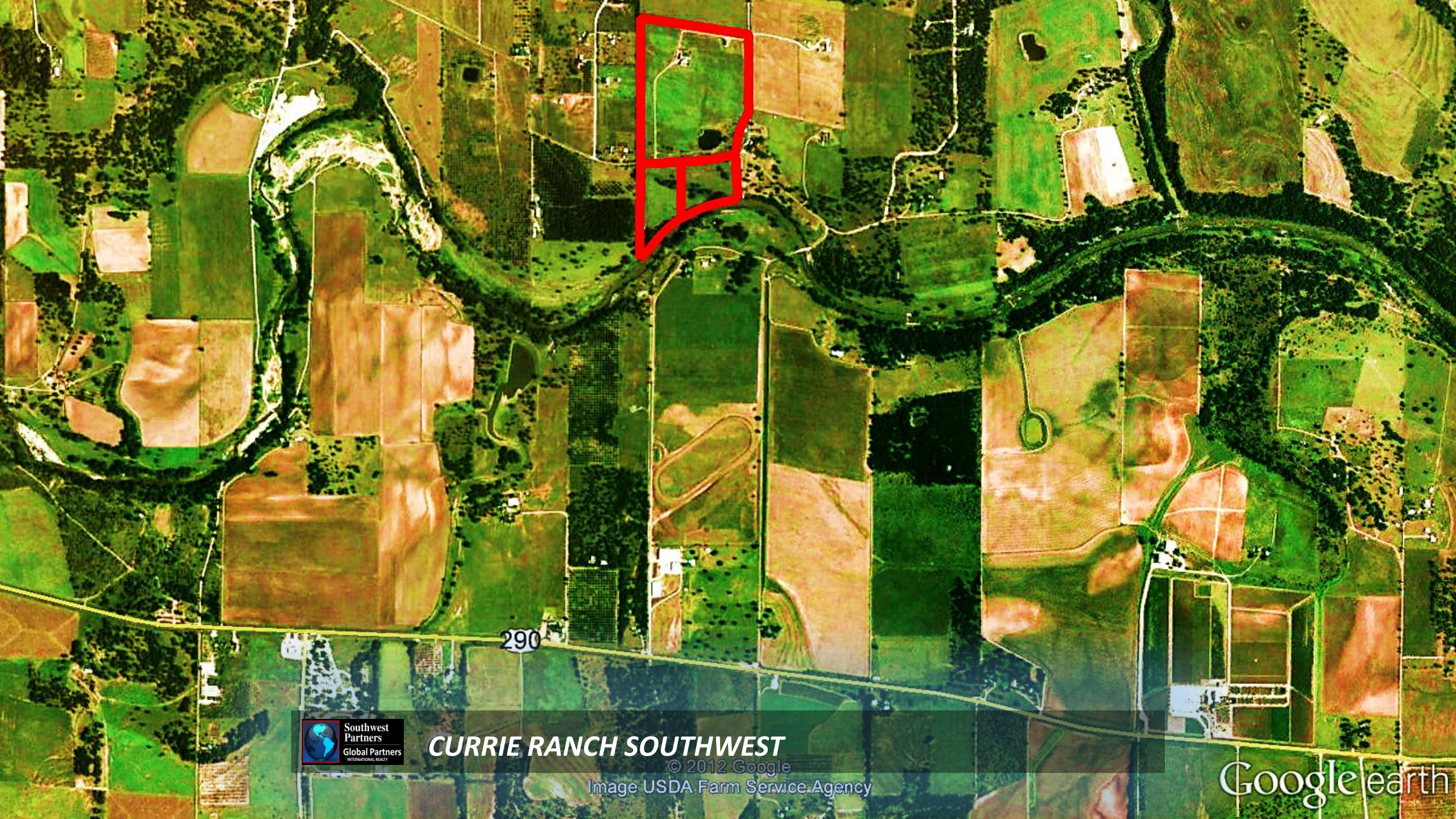


CURRIE RANCH SOUTHWEST

© 2012 Google

Image USDA Farm Service Agency

Google earth



290



CURRIE RANCH SOUTHWEST

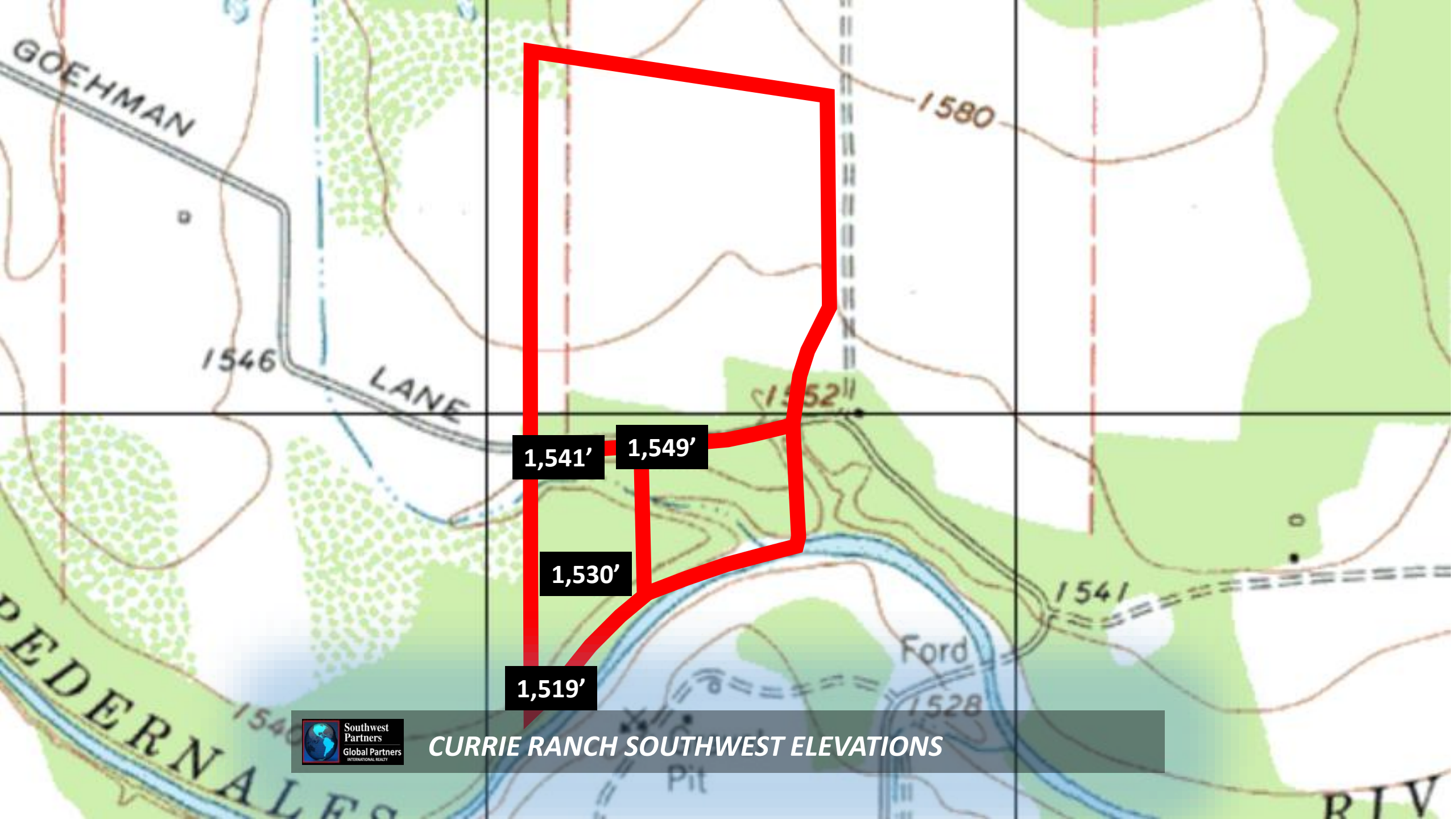
© 2012 Google

Image USDA Farm Service Agency

Google earth



CURRIE RANCH SOUTHWEST TOPO



1,541'

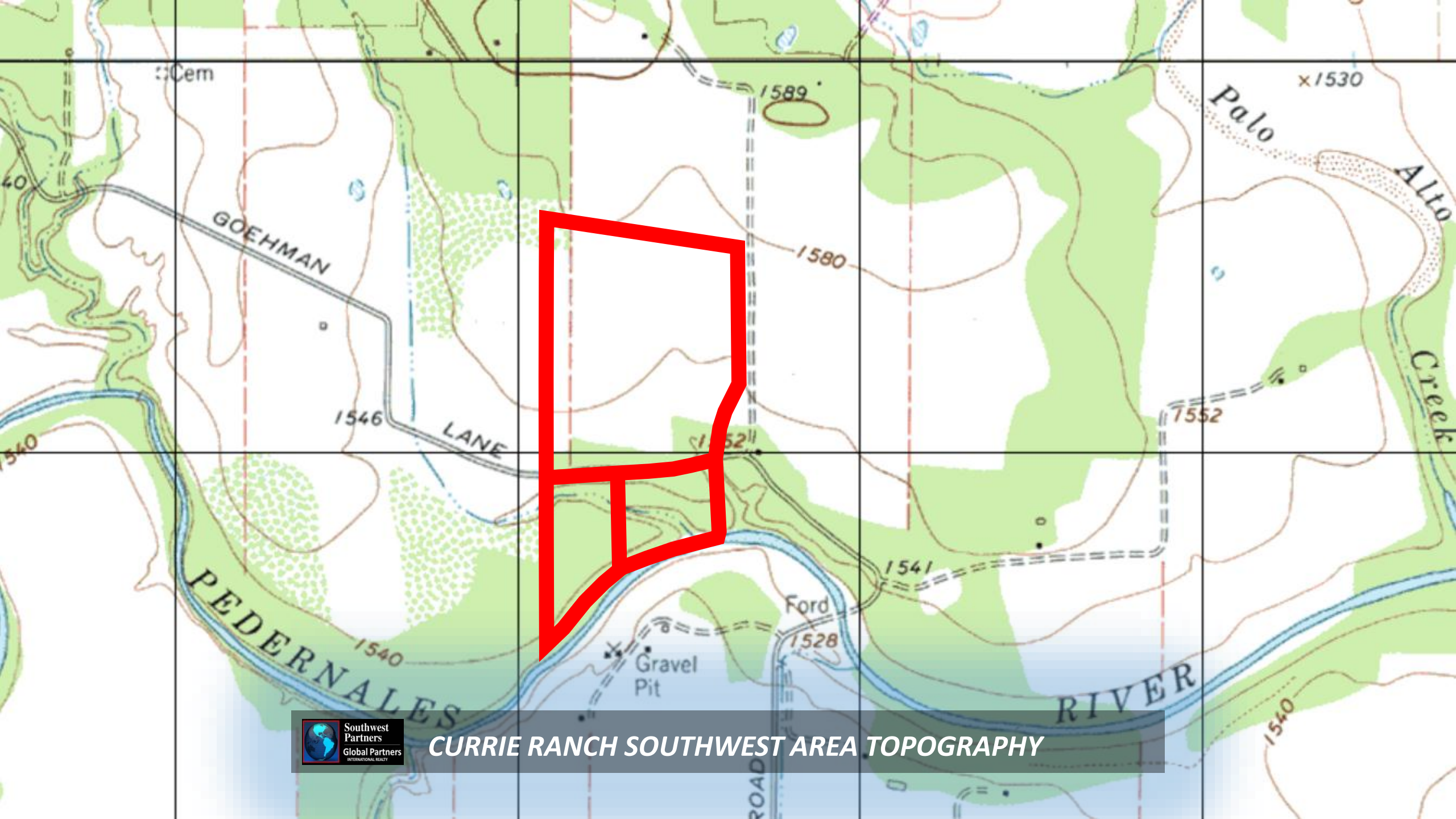
1,549'

1,530'

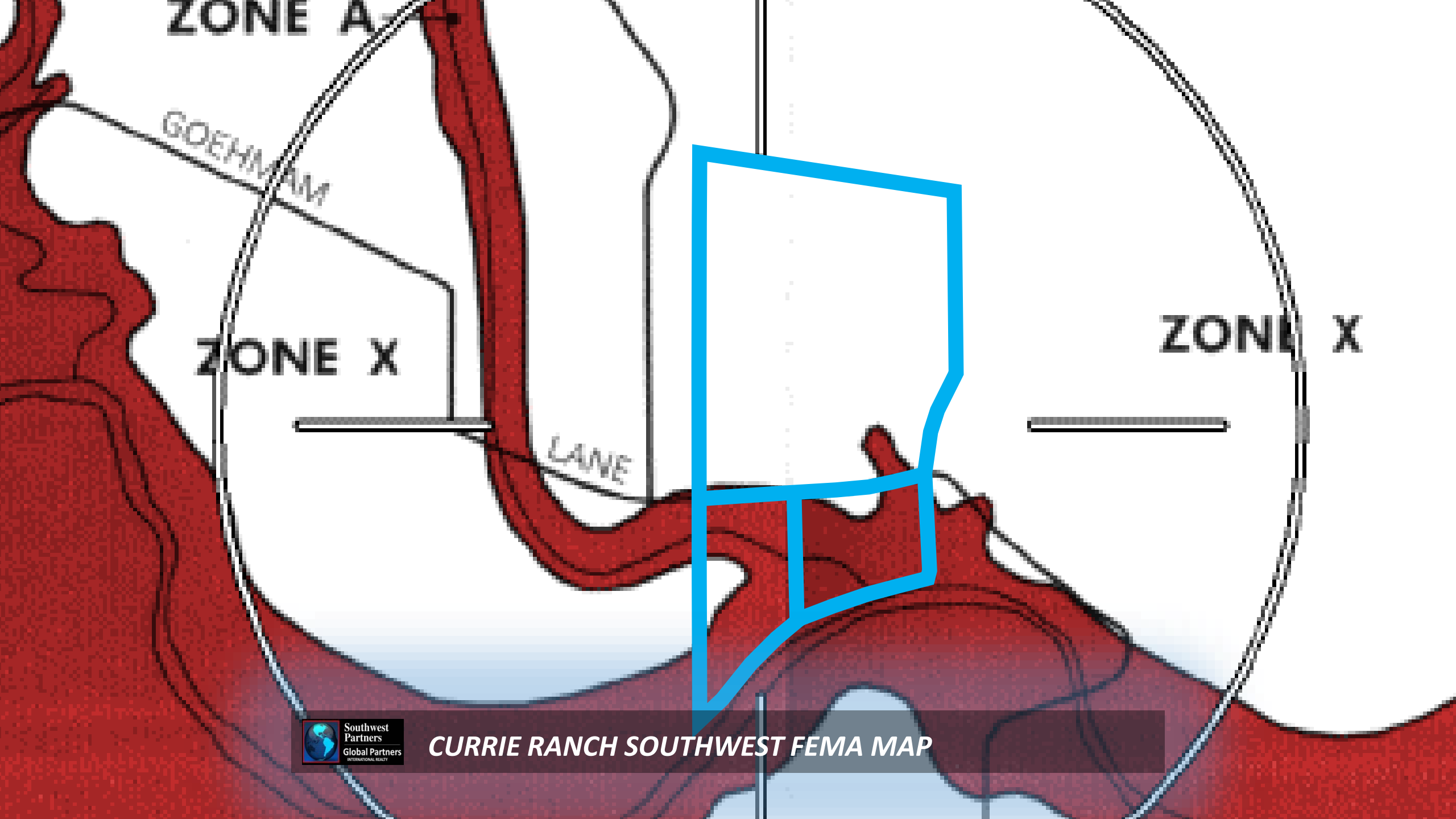
1,519'



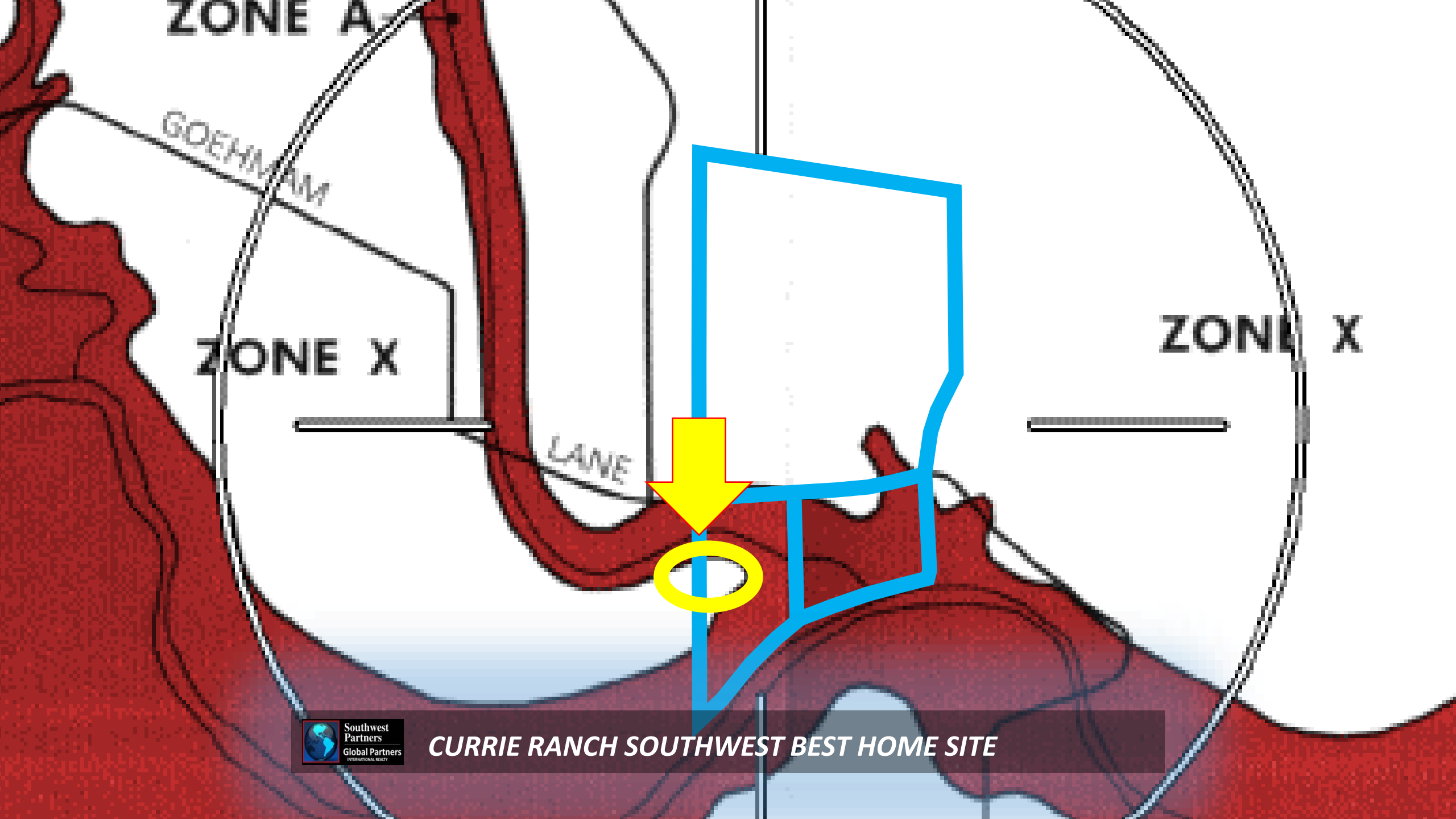
CURRIE RANCH SOUTHWEST ELEVATIONS



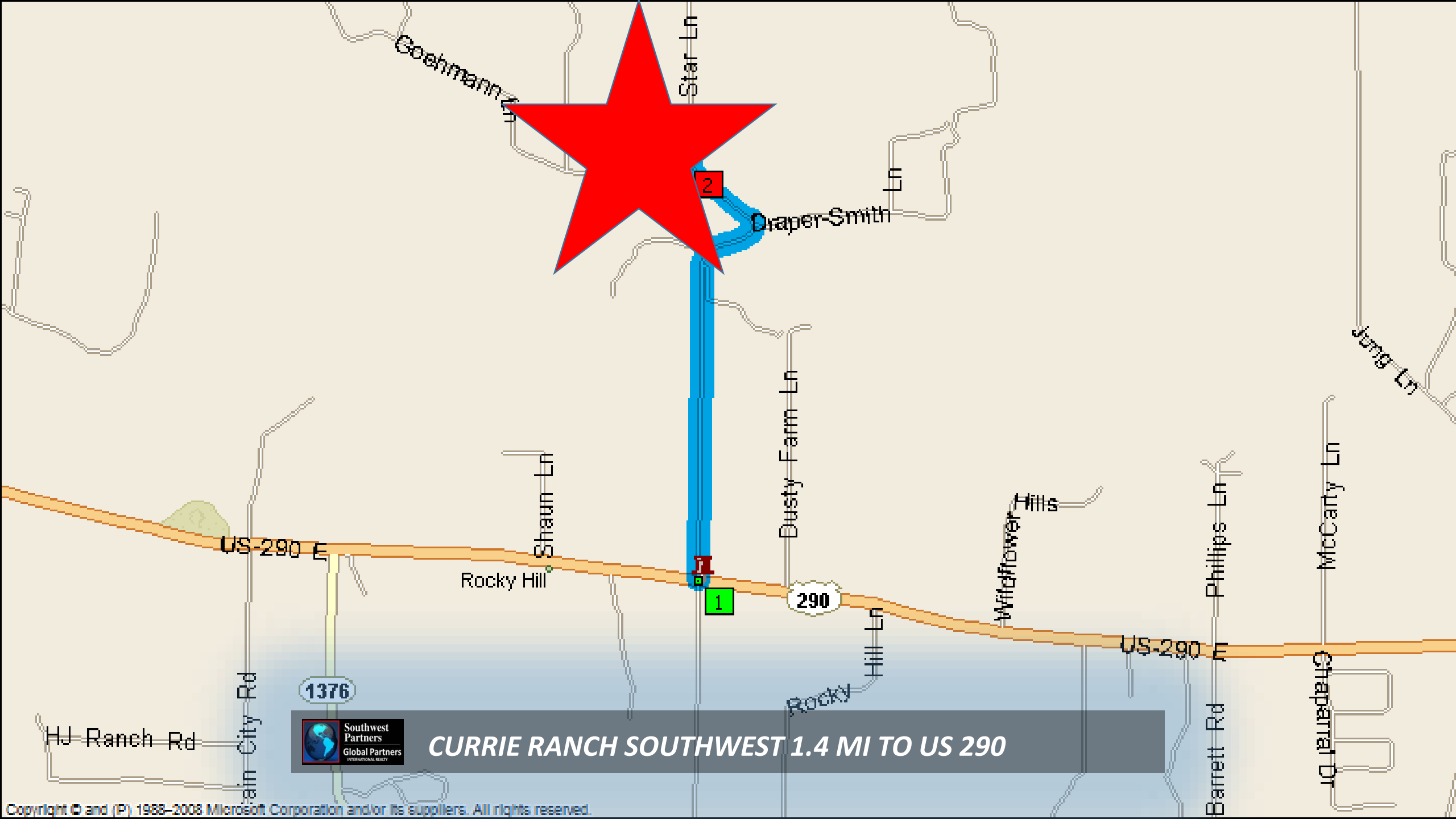
CURRIE RANCH SOUTHWEST AREA TOPOGRAPHY



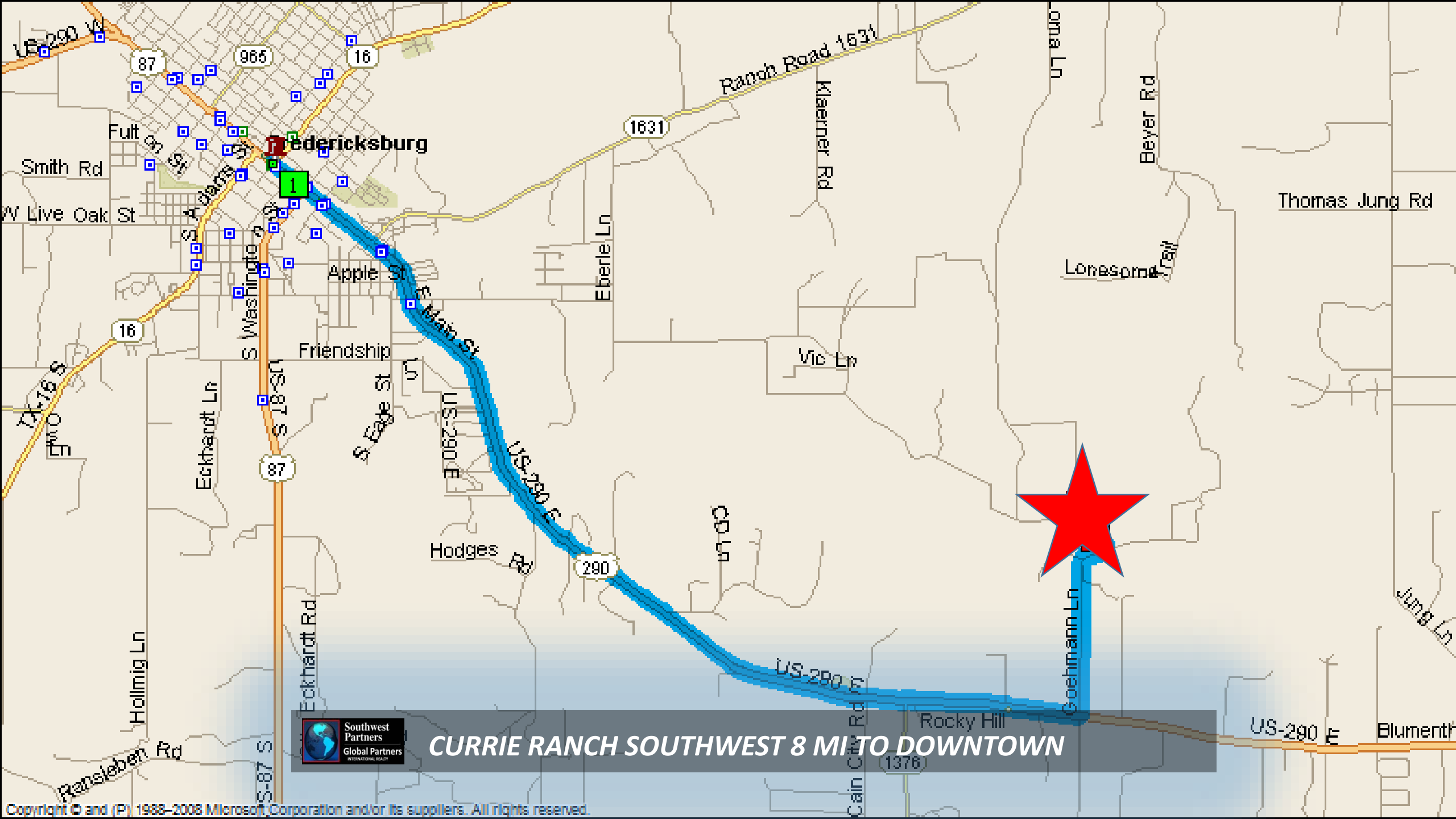
CURRIE RANCH SOUTHWEST FEMA MAP



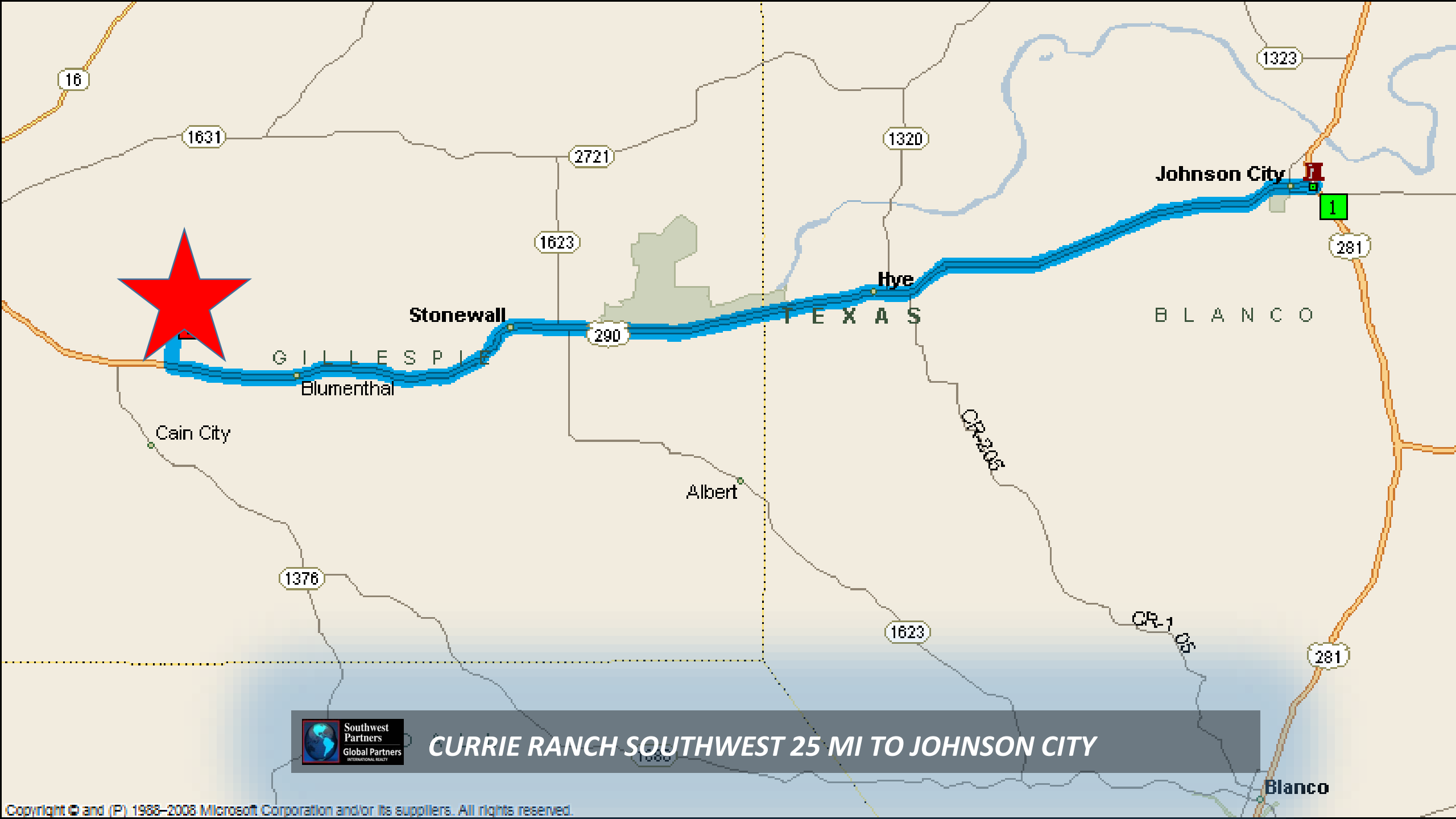
CURRIE RANCH SOUTHWEST BEST HOME SITE



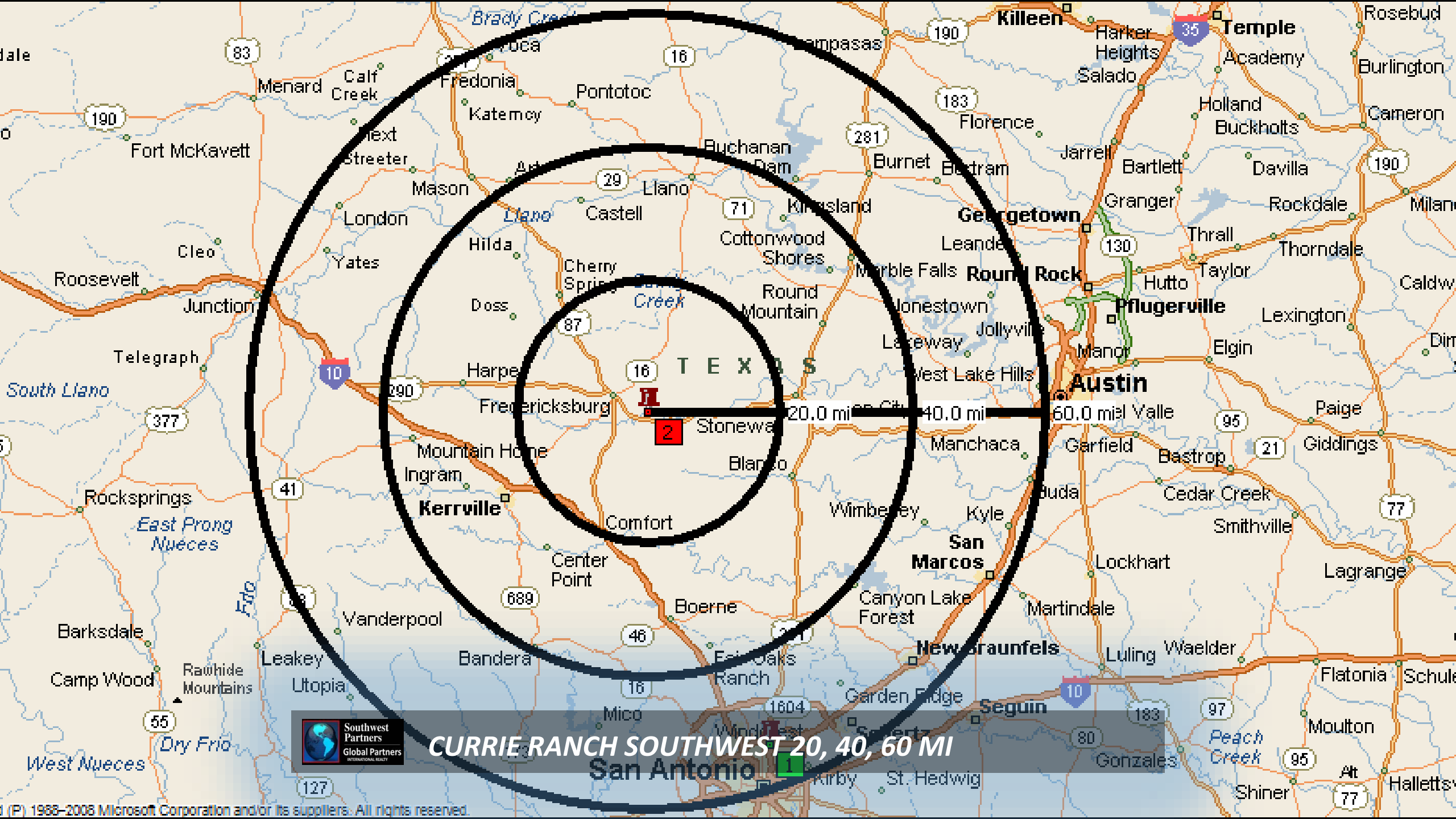
CURRIE RANCH SOUTHWEST 1.4 MI TO US 290



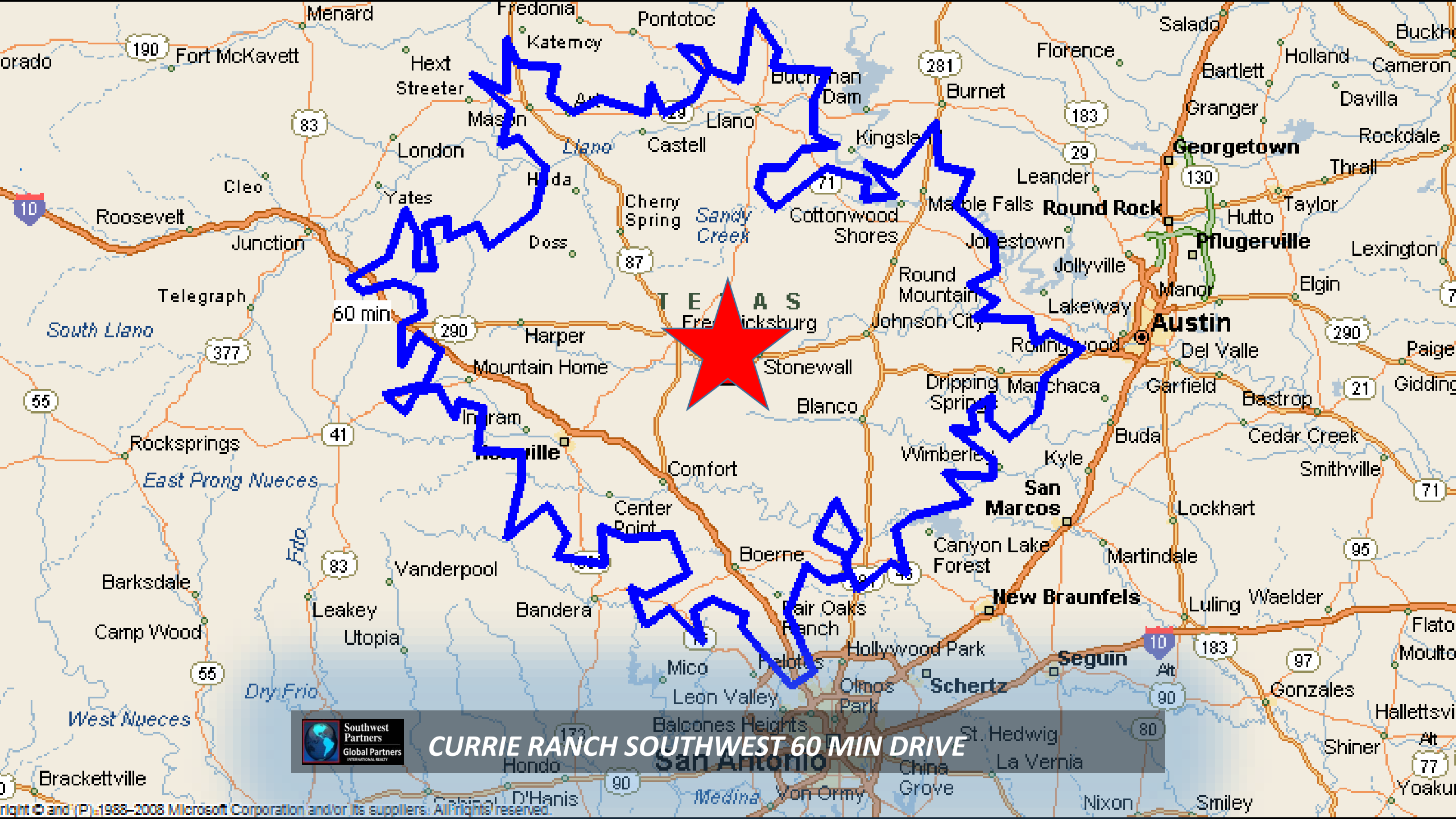
CURRIE RANCH SOUTHWEST 8 MI TO DOWNTOWN



CURRIE RANCH SOUTHWEST 25 MI TO JOHNSON CITY



CURRIE RANCH SOUTHWEST 20, 40, 60 MI
San Antonio



CURRIE RANCH SOUTHWEST 60 MIN DRIVE



CURRIE RANCH SOUTHWEST 90 MIN DRIVE



CURRIE RANCH SOUTHWEST TEXAS MAP



**Southwest
Partners**

Global Partners
INTERNATIONAL REALTY

Sherry “Princess” Cohen, CNE

HILL COUNTRY TEAM LEADER, REALTOR® RAINMAKER®

C: 800.948.1537

princess@swpre.com

O: 979.421.9996

swpre.com