

Currie Ranch Estate
6,422 SF Main Home
Guest Home & Pool
52.55 acres

Pedernales Estates Rd
Goehmann Ln

Lone Star Ln



CURRIE RANCH ESTATE

***Currie Ranch 5 offerings
9.88 to 73.43 acres
Up to 1,577' river frontage
Multiple home sites***

Pedernales

Goehmann Ln

Lone Star Ln

Draper-Smith Ln

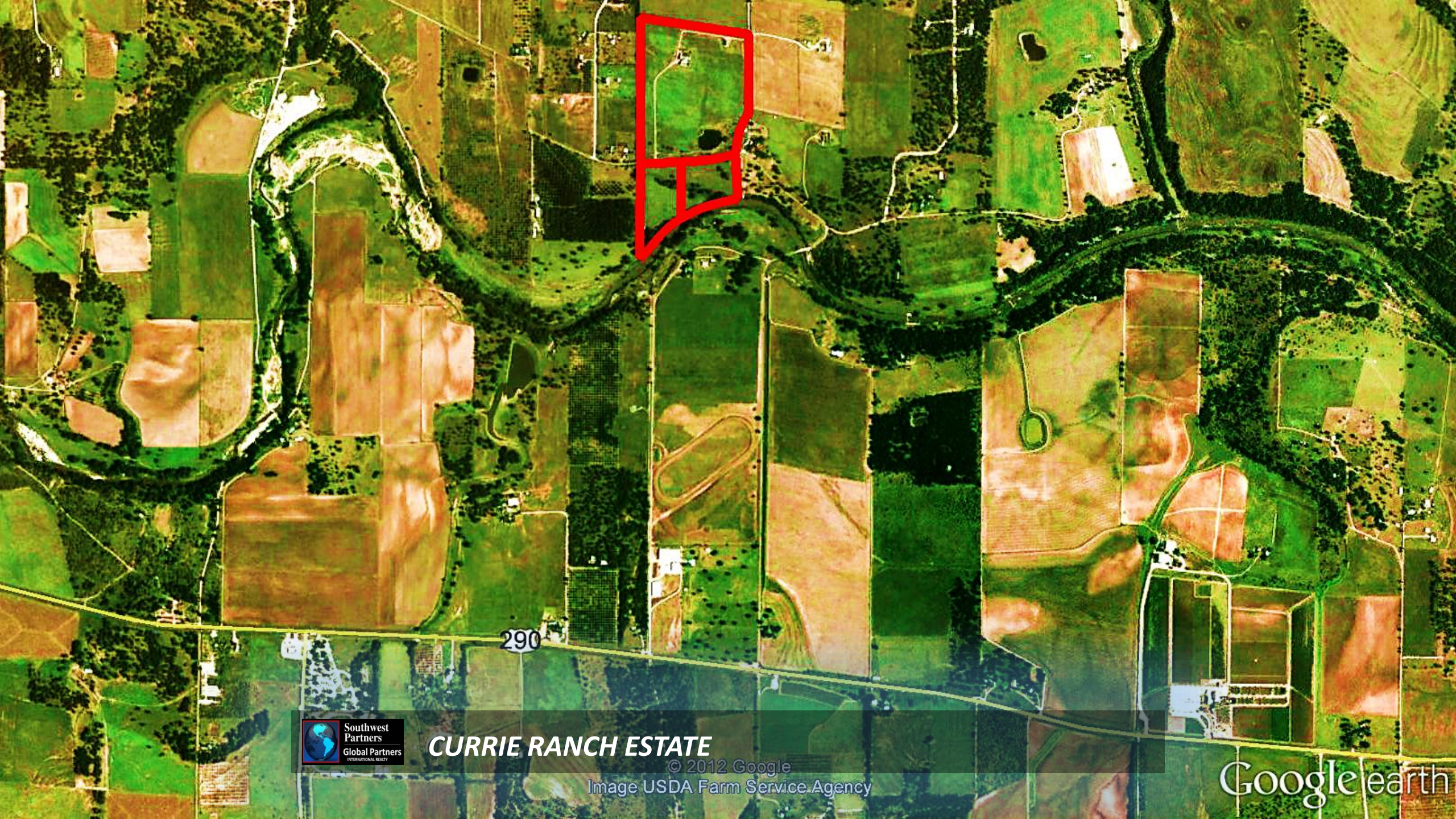


CURRIE RANCH ESTATE

© 2012 Google

Image USDA Farm Service Agency

Google earth



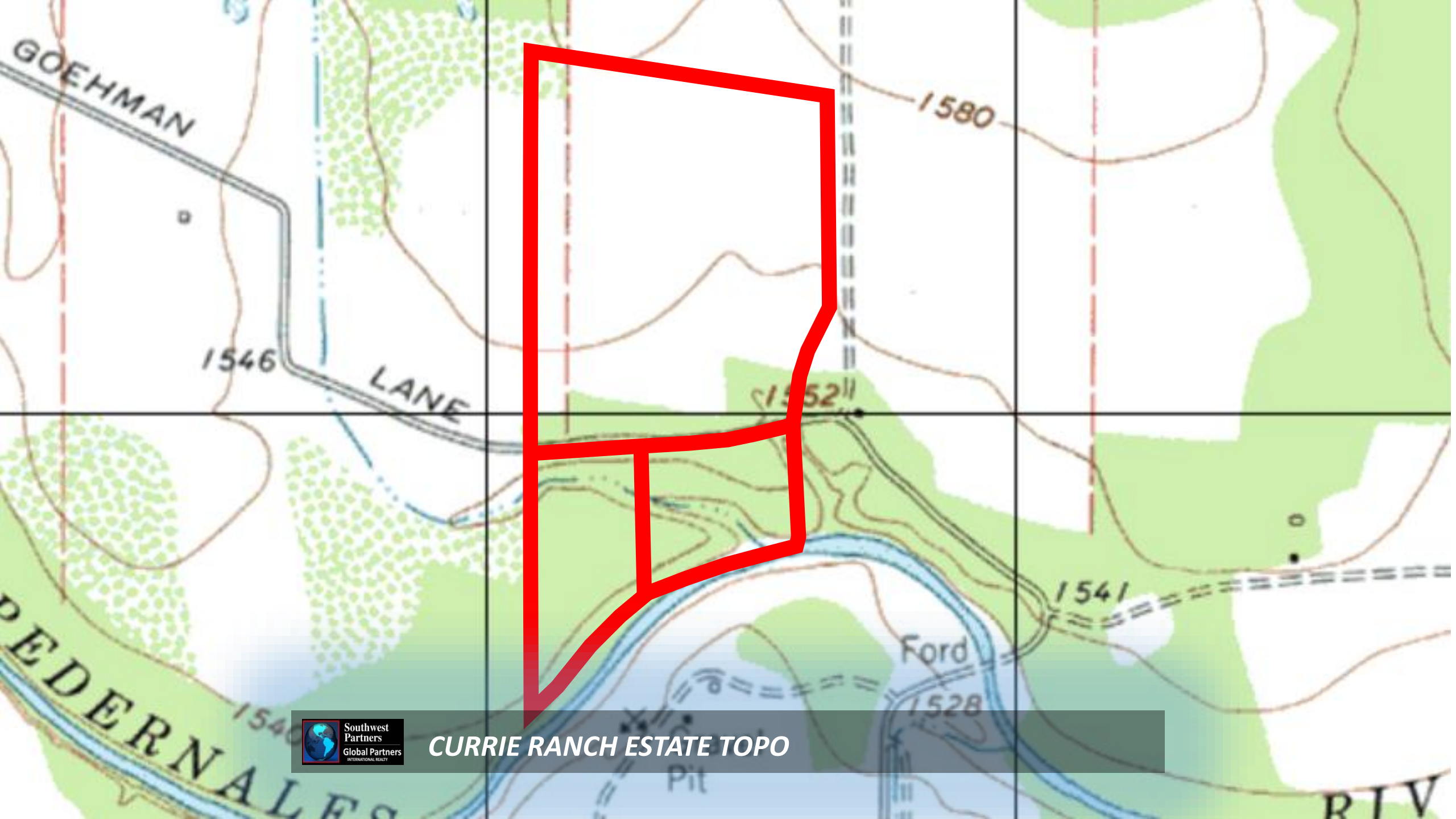
290



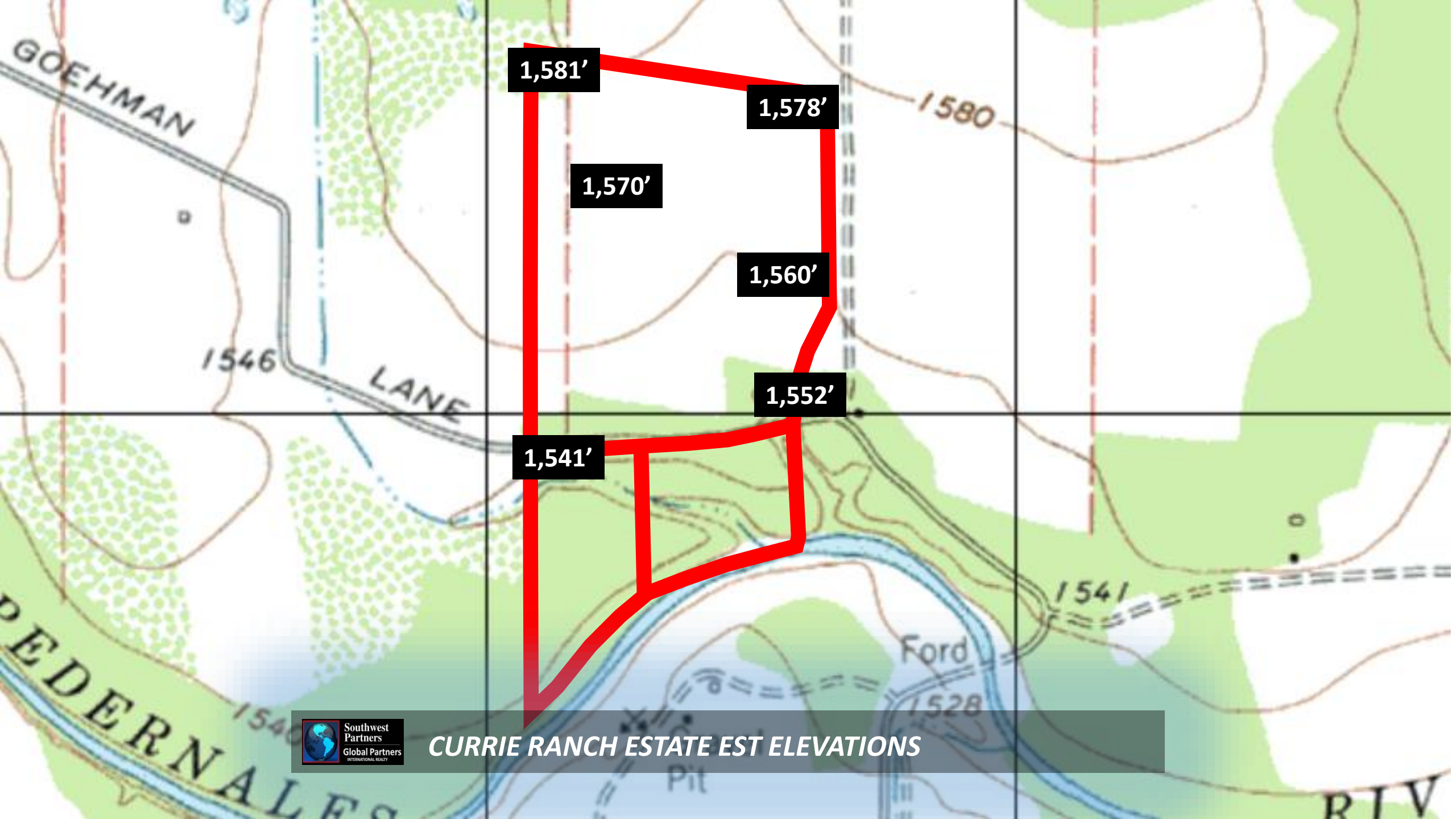
CURRIE RANCH ESTATE

© 2012 Google
Image USDA Farm Service Agency

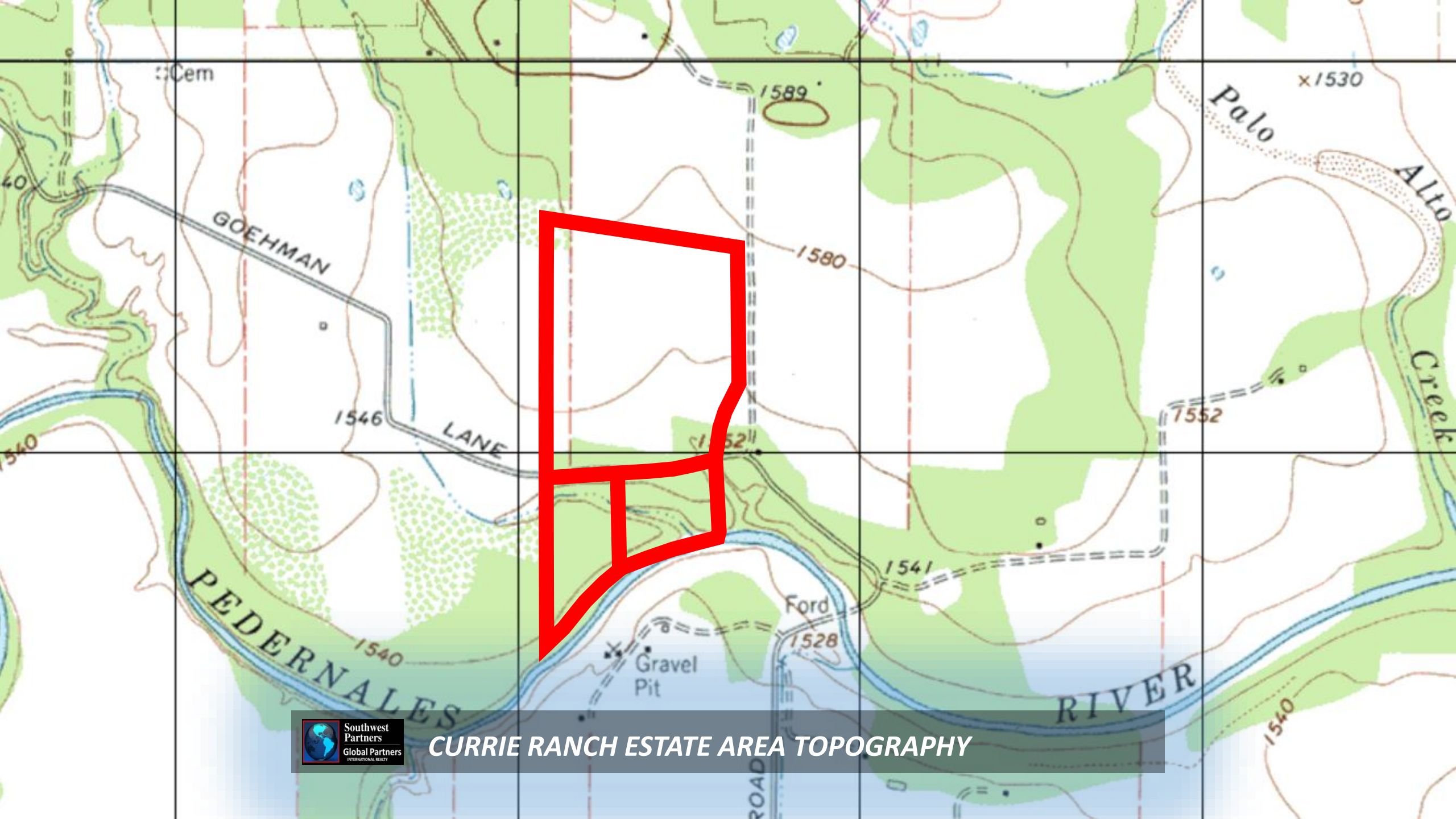
Google earth



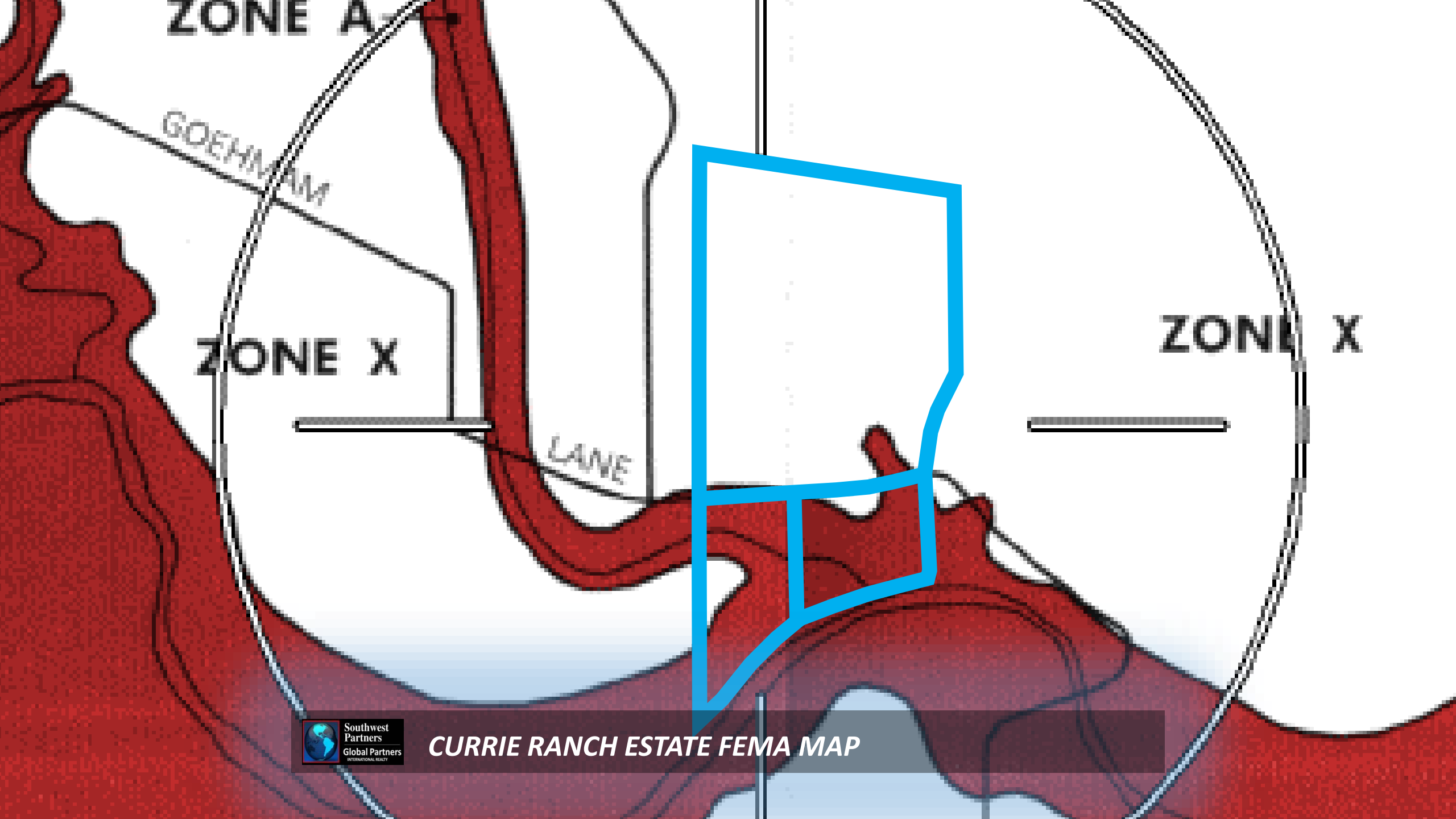
CURRIE RANCH ESTATE TOPO



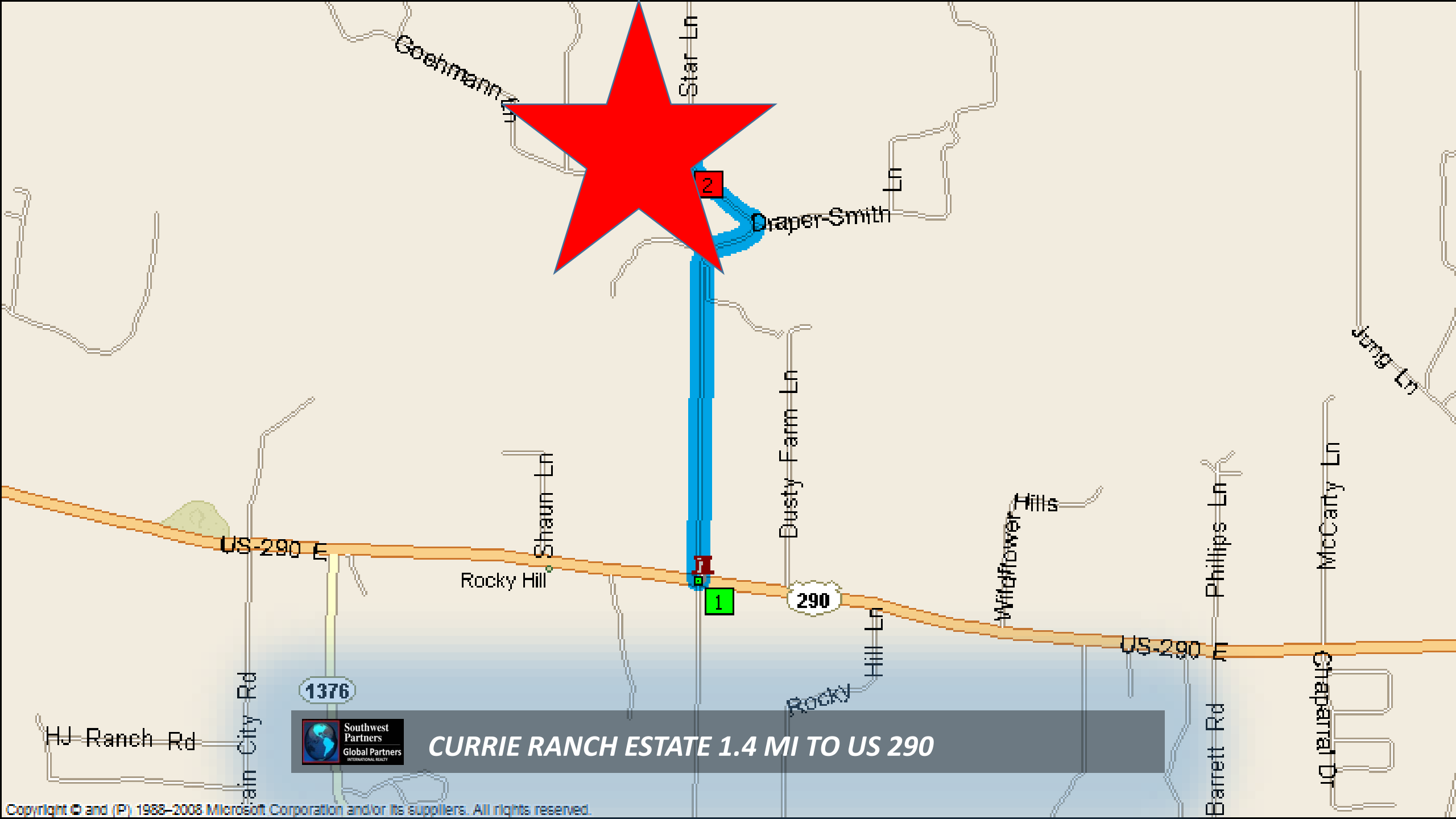
CURRIE RANCH ESTATE EST ELEVATIONS



CURRIE RANCH ESTATE AREA TOPOGRAPHY



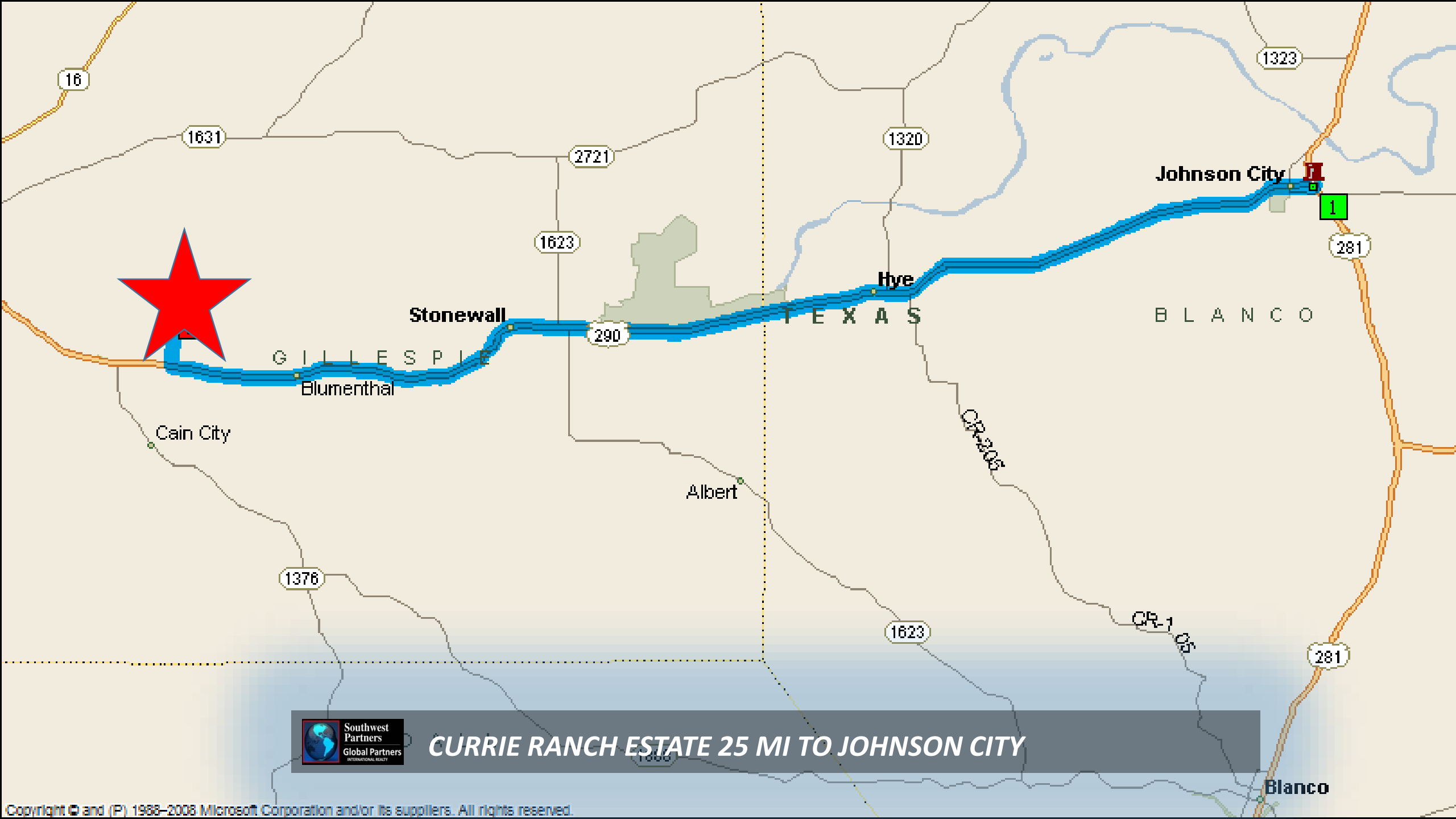
CURRIE RANCH ESTATE FEMA MAP



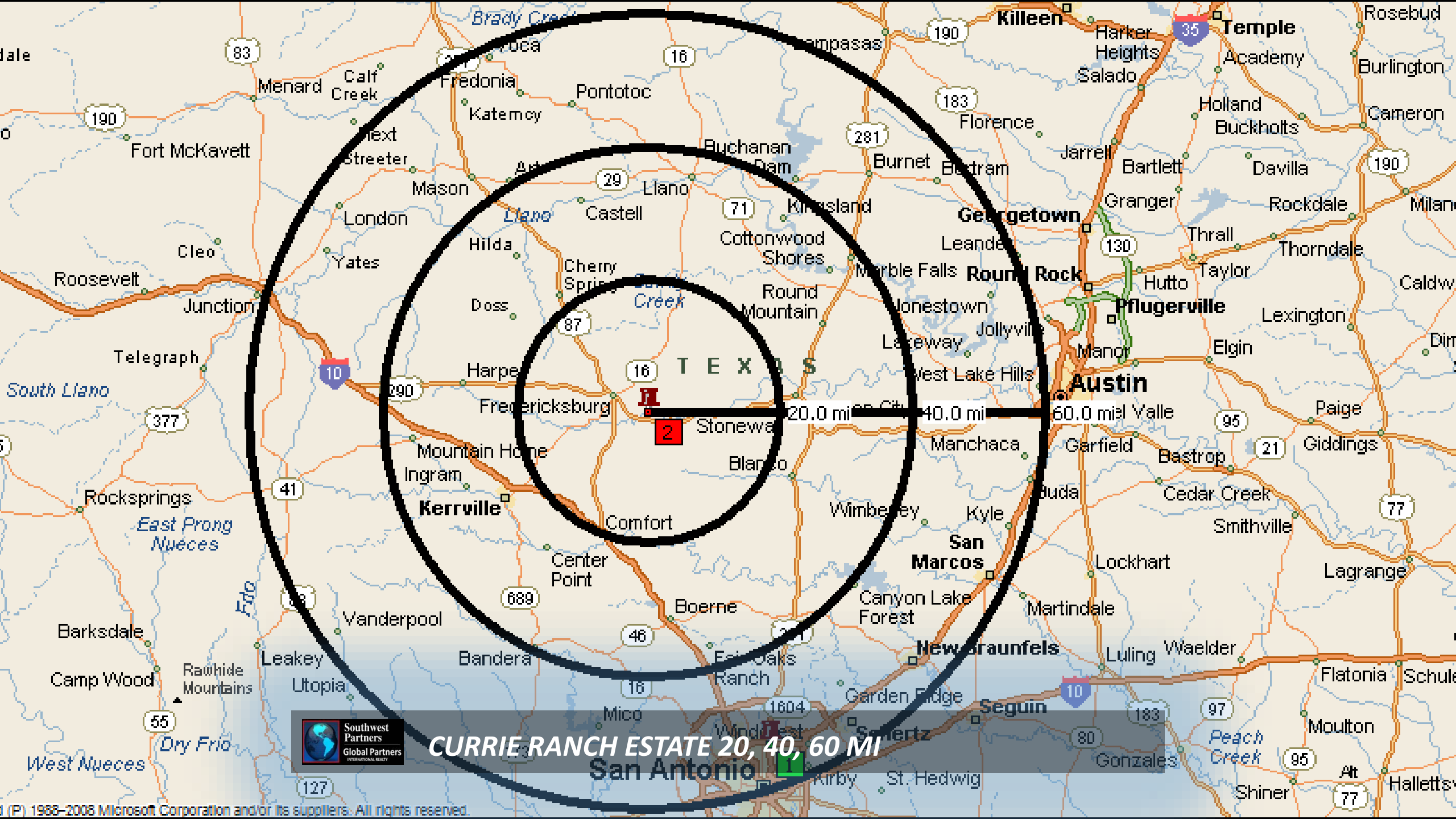
CURRIE RANCH ESTATE 1.4 MI TO US 290



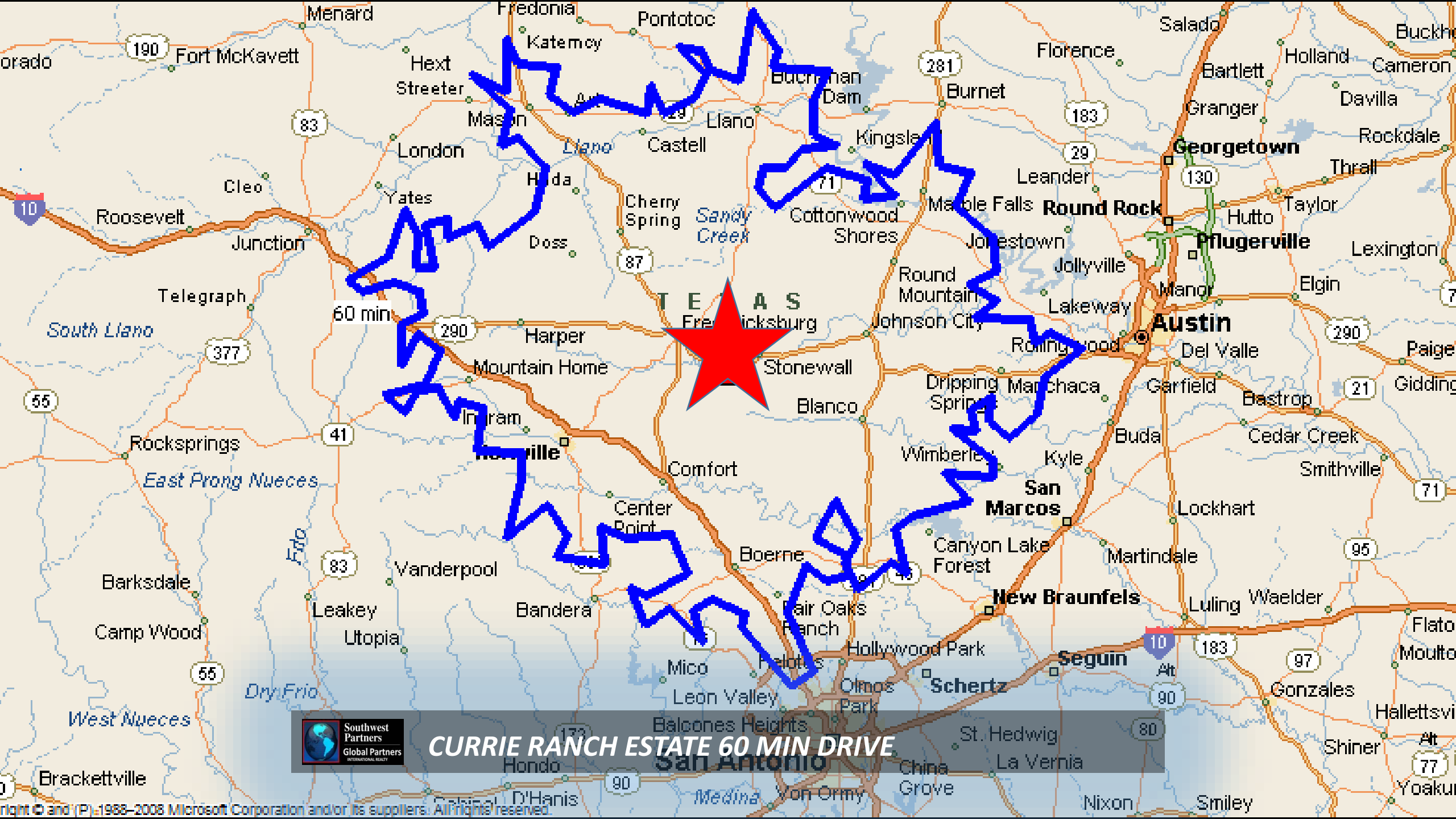
Copyright © and (P) 1988–2008 Microsoft Corporation and/or its suppliers. All rights reserved.



CURRIE RANCH ESTATE 25 MI TO JOHNSON CITY



CURRIE RANCH ESTATE 20, 40, 60 MI
San Antonio



CURRIE RANCH ESTATE 60 MIN DRIVE



UNITED STATES

TEXAS

90 min

Fredericksburg

Austin

San Antonio

Houston



CURRIE ESTATE 90 MIN DRIVE



CURRIE RANCH ESTATE TEXAS MAP



**Southwest
Partners**

Global Partners
INTERNATIONAL REALTY

Sherry “Princess” Cohen, CNE

HILL COUNTRY TEAM LEADER, REALTOR® RAINMAKER®

C: 800.948.1537

princess@swpre.com

O: 979.421.9996

swpre.com