

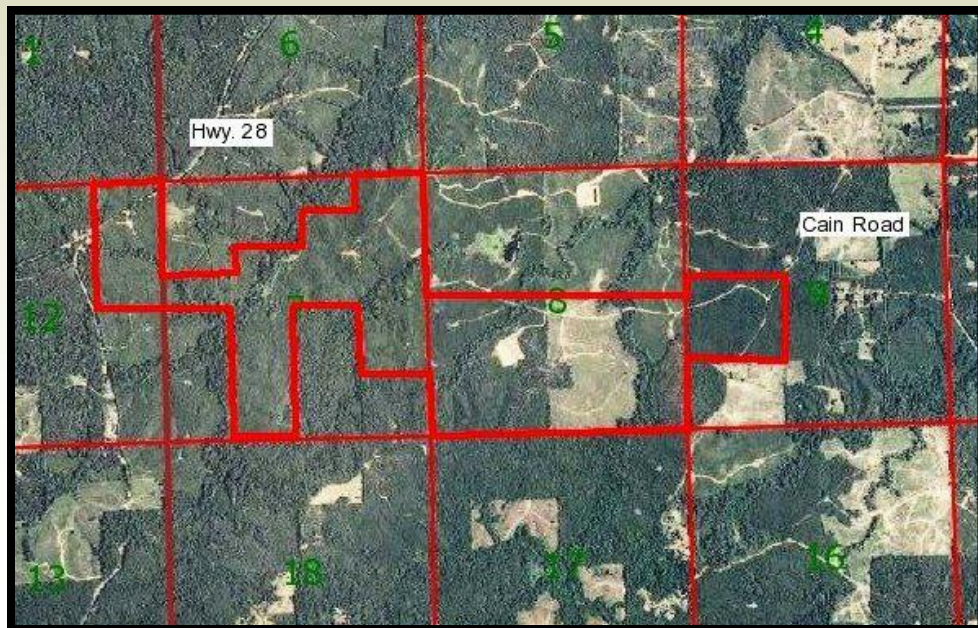


Copiah 880

880 Acres +/-
Copiah County, MS

Sartain's Heritage Properties
106 First Choice Drive
Madison, MS 39110
601.856.2720
Fax: 601.853.6765
www.SartainsHeritage.com

CONTACT:
J. PARKER SARTAIN
601.506.2398
psartain@sartainsheritage.com



880 acres located 45 miles south of Jackson and 11 miles west of Hazlehurst Exit 61, with frontage on Hwy. 28 on the west and Cain Road on the east. This property is a part of the historic Kaywood Plantation and Brown's Wells Resort and Spa. The professionally managed timber asset contains various age pines from 2 to 15 year old and approximately 120 acres of hardwood SMZ's and well maintained interior woods roads with the terrain ranging from hills to large flat bottoms along Valley Creek and Caney Creek.

Western Copiah County is well known for great whitetail hunting with numerous 140 to 160 class bucks entered in Magnolia Records, as well as home to strutting long beards. This property is an offers both hunting and timber income potential for the investment minded sportsman.

\$2,112,000.00 / \$2400.00 per acre

