

HAYS COUNTY, TX - WIMBERLEY RANCH 150 AC +/-

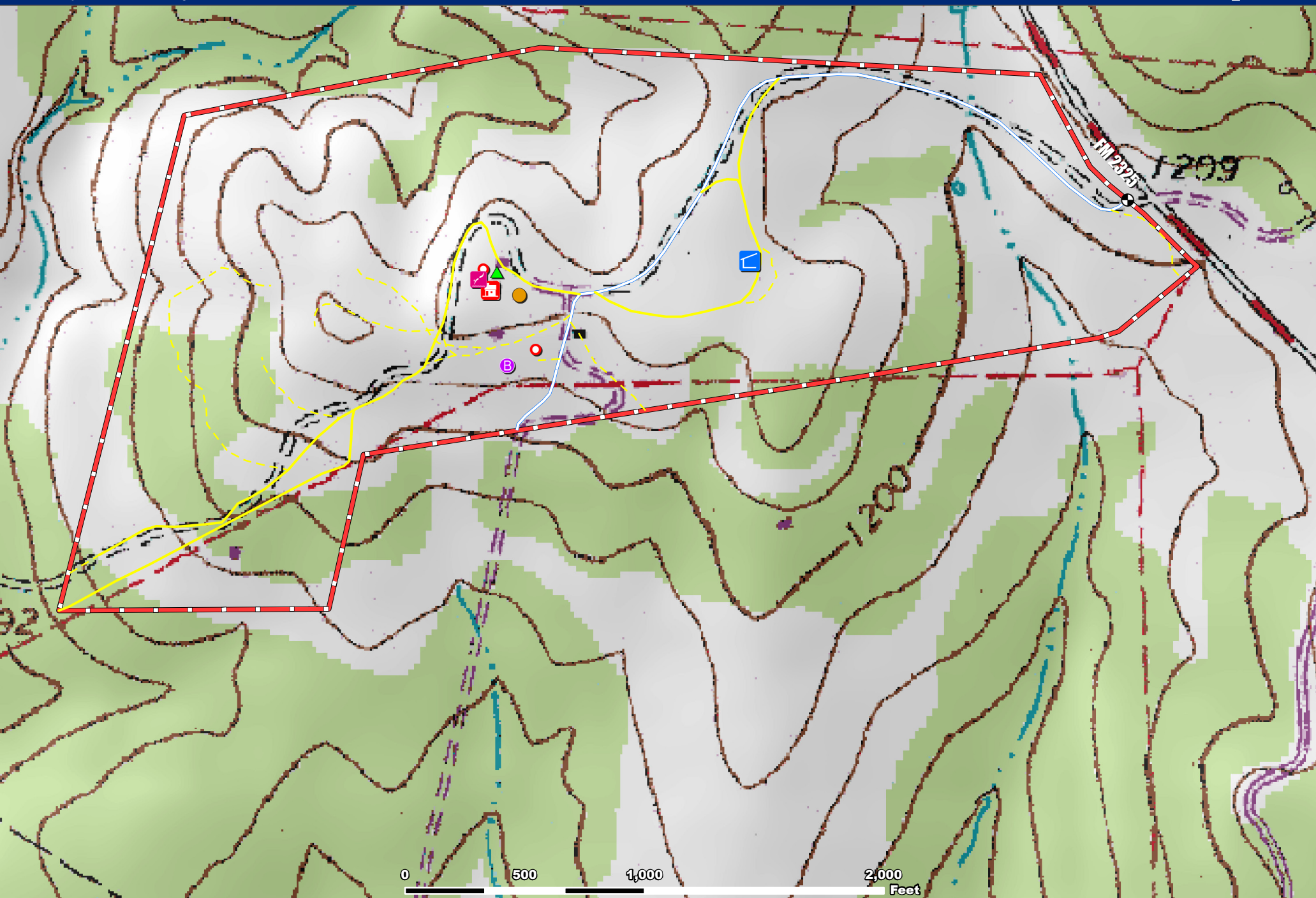
Dave Murray

9442N. Capital of Texas Hwy, Plaza Two, Ste. 150 Austin, TX 78759

Tel: (512) 751-6060

www.dmtx.com

COLDWELL
BANKER



Date: May 7, 2012
Scale: 1: 6,136
Data Source: TNIRIS

Gate



Main House



Basketball Court



Pool



Garage



Shed



Guest House



Barn

Main Road

Improved Roads

Secondary Roads/Trails

Property Boundary



The information contained herein was obtained from sources deemed to be reliable. Frontier GIS makes no warranties or guarantees as to the completeness or accuracy thereof.
512-757-1484 www.frontiergis.com