

NOTICE OF LAND SALE
"Morris Tract" Listing #4347

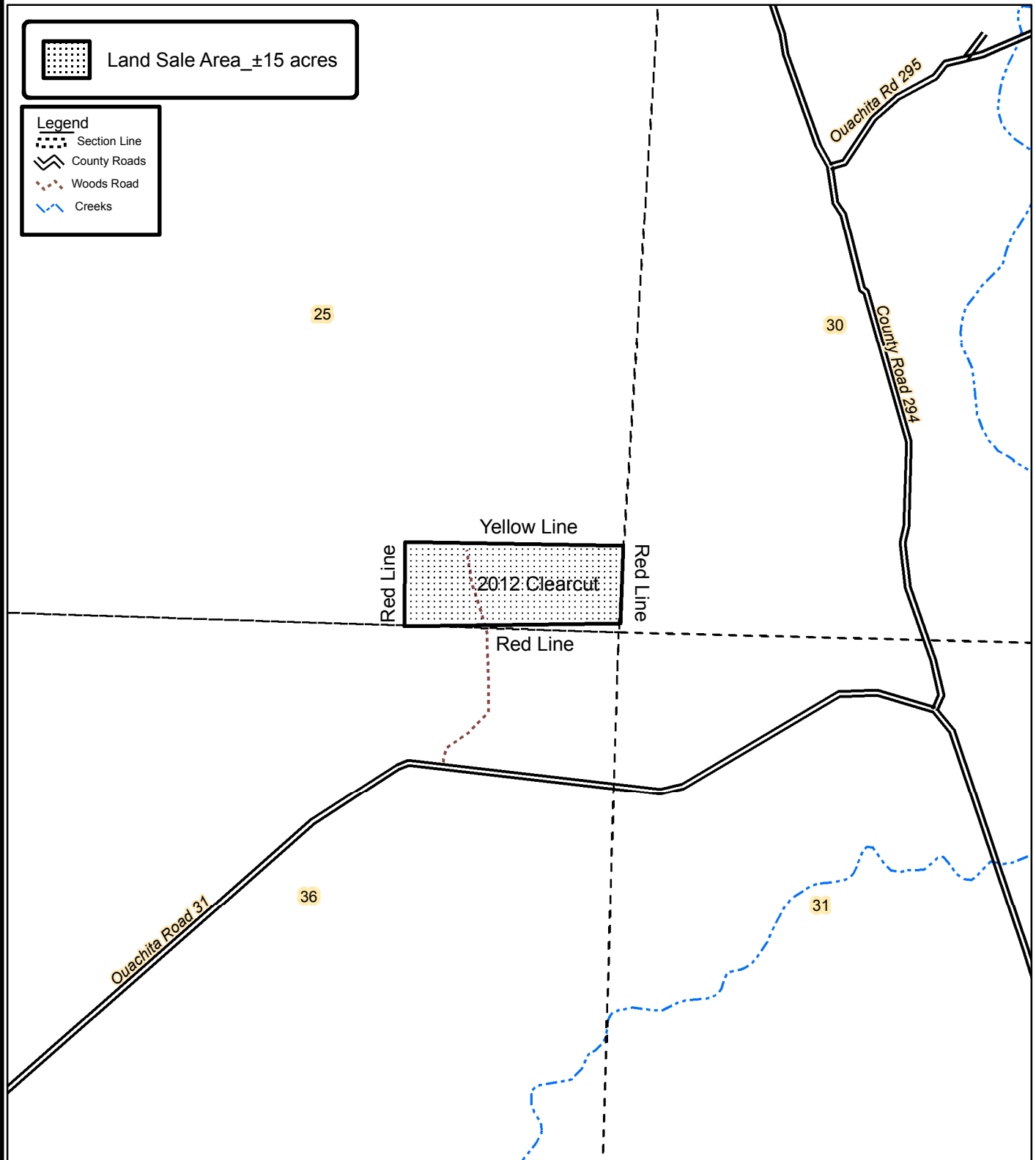
S 15 acres of the SE $\frac{1}{4}$ of SE $\frac{1}{4}$, Sec. 25, T11S, R17W, Ouachita County, Arkansas,
containing 15 acres, more or less.



Land Sale Area_±15 acres

Legend

- Section Line
- County Roads
- Woods Road
- Creeks



0 0.125 0.25
Miles



Created: September, 2012
By: JDT