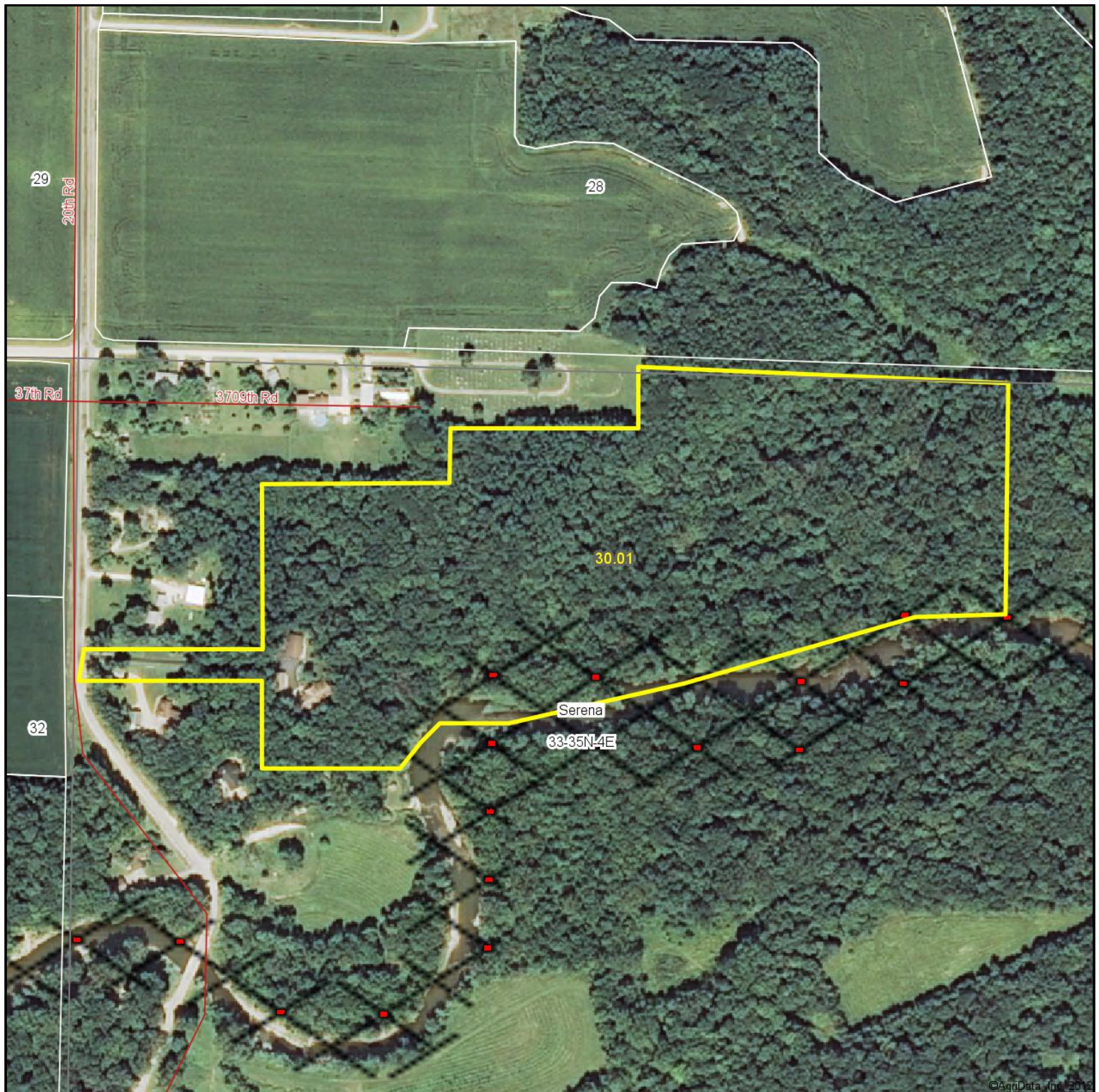


Aerial Map



Capital
Agricultural
Property
Services, Inc.

Maps provided by:



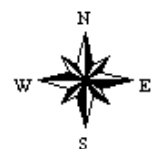
©AgriData, Inc. 2012

www.AgriDataInc.com

33-35N-4E
La Salle County
Illinois

map center: 41° 28' 10.02, 88° 46' 53.73

scale: 4093



9/19/2012

Field borders provided by Farm Service Agency as of 5/21/2008. Aerial photography provided by Aerial Photography Field Office.