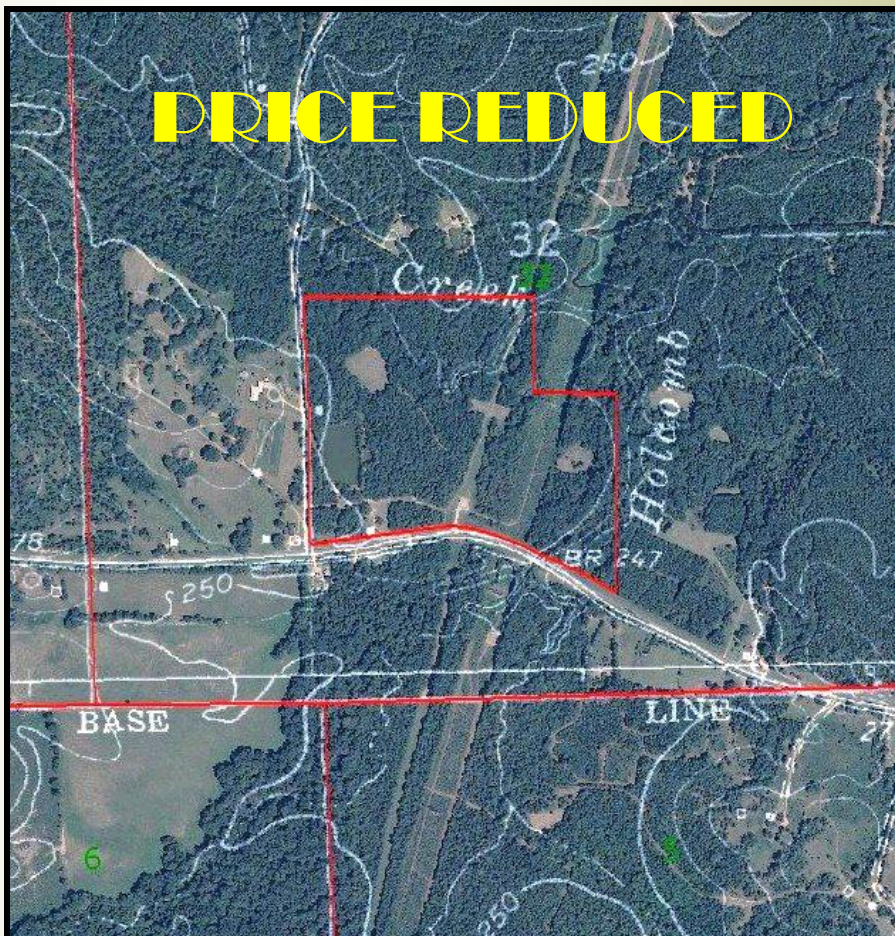




Old Port Gibson Road

52.6 Acres +/-
Copiah County, MS



52.60 surveyed acres on Old Port Gibson Road in Copiah County. The property is located approximately 9 miles west of I- 55 Exit 61 at Hazlehurst. Approximately 10 acres of 15 year plantation pine with the balance in hardwoods.
1280 sq. ft. mobile home included in the sale.
2 +/- acre pond stocked with Bass, Bream and White Perch.
12 x 16 guest house with kitchen overlooking the pond.
Food plots and stands in place, power line and pipeline across the property can be utilized as additional food plots.

This is a great small hunting and weekend property in an area known for excellent deer and turkey hunting.

\$210,000.00

CONTACT:
J. PARKER SARTAIN
601.506.2398
psartain@sartainsheritage.com

Sartain's Heritage Properties
106 First Choice Drive
Madison, MS 39110
601.856.2720
Fax: 601.853.6765
www.SartainsHeritage.com

