

Dry Canyon Ranch

*2,906 Acres, Fort Davis,
Jeff Davis County, Texas
“Sproul Ranch” Since 1886*



James King, Agent

Office 432 426.2024

Cell 432 386.2821

James@KingLandWater.com

Dry Canyon Ranch

2,906 acres

Jeff Davis County, Texas

"Sproul Ranch" since 1886

James King, Agent

Office 432 426.2024

James@KingLandWater.com

Location

Dry Canyon Ranch is comprised of 2,906 acres and is being offered for sale by the Sproul family who has owned the ranch since 1886. It is located off Highway 118 a historic Scenic Loop below McDonald Observatory in the Davis Mountains of West Texas. The property is only ten miles east of the 33,000 acre Davis Mountain Preserve and in proximity to additional large stable private ranches some with conservation easements. It is part of a protected ranch neighborhood with unobstructed views of the observatory, canyons, and area mountains. Dry Canyon Ranch is very close to Fort Davis and its various amenities like the State Park and National Historic Site but it is also one of the most secluded ranches in the state of Texas. Access is off the County maintained Sproul Road which Intersects Highway 118 at Prude Ranch then by deeded easement past the main headquarters house five miles off the paved highway then up into the Canyon country of the Davis Mountains by easement road to the Property.

Acreage

2,906 acres in Jeff Davis County.

Description

Dry Canyon Ranch is located in the heart of the Davis Mountains, a Sky Island of the Chihuahuan Desert with elevations ranging from 5,200 feet to 6,200 feet. Two major canyons bisect this high forested rangeland creating some of the most scenic bluffs, rocky outcrops, canyons, meadows, and mountains in the region. This is Ponderosa and Pinion Pine country, huge Red Oaks, Big Tooth Maples, Madrone, and lush grasslands. The central geologic features on the ranch are Dry Canyon, and Horse Spring Canyon creating magnificent vistas rivaling any national park in the country. There are over 7 springs and 10 tanks that naturally supply the wildlife and its habitat with ample water. Some of the creeks run most years and all of the creeks flow in the cool wet summers of the high Davis Mountains. The views are stunning and overlook the most spectacular scenery in the entire Davis Mountains. Livermore, Black, Haystacks, Blue, Star, and Limpia mountains can all be seen from overlooks on the ranch. Mountain ranges beyond Alpine and Marfa, the Glass and Chinati Mountains (30 to 50 miles distant) can be seen clearly on most days. This is part of the historic Sproul Ranch settled in the late 19th century and has been a working cattle and recreation ranch ever since.

The most amazing aspect of the ranch is the well designed road network that allows excellent access throughout the ranch which can be used by vehicles or by horseback for scenic tours. These roads were designed by the Sproul family starting some 100 years ago for working cattle, building earth tanks, and accessing the amazing wildlife that this family has nurtured over the years.

Habitat

The Dallas Natural History Museum has studied the plants and animals in these canyons for decades and even described an endemic Juniper named after the Sproul family. Barton Warnock travelled throughout the ranch with the current owners ancestors in amazement of the diversity of trees, grasses and plants which were documented in his book on the Plants of the Davis Mountains.

This Davis Mountain ranch is dominated by mile high grasslands of Cane Bluestem, Blue Gramma, and Sideoats Gramma but the most amazing component are the trees. Stunning stands of native Emory, Gray, Chisos, and Chincapin Oaks with Alligator Juniper, Pinion, Ponderosa, Maples, and Mexican Walnut. The canyon and mountains create excellent topography and the views of the mountains are nothing short of breathtaking. Excellent grasses and Chihuahuan Desert plants provide habitat for the native animals, livestock and the people who live there. The diversity of plants especially near and around the springs and riparian areas are unequaled in the Davis Mountains.

Wildlife

Because of the diverse habitat with springs, creeks, boulders, trees, grasses and mountains there is an abundance of game and non-game animals and wildlife on Dry Canyon Ranch. This is big Mule Deer country and an expanding population of Rocky Mountain Elk make this a hunter's paradise. There are also smaller animal and bird species found here like Javelina, Fox, Ringtail, Mountain Lion, Zone Tail Hawk, Black Hawk, and Montezuma Quail. Native trees, brush and grasses provide excellent habitat for these species and many native birds and other non-game animals. Wooded wet canyons and lush grasslands provide excellent habitat for migratory songbirds.

Improvements

Way back in Dry Canyon under impressive Oaks and Ponderosa Pines are two separate hunting cabins fed by year round springs located along spectacular Dry Creek and its running waters and beautiful clear pools.

Water

The ranch is watered naturally by over 7 springs, two large creeks, and 10 dirt tanks and header dams. Dry Creek and Horse Spring Canyon run through the ranch during summer rains and have several permanent springs supporting the two hunting cabins and wildlife of the area.

Price

\$1,800 per acre or \$5,230,800.

Contact

James King, Agent

King Land & Water, LLC

432 426.2024 Office

432 386.2821 Cell

James@KingLandWater.com

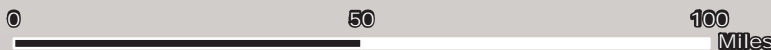
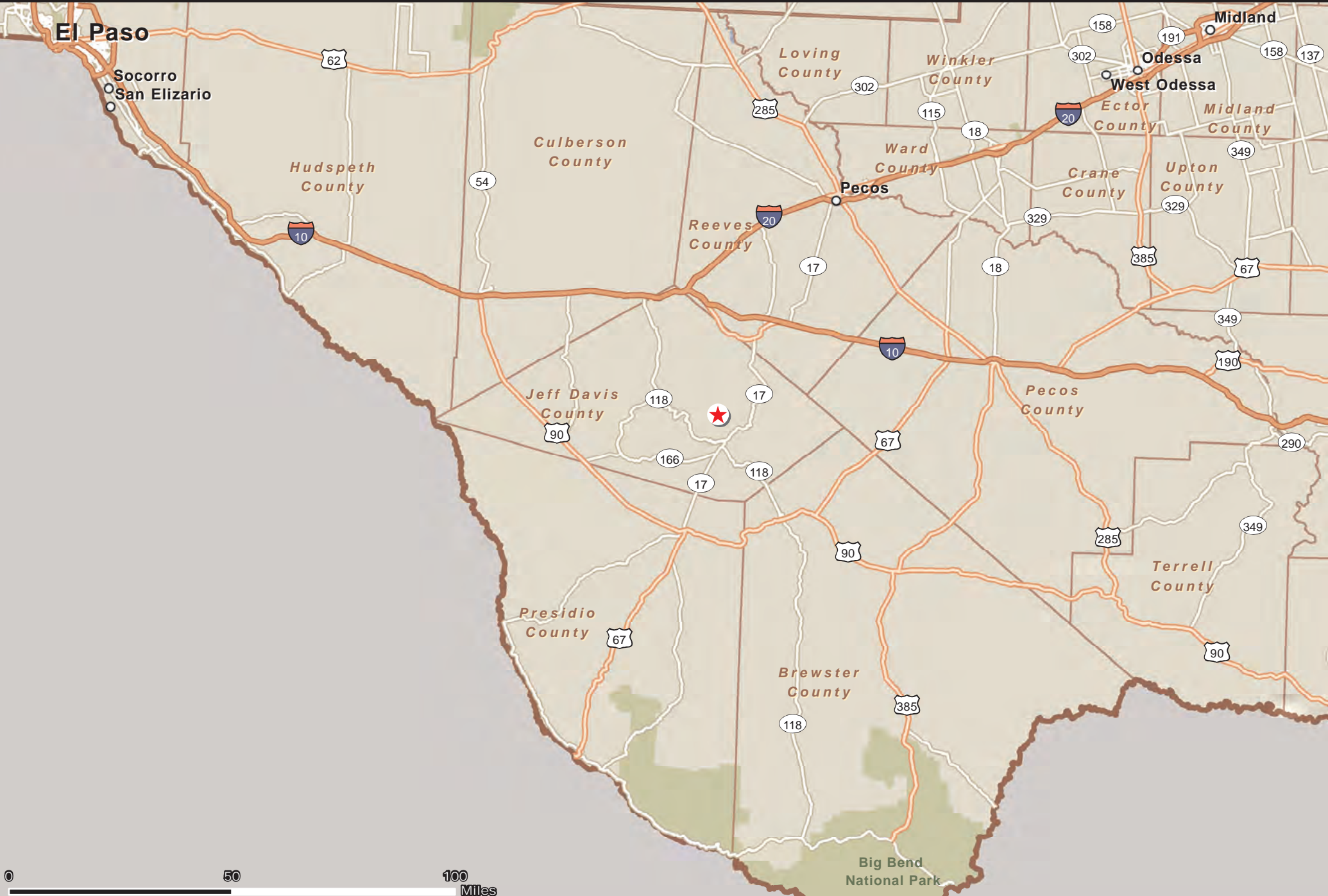
Disclaimer

This Ranch offering is subject to prior sale, change in price, or removal from the market without notice. While the information above was provided by sources deemed reliable, it is in no way guaranteed by the broker or agent.



JEFF DAVIS COUNTY, TX - DRY CANYON RANCH 2,906 AC

James King
PO Box 109 109 State Street Fort Davis, TX 79734 Tel: (432) 426-2024 www.kinglandwater.com



Date: August 20, 2012
Scale: 1: 1,750,000
Data Source: ESRI



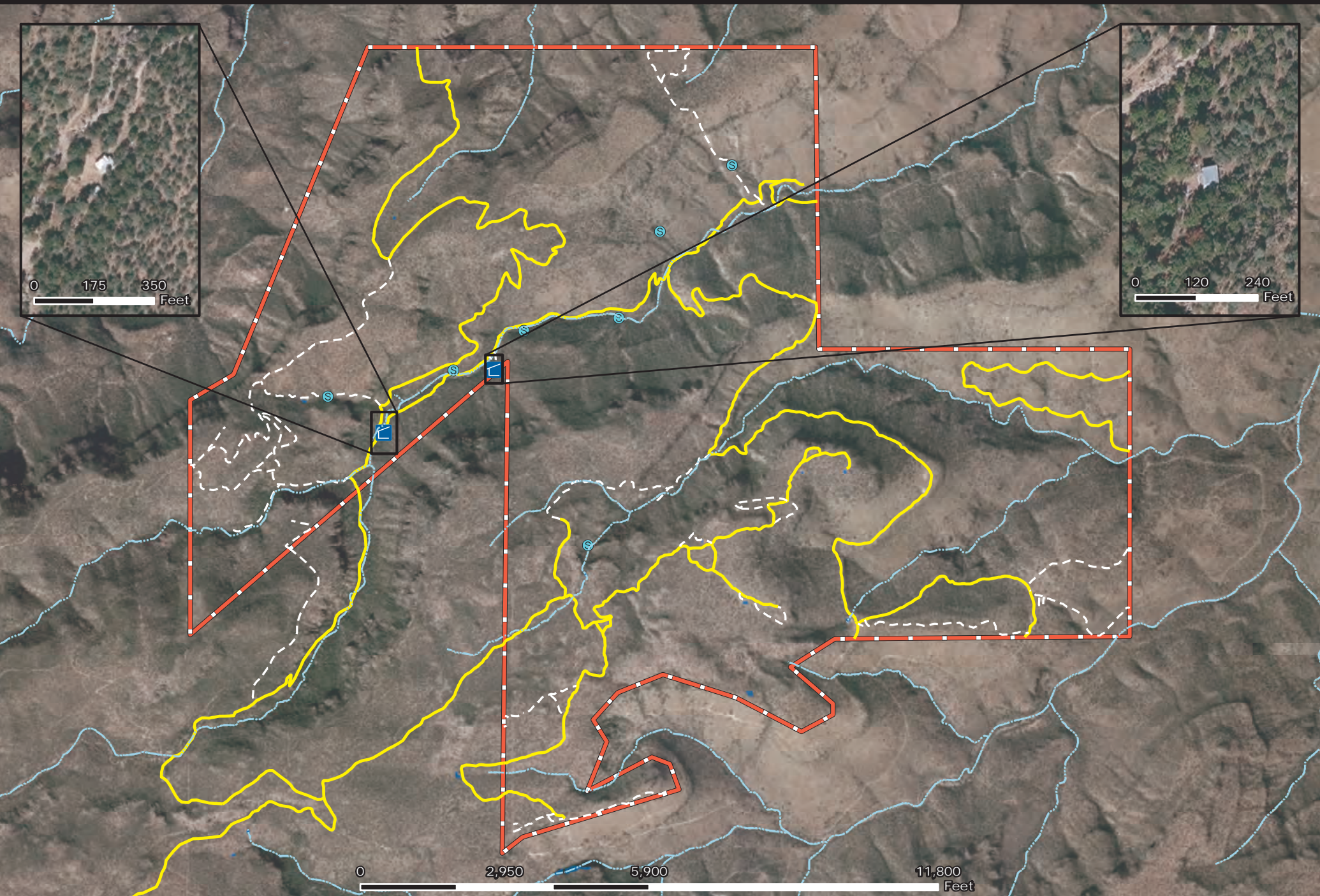
Dry Canyon Ranch




The information contained herein was obtained from sources deemed to be reliable. Frontier GIS makes no warranties or guarantees as to the completeness or accuracy thereof.
512-757-1484 www.frontiergis.com


JEFF DAVIS COUNTY, TX - DRY CANYON RANCH 2,906 AC

James King
PO Box 109 109 State Street Fort Davis, TX 79734 Tel: (432) 426-2024 www.kinglandwater.com



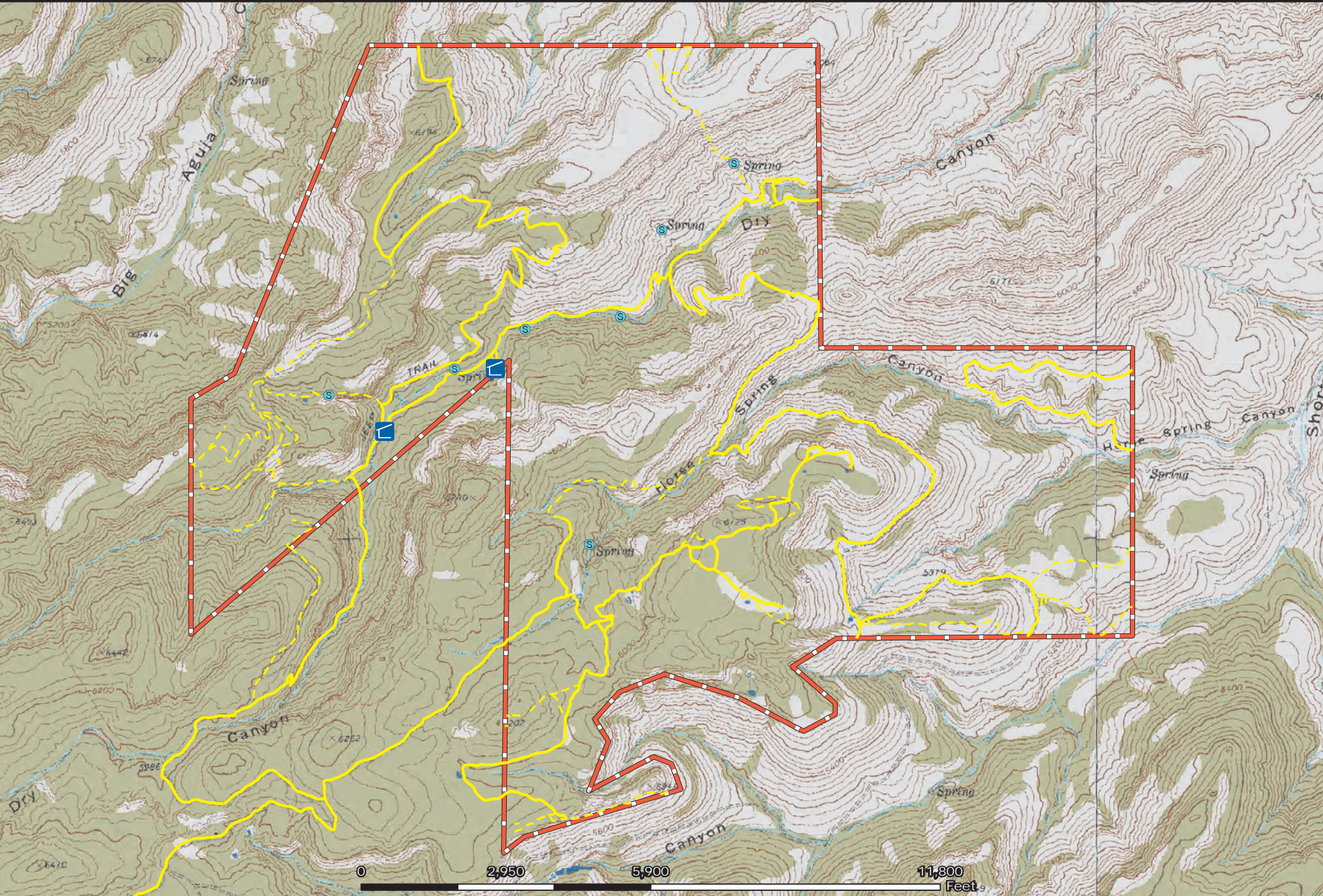
 Date: August 24, 2012
Scale: 1: 30,000
Data Source: TNRIS
Aerial Flown: 2010

-  Spring
-  Primary Road
-  Stream
-  Boundary
-  House
-  Secondary Road/Trail
-  Pond/Tank

 The information contained herein was obtained from sources deemed to be reliable. Frontier GIS makes no warranties or guarantees as to the completeness or accuracy thereof. 512-757-1484 www.frontiergis.com

JEFF DAVIS COUNTY, TX - DRY CANYON RANCH 2,906 AC

James King
PO Box 109 109 State Street Fort Davis, TX 79734 Tel: (432) 426-2024 www.kinglandwater.com



Date: August 24, 2012
Scale: 1: 30,000
Data Source: TNRIS, USGS

- House
- Spring
- Primary Road
- Secondary Road/Trail
- Stream
- Pond/Tank
- Boundary



The information contained herein was obtained from sources deemed to be reliable. FrontierGIS makes no warranties or guarantees as to the completeness or accuracy thereof.
512-757-1484 www.frontiergis.com











