



NICHOLSON LAKE ROAD

LAND DESCRIPTION

Nicholson Lake Road is ~327 acres of rolling terrain in the Historic Community of Chappell Hill. Nicholson Lake offers a peaceful setting for the Family Farm or for a future development. These 327 acres also adjoin to a 212 acre tract, which can be combined to make a total of ~539 acres. Nicholson Lake Road is only minutes from downtown Historic Chappell Hill, which provides lots of fun filled weekends. For the ladies there is antique shopping and dining in the quaint town, Chappell Hill also host the annual Bluebonnet and Scarecrow Festivals, as well as the 4th of July Parade.



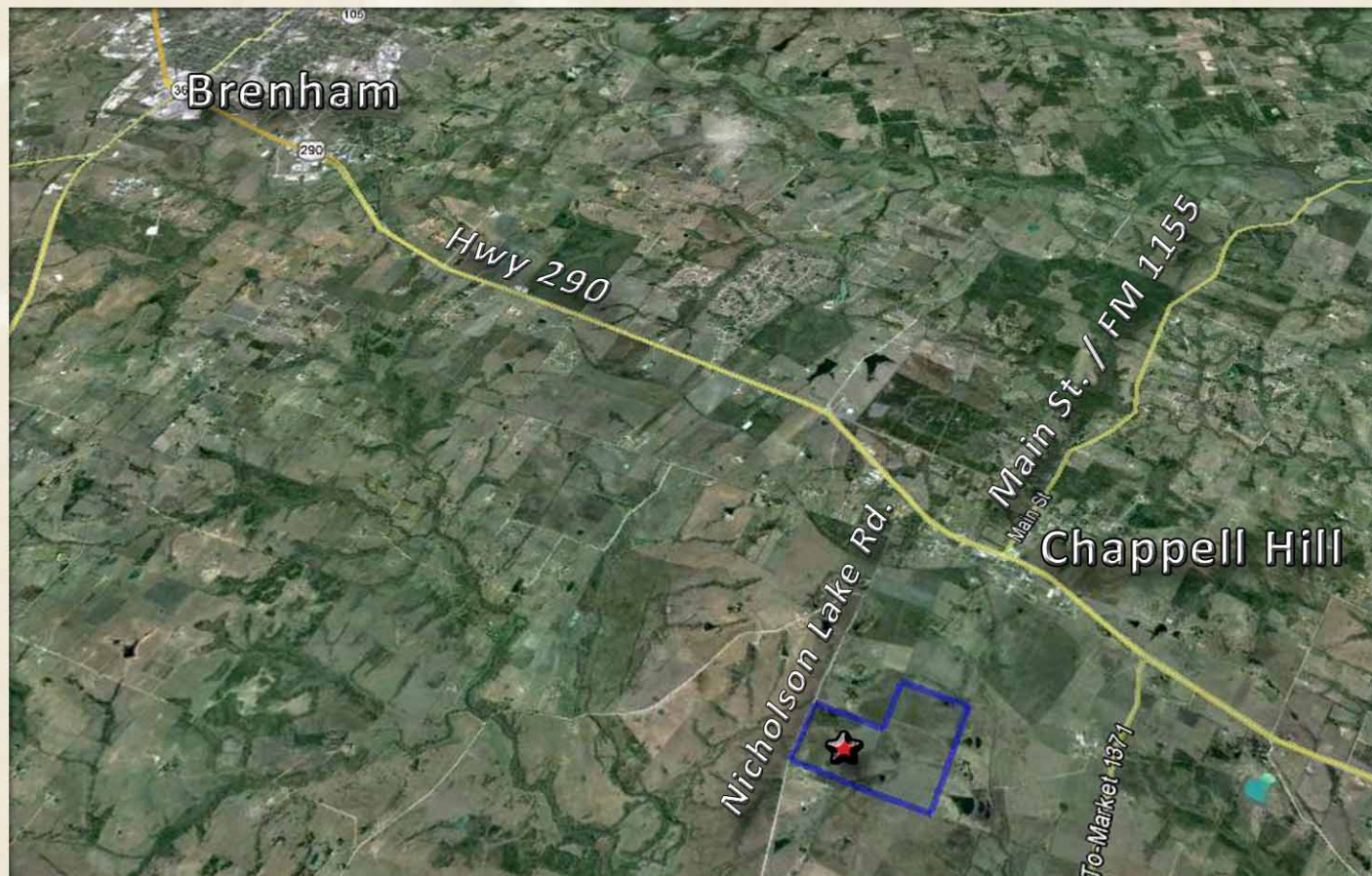
TRAVIS BEVERS
CELL: (979) 277-4920
www.BeversRealEstate.com

NICHOLSON LAKE



*327 AC NICHOLSON LAKE ROAD
3 MI. SOUTH OF DOWNTOWN
CHAPPELL HILL , TEXAS*

NICHOLSON LAKE



327 AC NICHOLSON LAKE ROAD
CHAPPELL HILL, TEXAS