

# LAND FOR SALE

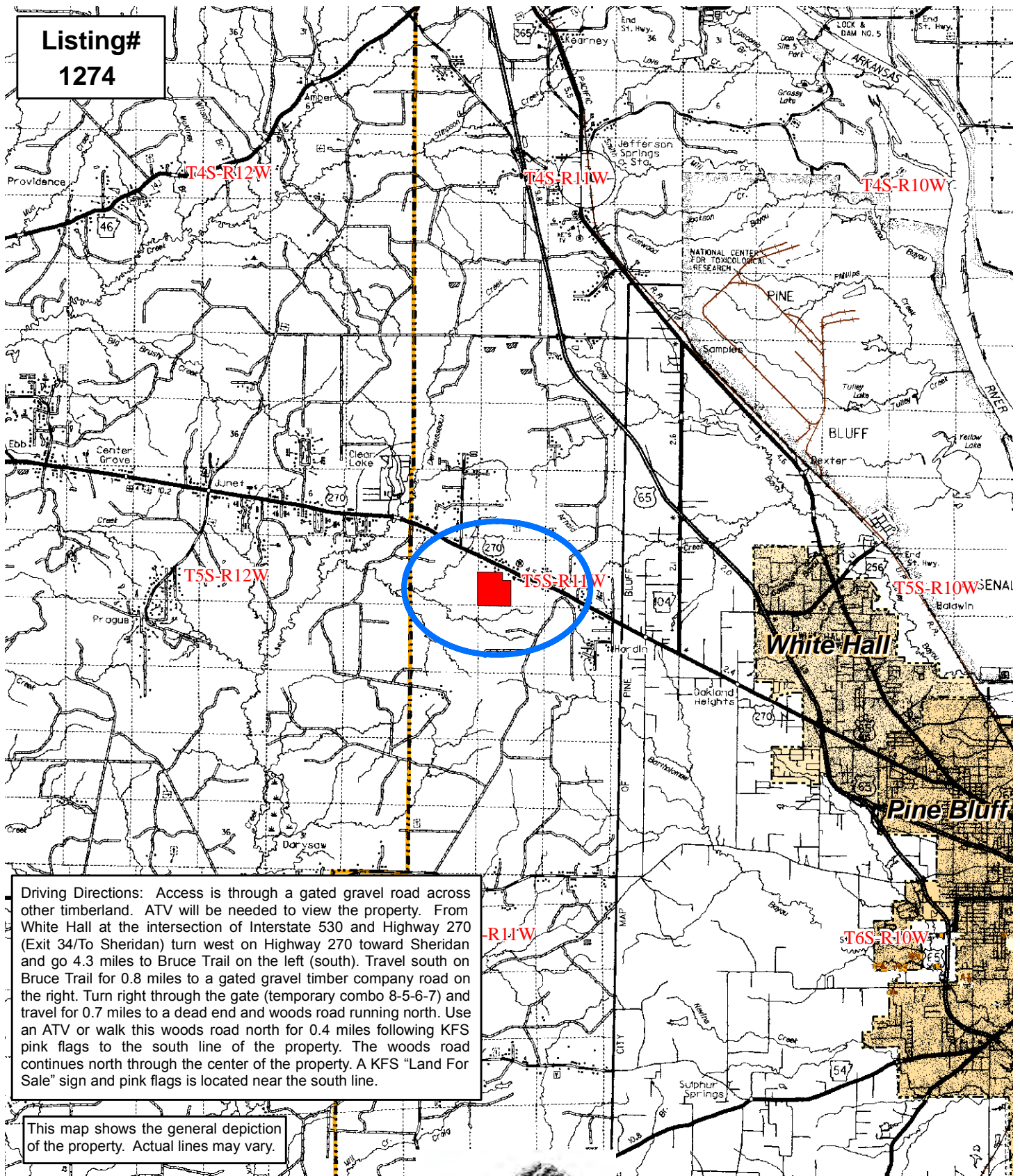
## Highway 270 Tract 150 +/- Acres

### Section 10, Township 5 South, Range 11 West

### Jefferson County, Arkansas

Location Map

**Listing#**  
**1274**



Driving Directions: Access is through a gated gravel road across other timberland. ATV will be needed to view the property. From White Hall at the intersection of Interstate 530 and Highway 270 (Exit 34/To Sheridan) turn west on Highway 270 toward Sheridan and go 4.3 miles to Bruce Trail on the left (south). Travel south on Bruce Trail for 0.8 miles to a gated gravel timber company road on the right. Turn right through the gate (temporary combo 8-5-6-7) and travel for 0.7 miles to a dead end and woods road running north. Use an ATV or walk this woods road north for 0.4 miles following KFS pink flags to the south line of the property. The woods road continues north through the center of the property. A KFS "Land For Sale" sign and pink flags is located near the south line.

This map shows the general depiction of the property. Actual lines may vary.

0 1 2 4 Miles



Created By: BDB  
Printed Date: August 15, 2012