

56 Acres M/L Warren County, Iowa



Price: \$184,800
\$3,300 / Acre

Description: 45 acres with 43.7 acres tillable. Average CSR of 51.6 on the tillable acres. Highly tillable parcel with good access.

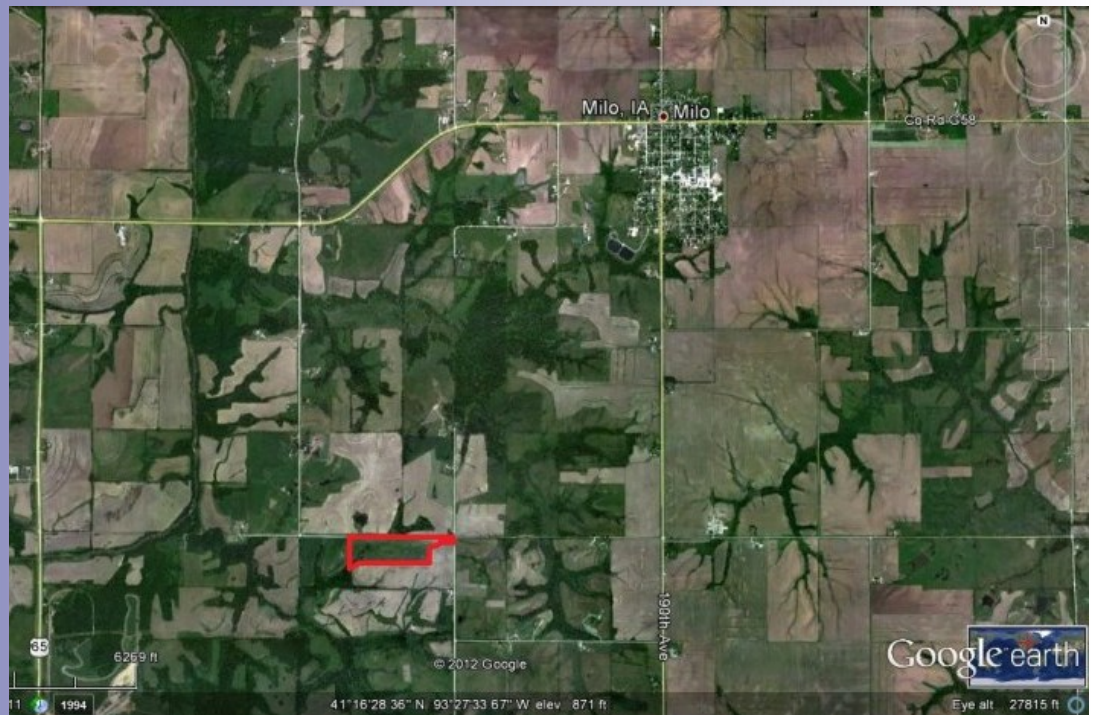
Farm Program Information:
Corn: 34 Base Acres (Estimated) with a CC Yield of 93 and a DY of 93.

Legal Description: 45 acres in the N1/2 NE 1/4 of Section 35 T 75 N R 23 W exact legal to be taken from the survey.

Directions: Take highway G58 west of Milo Iowa 2 miles to 173rd Ave Take 173rd South to Polk St. Take Polk Street east 1 mile to 180th. Take 180th south 1/8th mile. Property sits on the west side of 180th.

Taxes: \$467.00

Daran Becker
P: 515.961.0247
C: 515.979.3498
Daran@PeoplesCompany.com



Additional information can be found on our website: **LISTING # 10659**

www.Linkedin.com/company/Peoples-Company
www.Facebook.com/PeoplesCompany
www.Twitter.com/PeoplesCompany
www.YouTube.com/PeoplesCo
Blog: www.PeoplesCompany.com/Blog



© 2012 Peoples Company We obtained the information above from sources we believe to be reliable. However, we have not verified its accuracy and make no guarantee, warranty or representation about it. It is submitted subject to the possibility of errors, omissions, change of price, rental or other conditions, prior sale, lease or financing, or withdrawal without notice. We include projections, opinions, assumptions or estimates for example only and they may not represent current or future performance of the property. You and your tax and legal advisors should conduct your own investigation of the property and transaction.