

# 24 Acres M/L Warren County, Iowa



**Price:** \$117,600  
\$4,900 / Acre

**Description:** An affordable all tillable tract that can be used for anything. Use it for an addition to your tillable acres or build your dream home. 23.2 acres tillable with a 47.4 CSR.

**Farm Program Information:**  
Corn Base acres to be split from a larger farm with a CC yield of 93 and a DY is 93

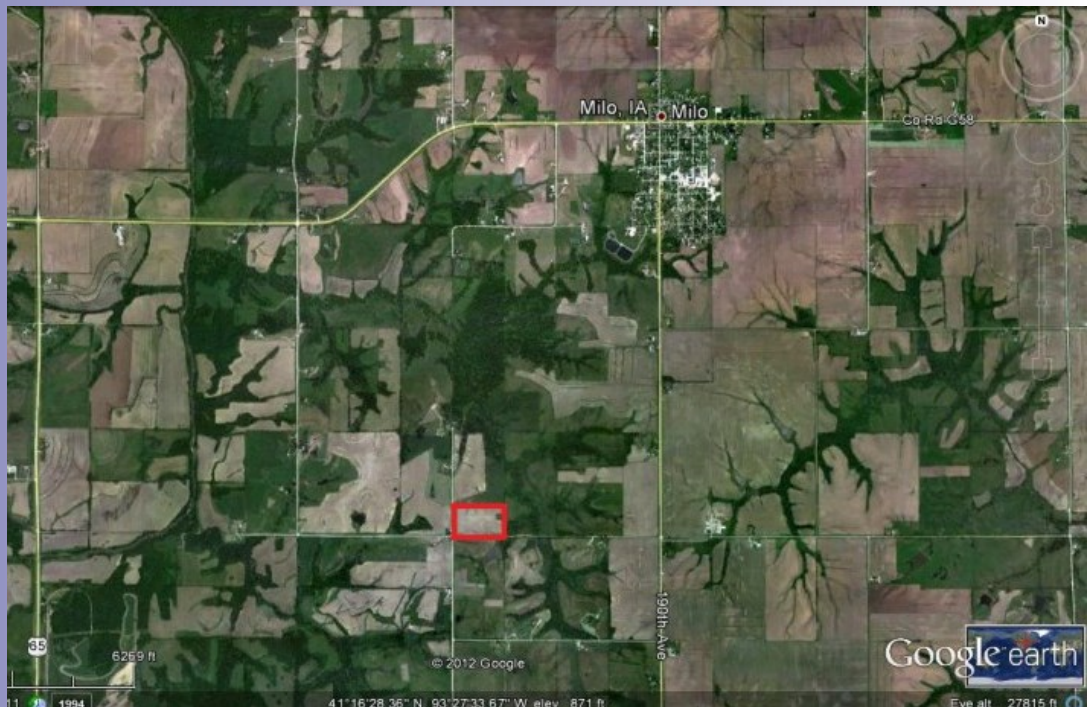
Estimated base acres 18.74

**Legal Description:** S 24 acres OF the SW 1/4 SW 1/4 Section 25 T75 N R23W

**Directions:** Take Hwy G58 west of Milo two miles to 173rd Ave. Take 173rd South to Polk St. Take Polk Street 3/4 east to the property which is on the NE corner of Polk Street and 180th Ave.

**Taxes:** \$236.00

**Daran Becker**  
P: 515.961.0247  
C: 515.979.3498  
Daran@PeoplesCompany.com



Additional information can be found on our website: **LISTING # 10656**

[www.Linkedin.com/company/Peoples-Company](http://www.Linkedin.com/company/Peoples-Company)  
[www.Facebook.com/PeoplesCompany](http://www.Facebook.com/PeoplesCompany)  
[www.Twitter.com/PeoplesCompany](http://www.Twitter.com/PeoplesCompany)  
[www.YouTube.com/PeoplesCo](http://www.YouTube.com/PeoplesCo)  
Blog: [www.PeoplesCompany.com/Blog](http://www.PeoplesCompany.com/Blog)



© 2012 Peoples Company We obtained the information above from sources we believe to be reliable. However, we have not verified its accuracy and make no guarantee, warranty or representation about it. It is submitted subject to the possibility of errors, omissions, change of price, rental or other conditions, prior sale, lease or financing, or withdrawal without notice. We include projections, opinions, assumptions or estimates for example only and they may not represent current or future performance of the property. You and your tax and legal advisors should conduct your own investigation of the property and transaction.