

LARRY E. LANGSTON & ASSOCIATES

CONSULTING ENGINEERING AND LAND SURVEYING

P. O. Box 754
GATESVILLE, TEXAS 76528
Field Notes

For: G.E. Clarke Sr., et al

Dated: September 23, 1987

All that certain land situated in Coryell County, Texas and being a part of the William J. Wells Survey, A-1069. Also purported to be a part of the same land described in Warranty Deed from Marjorie Beringer Simmons and husband to G.E. Clarke Sr., et al. Said Warranty Deed being of record in Vol. 358, Pgs. 279 & 280 of the Coryell County Deed Records.

Beginning at a steel pin set in a fenceline, the west line of the above described tract conveyed to G.E. Clarke Sr., et al. Said beginning being S19°08'23"W, 1347.81 ft. from the northwest corner of said Clarke tract. Said beginning also being N70°31'12"W, 1412.49 ft.; S68°16'25"W, 19.26 ft.; N71°18'58"W, 1639.25 ft.; N73°59'36"W, 272.28 ft.; N70°09'46"W, 946.75 ft.; and N19°02'03"E, 2383.43 ft. from the southeast corner of Block "D" of the subdivision of the William J. Wells Survey.

Thence leaving said fenceline S89°16'47"E, 1090.38 ft. to a steel pin set for the northeast corner this.

Thence S01°18'25"W, 2119.00 ft. to a steel pin set for the southeast corner this.

Thence with the north line of a 30 ft. access easement and its extension: S65°35'24"W, 560.30 ft. to a steel pin set; S73°41'18"W, 322.57 ft. to a steel pin set; and S42°12'13"W, 162.12 ft. to a steel pin set in a fenceline, the south line of the above described Clarke tract.

Thence with said fenceline N70°09'46"W, 946.75 ft. to a steel pin found at a corner post for the southwest corner this and the southwest corner of said Clarke tract.

Thence with a fenceline, the west line of said Clarke tract; N19°02'03"E, 2383.43 ft. to the place of beginning and containing 80.00 acres of land.

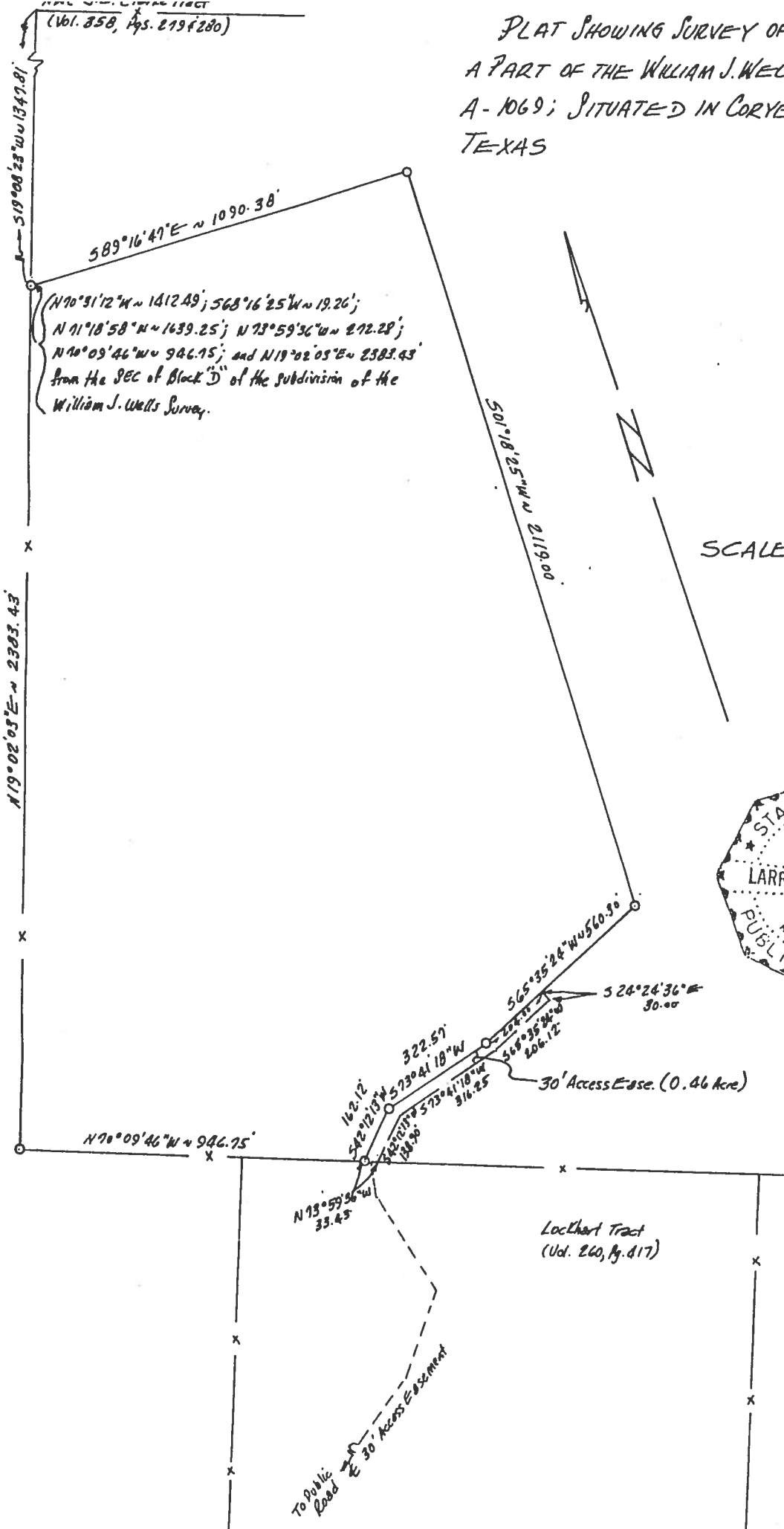
The above described 80.00 acre tract is served by the following 30 ft. access easement: Being a part of the above described G.E. Clarke Sr. tract (Vol. 358, Pgs. 279 & 280).

Beginning at a steel pin set, the most southerly corner of the above described 80.00 acre tract, a point in the south line of said Clarke tract.

Thence with the lines of said 80.00 acre tract: N42°12'13"E, 162.12 ft. to a steel pin set; N73°41'18"E, 322.57 ft. to a steel pin set; and N65°35'24"E, 204.00 ft. to a point in the south line of said 80.00 acre tract.

Thence leaving the line of said 80.00 acre tract: S24°24'36"E, 30.00 ft.; S65°35'24"W, 206.12 ft.; S73°41'18"W, 316.25 ft.; and S42°12'13"W, 138.90 ft. to corner in the south line of said Clarke tract.

PLAT SHOWING SURVEY OF 80.00 ACRES;
A PART OF THE WILLIAM J. WELLS SURVEY,
A-1069; SITUATED IN CORYELL COUNTY,
TEXAS



September 23, 1987
Larry E. Langston