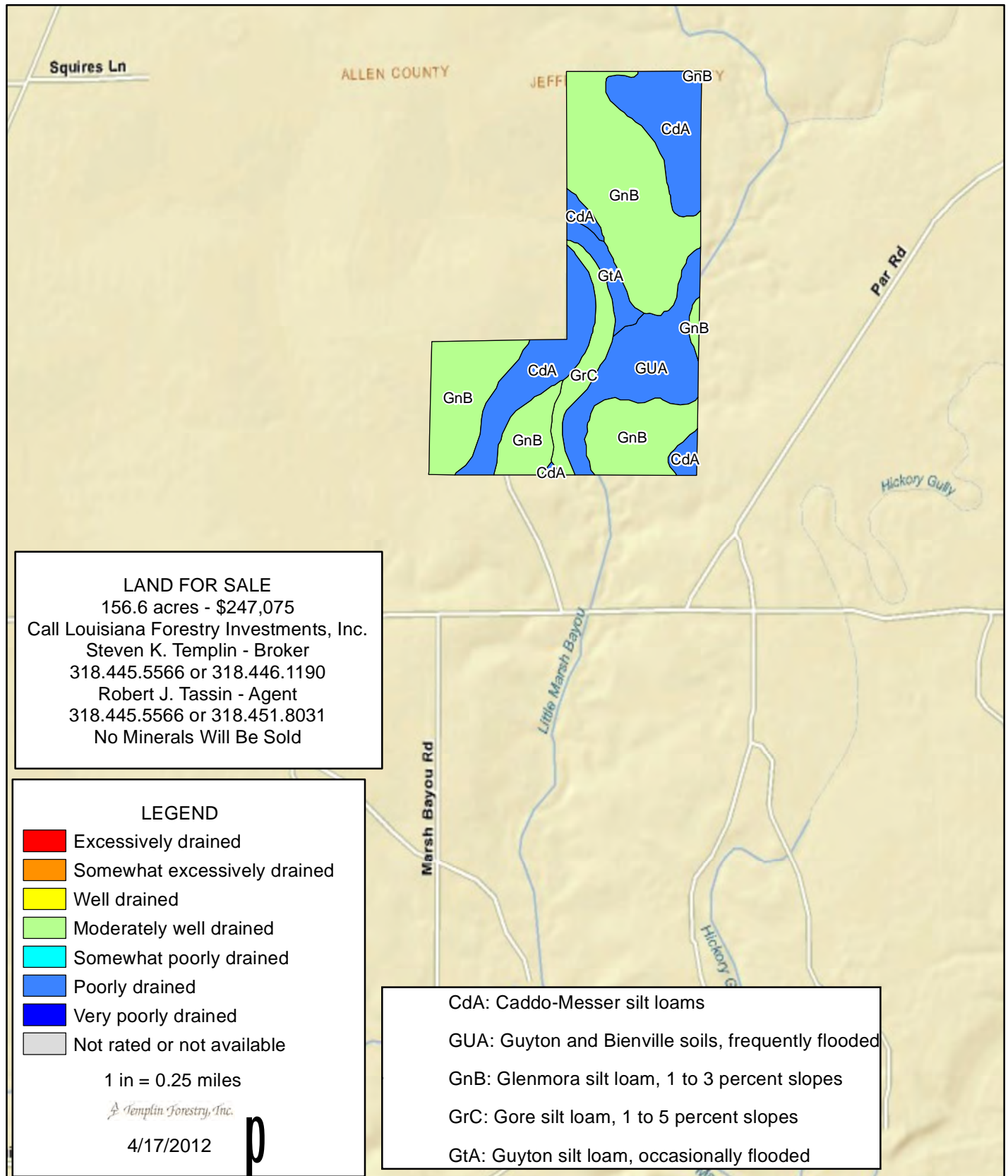


# Timberland For Sale

## Tract 7300 - 3 - Soils Map

156.6 acres, more or less, being the W/2 of the NW/4 and the NW/4 of the SW/4, Section 28; and the NE/4 of SE/4, Section 29 T7S, R7W, Jefferson Davis Parish, Louisiana.



# Brief Map Unit Description

Jefferson Davis Parish, Louisiana

[Only those map units that have entries for the selected description categories are included in this report]

**Map unit:** CdA - Caddo-Messer silt loams

**Description category:** WDS

*This group consists of wet, occasionally to frequently flooded loamy soils with a high potential for productivity. Equipment limitations are severe and seedling mortality is moderate to severe. This is due primarily to excess water. These soils are well suited for either southern pine or hardwood. Silvicultural operations should be restricted to dry weather periods. Plant more seedlings than the recommended rate on these soils to ensure a stand. Site index for loblolly and slash pine is 90, cottonwood 90-100, green ash, water oak and sweetgum 90.*

*These are slightly to moderately wet, acid, loamy and clayey soils. The potential for productivity is high. Equipment limitations are moderate due to excess water. Silvicultural operations should be restricted to dry weather periods. These soils are well suited for either southern pines or hardwood. Site index for loblolly and slash pine is 90, oaks and sweetgum 90.*

**Map unit:** GnB - Glenmora silt loam, 1 to 3 percent slopes

**Description category:** WDS

*These are slightly to moderately wet, acid, loamy and clayey soils. The potential for productivity is high. Equipment limitations are moderate due to excess water. Silvicultural operations should be restricted to dry weather periods. These soils are well suited for either southern pines or hardwood. Site index for loblolly and slash pine is 90, oaks and sweetgum 90.*

**Map unit:** GrC - Gore silt loam, 1 to 5 percent slopes

**Description category:** WDS

*These are well drained to slightly wet, clayey soils with a moderately high potential for productivity. Slight to moderate erosion hazard and moderate equipment limitations due to clay subsoil. These soils are best suited for southern pine. Site index for loblolly and slash pine is 80, shortleaf pine is 70.*

**Map unit:** GtA - Guyton silt loam, occasionally flooded

**Description category:** WDS

*This group consists of wet, occasionally to frequently flooded loamy soils with a high potential for productivity. Equipment limitations are severe and seedling mortality is moderate to severe. This is due primarily to excess water. These soils are well suited for either southern pine or hardwood. Silvicultural operations should be restricted to dry weather periods. Plant more seedlings than the recommended rate on these soils to ensure a stand. Site index for loblolly and slash pine is 90, cottonwood 90-100, green ash, water oak and sweetgum 90.*

**Map unit:** GUA - Guyton and Bienville soils, frequently flooded

**Description category:** WDS

*Soils in this group are well drained and sandy with a high potential for productivity. Equipment limitations and seedling mortality are moderate. They are best suited for southern pines. Site index for loblolly and slash pine is 90, shortleaf 80.*

*This group consists of wet, occasionally to frequently flooded loamy soils with a high potential for productivity. Equipment limitations are severe and seedling mortality is moderate to severe. This is due primarily to excess water. These soils are well suited for either southern pine or hardwood. Silvicultural operations should be restricted to dry weather periods. Plant more seedlings than the recommended rate on these soils to ensure a stand. Site index for loblolly and slash pine is 90, cottonwood 90-100, green ash, water oak and sweetgum 90.*