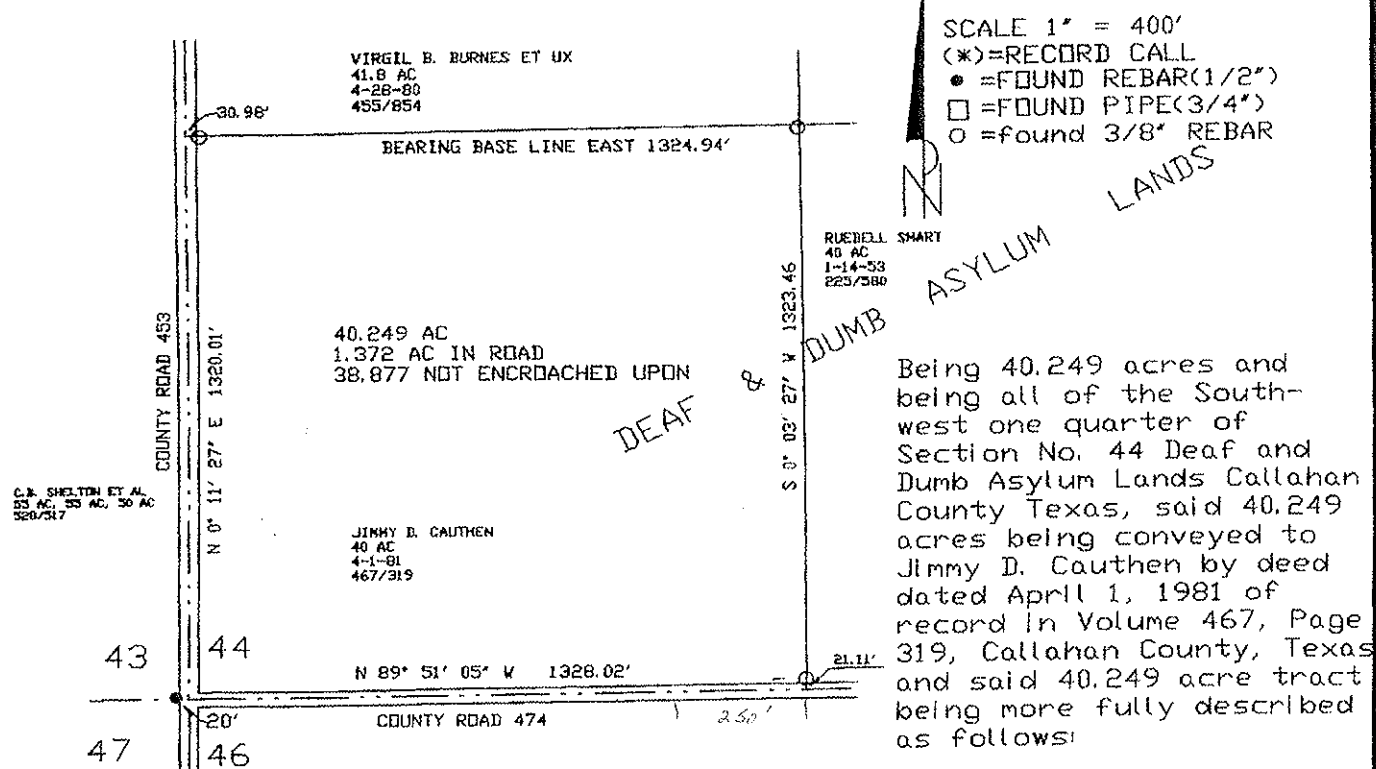


SURVEYED FOR: FRED HOLDER



Beginning at a point in the intersection of County Roads 474 and 453 for the Southwest corner of said Section No. 44 and the Southwest corner of this tract from which a corner post bears N 52° 41' 22" E 27.8';

Thence N 0° 11' 27" E, along said County Road 453, a distance of 1320.01' to a point for the Southwest corner of a 41.8 acre tract conveyed to Virgil B. Burnes et ux by deed dated April 28, 1980 of record in Volume 455, Page 854 and the Northwest corner of this tract;

Thence East, at 30.98' passing a found 3/8" rebar on the East line of said County Road and continuing for a total distance of 1324.94' to a found 3/8" rebar for the Southeast corner of said 41.8 acre tract, the Northwest corner of a 40 acre tract conveyed to Ruebell Smart by deed dated January 14, 1953 of record in Volume 225, Page 580 Deed Records Callahan County, Texas, and the Northeast corner of this tract;

Thence S 0° 03' 27" W, along the West line of said Smart tract and the East line of this tract, at 1302.35' passing a found 3/8" rebar on the North line of said county Road 474 and continuing for a total distance of 1323.46' to a point in said county Road for the Southwest corner of said Smart tract and the Southeast corner of this tract;

Thence N 89° 51' 05" W, along said County Road, a distance of 1328.02' to the point of beginning and containing 40.249 acres of land more or less. Surveyed on the Ground April 8, 2000.

DIEHL ESTES RPLS #5003
310 AUSTIN STREET
PO BOX 1044
CLYDE TEXAS, 79510-1044
(915) 893-4454; (915) 893-2822

