

THIS MAP WAS PREPARED FOR
ASSESSMENT PURPOSE ONLY

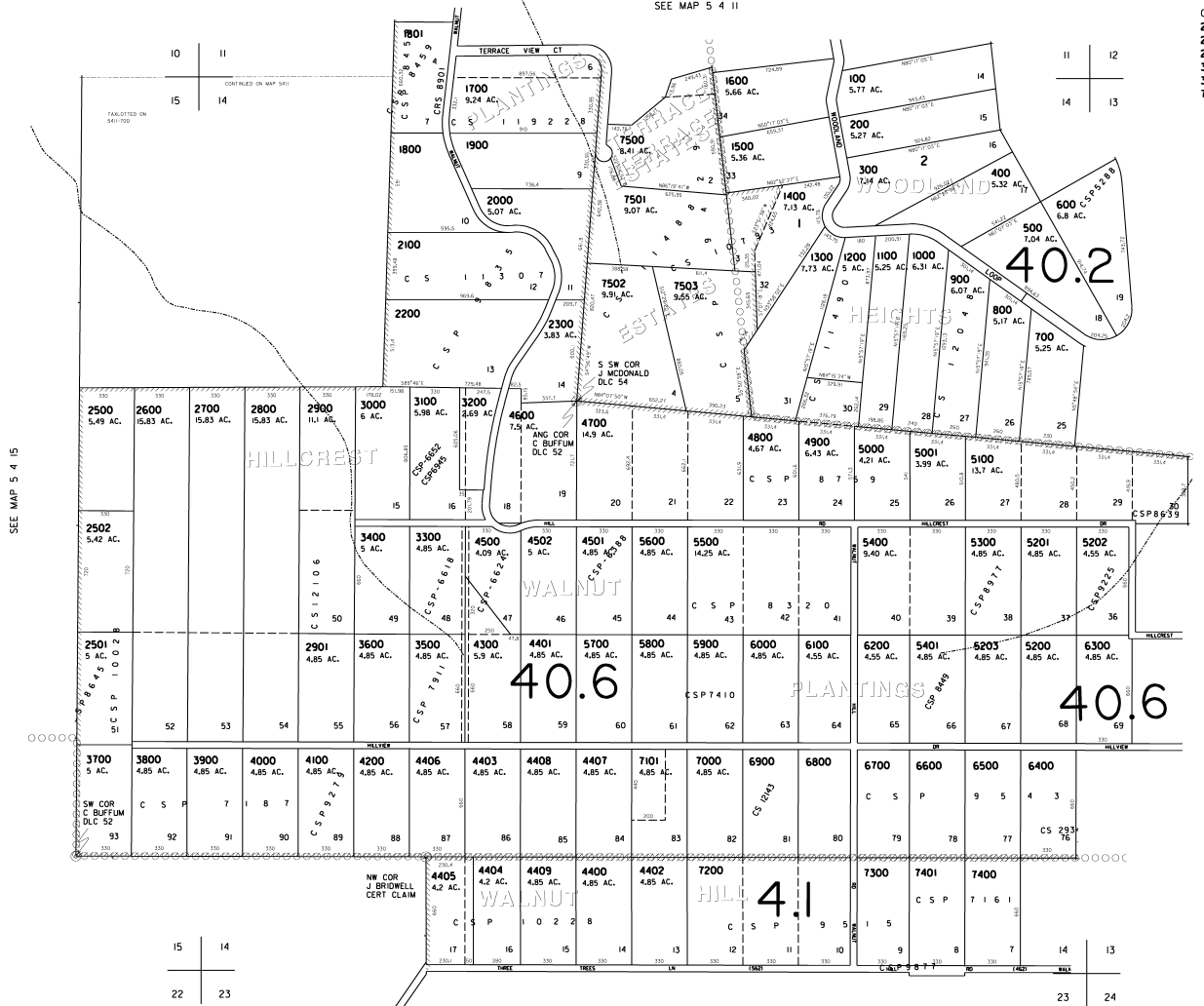
SECTION 14 T5S R4W W.M.
YAMHILL COUNTY

1" = 400'

SEE MAP 5 4 11

5 4 14

CANCELLED
2400
2901
2902
3101
3201
7100



SEE MAP 5 4 23

5 4 14

