

McMurtry Farm

982 Acres +/-

Empire Township

McLean County, Illinois



SOY CAPITAL

AG SERVICES

A DIVISION OF SOY CAPITAL BANK & TRUST COMPANY

Location:

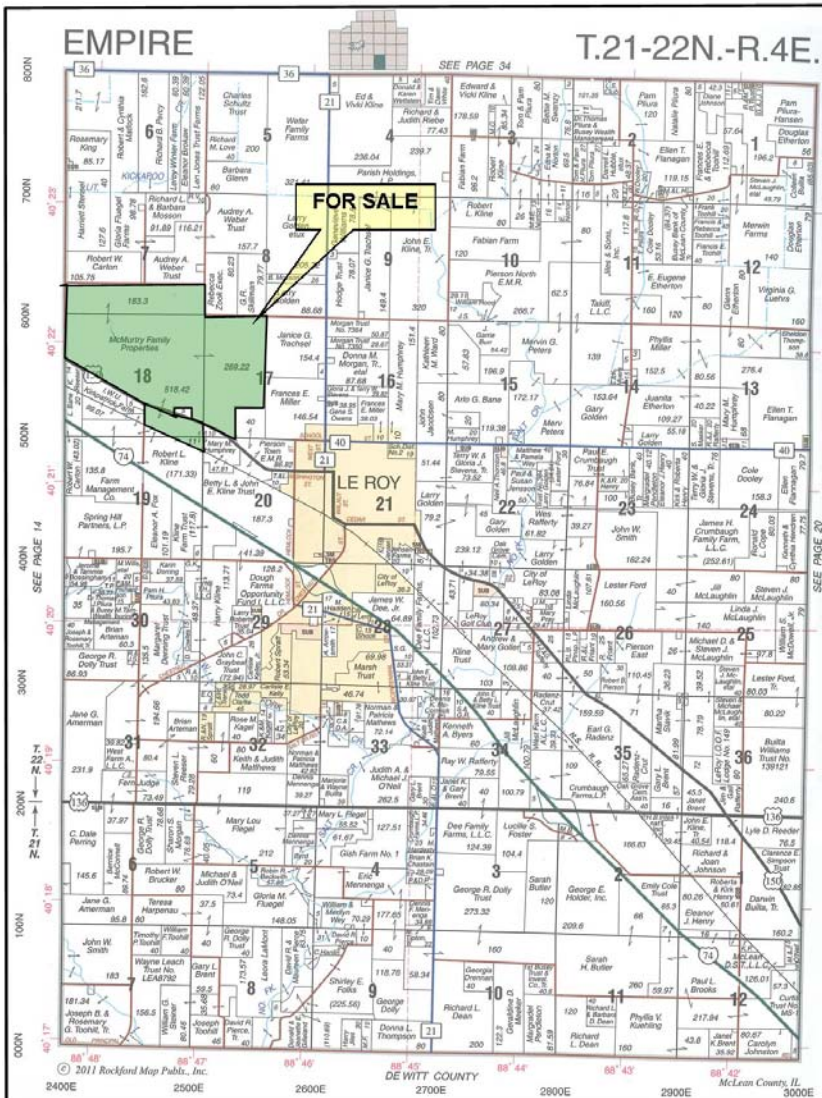
Located 1 mile Northwest of LeRoy, along Route 150, 10 miles Southeast of Bloomington/Normal



Yield History:

Year	Corn	Soybeans
2011	176	NONE
2010	149	PLANTED
2009	190	
2008	176	
2007	192	
Average:	176	

Mainly Ipava, Sable and Catlin soils



Reprinted with permission of Rockford Map Publishers, Inc.

FARMLAND FOR SALE

982 ACRES AT \$13,250 PER ACRE

Call us for a complete brochure with details:

David E. Klein, Managing Broker
Kevin R. Meiss, Managing Broker
Chad A. Hoke, Broker

dklein@soybank.com (800) 532-5263
kmeiss@soybank.com (309) 665-0056
choke@soybank.com (309) 665-0960

6 Heartland Drive, Suite A - Bloomington, IL 61704

DISCLAIMER:

The information provided is believed to be accurate and representative. It is subject to verification and no liability for error or omissions is assumed. There are no warranties, expressed or implied, as to the information herein contained, and it is recommended that all buyers make an independent inspection of the property. Plat Map reprinted with permission of Rockford Map Publishers, Inc. Kevin R. Meiss and Chad A. Hoke, designated agents with Soy Capital Ag Services, represents the Seller only in this transaction.

www.soycapitalag.com