

# Coronado Pines

MLS #372066

Reduced by \$50k!

*Ocklawaha, Marion County, Florida*



- \* Beautiful **10.77 acre** parcel located on private, crystal clear lake \*
- \* Over **470 LF** of Lake Frontage \*
- \* Property is located in deed restricted community (no mobiles) \*
- \* Only one of 2 large acreage parcels in this secluded neighborhood \*
- \* Marion Co. Tax Parcel ID #3978-001-033 (2011 RE Taxes = \$45.13) \*
- \* This exclusive property is site-ready for your dream home \*
- \* Great Dock for fishing & relaxing \*

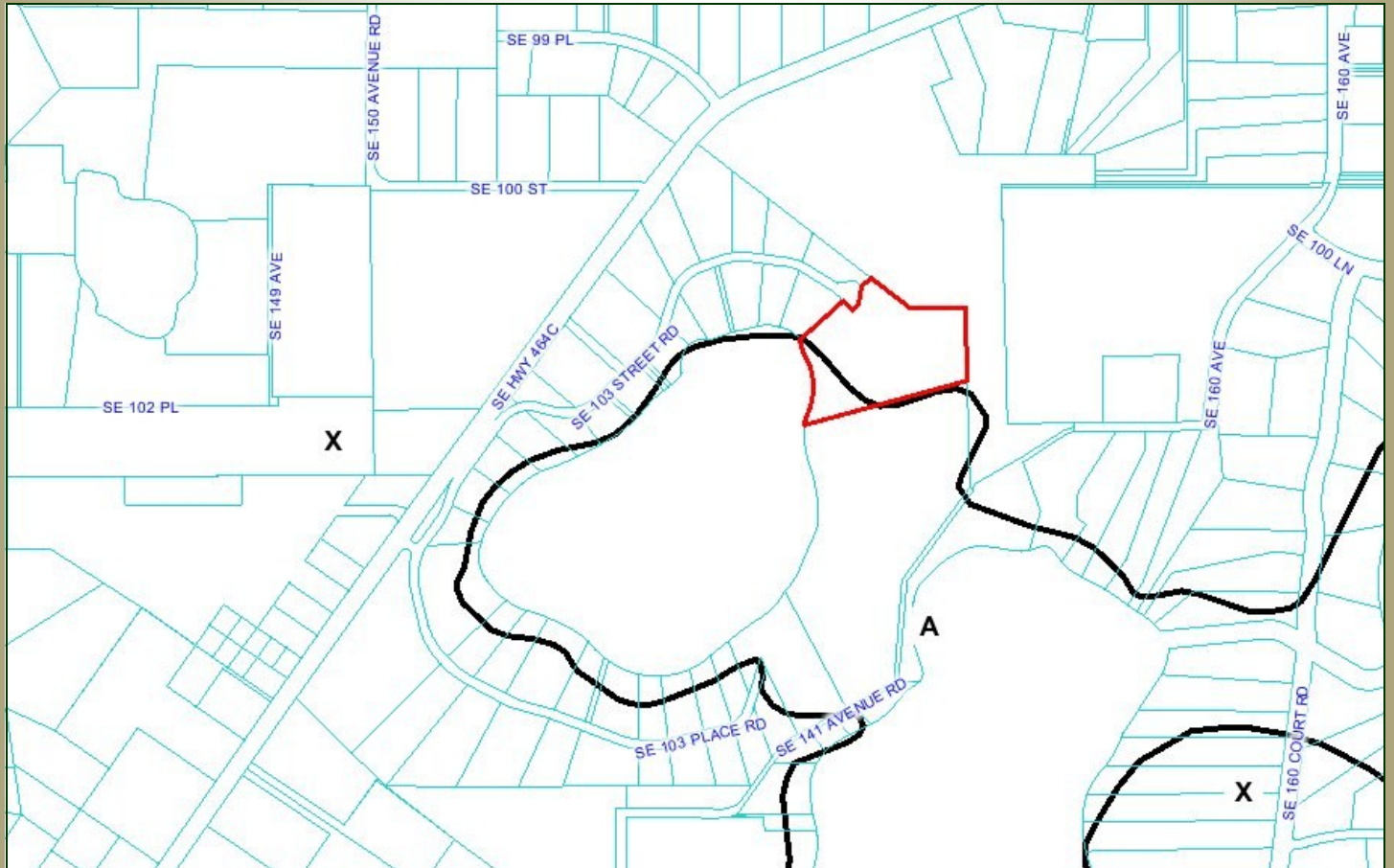
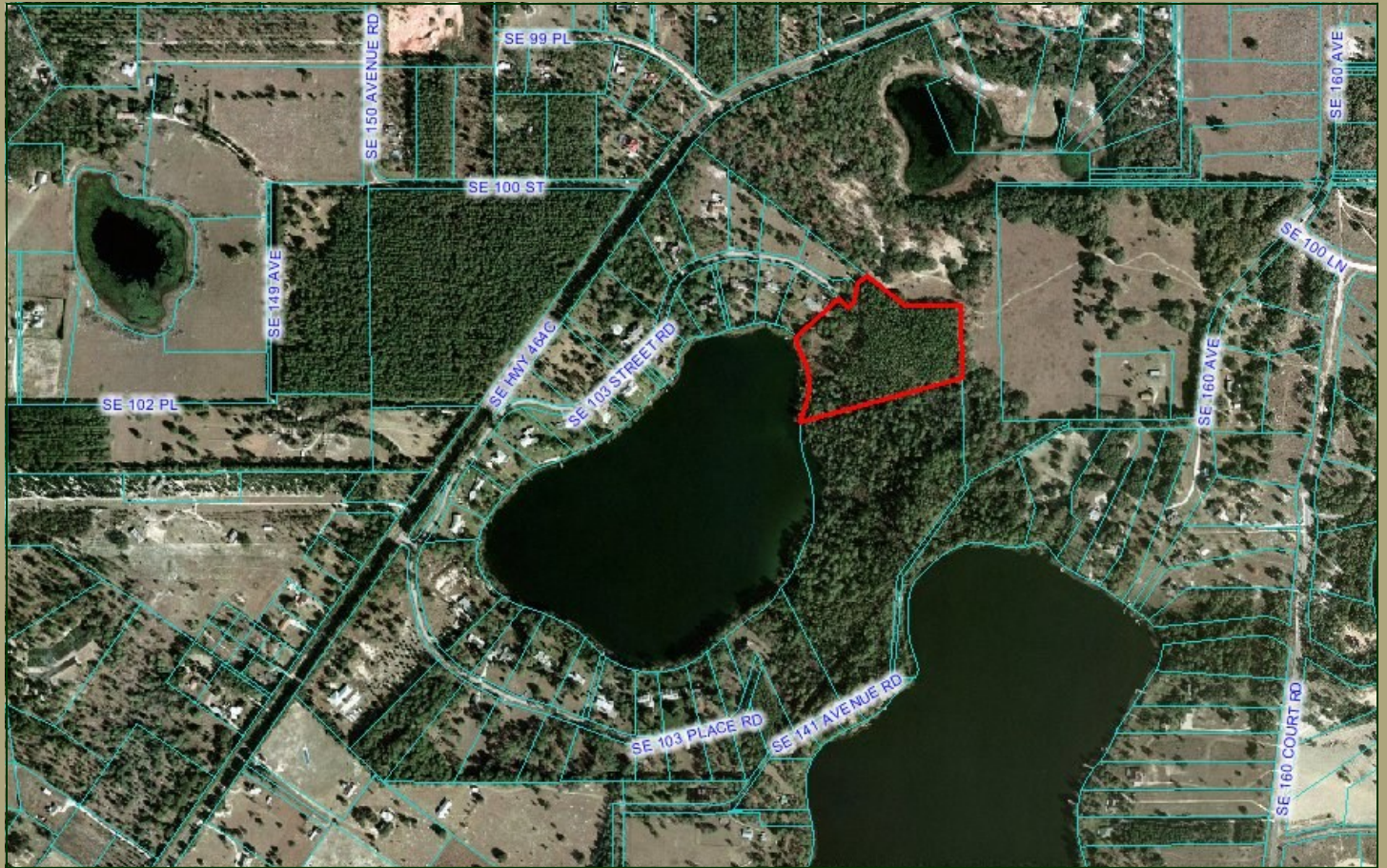
## \$149,900

[www.mcbrideland.com](http://www.mcbrideland.com)



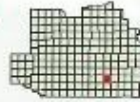
Phone: (352) 401-3755  
Fax: (352) 401-3757  
Mobile: (352) 362-5226





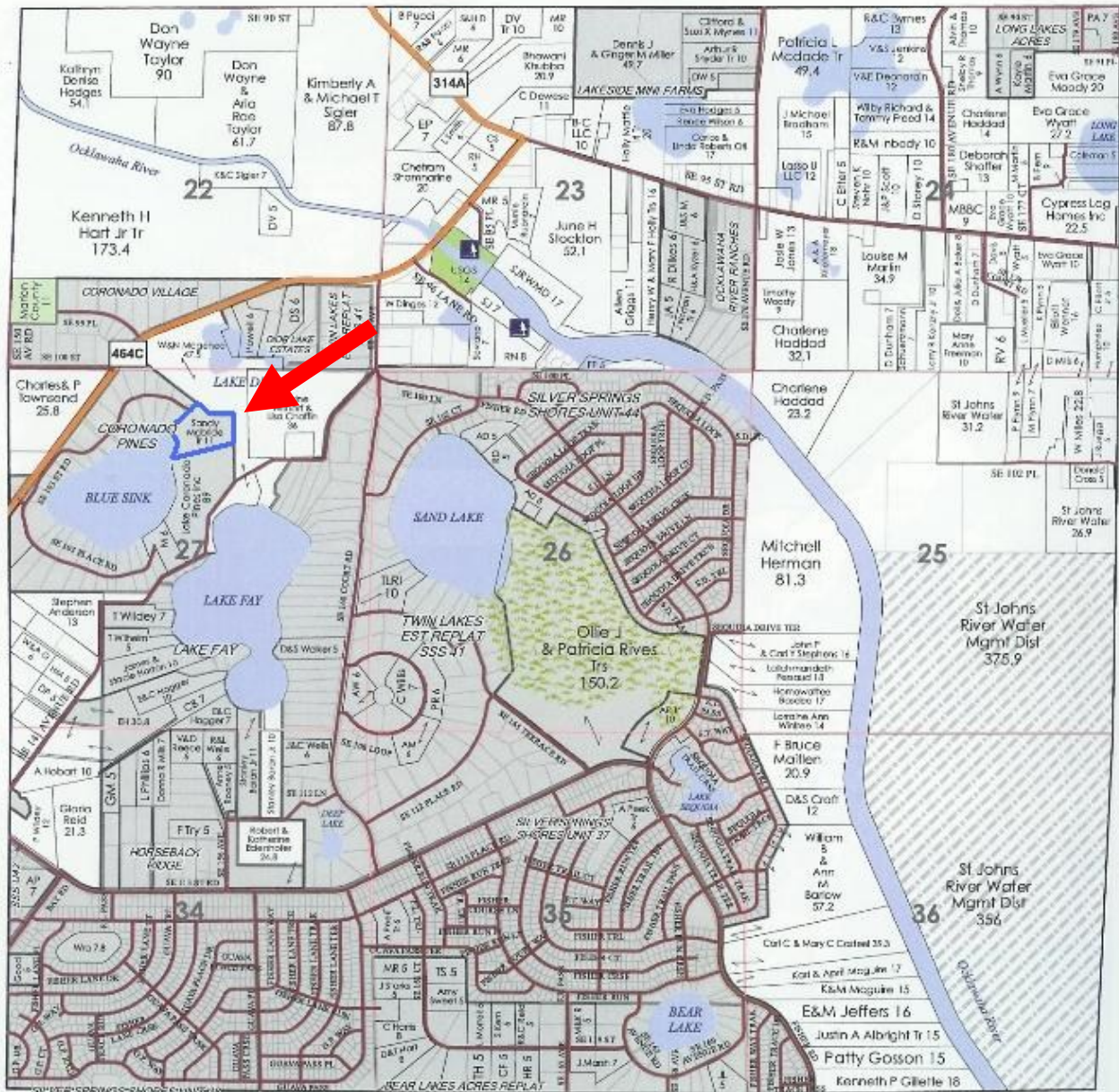


# T.16S. - R.24E. (S.E.)



(S.E.)

See T.16S. - R.24E. (N.E.) Page 156



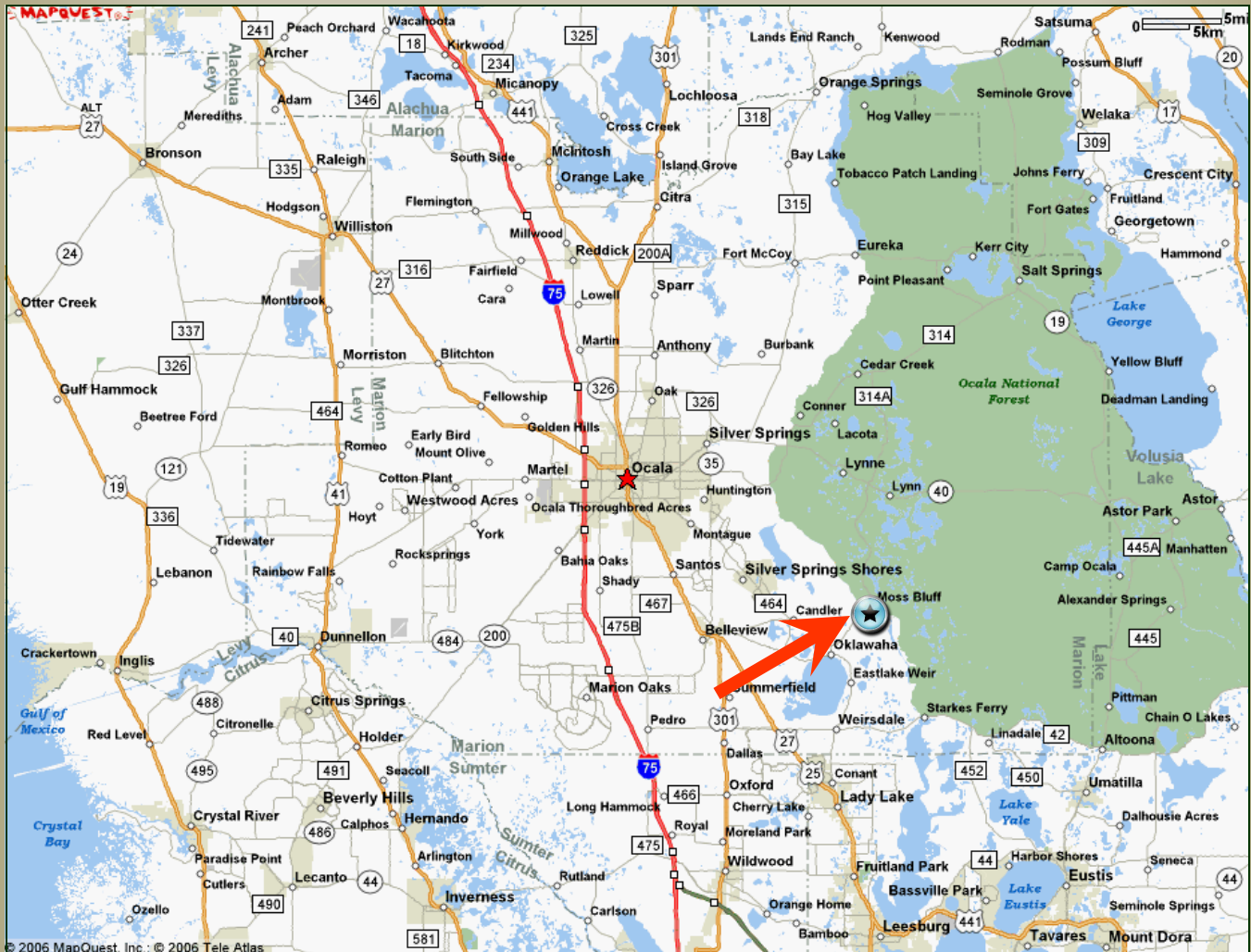
See T.16S. - R.24E. (S.W.) Page 157

See T.16S. - R.25E. (S.W.) Page 161

See T.17S. - R.24E. (N.E.) Page 187

# Directions

## Coronado Pines



### From Ocala:

Take Maricamp Road (aka 17th Street or Hwy 464) SE towards Lake Weir. Make a Left on SE 114 Street Road (heading SE). SE 114th Street Road dead ends into Hwy 464C. Make a Left (heading NE) onto Hwy 464C. Coronado Pines Subdivision entrance approximately 2.5 miles on Right (SE 103rd Place Road). Enter Subdivision and make a left at the stop sign (SE 103rd Street Road). Road dead ends into property.

Call Nathan Garcia at McBride Land to set up an appointment to view the property (352) 401-3755 or (352) 362-5226.