



## Farm Land Sales

1711 Oregon  
Hiawatha KS 66434  
785.742.4580

18156 Hwy 59  
Mound City MO 64470  
660.442.3177

[www.barnesrealty.com](http://www.barnesrealty.com)

## McDowell Investments, 607 acres m/l, Daviees CO MO

*Here is a top notch game farm with income from multiple aspects!*

**Highlights included as follows: 8' High Fence with 150 +- high value deer enclosed**

**- Dbl wide home - new 40 x 80 barn (heated concrete floor)**

**- 175 +- tillable, past years cash rent for \$90/ acre. (this was before corn was 5-6\$/bushel)**

**- is 1 mile north of Adam-ondi-Ahman (<http://en.wikipedia.org/wiki/Adam-ondi-Ahman>)**

**- 6 ponds (1-6a, 1-8a) - 1700 ft grass landing strip & has hybrid deer in the fence.**

### LOCATION:

W of Jameson MO on Hwy OO 1 m then N on 212<sup>th</sup> St 1 m.  
Tract is on the NW corner of the intersection.

### PRICE AND TERMS:

This parcel, with improvements is offered at \$2,200,000.00

### F.S.A. INFORMATION:

According to the FSA 156 & 578, CRP Contract:

<b>Tract 1670:</b>	<b>Farmland: 109 acres</b>	<b>Cropland: 42.4 acres</b>
Wheat	1.1 base acres	DY & CC Yield: 40 bu/ac
Corn	0.6 base acres	DY & CC Yield: 89 bu/ac
Sorghum	0.4 base acres	DY & CC Yield: 75 bu/ac
<b>Tract 1672</b>	<b>Farmland: 132 acres</b>	<b>Cropland: 68.2 acres</b>
Wheat	23.2 base acres	DY & CC Yield: 40 bu/ac
Corn	13.7 base acres	DY & CC Yield: 89 bu/ac
Sorghum	10.9 base acres	DY & CC Yield: 75 bu/ac
<b>Tract 4546</b>	<b>Farmland: 81 acres</b>	<b>Cropland: 35.2 acres</b>
<b>Tract 4547</b>	<b>Farmland: 189 acres</b>	<b>Cropland: 83.4 acres</b>
Wheat	44.4 base acres	DY & CC Yield: 40 bu/ac
Corn	4.8 base acres	DY & CC Yield: 84 bu/ac
Sorghum	1.9 base acres	DY & CC Yield: 70 bu/ac
Beans	32.0 base acres	DY & CC Yield: 22 bu/ac
<b>Tract 5140:</b>	<b>Farmland: 103 acres</b>	<b>Cropland: 71.7 acres</b>
Wheat	2.8 base acres	DY & CC Yield: 38 bu/ac
Corn	15.9 base acres	DY & CC Yield: 89 bu/ac
Beans	4.2 base acres	DY & CC Yield: 27 bu/ac
	<b>CRP: 17 acres</b>	<b>\$65.49/ac - \$1,113/year thru 09/30/13</b>



**REAL ESTATE TAXES/TAXABLE ACRES:** Annual taxes are approximately \$2,083.00 on 605.7 taxable acre

**MINERAL RIGHTS:** Owner is not retaining any interest in the mineral rights beneath the surface

**RENTAL STATUS:** Tract is rented for the 2012 farming season.

**LISTING AGENT:** Jamie Barnes: 660-572-0019 or Email Jamie: [barnes-realty@barnesrealty.com](mailto:barnes-realty@barnesrealty.com)

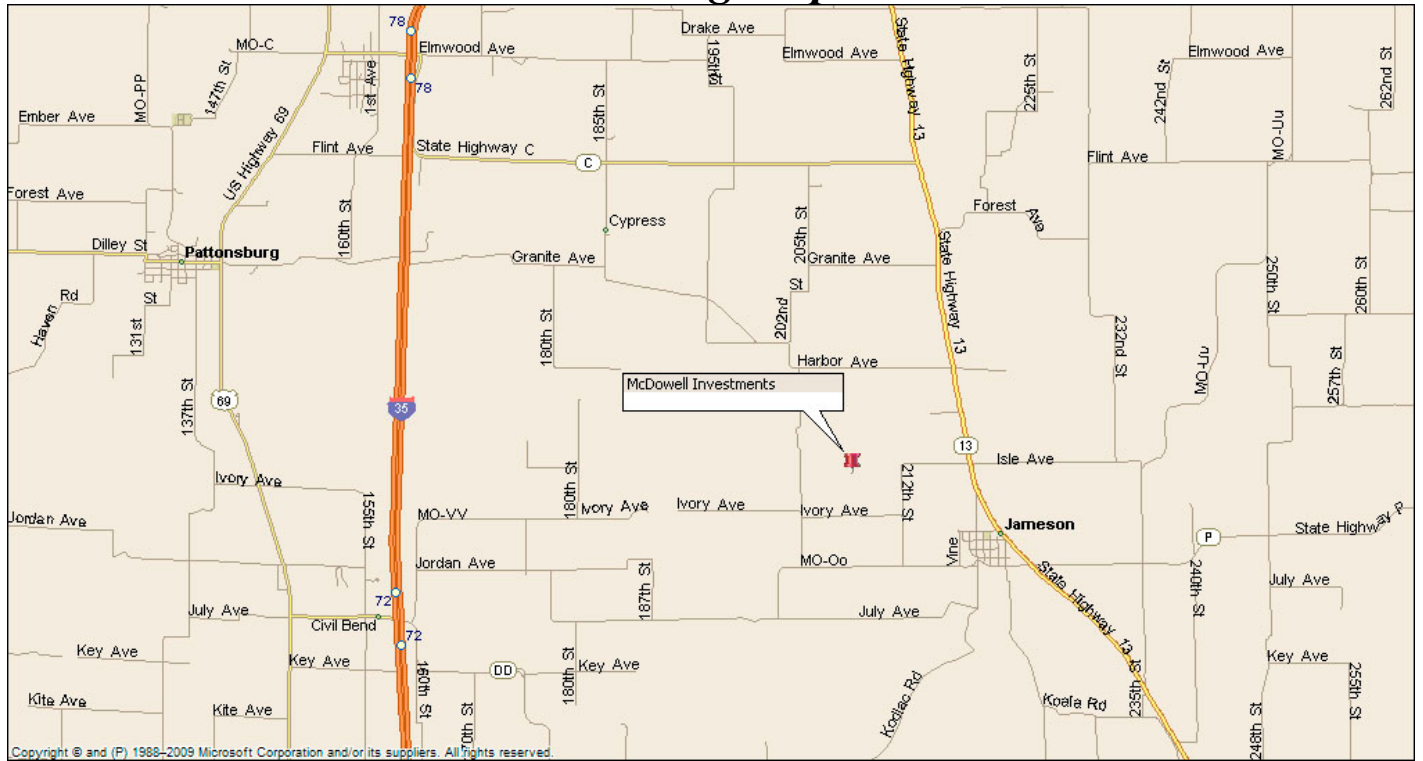
**BROKER PARTICIPATION:** Barnes Realty Company, as listing broker, will gladly, and fully cooperate with most licensed real estate brokers to obtain a sale of the property on terms satisfactory to the current owners.

*Setting the trend for how Real Estate is Sold in the Midwest.*

This information is thought to be accurate; however it is subject to verification and no liability for errors and omissions is assumed. Barnes Realty has made every effort to present accurate information on the property presented. Most of the information comes from outside sources: County/Government/Seller and human error can occur. It's the Buyer's responsibility to satisfy himself with the information presented and to determine the information to be true and accurate and the property to be suited for his intended use. The listing may be withdrawn with or without approval. The seller further reserves the right to reject any and all offers. All inquiries, inspections, appointments, and offers must be sent through: Rick Barnes, BARNES REALTY COMPANY 18156 Hwy 59, MOUND CITY, MO 64470

PHONE NUMBER: 1-660-442-3177

# ***McDowell Investments, 607 acres m/l, Daviees CO MO*** ***Driving Map***



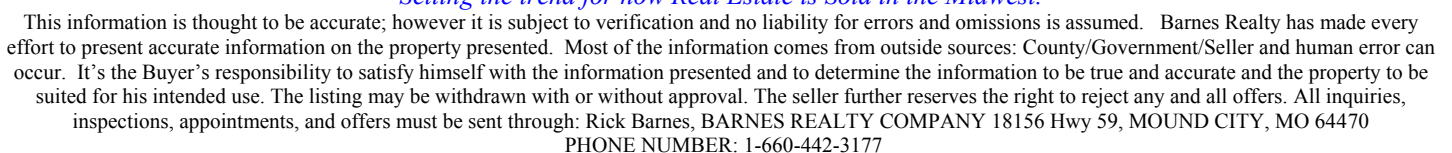
## ***General Location Map***



### ***Setting the trend for how Real Estate is Sold in the Midwest.***

This information is thought to be accurate; however it is subject to verification and no liability for errors and omissions is assumed. Barnes Realty has made every effort to present accurate information on the property presented. Most of the information comes from outside sources: County/Government/Seller and human error can occur. It's the Buyer's responsibility to satisfy himself with the information presented and to determine the information to be true and accurate and the property to be suited for his intended use. The listing may be withdrawn with or without approval. The seller further reserves the right to reject any and all offers. All inquiries, inspections, appointments, and offers must be sent through: Rick Barnes, BARNES REALTY COMPANY 18156 Hwy 59, MOUND CITY, MO 64470  
 PHONE NUMBER: 1-660-442-3177

T61-60N R29-28W





***McDowell Investments, 607 acres m/l, Daviees CO MO***  
***Google Aerial***

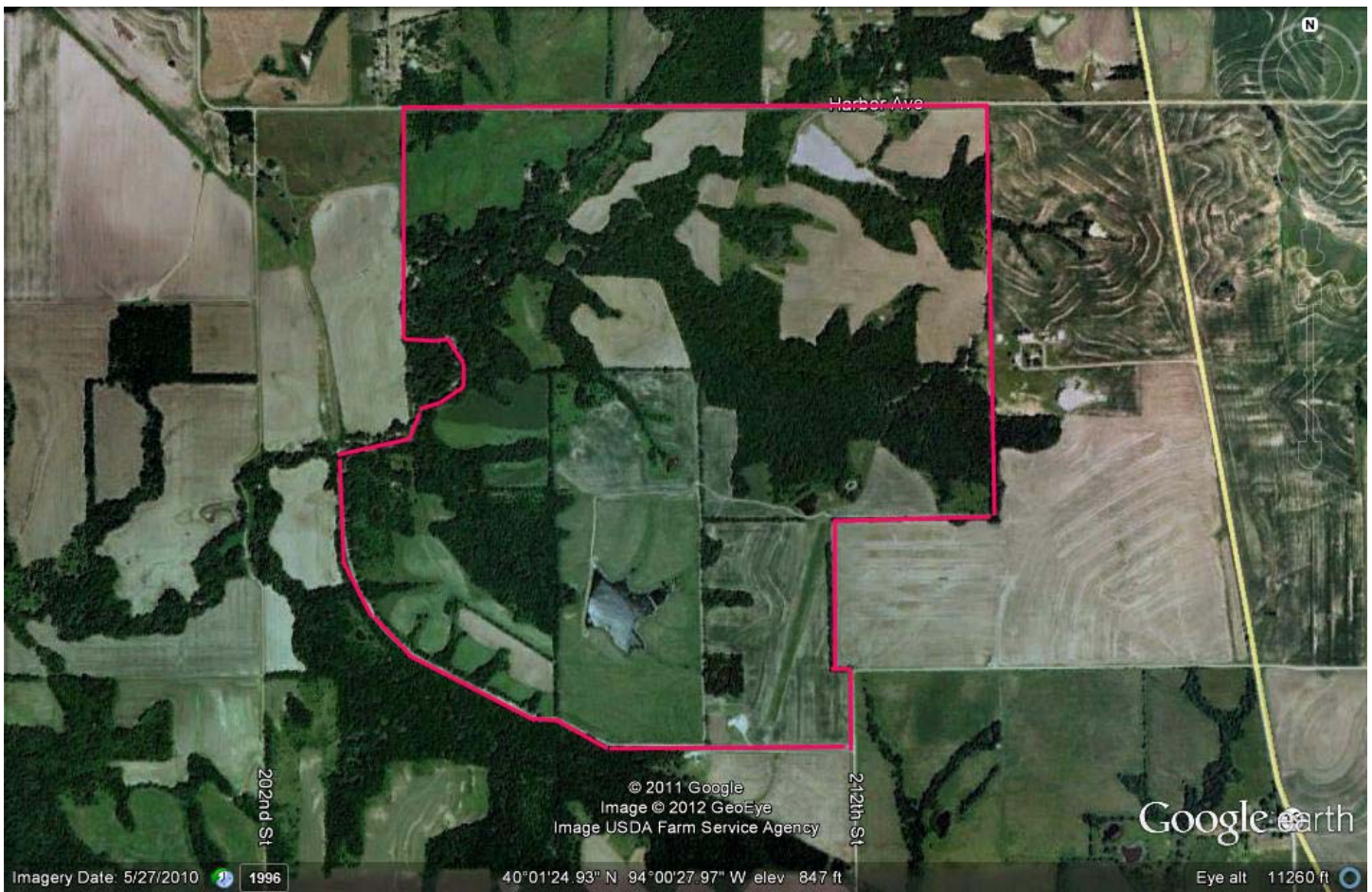


***Setting the trend for how Real Estate is Sold in the Midwest.***

This information is thought to be accurate; however it is subject to verification and no liability for errors and omissions is assumed. Barnes Realty has made every effort to present accurate information on the property presented. Most of the information comes from outside sources: County/Government/Seller and human error can occur. It's the Buyer's responsibility to satisfy himself with the information presented and to determine the information to be true and accurate and the property to be suited for his intended use. The listing may be withdrawn with or without approval. The seller further reserves the right to reject any and all offers. All inquiries, inspections, appointments, and offers must be sent through: Rick Barnes, BARNES REALTY COMPANY 18156 Hwy 59, MOUND CITY, MO 64470  
PHONE NUMBER: 1-660-442-3177



***McDowell Investments, 607 acres m/l, Daviees CO MO***  
***Google Aerial – General Location***



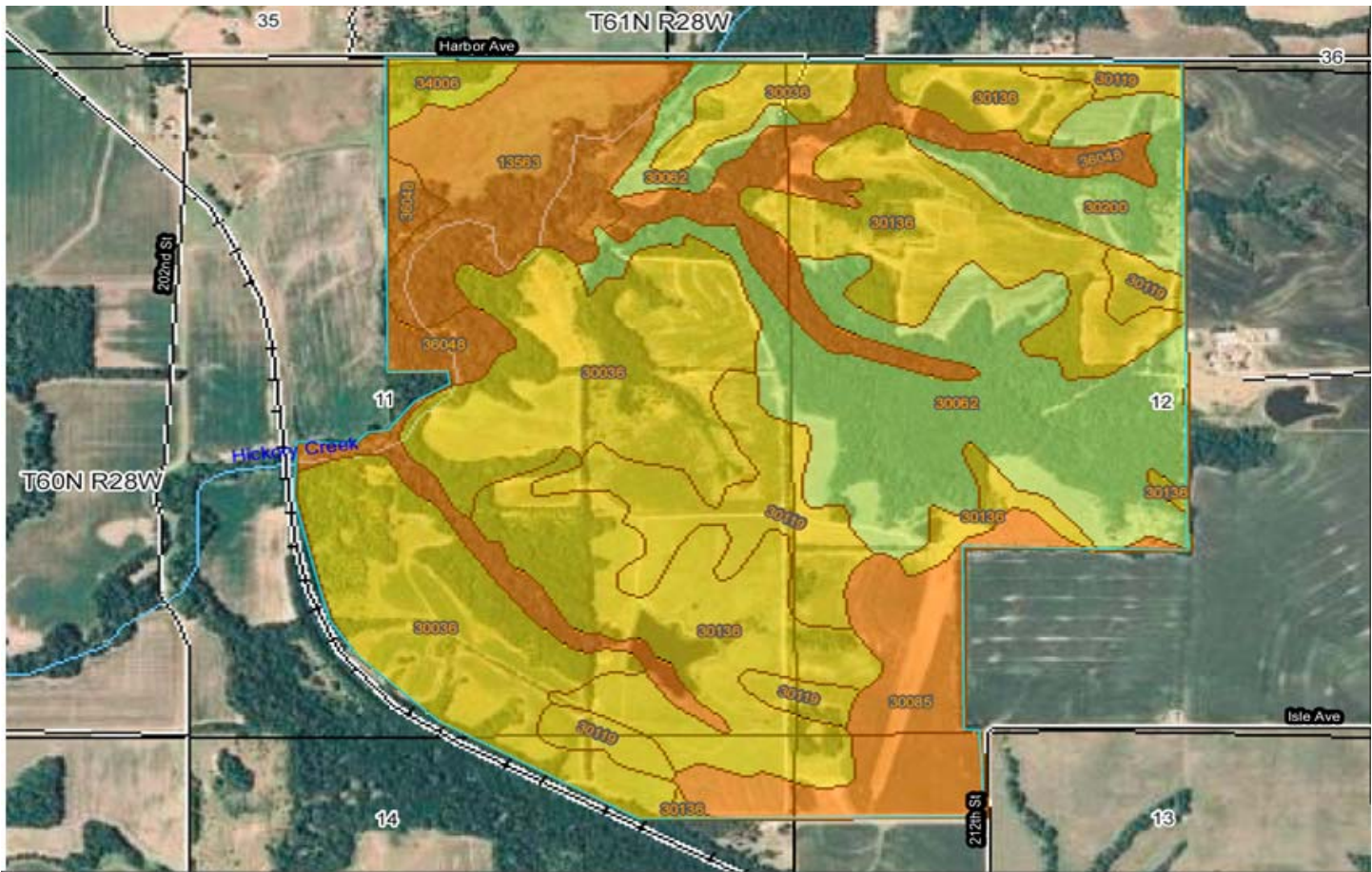
***Setting the trend for how Real Estate is Sold in the Midwest.***

This information is thought to be accurate; however it is subject to verification and no liability for errors and omissions is assumed. Barnes Realty has made every effort to present accurate information on the property presented. Most of the information comes from outside sources: County/Government/Seller and human error can occur. It's the Buyer's responsibility to satisfy himself with the information presented and to determine the information to be true and accurate and the property to be suited for his intended use. The listing may be withdrawn with or without approval. The seller further reserves the right to reject any and all offers. All inquiries, inspections, appointments, and offers must be sent through: Rick Barnes, BARNES REALTY COMPANY 18156 Hwy 59, MOUND CITY, MO 64470  
PHONE NUMBER: 1-660-442-3177



# *McDowell Investments, 607 acres m/l, Daviees CO MO*

## *NRCS Rating Map and Rating Key*



Nonirrigated Capability Class— Summary by Map Unit — Daviess County, Missouri				
Map unit symbol	Map unit name	Rating	Acres in AOI	Percent of AOI
13563	Nodaway silt loam, 0 to 2 percent slopes, occasionally flooded	2	50.4	8.3%
30036	Armstrong loam, 5 to 9 percent slopes	3	138.1	22.8%
30062	Gara loam, 9 to 14 percent slopes	4	105.2	17.3%
30085	Grundy silt loam, 2 to 5 percent slopes	2	44.5	7.3%
30119	Lagonda silty clay loam, 2 to 5 percent slopes, eroded	3	50.8	8.4%
30136	Lamoni loam, 5 to 9 percent slopes	3	132.8	21.9%
30200	Shelby loam, 9 to 14 percent slopes	4	24.0	4.0%
34006	Gifford silt loam, 5 to 9 percent slopes	3	6.5	1.1%
36048	Zook silt loam, 0 to 2 percent slopes, occasionally flooded	2	54.3	9.0%
<b>Totals for Area of Interest</b>			<b>606.6</b>	<b>100.0%</b>

### *Setting the trend for how Real Estate is Sold in the Midwest.*

This information is thought to be accurate; however it is subject to verification and no liability for errors and omissions is assumed. Barnes Realty has made every effort to present accurate information on the property presented. Most of the information comes from outside sources: County/Government/Seller and human error can occur. It's the Buyer's responsibility to satisfy himself with the information presented and to determine the information to be true and accurate and the property to be suited for his intended use. The listing may be withdrawn with or without approval. The seller further reserves the right to reject any and all offers. All inquiries, inspections, appointments, and offers must be sent through: Rick Barnes, BARNES REALTY COMPANY 18156 Hwy 59, MOUND CITY, MO 64470  
PHONE NUMBER: 1-660-442-3177



***McDowell Investments, 607 acres m/l, Daviees CO MO***  
***FSA Aerial – Farm 285: Tract 1670***



***Setting the trend for how Real Estate is Sold in the Midwest.***

This information is thought to be accurate; however it is subject to verification and no liability for errors and omissions is assumed. Barnes Realty has made every effort to present accurate information on the property presented. Most of the information comes from outside sources: County/Government/Seller and human error can occur. It's the Buyer's responsibility to satisfy himself with the information presented and to determine the information to be true and accurate and the property to be suited for his intended use. The listing may be withdrawn with or without approval. The seller further reserves the right to reject any and all offers. All inquiries, inspections, appointments, and offers must be sent through: Rick Barnes, BARNES REALTY COMPANY 18156 Hwy 59, MOUND CITY, MO 64470  
PHONE NUMBER: 1-660-442-3177



***McDowell Investments, 607 acres m/l, Daviees CO MO***  
***FSA Aerial – Farm 285: Tract 1672***



***Setting the trend for how Real Estate is Sold in the Midwest.***

This information is thought to be accurate; however it is subject to verification and no liability for errors and omissions is assumed. Barnes Realty has made every effort to present accurate information on the property presented. Most of the information comes from outside sources: County/Government/Seller and human error can occur. It's the Buyer's responsibility to satisfy himself with the information presented and to determine the information to be true and accurate and the property to be suited for his intended use. The listing may be withdrawn with or without approval. The seller further reserves the right to reject any and all offers. All inquiries, inspections, appointments, and offers must be sent through: Rick Barnes, BARNES REALTY COMPANY 18156 Hwy 59, MOUND CITY, MO 64470  
PHONE NUMBER: 1-660-442-3177



# *McDowell Investments, 607 acres m/l, Daviees CO MO*

## *FSA 156 EZ – Farm 285: Tract 1670 & Tract 1672*

Tract Number: 1670      Description G5 S11-T60-R28      Farm 285      FAV/WR History  
 BIA Range Unit Number:      N  
 HEL Status: HEL: conservation system is being actively applied  
 Wetland Status: Tract contains a wetland or farmed wetland  
 WL Violations: None

Farmland	Cropland	DCP Cropland	WBP	WRP/EWP	CRP Cropland	GRP
109.0	42.4	42.4	0.0	0.0	0.0	0.0
State Conservation	Other Conservation	Effective DCP Cropland	Double Cropped	NAP	MPL/FWP	
0.0	0.0	42.4	0.0	0.0	0.0	

Crop	Base Acreage	Direct Yield	CC Yield	CRP Reduction	CRP Pending	CRP Yield	CCC-505 CRP Reduction
WHEAT	1.1	40	40	0.0	0.0	0	0.0
CORN	0.6	89	89	0.0	0.0	0	0.0
GRAIN SORGHUM	0.4	75	75	0.0	0.0	0	0.0
<b>Total Base Acres:</b>	2.1						

Owners: MCDOWELL INVESTMENTS LP  
 Other Producers: None

Tract Number: 1672      Description H5 S12,13-T60-R28      Farm 285      FAV/WR History  
 BIA Range Unit Number:      N  
 HEL Status: HEL: conservation system is being actively applied  
 Wetland Status: Tract does not contain a wetland  
 WL Violations: None

Farmland	Cropland	DCP Cropland	WBP	WRP/EWP	CRP Cropland	GRP
132.0	68.2	68.2	0.0	0.0	0.0	0.0
State Conservation	Other Conservation	Effective DCP Cropland	Double Cropped	NAP	MPL/FWP	
0.0	0.0	68.2	0.0	0.0	0.0	

Crop	Base Acreage	Direct Yield	CC Yield	CRP Reduction	CRP Pending	CRP Yield	CCC-505 CRP Reduction
WHEAT	23.2	40	40	0.0	0.0	0	0.0
CORN	13.7	89	89	0.0	0.0	0	0.0
GRAIN SORGHUM	10.9	75	75	0.0	0.0	0	0.0
<b>Total Base Acres:</b>	47.8						

Owners: MCDOWELL INVESTMENTS LP  
 Other Producers: None

### *Setting the trend for how Real Estate is Sold in the Midwest.*

This information is thought to be accurate; however it is subject to verification and no liability for errors and omissions is assumed. Barnes Realty has made every effort to present accurate information on the property presented. Most of the information comes from outside sources: County/Government/Seller and human error can occur. It's the Buyer's responsibility to satisfy himself with the information presented and to determine the information to be true and accurate and the property to be suited for his intended use. The listing may be withdrawn with or without approval. The seller further reserves the right to reject any and all offers. All inquiries, inspections, appointments, and offers must be sent through: Rick Barnes, BARNES REALTY COMPANY 18156 Hwy 59, MOUND CITY, MO 64470  
 PHONE NUMBER: 1-660-442-3177



# McDowell Investments, 607 acres m/l, Daviees CO MO

## FSA 578 – Farm 285: Tract 1670 & 1672

Davies, Missouri

FSA - 578 (02-01-91)

Farm Number: 285

Operator Name and Address

KEVIN HELDENBRAND  
29559 145TH ST  
WINSTON, MO 64689-9114

PROGRAM YEAR: 2011

DATE: 1-10-2012  
PAGE: 1

Original: \_\_\_\_\_  
Revision: \_\_\_\_\_  
Cropland: 110.6  
Farmland: 241.0

### REPORT OF COMMODITIES FARM AND TRACT DETAIL LISTING

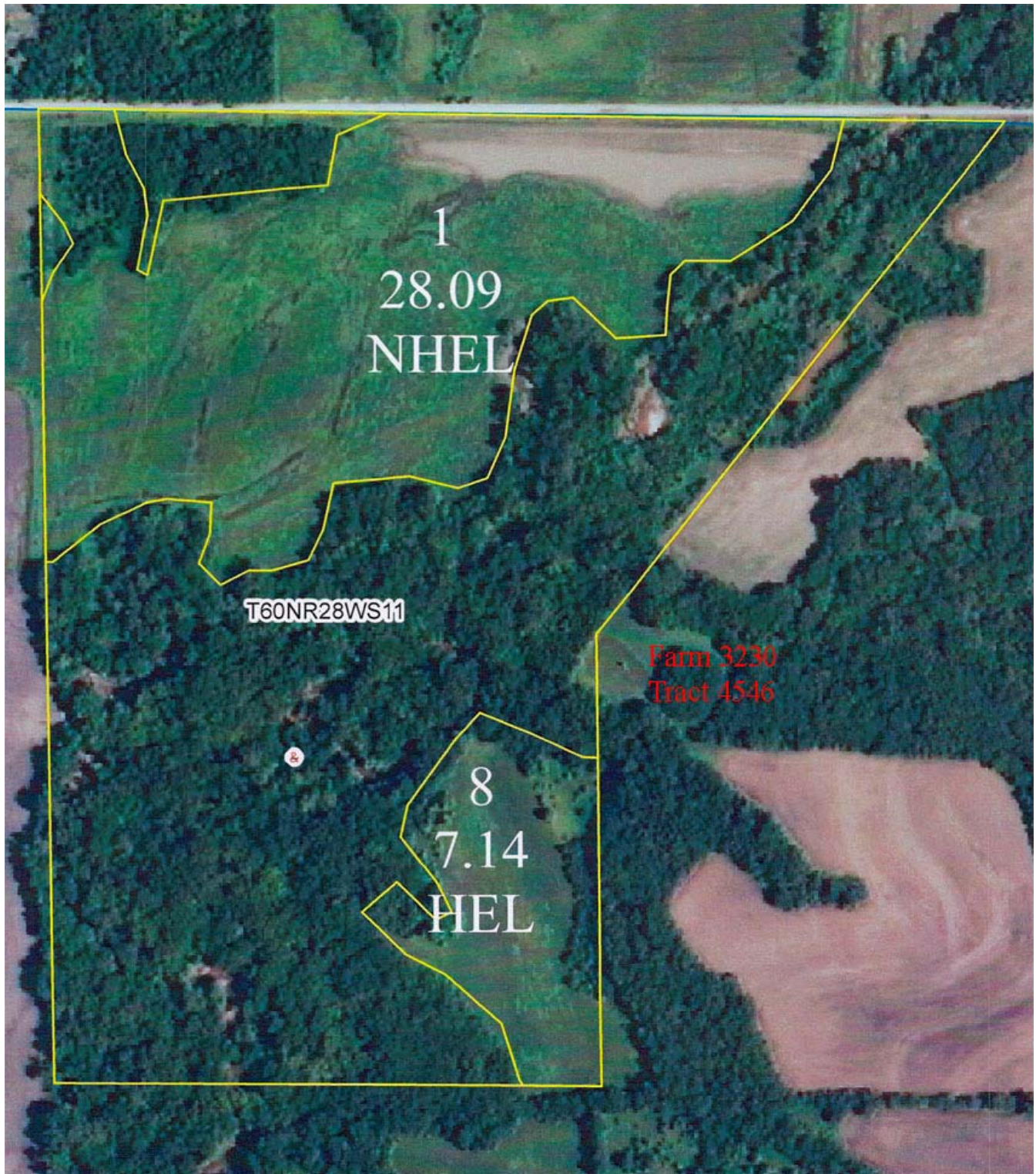
Tract Number	CLU/Field	Crop/Commodity	Variety/Type	Irr Prc	Int Use	Actual Use	Land Use	C/C Status	Reporting Unit	Reported Quantity	Determined Quantity	Crop Land	Official /Measured	Planting Date	Planting Period	End Date	
1670	1	SOYBN	COM	N	GR			I	A	7.41		Yes		5-10-2011			
		Producer	KEVIN HELDENBRAND						Share 100.00		RMA Unit						
	1A	MIXFG	IGS	N	FG			I	A	3.98		Yes		6-10-2011			
		Producer	KEVIN HELDENBRAND						Share 100.00		RMA Unit						
	2	MIXFG	IGS	N	FG			I	A	2.92		Yes		6-10-2011			
		Producer	KEVIN HELDENBRAND						Share 100.00		RMA Unit						
	3	MIXFG	IGS	N	FG			I	A	18.83		Yes		6-10-2011			
		Producer	KEVIN HELDENBRAND						Share 100.00		RMA Unit						
	4A	SOYBN	COM	N	GR			I	A	3.50		Yes		5-10-2011			
		Producer	KEVIN HELDENBRAND						Share 100.00		RMA Unit						
4B	MIXFG	IGS	N	FG			I	A	5.93		Yes		6-10-2011				
	Producer	KEVIN HELDENBRAND						Share 100.00		RMA Unit							
Cri/Co	Var/Type	Irr Prc	Int Use	Non-Irrig	Irrigated	Cri/Co	Var/Type	Irr Prc	Int Use	Non-Irrig	Irrigated	Cri/Co	Var/Type	Irr Prc	Int Use	Non-Irrig	Irrigated
MIXFG	IGS	N	FG	31.66		SOYBN	COM	N	GR	10.91							
Photo Number/Legal Description: GS S11-T60-R28																	
Cropland: 42.40						Reported on Cropland: 42.57						Difference: 0.17		Reported on Non-Cropland: 0			
1672	1A	MIXFG	IGS	N	FG			I	A	2.78		Yes		6-10-2011			
		Producer	KEVIN HELDENBRAND						Share 100.00		RMA Unit						
	1B	SOYBN	COM	N	GR			I	A	5.39		Yes		5-10-2011			
		Producer	KEVIN HELDENBRAND						Share 100.00		RMA Unit						
	1C	SOYBN	COM	N	GR			I	A	2.40		Yes		5-10-2011			
		Producer	KEVIN HELDENBRAND						Share 100.00		RMA Unit						
	2A	MIXFG	IGS	N	FG			I	A	4.19		Yes		6-10-2011			
		Producer	KEVIN HELDENBRAND						Share 100.00		RMA Unit						
	2B	SOYBN	COM	N	GR			I	A	6.58		Yes		5-10-2011			
		Producer	KEVIN HELDENBRAND						Share 100.00		RMA Unit						
	4A	MIXFG	IGS	N	FG			I	A	1.43		Yes		6-10-2011			
		Producer	KEVIN HELDENBRAND						Share 100.00		RMA Unit						
	4B	SOYBN	COM	N	GR			I	A	1.00		Yes		5-10-2011			
		Producer	KEVIN HELDENBRAND						Share 100.00		RMA Unit						
5A	SOYBN	COM	N	GR			I	A	38.00		Yes		5-10-2011				
	Producer	KEVIN HELDENBRAND						Share 100.00		RMA Unit							
5B	MIXFG	IGS	N	FG			I	A	6.35		Yes		6-10-2011				
Tract Number	CLU/Field	Crop/Commodity	Variety/Type	Irr Prc	Int Use	Actual Use	Land Use	C/C Status	Reporting Unit	Reported Quantity	Determined Quantity	Crop Land	Official /Measured	Planting Date	Planting Period	End Date	
		Producer	KEVIN HELDENBRAND						Share 100.00		RMA Unit						
Cri/Co	Var/Type	Irr Prc	Int Use	Non-Irrig	Irrigated	Cri/Co	Var/Type	Irr Prc	Int Use	Non-Irrig	Irrigated	Cri/Co	Var/Type	Irr Prc	Int Use	Non-Irrig	Irrigated
MIXFG	IGS	N	FG	14.75		SOYBN	COM	N	GR	53.37							
Photo Number/Legal Description: HS S12,13-T60-R28																	
Cropland: 68.20						Reported on Cropland: 68.12						Difference: -0.08		Reported on Non-Cropland: 0			

### Setting the trend for how Real Estate is Sold in the Midwest.

This information is thought to be accurate; however it is subject to verification and no liability for errors and omissions is assumed. Barnes Realty has made every effort to present accurate information on the property presented. Most of the information comes from outside sources: County/Government/Seller and human error can occur. It's the Buyer's responsibility to satisfy himself with the information presented and to determine the information to be true and accurate and the property to be suited for his intended use. The listing may be withdrawn with or without approval. The seller further reserves the right to reject any and all offers. All inquiries, inspections, appointments, and offers must be sent through: Rick Barnes, BARNES REALTY COMPANY 18156 Hwy 59, MOUND CITY, MO 64470  
PHONE NUMBER: 1-660-442-3177



***McDowell Investments, 607 acres m/l, Daviees CO MO***  
***FSA Aerial – Farm 3230: Tract 4546***



***Setting the trend for how Real Estate is Sold in the Midwest.***

This information is thought to be accurate; however it is subject to verification and no liability for errors and omissions is assumed. Barnes Realty has made every effort to present accurate information on the property presented. Most of the information comes from outside sources: County/Government/Seller and human error can occur. It's the Buyer's responsibility to satisfy himself with the information presented and to determine the information to be true and accurate and the property to be suited for his intended use. The listing may be withdrawn with or without approval. The seller further reserves the right to reject any and all offers. All inquiries, inspections, appointments, and offers must be sent through: Rick Barnes, BARNES REALTY COMPANY 18156 Hwy 59, MOUND CITY, MO 64470  
PHONE NUMBER: 1-660-442-3177



# *McDowell Investments, 607 acres m/l, Daviess CO MO*

## *FSA 156EZ – Farm 3230: Tract 4546*

<b>Missouri</b> <b>Daviess</b> <b>Report ID: FSA-156EZ</b>	<b>U.S. Department of Agriculture</b> <b>Farm Service Agency</b> <b>Abbreviated 156 Farm Record</b>	<b>FARM: 3230</b> <b>Prepared: 1/10/12 8:07 AM</b> <b>Crop Year: 2012</b> <b>Page: 1 of 1</b>
--	---	--

<b>Operator Name</b>	<b>Farm Identifier</b>	<b>Recon Number</b>
MCDOWELL INVESTMENTS LP	G-5	
<b>Farms Associated with Operator:</b>		
285, 2886, 3231, 3899, 3900, 4157, 5115		
<b>CRP Contract Number(s):</b> None		

Farmland	Cropland	DCP Cropland	WBP	WRP/EWP	CRP Cropland	GRP	Farm Status	Number of Tracts
81.0	35.2	35.2	0.0	0.0	0.0	0.0	Active	1
State Conservation	Other Conservation	Effective DCP Cropland	Double Cropped	NAP	MPL/FWP		FAV/WR History	ACRE Election
0.0	0.0	35.2	0.0	0.0	0.0		N	None

<b>Tract Number:</b> 4546	<b>Description</b> G5 S11,12-T60-R28	<b>FAV/WR History</b>
<b>BIA Range Unit Number:</b>		N
<b>HEL Status:</b> HEL: conservation system is being actively applied		
<b>Wetland Status:</b> Tract contains a wetland or farmed wetland		
<b>WL Violations:</b> None		

Farmland	Cropland	DCP Cropland	WBP	WRP/EWP	CRP Cropland	GRP
81.0	35.2	35.2	0.0	0.0	0.0	0.0
State Conservation	Other Conservation	Effective DCP Cropland	Double Cropped	NAP	MPL/FWP	
0.0	0.0	35.2	0.0	0.0	0.0	

**Owners:** MCDOWELL INVESTMENTS LP

**Other Producers:** KEVIN HELDENBRAND

### *Setting the trend for how Real Estate is Sold in the Midwest.*

This information is thought to be accurate; however it is subject to verification and no liability for errors and omissions is assumed. Barnes Realty has made every effort to present accurate information on the property presented. Most of the information comes from outside sources: County/Government/Seller and human error can occur. It's the Buyer's responsibility to satisfy himself with the information presented and to determine the information to be true and accurate and the property to be suited for his intended use. The listing may be withdrawn with or without approval. The seller further reserves the right to reject any and all offers. All inquiries, inspections, appointments, and offers must be sent through: Rick Barnes, BARNES REALTY COMPANY 18156 Hwy 59, MOUND CITY, MO 64470

PHONE NUMBER: 1-660-442-3177



# McDowell Investments, 607 acres m/l, Daviees CO MO

## FSA 578 – Farm 3230: Tract 4546

Davies, Missouri

**FSA - 578 (02-01-91)**

**Farm Number: 3230**

Operator Name and Address

MCDOWELL INVESTMENTS LP  
1235 W 55TH ST  
KANSAS CITY, MO 64113-1106

PROGRAM YEAR: 2011

DATE: 1-10-2012  
PAGE: 1

Original: \_\_\_\_\_  
Revision: \_\_\_\_\_  
Cropland: 35.2  
Farmland: 81.0

### REPORT OF COMMODITIES FARM AND TRACT DETAIL LISTING

Tract Number	CLU/Field	Crop/Commodity	Variety/Type	Irr Prc	Int Use	Actual Use	Land Use	C/C Status	Reporting Unit	Reported Quantity	Determined Quantity	Crop Land	Official /Measured	Planting Date	Planting Period	End Date	
4546	1	MIXFG	IGS	N	FG			I	A	28.09		Yes		6-10-2011			
		Producer KEVIN HELDENBRAND															
	8A	MIXFG	IGS	N	FG			I	A	4.74		Yes		6-10-2011			
		Producer KEVIN HELDENBRAND															
	8B	SOYBN	COM	N	GR			I	A	2.40		Yes		5-10-2011			
		Producer KEVIN HELDENBRAND															
									Share	100.00		RMA Unit					
									Share	100.00		RMA Unit					
									Share	100.00		RMA Unit					
Cri/Co	Var/Type	Irr Prc	Int Use	Non-Irrig	Irrigated	Cri/Co	Var/Type	Irr Prc	Int Use	Non-Irrig	Irrigated	Cri/Co	Var/Type	Irr Prc	Int Use	Non-Irrig	Irrigated
MIXFG	IGS	N	FG	32.83		SOYBN	COM	N	GR	2.40							
Photo Number/Legal Description: G5 S11,12-T60-R28																	
Cropland: 35.20						Reported on Cropland: 35.23						Difference: 0.03			Reported on Non-Cropland: 0		

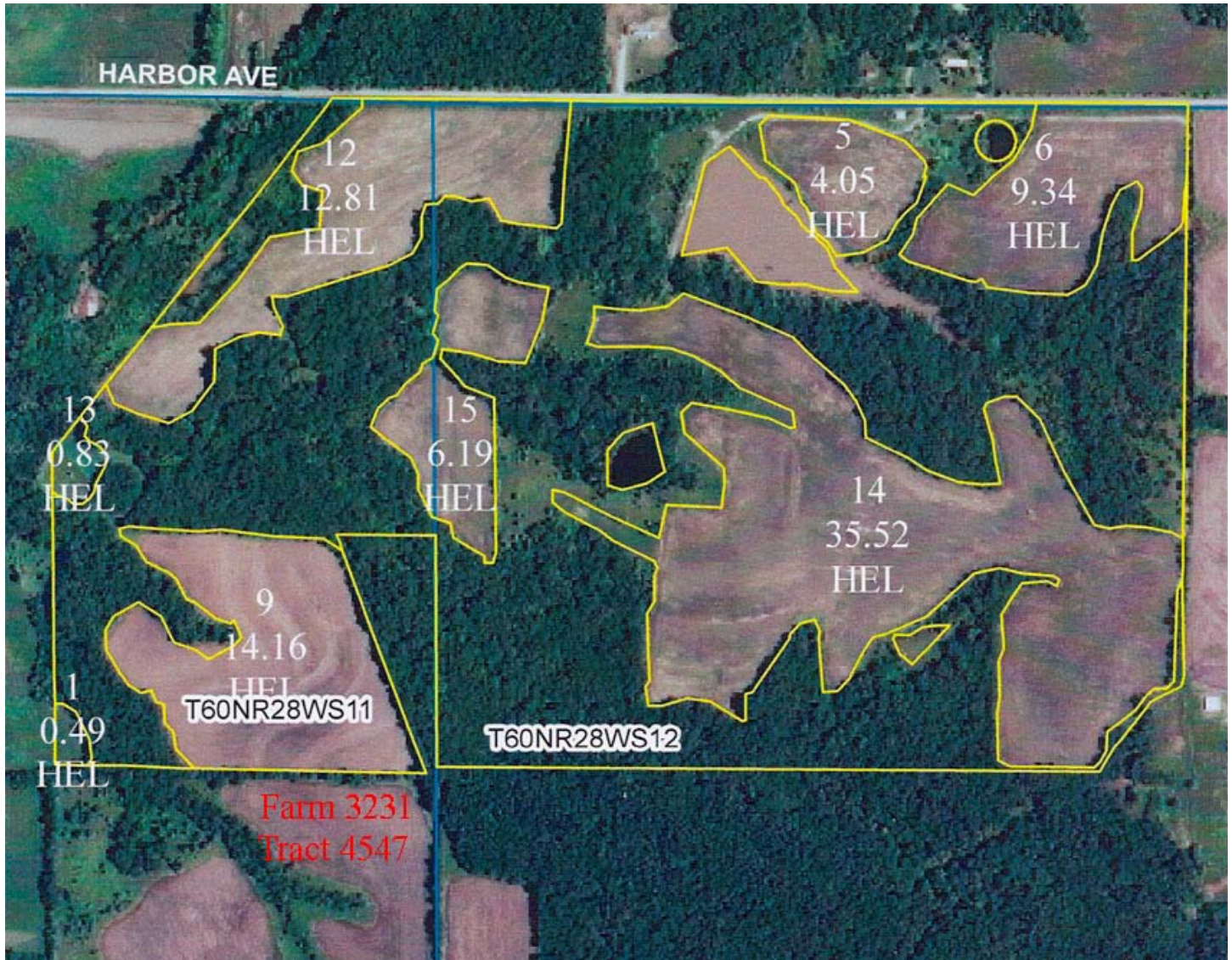


### *Setting the trend for how Real Estate is Sold in the Midwest.*

This information is thought to be accurate; however it is subject to verification and no liability for errors and omissions is assumed. Barnes Realty has made every effort to present accurate information on the property presented. Most of the information comes from outside sources: County/Government/Seller and human error can occur. It's the Buyer's responsibility to satisfy himself with the information presented and to determine the information to be true and accurate and the property to be suited for his intended use. The listing may be withdrawn with or without approval. The seller further reserves the right to reject any and all offers. All inquiries, inspections, appointments, and offers must be sent through: Rick Barnes, BARNES REALTY COMPANY 18156 Hwy 59, MOUND CITY, MO 64470  
PHONE NUMBER: 1-660-442-3177



***McDowell Investments, 607 acres m/l, Daviees CO MO***  
***FSA Aerial – Farm 3231: Tract 4547***



***Setting the trend for how Real Estate is Sold in the Midwest.***

This information is thought to be accurate; however it is subject to verification and no liability for errors and omissions is assumed. Barnes Realty has made every effort to present accurate information on the property presented. Most of the information comes from outside sources: County/Government/Seller and human error can occur. It's the Buyer's responsibility to satisfy himself with the information presented and to determine the information to be true and accurate and the property to be suited for his intended use. The listing may be withdrawn with or without approval. The seller further reserves the right to reject any and all offers. All inquiries, inspections, appointments, and offers must be sent through: Rick Barnes, BARNES REALTY COMPANY 18156 Hwy 59, MOUND CITY, MO 64470  
PHONE NUMBER: 1-660-442-3177



# McDowell Investments, 607 acres m/l, Daviees CO MO

## FSA 156EZ – Farm 3231: Tract 4547

Missouri Daviess Report ID: FSA-156EZ	U.S. Department of Agriculture Farm Service Agency <b>Abbreviated 156 Farm Record</b>	<b>FARM: 3231</b> Prepared: 1/10/12 8:07 AM Crop Year: 2012 Page: 1 of 1
---	---	---

<b>Operator Name</b> KEVIN HELDENBRAND	<b>Farm Identifier</b> G-5	<b>Recon Number</b>  
<b>Farms Associated with Operator:</b> 285, 1004, 3230, 4157, 4212, 4213, 4489, 4521, 4553, 5115		
<b>CRP Contract Number(s):</b> None		

Farmland	Cropland	DCP Cropland	WBP	WRP/EWP	CRP Cropland	GRP	Farm Status	Number of Tracts
189.0	83.4	83.4	0.0	0.0	0.0	0.0	Active	1
State Conservation	Other Conservation	Effective DCP Cropland	Double Cropped	NAP	MPL/FWP		FAV/WR History	ACRE Election
0.0	0.0	83.4	0.0	0.0	0.0		N	None

Crop	Base Acreage	CRP Reduction	CRP Pending	Direct Yield	CC Yield	CCC-505 CRP Reduction
WHEAT	44.4	0.0	0.0	40	40	0.0
CORN	4.8	0.0	0.0	84	84	0.0
GRAIN SORGHUM	1.9	0.0	0.0	70	70	0.0
SOYBEANS	32.0	0.0	0.0	22	22	0.0
<b>Total Base Acres:</b>	83.1					

**Tract Number:** 4547      **Description** G5 S11,12-T60-R28      **FAV/WR History** N  
**BIA Range Unit Number:**  
**HEL Status:** HEL Determinations not complete  
**Wetland Status:** Tract contains a wetland or farmed wetland  
**WL Violations:** None

Farmland	Cropland	DCP Cropland	WBP	WRP/EWP	CRP Cropland	GRP
189.0	83.4	83.4	0.0	0.0	0.0	0.0
State Conservation	Other Conservation	Effective DCP Cropland	Double Cropped	NAP	MPL/FWP	
0.0	0.0	83.4	0.0	0.0	0.0	

Crop	Base Acreage	Direct Yield	CC Yield	CRP Reduction	CRP Pending	CRP Yield	CCC-505 CRP Reduction
WHEAT	44.4	40	40	0.0	0.0	0	0.0
CORN	4.8	84	84	0.0	0.0	0	0.0
GRAIN SORGHUM	1.9	70	70	0.0	0.0	0	0.0
SOYBEANS	32.0	22	22	0.0	0.0	0	0.0
<b>Total Base Acres:</b>	83.1						

**Owners:** MCDOWELL INVESTMENTS LP  
**Other Producers:** None

### Setting the trend for how Real Estate is Sold in the Midwest.

This information is thought to be accurate; however it is subject to verification and no liability for errors and omissions is assumed. Barnes Realty has made every effort to present accurate information on the property presented. Most of the information comes from outside sources: County/Government/Seller and human error can occur. It's the Buyer's responsibility to satisfy himself with the information presented and to determine the information to be true and accurate and the property to be suited for his intended use. The listing may be withdrawn with or without approval. The seller further reserves the right to reject any and all offers. All inquiries, inspections, appointments, and offers must be sent through: Rick Barnes, BARNES REALTY COMPANY 18156 Hwy 59, MOUND CITY, MO 64470  
 PHONE NUMBER: 1-660-442-3177

# McDowell Investments, 607 acres m/l, Daviees CO MO

## FSA 578 – Farm 3231: Tract 4547

Davies, Missouri

FSA - 578 (02-01-91)

Farm Number: 3231

Operator Name and Address

KEVIN HELDENBRAND  
29559 145TH ST  
WINSTON, MO 64689-9114

PROGRAM YEAR: 2011

DATE: 1-10-2012  
PAGE: 1

Original: \_\_\_\_\_  
Revision: \_\_\_\_\_  
Cropland: 83.4  
Farmland: 189.0

### REPORT OF COMMODITIES FARM AND TRACT DETAIL LISTING

Tract Number	CLU/Field	Crop/Commodity	Variety/Type	Irr Prc	Int Use	Actual Use	Land Use	C/C Status	Reporting Unit	Reported Quantity	Determined Quantity	Crop Land	Official /Measured	Planting Date	Planting Period	End Date			
4547	1	WLDFF		N				I	A	0.49		Yes		6-10-2011					
		Producer	KEVIN HELDENBRAND						Share 100.00		RMA Unit								
	5	SOYBN	COM	N	GR			I	A	4.05		Yes		5-10-2011					
		Producer	KEVIN HELDENBRAND						Share 100.00		RMA Unit								
	6	SOYBN	COM	N	GR			I	A	9.34		Yes		5-10-2011					
		Producer	KEVIN HELDENBRAND						Share 100.00		RMA Unit								
	9	SOYBN	COM	N	GR			I	A	14.16		Yes		5-10-2011					
		Producer	KEVIN HELDENBRAND						Share 100.00		RMA Unit								
	12	SOYBN	COM	N	GR			I	A	12.81		Yes		5-10-2011					
		Producer	KEVIN HELDENBRAND						Share 100.00		RMA Unit								
	13	WLDFF		N				I	A	0.83		Yes		6-10-2011					
		Producer	KEVIN HELDENBRAND						Share 100.00		RMA Unit								
	14A	MIXFG	IGS	N	FG			I	A	0.60		Yes		6-10-2011					
		Producer	KEVIN HELDENBRAND						Share 100.00		RMA Unit								
14B	SOYBN	COM	N	GR			I	A	34.92		Yes		5-10-2011						
	Producer	KEVIN HELDENBRAND						Share 100.00		RMA Unit									
15	SOYBN	COM	N	GR			I	A	6.19		Yes		5-10-2011						
	Producer	KEVIN HELDENBRAND						Share 100.00		RMA Unit									
Cr/Co	Var/Type	Irr Prc	Int Use	Non-Irrig	Irrigated	Cr/Co	Var/Type	Irr Prc	Int Use	Non-Irrig	Irrigated	Cr/Co	Var/Type	Irr Prc	Int Use	Non-Irrig	Irrigated		
MIXFG	IGS	N	FG	0.60		WLDFF		N		1.32		SOYBN	COM	N	GR	81.47			
Photo Number/Legal Description: G5 S11,12-T60-R28																			
Cropland: 83.40						Reported on Cropland: 83.39						Difference: -0.01						Reported on Non-Cropland: 0	

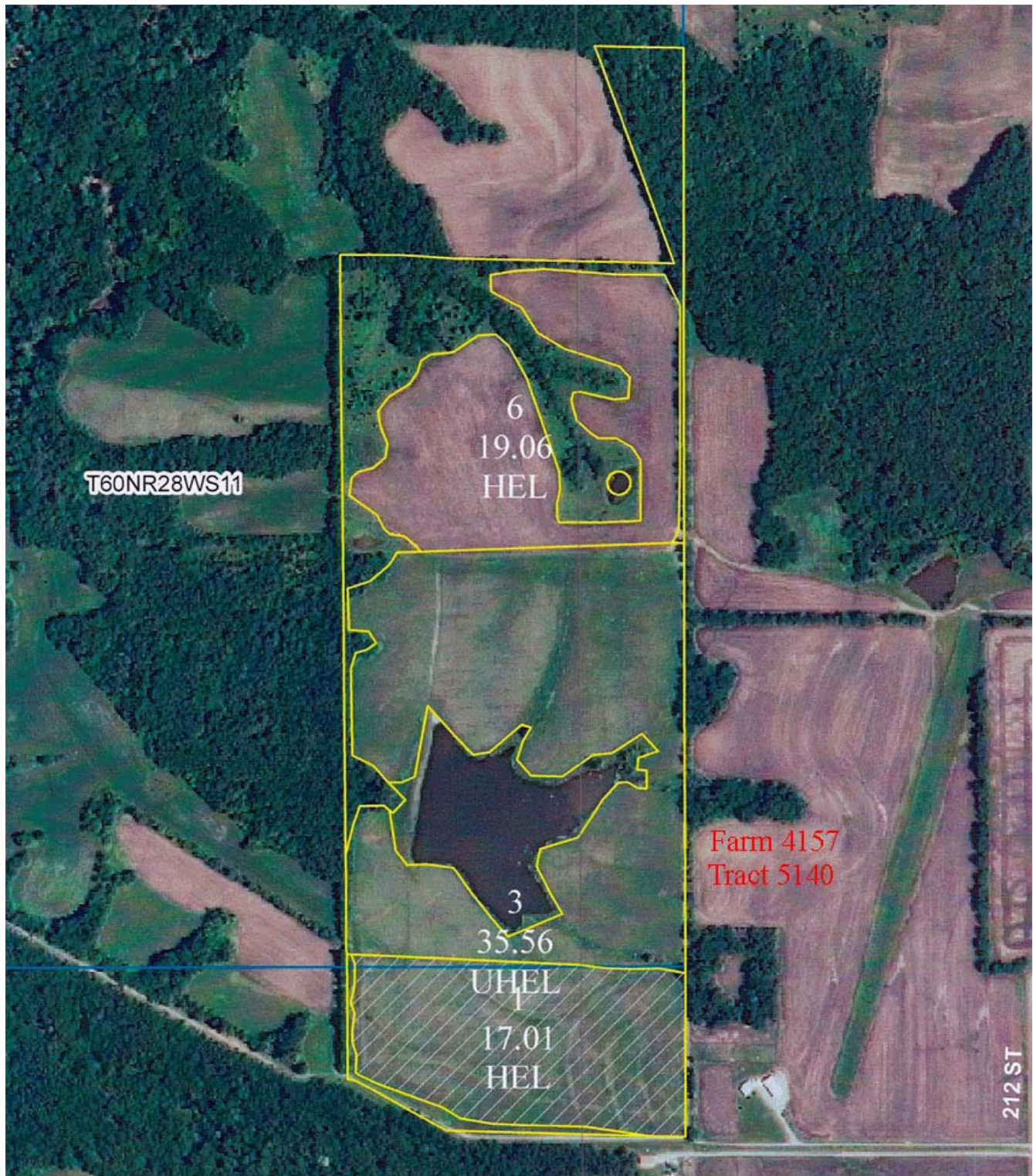


*Setting the trend for how Real Estate is Sold in the Midwest.*

This information is thought to be accurate; however it is subject to verification and no liability for errors and omissions is assumed. Barnes Realty has made every effort to present accurate information on the property presented. Most of the information comes from outside sources: County/Government/Seller and human error can occur. It's the Buyer's responsibility to satisfy himself with the information presented and to determine the information to be true and accurate and the property to be suited for his intended use. The listing may be withdrawn with or without approval. The seller further reserves the right to reject any and all offers. All inquiries, inspections, appointments, and offers must be sent through: Rick Barnes, BARNES REALTY COMPANY 18156 Hwy 59, MOUND CITY, MO 64470  
PHONE NUMBER: 1-660-442-3177



***McDowell Investments, 607 acres m/l, Daviees CO MO***  
***FSA Aerial – Farm 4157: Tract 5140***



***Setting the trend for how Real Estate is Sold in the Midwest.***

This information is thought to be accurate; however it is subject to verification and no liability for errors and omissions is assumed. Barnes Realty has made every effort to present accurate information on the property presented. Most of the information comes from outside sources: County/Government/Seller and human error can occur. It's the Buyer's responsibility to satisfy himself with the information presented and to determine the information to be true and accurate and the property to be suited for his intended use. The listing may be withdrawn with or without approval. The seller further reserves the right to reject any and all offers. All inquiries, inspections, appointments, and offers must be sent through: Rick Barnes, BARNES REALTY COMPANY 18156 Hwy 59, MOUND CITY, MO 64470  
PHONE NUMBER: 1-660-442-3177



# McDowell Investments, 607 acres m/l, Daviees CO MO

## FSA 156EZ – Farm 4157: Tract 5140

Missouri	U.S. Department of Agriculture	FARM: 4157
Davieess	Farm Service Agency	Prepared: 1/10/12 8:07 AM
Report ID: FSA-156EZ	Abbreviated 156 Farm Record	Crop Year: 2012
		Page: 1 of 1

Operator Name					Farm Identifier		Recon Number	
KEVIN HELDENBRAND					G5 S11,14-T60-R28			
Farms Associated with Operator:								
285, 1004, 3230, 3231, 4212, 4213, 4489, 4521, 4553, 5115								
CRP Contract Number(s): 1865A								
Farmland	Cropland	DCP Cropland	WBP	WRP/EWP	CRP Cropland	GRP	Farm Status	Number of Tracts
103.0	71.7	71.7	0.0	0.0	17.0	0.0	Active	1
State Conservation	Other Conservation	Effective DCP Cropland	Double Cropped	NAP	MPL/FWP		FAV/WR History	ACRE Election
0.0	0.0	54.7	0.0	0.0	0.0		N	None

Crop	Base Acreage	CRP Reduction	CRP Pending	Direct Yield	CC Yield	CCC-505 CRP Reduction
WHEAT	2.8	0.0	0.0	38	38	0.0
CORN	15.9	0.0	0.0	89	89	0.0
SOYBEANS	4.2	0.0	0.0	27	27	0.0
Total Base Acres:	22.9					

Tract Number: 5140	Description G5 S11,14-T60-R28	FAV/WR History
BIA Range Unit Number:		N
HEL Status:	HEL: conservation system is being actively applied	
Wetland Status:	Tract does not contain a wetland	
WL Violations:	None	

Farmland	Cropland	DCP Cropland	WBP	WRP/EWP	CRP Cropland	GRP
103.0	71.7	71.7	0.0	0.0	17.0	0.0
State Conservation	Other Conservation	Effective DCP Cropland	Double Cropped	NAP	MPL/FWP	
0.0	0.0	54.7	0.0	0.0	0.0	

Crop	Base Acreage	Direct Yield	CC Yield	CRP Reduction	CRP Pending	CRP Yield	CCC-505 CRP Reduction
WHEAT	2.8	38	38	0.0	0.0	0	0.0
CORN	15.9	89	89	0.0	0.0	0	0.0
SOYBEANS	4.2	27	27	0.0	0.0	0	0.0
Total Base Acres:	22.9						

Owners: MCDOWELL INVESTMENTS LP  
Other Producers: None

### Setting the trend for how Real Estate is Sold in the Midwest.

This information is thought to be accurate; however it is subject to verification and no liability for errors and omissions is assumed. Barnes Realty has made every effort to present accurate information on the property presented. Most of the information comes from outside sources: County/Government/Seller and human error can occur. It's the Buyer's responsibility to satisfy himself with the information presented and to determine the information to be true and accurate and the property to be suited for his intended use. The listing may be withdrawn with or without approval. The seller further reserves the right to reject any and all offers. All inquiries, inspections, appointments, and offers must be sent through: Rick Barnes, BARNES REALTY COMPANY 18156 Hwy 59, MOUND CITY, MO 64470  
PHONE NUMBER: 1-660-442-3177



# McDowell Investments, 607 acres m/l, Daviees CO MO

## FSA 578 – Farm 4157: Tract 5140

Daviees, Missouri

FSA - 578 (02-01-91)

Farm Number: 4157

Operator Name and Address

KEVIN HELDENBRAND  
29559 145TH ST  
WINSTON, MO 64689-9114

### REPORT OF COMMODITIES FARM AND TRACT DETAIL LISTING

PROGRAM YEAR: 2011

DATE: 1-10-2012

PAGE: 1

Original: \_\_\_\_\_  
Revision: \_\_\_\_\_  
Cropland: 71.7  
Farmland: 103.0

Tract Number	CLU/Field	Crop/Commodity	Variety/Type	Irr Prc	Int Use	Actual Use	Land Use	C/C Status	Reporting Unit	Reported Quantity	Determined Quantity	Crop Land	Official /Measured	Planting Date	Planting Period	End Date	
5140	1A	CRP		N	2			IN	A	16.80		Yes				2013	
		Producer	MCDOWELL INVESTMENTS LP														
	1B	CRP		N	2			IN	A	0.20		Yes				2013	
		Producer	MCDOWELL INVESTMENTS LP														
	3	MIXFG	IGS	N	FG			I	A	35.56		Yes		6-10-2011			
		Producer	KEVIN HELDENBRAND														
	6	SOYBN	COM	N	GR			I	A	19.06		Yes		5-10-2011			
		Producer	KEVIN HELDENBRAND														
									Share	100.00		RMA Unit					
Ct/Co	Var/Type	Irr Prc	Int Use	Non-Irrig	Irrigated	Ct/Co	Var/Type	Irr Prc	Int Use	Non-Irrig	Irrigated	Ct/Co	Var/Type	Irr Prc	Int Use	Non-Irrig	Irrigated
CRP		N	2	17.00		MIXFG	IGS	N	FG	35.56		SOYBN	COM	N	GR	19.06	
Photo Number/Legal Description: G5 S11,14-T60-R28																	
Cropland: 71.70										Reported on Cropland: 71.62			Difference: -0.08			Reported on Non-Cropland: 0	

## CRP Contract

This form is available electronically.

**CRP-1** (02-04-03) U.S. DEPARTMENT OF AGRICULTURE  
Commodity Credit Corporation

### CONSERVATION RESERVE PROGRAM CONTRACT

NOTE: The authority for collecting the following information is Pub. L. 107-171. This authority allows for the collection of information without prior OMB approval mandated by the Paperwork Reduction Act of 1995. The time required to complete this information collection is estimated to average 4 minutes per response, including the time for reviewing instructions, searching existing data sources, gathering and maintaining the data needed, and completing and reviewing the collection of information.

7. COUNTY OFFICE ADDRESS (Include Zip Code):  
DAVIESS COUNTY FSA OFFICE  
209 ASH STREET  
GALLATIN, MO 64640

TELEPHONE NUMBER (Include Area Code): (660) 663-3703

1. ST. & CO. CO. LOCATION  
29061

2. SIGN-UP NUMBER  
26

3. CONTRACT NUMBER  
1965A

4. ACRES FOR ENROLLMENT  
17.0

5. FARM NUMBER  
4157

6. TRACT NUMBER(S)  
5140

8. OFFER (Select one)  
GENERAL ☒ ENVIRONMENTAL PRIORITY ☐

9. CONTRACT PERIOD  
FROM (MM-DD-YYYY) 10-01-2003 TO (MM-DD-YYYY) 09-30-2013

THIS CONTRACT is entered into between the Commodity Credit Corporation (referred to as "CCC") and the undersigned owners, operators, or tenants (who may be referred to as "Owner", "Operator", and "Tenant", respectively) on the farm identified above. The undersigned person or persons may hereafter collectively be referred to as "the Participant". The Participant agrees to place the designated acreage into the Conservation Reserve Program ("CRP") or other use set by CCC for the stipulated contract period from the date the Contract is executed by the CCC. The Participant also agrees to implement on such designated acreage the Conservation Plan developed for such acreage and approved by the CCC and the Participant. Additionally, the Participant and CCC agree to comply with the terms and conditions contained in this Contract, including the Appendix to this Contract, entitled Appendix to CRP-1, Conservation Reserve Program Contract (referred to as "Appendix"). By signing below, the Participant acknowledges that a copy of the Appendix for the applicable sign-up period has been provided to such person. Such person also agrees to pay such liquidated damages in an amount specified in the Appendix if the Participant withdraws prior to CCC acceptance or rejection. The terms and conditions of this contract are contained in this Form CRP-1 and in the CRP-1 Appendix and any addendum thereto. BY SIGNING THIS CONTRACT PRODUCERS ACKNOWLEDGE RECEIPT OF THE FOLLOWING FORMS: CRP-1; CRP-1 Appendix and any addendum thereto; CRP-2 or CRP-3C, if applicable; and, if applicable, CRP-15.

10A. Rental Rate Per Acre \$ 65.48

B. Annual Contract Payment \$ 1,113

C. First Year Payment \$

(Item 10C applicable only to continuous signup when the first year payment is prorated.)

11. Identification of CRP Land (See Page 2 for additional space)

A. Tract No.	B. Field No.	C. Practice No.	D. Acres	E. Total Estimated Cost-Share
5140	1	CP-2	16.8	
5140	1	CP-12	0.2	

12. OWNERS, OPERATORS, AND TENANTS

A(1). OPERATOR NAME AND ADDRESS (Include Zip Code): (2) SHARE % (3) SOCIAL SECURITY NUMBER: (4) SIGNATURE DATE (MM-DD-YYYY)

B(1). OWNER NAME AND ADDRESS (Include Zip Code): (2) SHARE 100% (3) SOCIAL SECURITY NUMBER: 431-90-7265 (4) SIGNATURE DATE (MM-DD-YYYY) 12/6/03

C(1). NAME AND ADDRESS (Include Zip Code): (2) SHARE % (3) SOCIAL SECURITY NUMBER: (4) SIGNATURE DATE (MM-DD-YYYY)

13. CCC USE ONLY - Payments according to the shares are approved. A. SIGNATURE OF CCC REPRESENTATIVE B. DATE (MM-DD-YYYY) 12-6-03

NOTE: The following statement is made in accordance with the Privacy Act of 1974 (5 USC 552a) and the Paperwork Reduction Act of 1995, as amended. The authority for requesting the following information is the Food Security Act of 1985 (Pub. L. 99-198), as amended and the Farm Security and Rural Investment Act of 2002 (Pub. L. 107-171) and regulations promulgated at 7 CFR Part 1410 and the Internal Revenue Code (26 USC 6109). The information requested is necessary for CCC to consider and process the offer to enter into a Conservation Reserve Program Contract, to assist in determining eligibility, and to determine the correct parties to the contract. Furnishing the requested information is voluntary. Failure to furnish the requested information will result in determination of ineligibility for certain program benefits and other financial assistance administered by USDA agency. This information may be provided to other agencies, IRS, Department of Justice, or other State and Federal Law enforcement agencies, and in response to a court magistrate or administrative tribunal. The provisions of criminal and civil fraud statutes, including 18 USC 238, 287, 371, 641, 651, 1001; 16 USC 714n; and 31 USC 3729, may be applicable to the information provided. RETURN THIS COMPLETED FORM TO YOUR COUNTY FSA OFFICE.

### Setting the trend for how Real Estate is Sold in the Midwest.

This information is thought to be accurate; however it is subject to verification and no liability for errors and omissions is assumed. Barnes Realty has made every effort to present accurate information on the property presented. Most of the information comes from outside sources: County/Government/Seller and human error can occur. It's the Buyer's responsibility to satisfy himself with the information presented and to determine the information to be true and accurate and the property to be suited for his intended use. The listing may be withdrawn with or without approval. The seller further reserves the right to reject any and all offers. All inquiries, inspections, appointments, and offers must be sent through: Rick Barnes, BARNES REALTY COMPANY 18156 Hwy 59, MOUND CITY, MO 64470  
PHONE NUMBER: 1-660-442-3177